

# I2S/TDM Input, High Efficiency, 10.25V BOOST Digital Smart K Audio Amplifier with SKTune Algorithm

## FEATURES

- **Integrates SKTune Algorithm**
  - Parametric audio path equalizer
  - Multi-band Dynamic range control
  - Anti-clip voltage limiter
  - Speaker Protection
- **Speaker Current and Voltage Sense**
- **Smart BOOST with total efficiency up to 84%**
- **High RF noise suppression, eliminate the TDD noise completely**
- **Low noise: 14uV**
- **THD+N: 0.01%**
- Supports 6Ω Speaker
- Extensive Pop-Click Suppression
- Volume control (from -95.875dB to 0dB)
- I<sup>2</sup>S/TDM interface:
  - I<sup>2</sup>S, Left-Justified and Right-Justified
  - Supports 1/2/4/6/8 slots TDM
  - Input Sample Rates from 8kHz to 96kHz
  - Data Width: 16, 20, 24, 32 Bits
- I<sup>2</sup>C-bus control interface(400kHz)
- Power Supplies:
  - VDD: 3.0V~5.5V
  - DVDD: 1.65V~1.95V
- Short-Circuit Protection, Over-Temperature Protection, Under-Voltage Protection and Over-Voltage Protection
- WLCSP 2.60mmX3.13mmX0.543mm-42B package

## APPLICATIONS

- Mobile phones
- Tablets
- Portable Audio Devices

## DESCRIPTION

The AW88394 is an I<sup>2</sup>S/TDM input, high efficiency digital Smart K audio amplifier with an integrated 10.25V smart boost converter and SKTune speaker protection algorithms. Due to its 14uV noise floor and ultra-low distortion, clean listening is guaranteed. It can deliver 5.3W output power into an 8Ω speaker at 1% THD+N.

The AW88394 integrates SKTune algorithm that includes parametric audio path equalizer, multi-band dynamic range control, anti-clip voltage limiter and speaker protection. The SKTune algorithm maximizes speaker performance while maintaining safe speaker conditions.

The AW88394 integrates a high-efficiency smart boost converter as the Class-D amplifier supply rail. The output voltage of boost converter can be adjusted smartly according to the amplitude of input signal, which extremely improves the efficiency without clipping distortion.

The AW88394 features high RF suppression and eliminates TDD noise completely benefited from the digital audio input interface. General settings are communicated via an I<sup>2</sup>C-bus interface, and the device address is configurable.

The AW88394 offers Short Circuit Protection, Over-Temperature Protection, Under-Voltage Protection and Over-Voltage Protection to protect the device.

AW88394 is available in a WLCSP 2.60mmX3.13mmX0.543mm-42B package.

## PIN CONFIGURATION AND TOP MARK

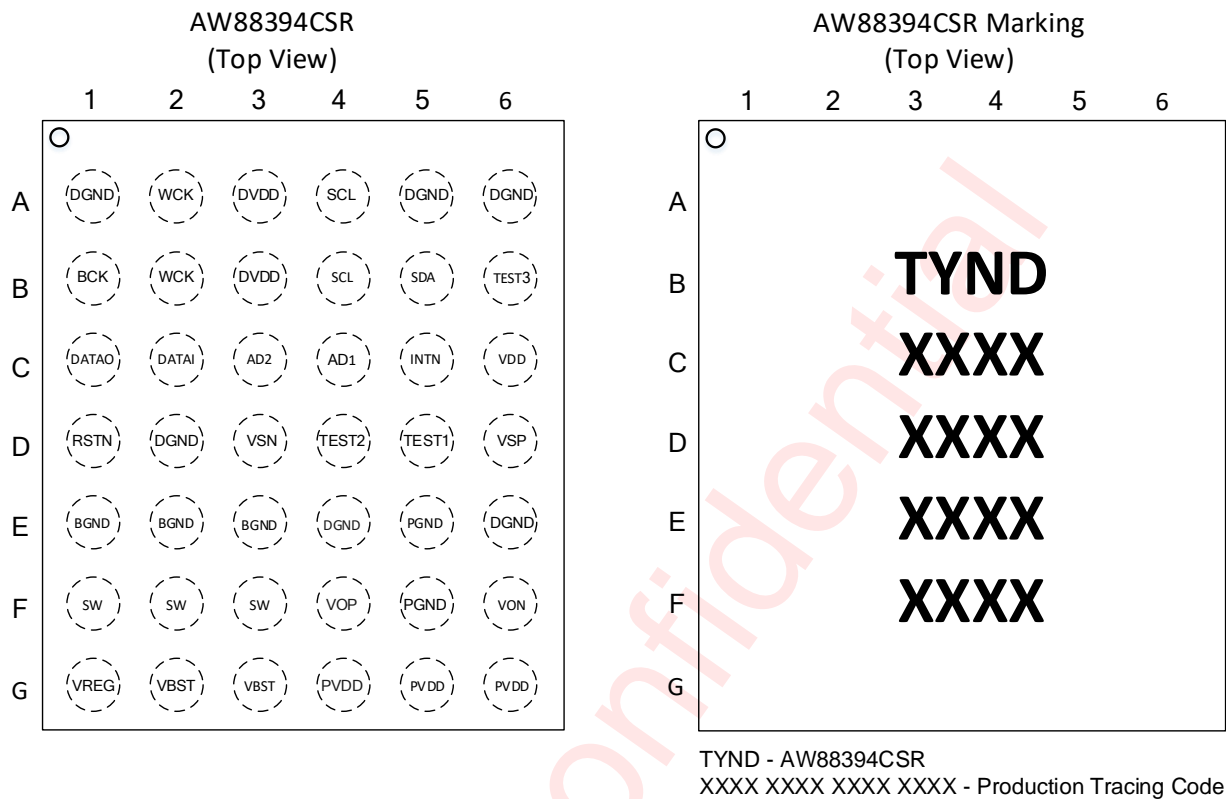


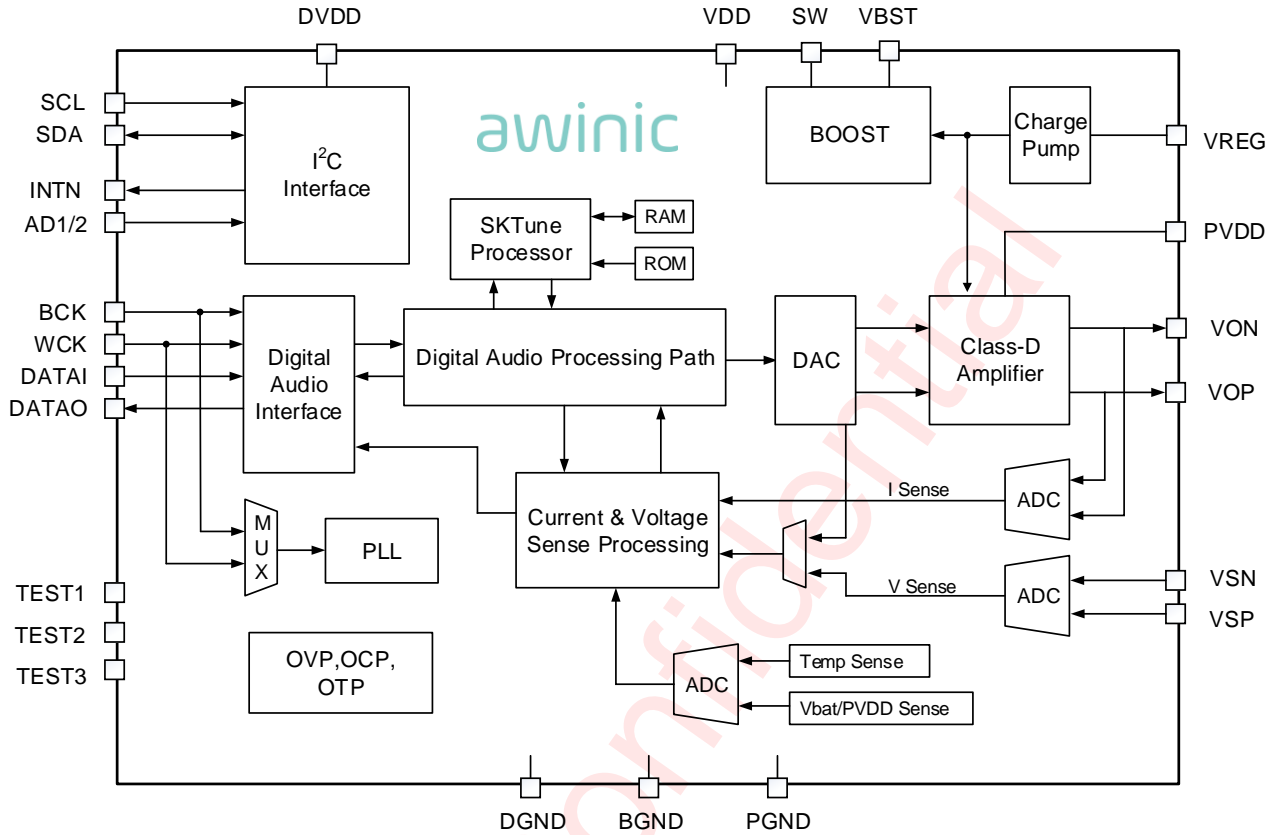
Figure 1 AW88394CSR pin diagram top view and device marking

## PIN DESCRIPTION

Pin No	Pin Name	Description
A1,A5,A6,D2, E4,E6	DGND	Digital GND
A2,B2	WCK	I <sup>2</sup> S word select input / TDM frame sync signal
A3,B3	DVDD	Digital power supply
A4,B4	SCL	I <sup>2</sup> C clock input
B1	BCK	I <sup>2</sup> S/TDM bit clock input
B5	SDA	I <sup>2</sup> C data I/O
B6	TEST3	Test signal input 3, connected to ground
C1	DATAO	I <sup>2</sup> S/TDM data out
C2	DATAI	I <sup>2</sup> S/TDM data input
C3	AD2	I <sup>2</sup> C address select input
C4	AD1	I <sup>2</sup> C address select input

Pin No	Pin Name	Description
C5	INTN	Interrupt output
C6	VDD	Battery power supply
D1	RSTN	Active low hardware reset
D3	VSN	Voltage sense inverting
D4	TEST2	Test signal input 2, connected to ground
D5	TEST1	Test signal input 1, connected to ground
D6	VSP	Voltage sense non-inverting
E1,E2,E3	BGND	Boost GND
E5,F5	PGND	Power GND
F1,F2,F3	SW	Boost switch pin
F4	VOP	Non-inverting Class-D output
F6	VON	Inverting Class-D output
G1	VREG	Voltage output of regulator
G2,G3	VBST	Boost output
G4,G5,G6	PVDD	Class-D power supply

**FUNCTIONAL BLOCK DIAGRAM**



**Figure 2 FUNCTIONAL BLOCK DIAGRAM**

APPLICATION DIAGRAM

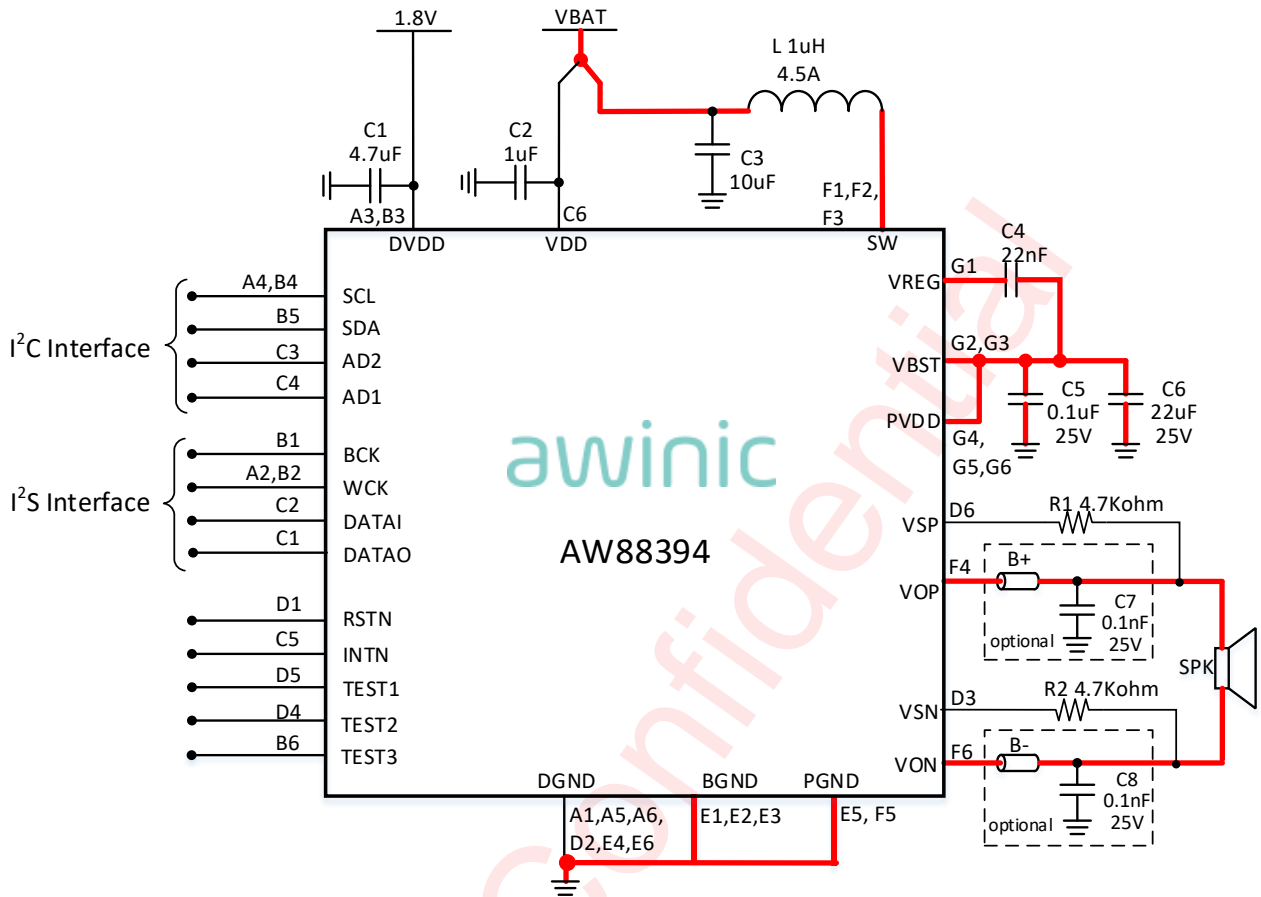


Figure 3 AW88394 Application Circuit

Note: Traces carry high current are marked in red in the above figure

All trademarks are the property of their respective owners.

**ORDERING INFORMATION**

Product Type	Temperature	Package	Device Marking	Moisture Sensitivity Level	Environmental Information	Delivery Form
AW88394CSR	-40°C ~ 85°C	WLCSP 2.60mmX3.13mm X0.543mm-42B	TYND	MSL1	RoHS+HF	6000 units/ Tape and Reel

awinic Confidential

**ABSOLUTE MAXIMUM RATING (NOTE1)**

Parameter	Range
Battery Supply Voltage $V_{DD}$	-0.3V to 6V
Digital Supply Voltage $V_{DVDD}$	-0.3V to 2V
Boost output voltage $V_{PVDD}$	-0.3 to 12V
Boost SW pin voltage	-0.3 to 12V (Note 2)
VOP/VON pin voltage	-0.3 to 12V (Note 2)
VREG pin voltage	-0.3 to $V_{PVDD}+6V$
Minimum load resistance $R_L$	5Ω
Package Thermal Resistance $\theta_{JA}$	48°C/W
Ambient Temperature Range	-40°C to 85°C
Maximum Junction Temperature $T_{JMAX}$	165°C
Storage Temperature Range $T_{STG}$	-65°C to 150°C
Lead Temperature (Soldering 10 Seconds)	260°C
ESD Rating (Note 3,4)	
HBM (Human Body Model)	±2000V
CDM (Charge Device Model)	±1500V
Latch-up	
Test Condition: JESD78E	+IT: 200mA -IT: -200mA

**Note 1:** Stresses beyond those listed under "absolute maximum ratings" may cause permanent damage to the device. These are stress ratings only and functional operation of the device at these or any other conditions beyond those indicated under "recommended operating conditions" is not implied. Exposure to absolute-maximum-rated conditions for extended periods may affect device reliability.

**Note 2:** SW/VOP/VON pin can handle 16V transients for less than 5ns

**Note 3:** The human body model is a 100pF capacitor discharged through a 1.5kΩ resistor into each pin. Test method: ESDA/JEDEC JS-001-2017

**Note 4:** Test method: ESDA/JEDEC JS-002-2018

## ELECTRICAL CHARACTERISTICS

## CHARACTERISTICS

Test condition:  $T_A=25^{\circ}\text{C}$ ,  $V_{DD}=3.6\text{V}$ ,  $DV_{DD}=1.8\text{V}$ ,  $PV_{DD}=10.25\text{V}$ ,  $R_L=8\Omega+33\mu\text{H}$ ,  $f=1\text{kHz}$ (unless otherwise noted)

Symbol	Description	Test Conditions	Min	Typ.	Max	Units
$V_{DD}$	Battery supply voltage	On pin VDD	3.0		5.5	V
$DV_{DD}$	Digital supply voltage	On pin DVDD	1.65	1.8	1.95	V
$I_{VDD}$	Battery supply current	Operating mode		6		mA
		Standby mode		2.5		$\mu\text{A}$
		Power down mode		0.5	2	$\mu\text{A}$
$I_{DVDD}$	Digital supply current	Operating mode, SKTune Algorithm activated		18		mA
		Operating mode, SKTune Algorithm bypassed		5.5		mA
		Standby mode		9		$\mu\text{A}$
		Power down mode		8		$\mu\text{A}$
<b>Boost</b>						
$V_{PVDD}$	Boost output voltage			10.25 <sup>(Note1)</sup>		V
$V_{OVP}$	Over-voltage threshold			$V_{PVDD}+0.75$		V
	OVP hysteresis voltage			400		mV
$I_{L\_PEAK}$	Inductor peak current limit			4.0 <sup>(Note1)</sup>		A
$F_{BST}$	Operating Frequency	$f_s = 48\text{KHz}$		1.6		MHz
<b>Class-D</b>						
$R_{dson}$	Drain-Source on-state resistance	High side MOS + Low side MOS		350		m $\Omega$
$P_o$	Speaker Output Power	THD+N=1%, $R_L=8\Omega+33\mu\text{H}$ , $V_{DD}=4.2\text{V}$ , $PV_{DD}=10.25\text{V}$		5.3		W
		THD+N=10%, $R_L=8\Omega+33\mu\text{H}$ , $V_{DD}=4.2\text{V}$ , $PV_{DD}=10.25\text{V}$		6.3		W
		THD+N=1%, $R_L=6\Omega+33\mu\text{H}$ , $V_{DD}=4.2\text{V}$ , $PV_{DD}=10.25\text{V}$		5.4		W
		THD+N=10%, $R_L=6\Omega+33\mu\text{H}$ , $V_{DD}=4.2\text{V}$ , $PV_{DD}=10.25\text{V}$		6.5		W
$V_{OS}$	Output offset voltage	I <sup>2</sup> S signal input 0	-10	0	10	mV



Symbol	Description	Test Conditions	Min	Typ.	Max	Units
$\eta$	Total efficiency (Class-D)	$V_{DD}=4.2V$ , $P_o=0.45W$ , $R_L=8\Omega+33\mu H$		87		%
	Total efficiency (Boost+Class-D)	$V_{DD}=4.2V$ , $P_o=2W$ , $R_L=8\Omega+33\mu H$		84		%
THD+N	Total harmonic distortion plus noise	$V_{DD}=4.2V$ , $P_o=1W$ , $R_L=8\Omega+33\mu H$ , $f=1kHz$ , $PVDD=10.25V$		0.01		%
$E_N$	Speaker Mode Output noise	A-weighting		18		$\mu V$
	Receiver Mode Output noise	A-weighting		14		$\mu V$
SNR	Signal-to-noise ratio	$V_{DD}=4.2V$ , $PVDD=10.25V$ , $P_o=5.3W$ , $R_L=8\Omega+33\mu H$ , A-weighting		110		dB
DNR	Dynamic Range	-60dBFS Method, A-weighting		109		dB
PSRR	Power supply rejection ratio	Receiver Mode $V_{DD}=4.2V$ , $V_{p-p\_sin}=200mV$	217Hz		85	dB
			1kHz		85	dB
<b>Current Sense</b>						
$I_{SNS\_FS}$	Current sense full scale			3.667		A
SNR	Signal-to-noise ratio	$P_o=1W$ , $R_L=8\Omega+33\mu H$ , A-weighting		65		dB
THD+N	Total harmonic distortion plus noise	$P_o=1W$ , $R_L=8\Omega+33\mu H$		0.4		%
$\Delta I_{SNS}$	Current sense accuracy	$P_o=1W$ , $R_L=8\Omega+33\mu H$		2		%
<b>Voltage Sense</b>						
$V_{SNS\_FS}$	Voltage sense full scale			16.5		V
SNR	Signal-to-noise ratio	$P_o=1W$ , $R_L=8\Omega+33\mu H$ , A-weighting		65		dB
THD+N	Total harmonic distortion plus noise	$P_o=1W$ , $R_L=8\Omega+33\mu H$		0.1		%
$\Delta V_{SNS}$	Voltage sense accuracy	$P_o=1W$ , $R_L=8\Omega+33\mu H$		2		%
<b>Digital Logical Interface</b>						
$V_{IL}$	Logic input low level	BCK, WCK, DATA1 Pin			$0.3 \times V_{DVDD}$	V
$V_{IH}$	Logic input high level		$0.7 \times V_{DVDD}$		$V_{DVDD}$	V

Symbol	Description	Test Conditions	Min	Typ.	Max	Units
V <sub>IL</sub>	Logic input low level	RSTN, SCL, SDA, AD1, AD2 Pin			0.3 x V <sub>DVDD</sub>	V
V <sub>IH</sub>	Logic input high level		0.7 x V <sub>DVDD</sub>		3.6	V
V <sub>OL</sub>	Logic output low level	I <sub>OUT</sub> =2mA			0.45	V
V <sub>OH</sub>	Logic output high level	I <sub>OUT</sub> =-2mA	V <sub>DVDD</sub> - 0.45		V <sub>DVDD</sub>	V
<b>Protection</b>						
T <sub>SD</sub>	Over temperature protection threshold			150		°C
T <sub>SDR</sub>	Over temperature protection recovery threshold			130		°C
UVP	Under-voltage protection voltage			2.4		V
	Under-voltage protection hysteresis voltage			200		mV

**Note 1:** Registers are adjustable; Refer to the list of registers.

I<sup>2</sup>C INTERFACE TIMING

Parameter			MIN	TYP	MAX	UNIT
No.	Sym	Name				
1	f <sub>SCL</sub>	SCL Clock frequency			400	kHz
2	t <sub>LOW</sub>	SCL Low level Duration	1.3			μs
3	t <sub>HIGH</sub>	SCL High level Duration	0.6			μs
4	t <sub>RISE</sub>	SCL, SDA rise time			0.3	μs
5	t <sub>FALL</sub>	SCL, SDA fall time			0.3	μs
6	t <sub>SU:STA</sub>	Setup time SCL to START state	0.6			μs
7	t <sub>HD:STA</sub>	(Repeat-start) Start condition hold time	0.6			μs
8	t <sub>SU:STO</sub>	Stop condition setup time	0.6			μs
9	t <sub>BUF</sub>	the Bus idle time START state to STOP state	1.3			μs
10	t <sub>SU:DAT</sub>	SDA setup time	0.1			μs
11	t <sub>HD:DAT</sub>	SDA hold time	10			ns

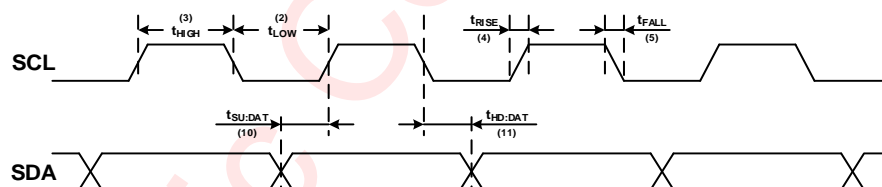


Figure 4 SCL and SDA timing relationships in the data transmission process

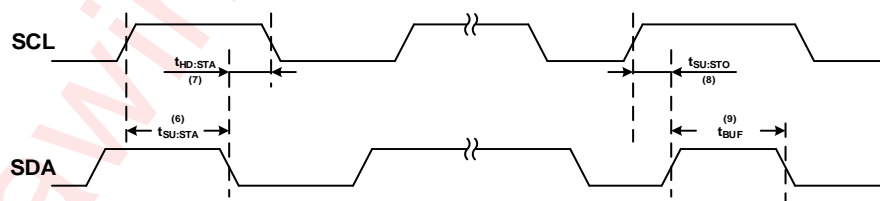


Figure 5 The timing relationship between START and STOP state

## DIGITAL AUDIO INTERFACE TIMING

Parameter Name		Min	Typ.	Max	Units
$f_s$	sampling frequency, on pin WCK	8		96	kHz
$f_{bck}$	Bit clock frequency, on pin BCK	$32 \cdot f_s$		$256 \cdot f_s$ (NOTE)	Hz
$t_{su}$	WCK, DATAI Setup time to BCK	10			ns
$t_h$	WCK, DATAI hold time to BCK	10			ns
$t_d$	DATAO output delay time to BCK			40	ns

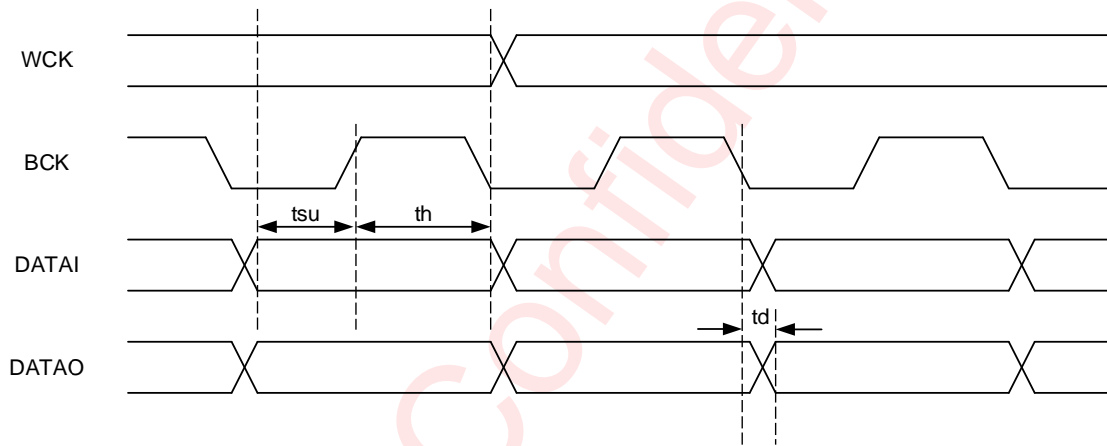
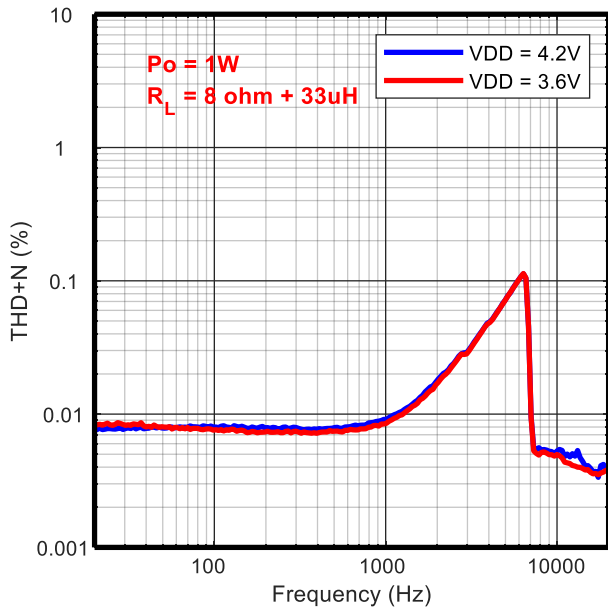


Figure 6 Digital Audio Interface Timing

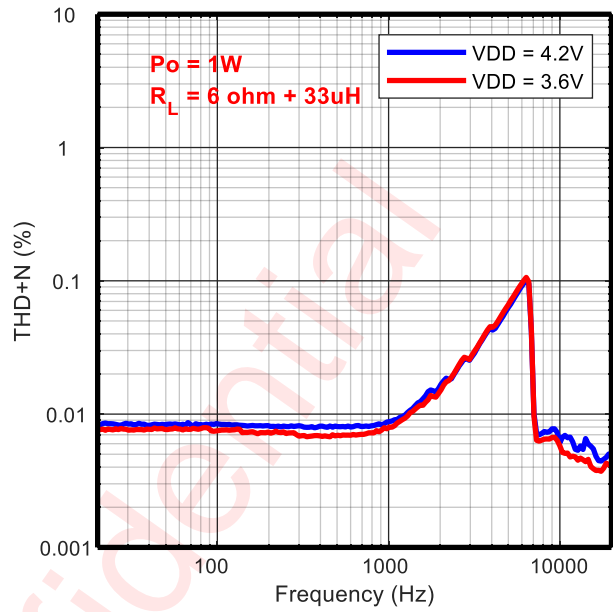
**NOTES:** The digital audio interface supports up to 8 slots (32-bit) at a 32/44.1/48 kHz sample rate, and 4 slots (32-bit) at a 96 kHz sample rate.

TYPICAL CHARACTERISTIC CURVES

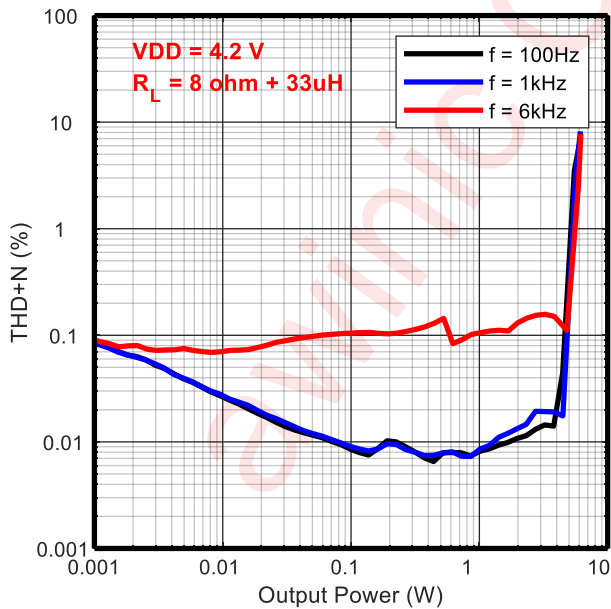
THD+N VS. FREQUENCY



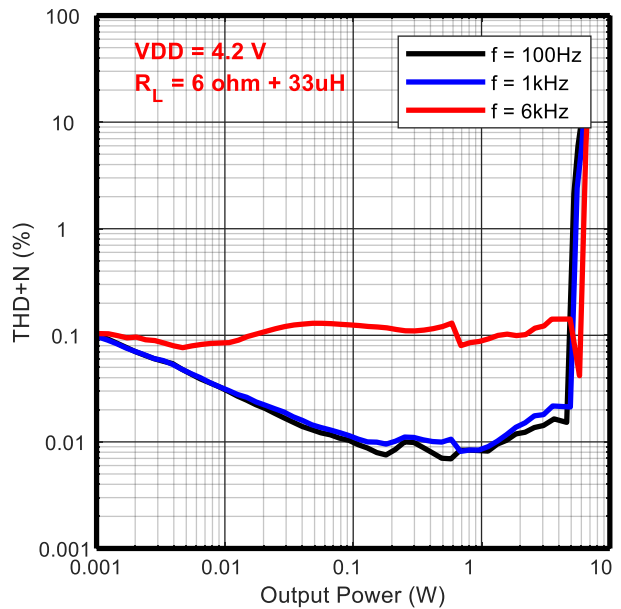
THD+N VS. FREQUENCY



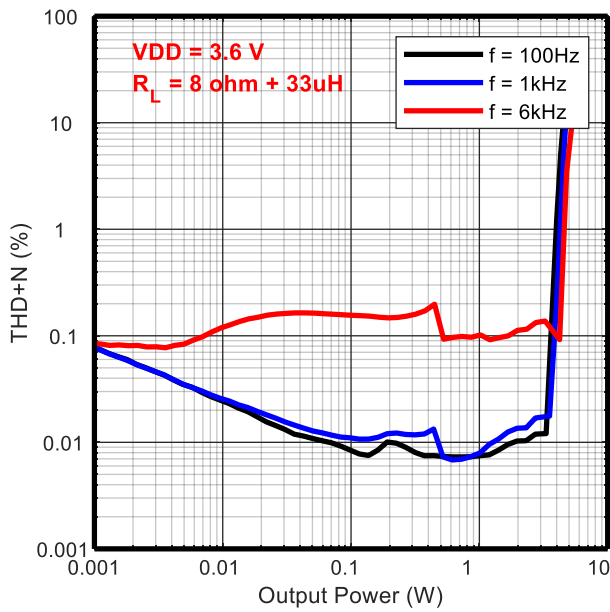
THD+N VS. OUTPUT POWER



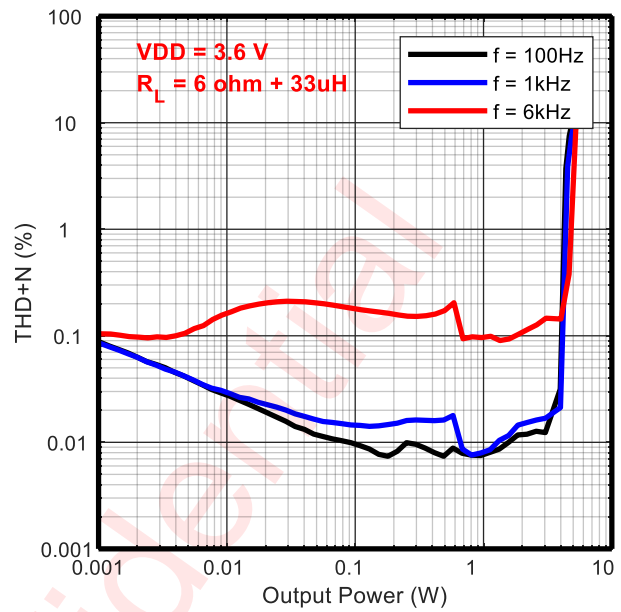
THD+N VS. OUTPUT POWER



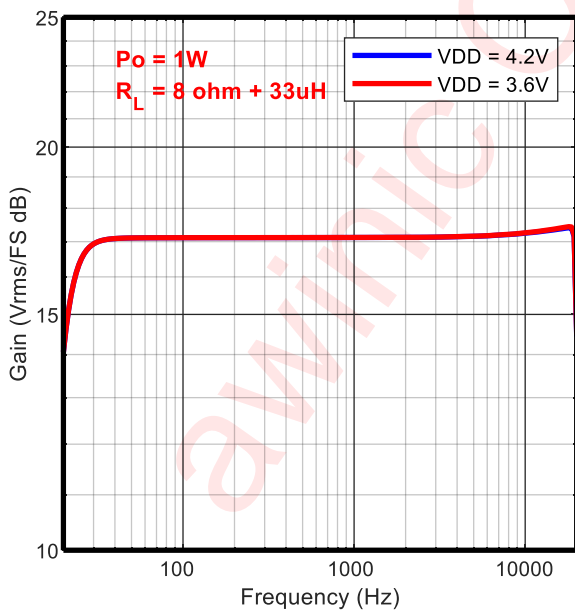
THD+N VS. OUTPUT POWER



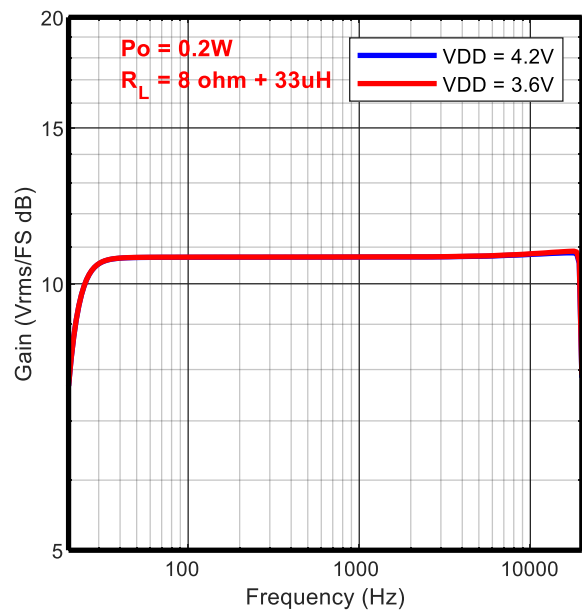
THD+N VS. OUTPUT POWER



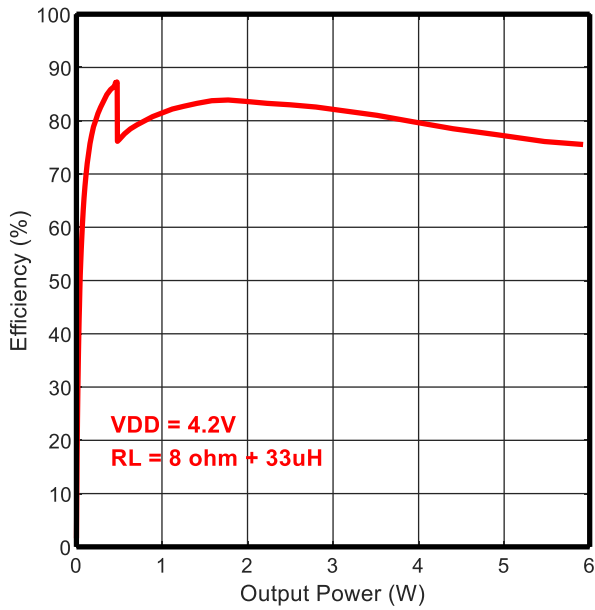
SPEAKER GAIN VS. FREQUENCY



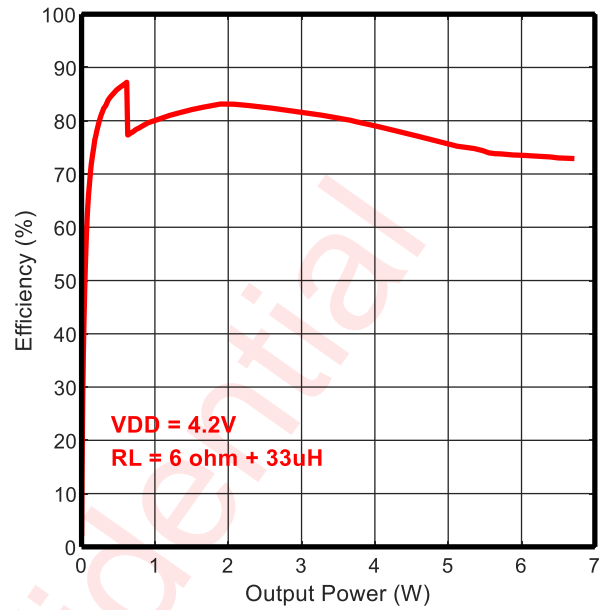
RECEIVER GAIN VS. FREQUENCY



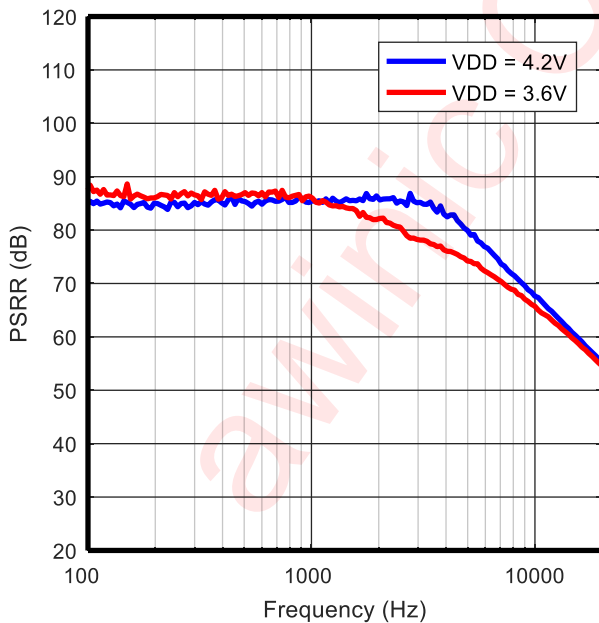
EFFICIENCY VS. OUTPUT POWER



EFFICIENCY VS. OUTPUT POWER



RECEIVER PSRR VS. FREQUENCY



## DETAIL FUNCTIONAL DESCRIPTION

### POWER ON RESET

The device provides a power-on reset feature that is controlled by VDD and DVDD supply voltage. When the VDD supply voltage raises from 0V to 2.1V, or DVDD supply voltage raises from 0V to 1.1V. The reset signal will be generated to perform a power-on reset operation, which will reset all circuits and configuration registers.

### OPERATION MODE

The device supports 4 operation modes.

Table 1 Operating Mode

Mode	Condition	Description
<b>Power-Down</b>	$V_{DD} < 2.1V$ $V_{DVDD} < 1.1V$	Power supply is not ready, chipset is power down.
<b>Stand-By</b>	$V_{DD} > 3.0V$ $V_{DVDD} > 1.65V$	Power supply is ready, most parts of the device are power down for low power consumption except I <sup>2</sup> C interface
<b>Configuring</b>	PWDN = 0	Device is biased while boost and class-D output is floating. System configuration carried out in this mode
<b>Operating</b>	AMPPD = 0	Amplifier is fully operating

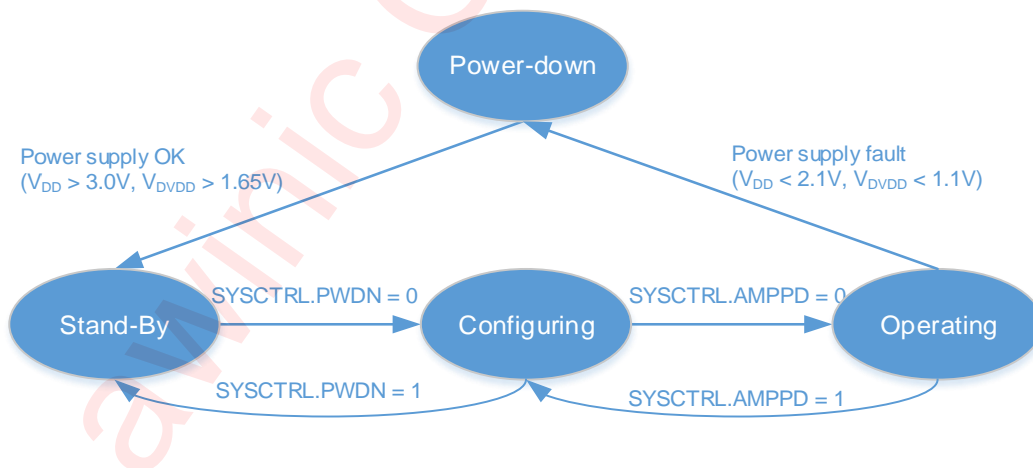


Figure 7 Device operating modes transition

### POWER-DOWN MODE

The device switches to power-down mode when any of the following events occurred:

- $V_{DVDD} < 1.1V$
- $V_{DD} < 2.1V$
- RSTN pin goes LOW



In this mode, all circuits inside this device will be shut down except the power-on-reset circuit. I<sup>2</sup>C interface isn't accessible in this mode, and all of the internal configurable registers are cleared.

The device will jump out of the power-down mode automatically when all of the supply voltages are OK ( $V_{DVDD} > 1.65\text{ V}$  and  $V_{DD} > 3.0\text{ V}$ ) and RSTN goes HIGH.

### STAND-BY MODE

The device switches stand-by mode when the power supply voltages are OK and RSTN pin is HIGH. In this mode I<sup>2</sup>C interface is accessible, other modules are still powered down. Customer can set device to stand-by mode when the device is no needed to work.

### CONFIG MODE

The device switches to OFF mode when:

- SYSCTRL.PWDN = 0;
- SYSCTRL.AMPPD = 1;

In this mode the internal bias, OSC and PLL modules will start to work.

### OPERATING MODE

The device is fully operational in this mode. Boost, amplifier loop and power stage circuits will start to work. Customer can set SYSCTRL.AMPPD = 0 to make device in this mode.

This device power up sequence is illustrated in the following figure:

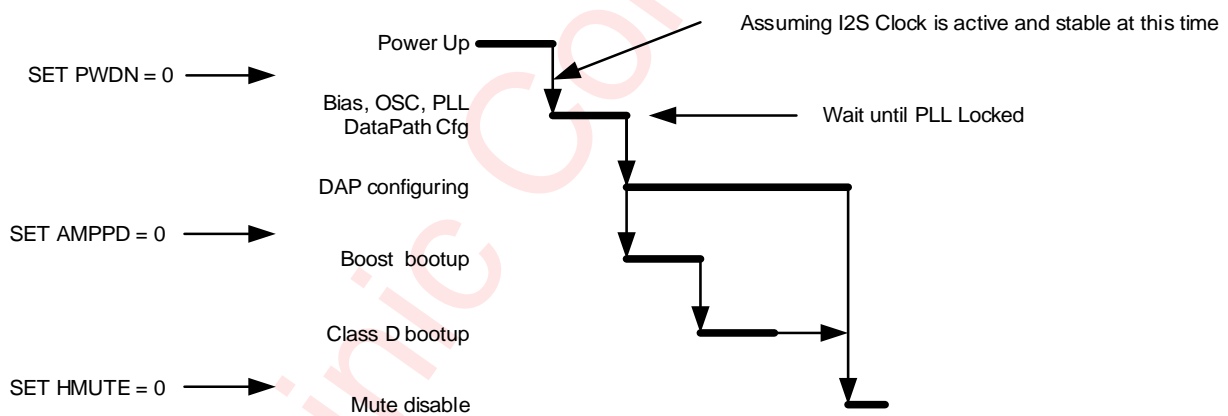


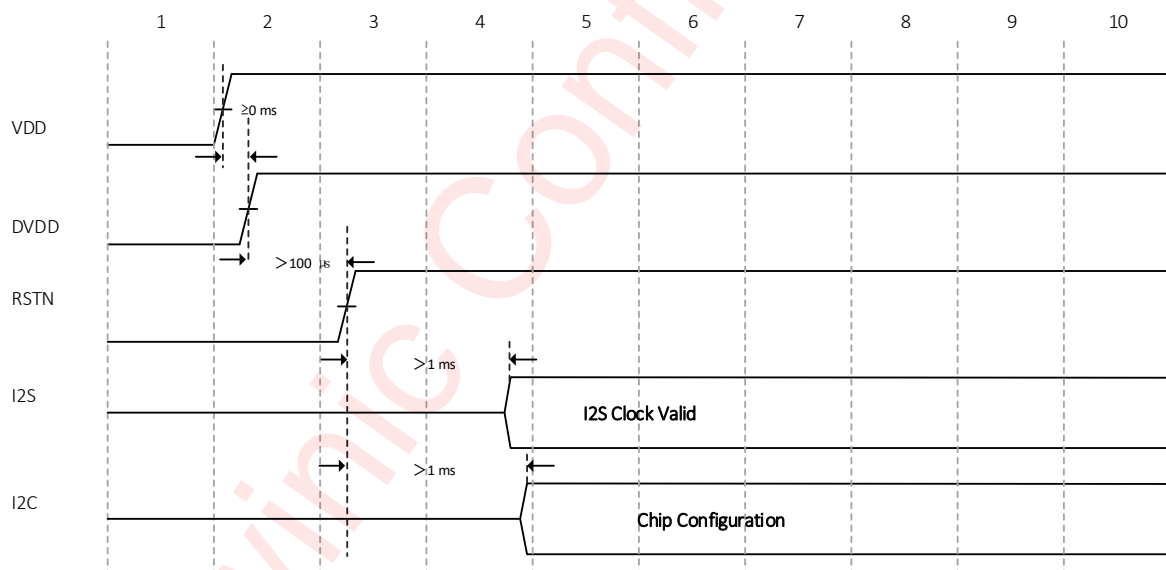
Figure 8 Power up sequence

Detail description for each step is listed in the following table.

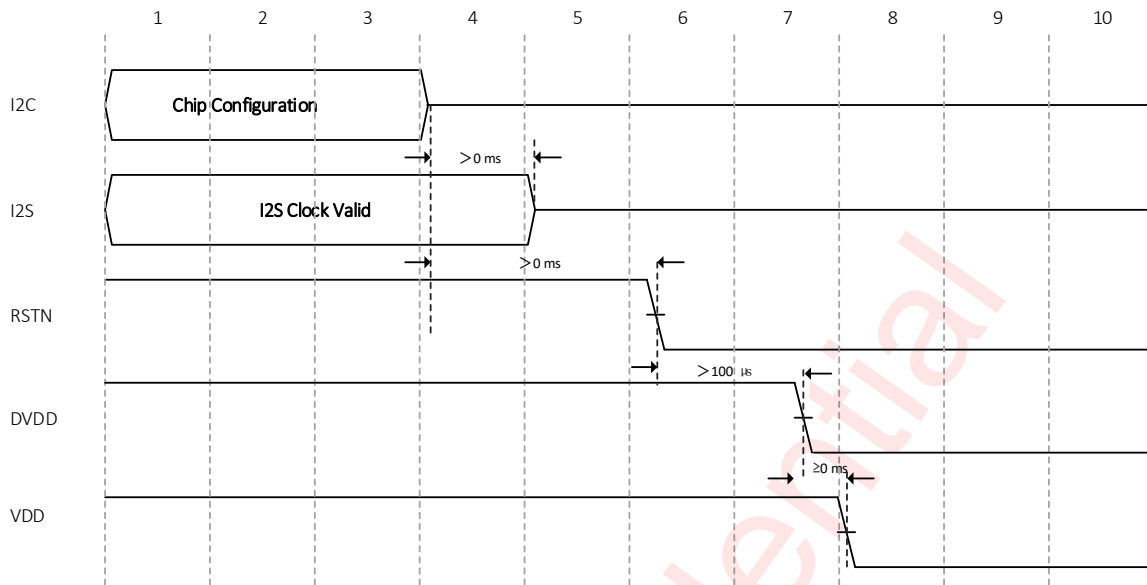
Table 2 Detail Description of Power up sequence

Index	Description	Mode
1	Wait for VDD、 DVDD supply power up	Power-Down
2	I <sup>2</sup> S + Data Path Configuration	Stand-By
3.1	Enable system (SYSCTRL.PWDN = 0)	Configuring
3.2	Bias, OSC, PLL active	
3.3	Waiting for PLL locked	
4.1	Enable Boost and amplifier (SYSCTRL.AMPPD =0) Boost and Amplifier boot up	Operating
4.2	Waiting for SYSST.SWS =1	
5	Release Hard-Mute Data Path active	

Power up sequence considering I2S, I2C timing shows as below:



Power down sequence considering I2S, I2C timing shows as below:



## SOFTWARE RESET

Writing 0x55AA to register ID (0x00) via I<sup>2</sup>C interface will reset the device internal circuits and all configuration registers are cleared.

## DIGITAL AUDIO INTERFACE

Audio data is transferred between the host processor and the device via the Digital Audio Interface. The digital audio interface is in full-duplex via 4 dedicated pins:

- BCK
- WCK
- DATAI
- DATAO

Two-slot I<sup>2</sup>S and 1/2/4/6/8-slot TDM are supported in this device. The digital audio interface supports up to 8 slots (32-bit) at a 32/44.1/48 kHz sample rate, and 4 slots (32-bit) at a 96 kHz sample rate. The digital audio interface on this device is slaver only and flexible with data width options, including 16, 20, 24, or 32 bits by configurable registers.

Three modes of I<sup>2</sup>S are supported, including standard I<sup>2</sup>S mode, left-justified mode and right-justified data mode, which can be configured via I2SCTRL.I2SMOD. These modes are all MSB-first, with data width programmable via I2SCTRL.I2SFS.

The word clock WCK is used to define the beginning of a frame. The frequency of this clock corresponds to the sampling frequency. The device supports the following sample rates (fs): 8 kHz, 11.025 kHz, 12 kHz, 16 kHz, 22.05 kHz, 24 kHz, 32 kHz, 44.1 kHz, 48 kHz and 96 kHz. It is selected via configurable register I2SCTRL.I2SSR.

The bit clock BCK is used to sample the digital audio data across the digital audio interface. The number of bit-clock pulses in a frame is defined as slot length. Three kind of slot length are supported (16/24/32) via

configurable register I2SCTRL.I2SBCK. The frequency of BCK can be calculated according to the following equation:

$$BCK \text{ frequency} = \text{SampleRate} * \text{SlotLength} * \text{SlotNumber}$$

**SampleRate:** Sample rate for this digital audio interface;

**SlotLength:** The length of one audio slot in unit of BCK clock;

**SlotNumber:** How many slots supported in this audio interface. For example: 2-slot supported in I2S mode, 1/2/4/6/8-slot supported in TDM mode.

The word select and bit clock signals of the I<sup>2</sup>S input are the reference signals for the digital audio interface, both WCK and BCK could be used as the reference clock of internal Phased Locked Loop (PLL).

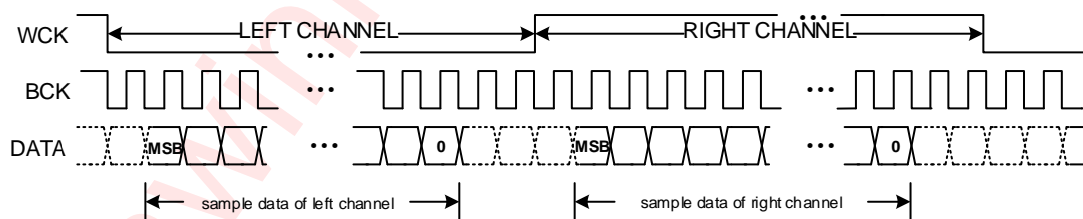
The input audio data can be attenuated -6dB in this module, by setting bit I2SCFG2.INPLEV. The audio source can be from left channel, right channel or the average of the left and right channel, which is controlled by I2SCTRL.CHSEL.

**Table 3 Supported I2S interface parameters**

Interface format(MSB first)	Data width	BCK frequency
Standard I <sup>2</sup> S	16b	32fs/48fs /64fs
	20b/24b/32b	48fs /64fs
Left-justified	16b	32fs/48fs /64fs
	20b/24b/32b	48fs /64fs
Right-justified	16b	32fs /48fs /64fs
	20b/24b/32b	48fs /64fs

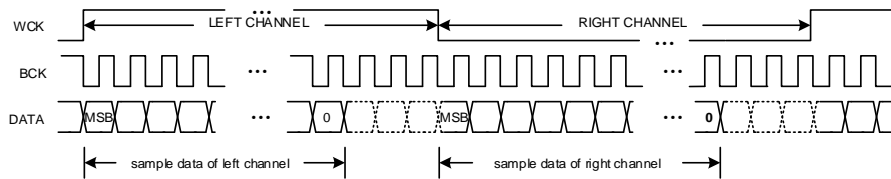
The output port DATA0, can be enabled or disabled via bit I2SCFG1.I2STXEN. The unused slots can be set to Hi-z or active, which is controlled by I2SCFG2.DOZH. When the unused slots are active, the data could be zeros or same data of used slot, which can be configured via I2SCFG2.I2SDOSEL.

### STANDARD I<sup>2</sup>S MODE

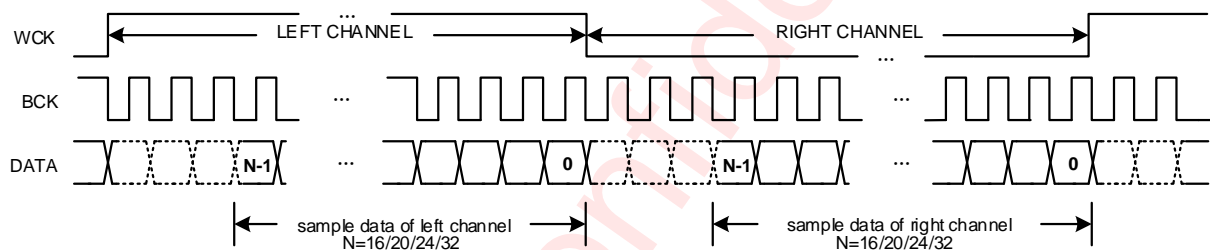


**Figure 9 I<sup>2</sup>S Timing for Standard I<sup>2</sup>S Mode**

- When WCK=0 indicating the left channel data, and WCK=1 indicating the right channel data.
- The MSB of the left channel is valid on the second rising edge of the bit clock after the falling edge of the word clock. Similarly the MSB of the right channel is valid on the second rising edge of the bit clock after the rising edge of the word clock.

**LEFT-JUSTIFIED MODE****Figure 10 I<sup>2</sup>S Timing for Left-Justified Mode**

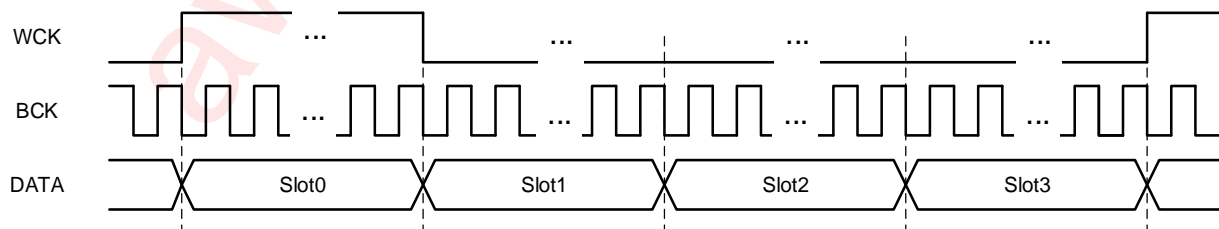
- When WCK=1 indicating the left channel data, and WCK=0 indicating the right channel data.
- The MSB of the left channel is valid on the first rising edge of the bit clock after the rising edge of the word clock. Similarly the MSB of the right channel is valid on the first rising edge of the bit clock after the falling edge of the word clock.

**RIGHT-JUSTIFIED MODE****Figure 11 I<sup>2</sup>S Timing for Right-Justified Mode**

- When WCK is high indicating the left channel data, and WCK=0 indicating the right channel data.
- The LSB (bit 0) of the left channel is valid on the rising edge of the bit clock preceding the falling edge of the word clock. Similarly, the LSB (bit 0) of the right channel is valid on the rising edge of the bit clock preceding the rising edge of the word clock.

**TDM MODE**

All of the three kinds of bit synchronization modes (standard, left-justified, right-justified) are also supported in TDM mode. The difference between TDM and I<sup>2</sup>S is the supported slot-number. 1/2/4/6/8-slot is supported in TDM mode, while 2-slot is supported in I<sup>2</sup>S mode

**Figure 12 TDM Timing**

Note: The high level pulse width of WCK signal can be one slot time or one period of BCK.

## DIGITAL AUDIO PROCESSING

This device incorporates one programmable Digital Audio Processor (DAP) block. It provides the algorithm for audio signal processing and speaker protection. The following functions are available in this module:

- HDCC
- Hardware AGC
- Volume control
- HMute

The signal processing flow in the DAP is illustrated in the following figure.

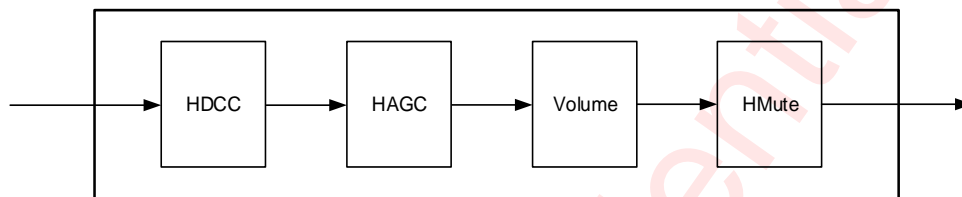


Figure 13 Block Diagram of DAP

### HDCC

This module performs hardware DC canceling for the input audio stream. It blocks DC components into analog class D loop.

### HAGC

System output power tends to be more than rated power of speaker in the actual audio application, such as the maximum undistorted power is about 5.3W in the 10.25V power supply for 8ohm speaker. However, many speakers' rated power is about 1W, the overload signal can cause damage to the speaker if there is no output power control. The audio power amplifier with HAGC can protect the speaker effectively. When the output power doesn't exceed the setting threshold, the HAGC module will not attenuate the internal gain. Once the output power exceeds the setting threshold, the HAGC module will reduce the internal gain of amplifier and restrict the output power under the setting threshold.

### VOLUME CONTROL

The volume controller attenuates the audio signal at the end of digital audio processing. The range of volume setting is from 0dB to -95.875dB with 0.125dB/step.

### MUTE

This module performs mute control for the audio stream.

## SKTUNE ALGORITHM

This device integrates SKTune algorithm that maximizes the speaker performance while maintaining safe speaker conditions. The following functions are available in this module.

- Parametric Audio Path Equalizer (EQ)
- Multi-Band Dynamic Range Compressor (MBDRC)
- Anti-clip Voltage Limiter
- Speaker Protection

The signal processing flow in the SKTune algorithm is illustrated in the following figure:

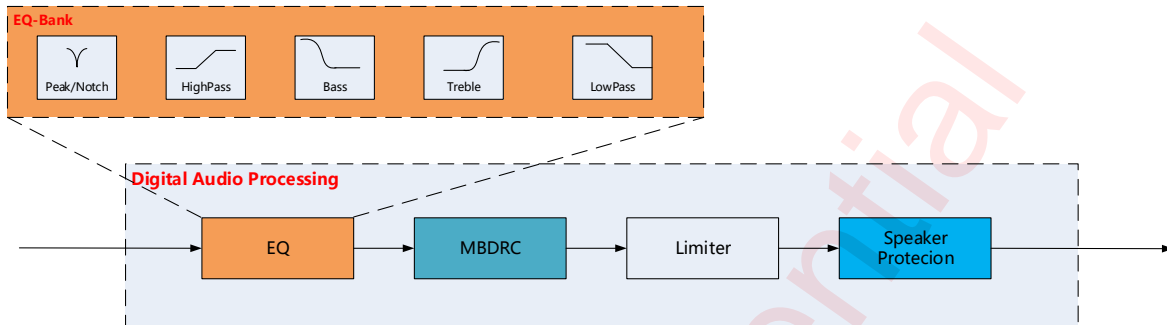


Figure 14 Block Diagram of SKTune algorithm

### PARAMETRIC AUDIO PATH EQUALIZER

Ten Parametric Audio Path Equalizers (EQ) are available and each of the equalizer can be fully programmable. It's possible to be implemented as any type of filter (high-pass, low-pass, peak, notch, bass, treble etc.) with different design methodologies to achieve the required frequency response.

### MULTI-BAND DYNAMIC RANGE CONTROL

A highly configurable and scalable MBDRC is available to improve audio performance. A block diagram of the MBDRC is illustrated in the following figure:

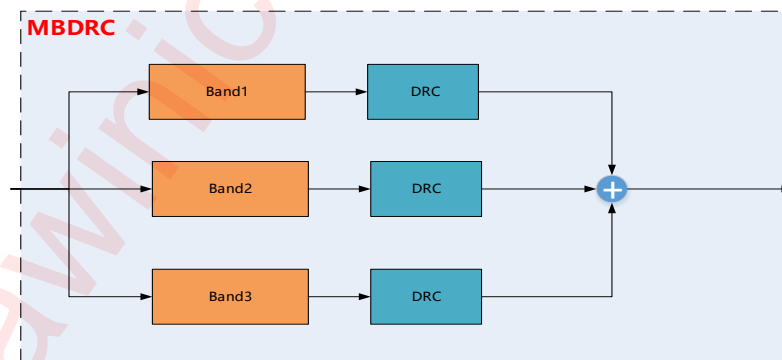


Figure 15 Simplified MBDRC block diagram

Three sub-band DRCs are supported. The audio input can be processed with individually configurable band-limited DRCs.

### ANTI-CLIP VOLTAGE LIMITER

The anti-clip voltage limiter is used to protect the output signal from exceeding the amplifier clip level. When

signal is over the amplifier clip level it will be attenuated automatically and limited below the threshold without clipping.

### ***SPEAKER PROTECTION***

This device has integrated three protection schemes for the speaker.

- **Membrane excursion control:** avoiding speaker membrane over-excursion
- **Programmable Power Control:** avoiding speaker voice coil over-power
- **Coil temperature control:** avoiding speaker voice coil over-temperature

#### **Membrane excursion control**

The speaker membrane excursion is proportional to the amplitude of input signal. This device controls the membrane excursion by control the signal amplitude. It predicted the speaker membrane excursion according to the input signal at first. Then it'll attenuate the amplitude of the input signal automatically once the predicted excursion over the threshold.

#### **Programmable Power Control**

The power controller limits the maximum output power in amplifier mode when necessary. The power of output signal will be attenuated and limited below the programmable threshold in given attack time when the amplitude of input signal is above the threshold. While the attenuation will be released in given release time when the amplitude of input signal is below the threshold

#### **Coil temperature control**

Speaker voice coil temperature is proportional to its impedance in general. This device continuously monitors the impedance of speaker voice coil with integrated ADCs, and the coil temperature could be calculated according to its impedance. When the coil temperature is near the threshold, it controls the amplitude of signal sending to speaker.

### **DC-DC CONVERTER**

This device using smart boost converter generates the amplifier supply rail. The DC-DC converter can work in different mode via BSTCTRL2.BST\_MODE:

- **Pass-through mode:** the voltage of VDD is transparently passed to output of converter PVDD
- **Force boost mode:** the output voltage is boosted up to the programmed output voltage
- **Smart boost 1 mode:** the output voltage can be switch between VDD and programmed output voltage according to the amplifier output's signal swing requirements.
- **Smart boost 2 mode:** the output voltage can be dynamically adjusted according to the amplifier output's signal swing requirements in order to maximize efficiency.

#### ***PASS-THROUGH MODE***

The internal boost circuit is not working; the voltage of VDD is passed to PVDD directly.

#### ***FORCE BOOST MODE***

The boost circuit is always working and converts the voltage of VDD to the programmed output voltage. The



output voltage is configured via BSTCTRL2.BST\_VOUT\_SET

### SMART BOOST 1 MODE

Smart boost 1 mode can dynamically turn on or off the boost according to the amplifier output's signal swing requirements in order to maximize efficiency.

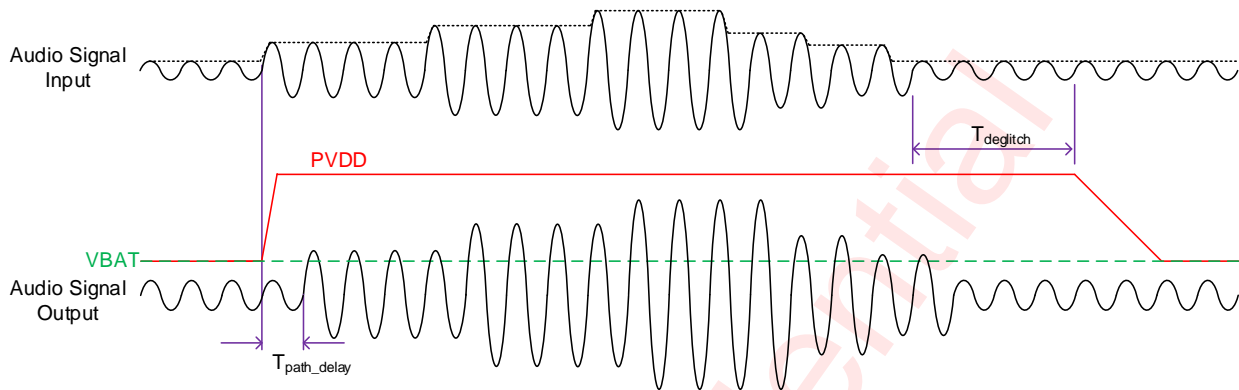


Figure 16 Boost Circuit Behavior in Smart Boost 1 Mode

### SMART BOOST 2 MODE

The boost circuit works dynamically according to the output audio level. When the level of output audio signal is below the setting threshold, the boost circuit will not be activated. Till the level of output audio signal is above the threshold, the boost circuit starts to work before the audio stream arriving at amplifier power stage. The output voltage PVDD is dynamically adjusted to meet the requirement of output audio signal.

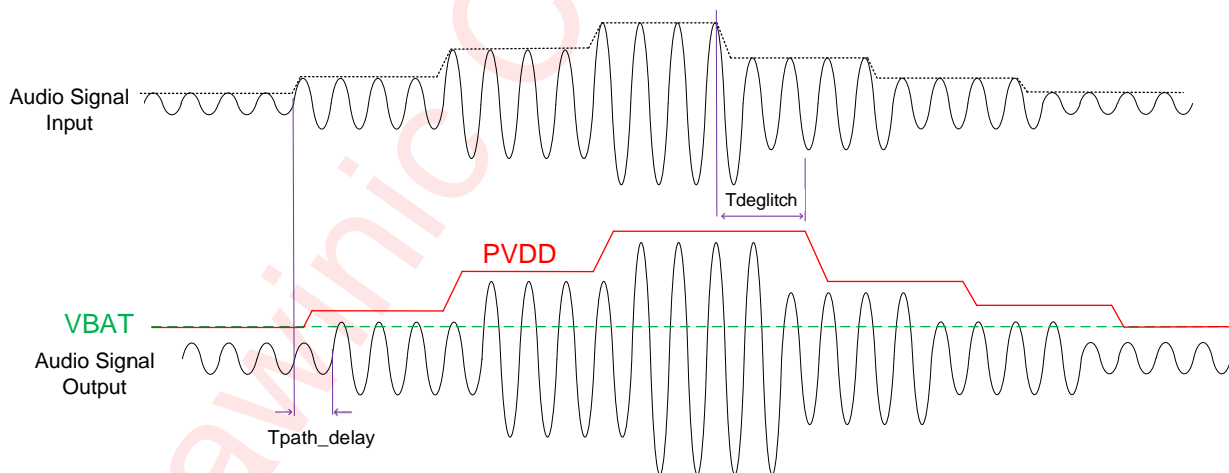


Figure 17 Boost Circuit Behavior in Smart Boost 2 Mode

## PROTECTION MECHANISMS

### Over Voltage Protection (OVP)

The boost circuit has integrated the over voltage protection control loop. When the output voltage PVDD is above the threshold, the boost circuits will stop working, until the voltage of PVDD going down and under the normal fixed working voltage.

### Over Temperature Protection (OTP)

The device has automatic temperature protection mechanism which prevents heat damage to the chip. It is triggered when the junction temperature is larger than the preset temperature high threshold (default = 150°C). When it happens, the output stages will be disabled. When the junction temperature drops below the preset temperature low threshold (less than 130°C), the output stages will start to operate normally again

### Over Current (Short) Protection (OCP)

The short circuit protection function is triggered when VOP/VON is short to PVDD/GND or VOP is short to VON, the output stages will be shut down to prevent damage to itself. When the fault condition is disappeared, the output stages of device will restart.

### Under Voltage Detection (UVL)

The interrupt bit SYSINT.UVLI will be set to 1 when under voltage occurs, which will be cleared by a read operation of SYSINT register. Usually the SYSINT.UVLI bit can be used to check whether an unexpected under-voltage event has taken place or not.

## BATTERY VOLTAGE MONITORING

The device monitors the voltage on the VDD pin, which is most commonly the battery for the system. The battery voltage level is available via bits VBAT\_DET in the Battery Supply Voltage register VBAT. Status bits VBAT\_DET can be used to calculate the battery voltage. The battery voltage level  $V_{BAT}$  is:

$$V_{BAT} = \frac{VBAT\_DET}{2^{10} - 1} \times 6.025V$$

For example, if VBAT\_DET = 1001100011, the battery voltage level  $V_{BAT}$  is equal to 3.6V.

## DIE TEMPERATURE MONITORING

The device monitors the die temperature and the result is available via bits TEMP\_DET in the Temperature register TEMP. The TEMP\_DET is a two's complement value. For example, if TEMP\_DET = 00011001, the die temperature is 25°C.

## CURRENT SENSING

The device provides speaker current sense for real time monitoring of loudspeaker behavior. Current sensing is not disturbed by capacitance (<1nF) on the output lines or on the long speaker tracks. The current sensing transfer function  $I_{SNS}$  is:

$$I_{SNS} = \frac{D_{OUT}}{2^{15} - 1} \times 3.667A$$

$D_{OUT}$ : the current sense I<sup>2</sup>S output stream

## VOLTAGE SENSING

In the device, the speaker voltage sensing is done either internally before signal is being output to speaker or externally at speaker pads. This function is for real time monitoring of loudspeaker behavior. The voltage sensing transfer function  $V_{SNS}$  is:

$$V_{SNS} = \frac{D_{OUT}}{2^{15} - 1} \times V_{fs}$$

The  $V_{fs}$  of internally and externally voltage sensor is 11.79V and 16.5V respectively.

## AMPLIFIER TRANSFER FUNCTION

The transfer function from the input to the amplifier PWM output (when no gain and attenuation is applied in digital signal domain) is:

$$V_o = AMP\_NORM\_V \times D_{in}$$

$D_{in}$ : the level of input signal with a range from -1 to +1.

$AMP\_NORM\_V$ : the equivalent amplifier output voltage when  $D_{in}$  is 1. In receiver mode the  $AMP\_NORM\_V$  is 4.5V, in speaker mode it's 12V.

## RECEIVER MODE

The device built-in Receiver mode is easy to realize the Speaker and Receiver combo applications, it saves the system cost and board space. If the receiver magnification is one times, the noise floor will be 14uV. Speaker and Receiver combo applications can be realized without changing any hardware.

When the device is set to receiver mode, the power supply of Class D driver stage is from VDD directly without boost.

## I<sup>2</sup>C INTERFACE

This device supports the I<sup>2</sup>C serial bus and data transmission protocol in fast mode at 400 kHz. This device operates as a slave on the I<sup>2</sup>C bus. Connections to the bus are made via the open-drain I/O pins SCL and SDA. The pull-up resistor can be selected in the range of 1k~10kΩ and the typical value is 4.7kΩ. This device can support different high level (1.8V~3.3V) of this I<sup>2</sup>C interface.

## DEVICE ADDRESS

The I<sup>2</sup>C device address (7-bit) can be set using the AD pin according to the following table: The AD1, AD2 pin configures the two LSB bits of the following 7-bit binary address A6-A0 of 01101xx. The permitted I<sup>2</sup>C addresses are 0x34(7-bit) through 0x37(7-bit).

**Table 4 Address Selection**

AD2	AD1	Address(7-bit)
GND	GND	0x34
GND	DVDD	0x35
DVDD	GND	0x36
DVDD	DVDD	0x37

## DATA VALIDATION

When SCL is high level, SDA level must be constant. SDA can be changed only when SCL is low level.

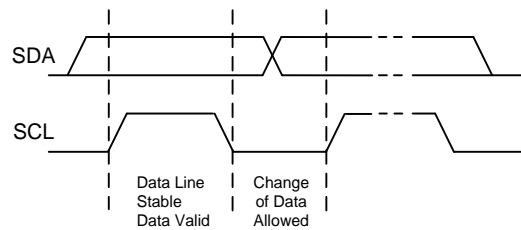


Figure 18 Data Validation Diagram

### I<sup>2</sup>C START/STOP

I<sup>2</sup>C start: SDA changes from high level to low level when SCL is high level.

I<sup>2</sup>C stop: SDA changes from low level to high level when SCL is high level.

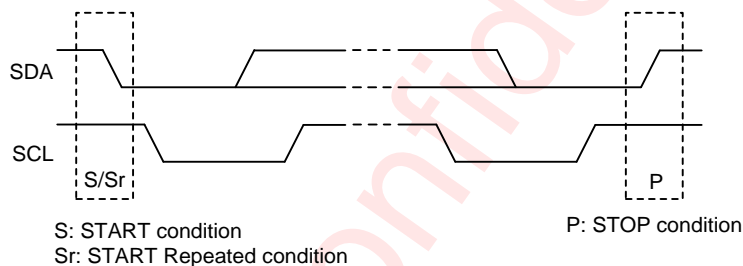


Figure 19 I<sup>2</sup>C Start/Stop Condition Timing

### ACK (ACKNOWLEDGEMENT)

ACK means the successful transfer of I<sup>2</sup>C bus data. After master sends 8bits data, SDA must be released; SDA is pulled to GND by slave device when slave acknowledges.

When master reads, slave device sends 8bit data, releases the SDA and waits for ACK from master. If ACK is send and I<sup>2</sup>C stop is not send by master, slave device sends the next data. If ACK is not send by master, slave device stops to send data and waits for I<sup>2</sup>C stop.

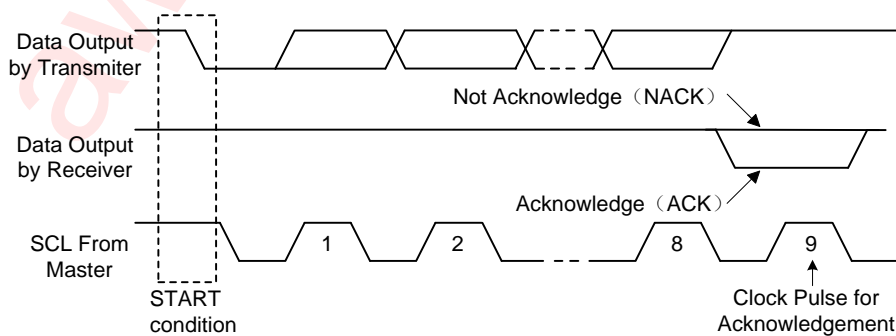


Figure 20 I<sup>2</sup>C ACK Timing

## WRITE CYCLE

One data bit is transferred during each clock pulse. Data is sampled during the high state of the serial clock (SCL). Consequently, throughout the clock's high period, the data should remain stable. Any changes on the SDA line during the high state of the SCL and in the middle of a transaction, aborts the current transaction. New data should be sent during the low SCL state. This protocol allows a single data line to transfer both command/control information and data using the synchronous serial clock.

Each data transaction is composed of a Start Condition, a number of byte transfers (set by the software) and a Stop Condition to terminate the transaction. Every byte written to the SDA bus must be 8 bits long and is transferred with the most significant bit first. After each byte, an Acknowledge signal must follow.

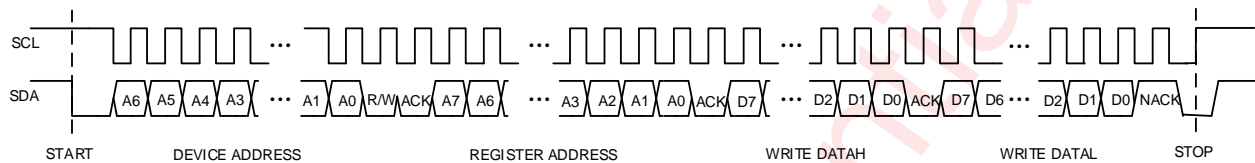


Figure 21 I<sup>2</sup>C Write Byte Cycle

In a write process, the following steps should be followed:

- Master device generates START condition. The "START" signal is generated by lowering the SDA signal while the SCL signal is high.
- Master device sends slave address (7-bit) and the data direction bit ( $r/w = 0$ ).
- Slave device sends acknowledge signal if the slave address is correct.
- Master sends control register address (8-bit).
- Slave sends acknowledge signal.
- Master sends high data byte of 16-bit data to be written to the addressed register.
- Slave sends acknowledge signal.
- Master sends low data byte of 16-bit data to be written to the addressed register.
- Slave sends acknowledge signal.
- If master will send further 16-bit data bytes the control register address will be incremented by one after acknowledge signal of step g (repeat step f to g).
- Master generates STOP condition to indicate write cycle end.

## READ CYCLE

In a read cycle, the following steps should be followed:

- Master device generates START condition.
- Master device sends slave address (7-bit) and the data direction bit ( $r/w = 0$ ).
- Slave device sends acknowledge signal if the slave address is correct.
- Master sends control register address (8-bit).
- Slave sends acknowledge signal.

- f) Master generates STOP condition followed with START condition or REPEAT START condition.
- g) Master device sends slave address (7-bit) and the data direction bit ( $r/w = 1$ ).
- h) Slave device sends acknowledge signal if the slave address is correct.
- i) Slave sends read high data byte of 16-bit data from addressed register.
- j) Master sends acknowledge signal.
- k) Slave sends read low data byte of 16-bit data from addressed register.
- l) If the master device sends acknowledge signal, the slave device will increase the control register address by one, then send the next 16-bit data from the new addressed register.
- m) If the master device generates STOP condition, the read cycle is ended.

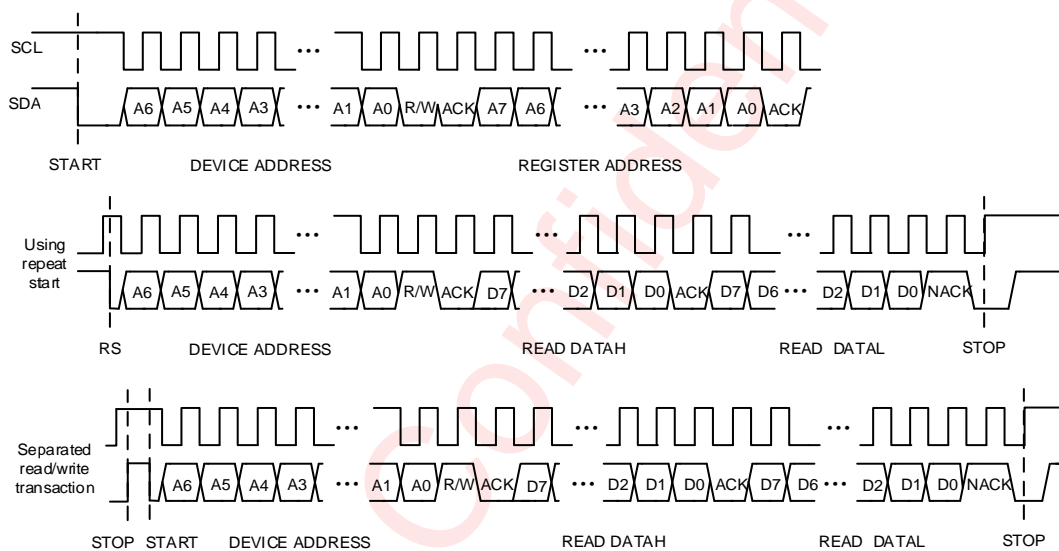


Figure 22 I<sup>2</sup>C Read Byte Cycle

## REGISTER MAP

## REGISTER DESCRIPTION

## REGISTER LIST

ADDR	NAME	R/W	Bit15	Bit14	Bit13	Bit12	Bit11	Bit10	Bit9	Bit8	Bit7	Bit6	Bit5	Bit4	Bit3	Bit2	Bit1	Bit0	Default		
0x00	ID	RO	IDCODE																0x2049		
0x01	SYSST	RO		UVLS	ADPS		BSTOCS	OVPS	BSTS	SWS	CLIPS	WDS	NOCLKS	CLKS	OCDS	CLIP_PRE	OTHS	PLLS	0x0000		
0x02	SYSINT	RC		UVLI	ADPI		BSTOCI	OVPI	BSTI	SWI	CLIP	WDI	NOCLKI	CLKI	OCDI	CLIP_PREI	OTHI	PLLI	0x0000		
0x03	SYSINTM	RW		UVLM	ADPM		BSTOCM	OVPM	BSTM	SWM	CLIPM	WDM	NOCLKM	CLKM	OCDM	CLIP_PREM	OTHM	PLLM	0xFFFF		
0x04	SYSCTRL	RW					RMSE	HAGCE	HDCCE	HMUTE	RCV_MODE	I2SEN	WSINV	BCKINV	IPLL	DSPBY	AMPPD	PWDN	0x5307		
0x05	SYSCTRL2	RW	VOL									INTMODE	INTN							0x0009	
0x06	I2SCTRL	RW		SLOT_NUM			CHSEL	I2SMD		I2SFS		I2SBCK		I2SSR				0x04E8			
0x07	I2SCFG1	RW	I2S_RXL_SLOTVLD				I2S_RXR_SLOTVLD				I2S_TX_SLOTVLD				FSYNC_TYPE	I2SCHS	I2SRXEN	I2STXEN	0x0102		
0x08	I2SCFG2	RW		ULS_MODE	ULS_EN		IV2CH	I2S_TXEDGE	I2SDOSEL	DOHZ	DRVSTREN	INPLEV		CFSEL				0x0060			
0x09	HAGCCFG1	RW	RVTH								AVTH								0x3940		
0x0a	HAGCCFG2	RW	ATTH																0x0030		
0x0b	HAGCCFG3	RW	RTTH																0x01E0		
0x0c	HAGCCFG4	RW	HOLDTH																0x1C64		
0x21	VBAT	RO	VBAT_DET																0x0263		
0x22	TEMP	RO	TEMP_DET																0x0019		
0x23	PVDD	RO	PVDD_DET																0x0263		
0x60	BSTCTRL1	RW		BST_RTH									BST_ATH								0x0402
0x61	BSTCTRL2	RW		BST_MODE				BST_TDEG					BST_VOUT_SET								0x6B33

**DETAILED REGISTER DESCRIPTION**

ID: (Address 00h)				
Bit	Symbol	R/W	Description	Default
15:0	IDCODE	RO	Chip ID (2049h) will be returned after read. All configuration registers will be reset to default value after 0x55aa is written	0x2049

SYSST: (Address 01h)				
Bit	Symbol	R/W	Description	Default
15	Reserved	RO	Not used	0
14	UVLS	RO	VDD under voltage indicator 0: Normal 1: UVLO	0
13	ADPS	RO	Boost Adaptive status. 0: Transparent 1: Boost	0
12	Reserved	RO	Not used	0
11	BSTOCS	RO	Boost over current indicator 0: Normal 1: Over Current	0
10	OVPS	RO	Boost OVP status indicator 0: Normal 1: OVP	0
9	BSTS	RO	Boost start up finished. 0: Not finished 1: Finished	0
8	SWS	RO	Amplifier switching status. 0: Not switching 1: Switching	0
7	CLIPS	RO	Amplifier clipping status. 0: Not clipping 1: Clipping	0
6	WDS	RO	DAP watch-dog status 0: Normal 1: Abnormal	0
5	NOCLKS	RO	The reference clock of PLL is not available 0: Clock Ok 1: No Clock	0
4	CLKS	RO	Internal clocks' status flag 0: More than one clocks are not stable 1: Stable	0
3	OCDS	RO	Over current status in amplifier 0: Normal 1: OC	0
2	CLIP_PRES	RO	Amplifier almost clipping status. 0: Not clipping 1: Clipping	0



1	OTHS	RO	Die Temperature is higher than 150degrees 0: Normal 1: OT	0
0	PLLS	RO	PLL locked status. 0: Unlocked 1: Locked	0

SYSINT: (Address 02h)				
Bit	Symbol	R/W	Description	Default
15	Reserved	RC	Not used	0
14	UVLI	RC	Interrupt indicator for Power On and UVLS	0
13	ADPI	RC	Interrupt indicator for ADPS	0
12	Reserved	RC	Not used	0
11	BSTOCI	RC	Interrupt indicator for BSTOCS.	0
10	OVPI	RC	Interrupt indicator for OVPS.	0
9	BSTI	RC	Interrupt indicator for BSTS.	0
8	SWI	RC	Interrupt indicator for SWS.	0
7	CLIP_I	RC	Interrupt indicator for CLIPS.	0
6	WDI	RC	Interrupt indicator for WDS	0
5	NOCLKI	RC	Interrupt indicator for NOCLKS.	0
4	CLKI	RC	Interrupt indicator for CLKS.	0
3	OCDI	RC	Interrupt indicator for OCDS	0
2	CLIP_PREI	RC	Interrupt indicator for CLIP_PRES	0
1	OTHI	RC	Interrupt indicator for OTHS.	0
0	PLLI	RC	Interrupt indicator for PLLS.	0

Note: It will be set to '1' once corresponding status bit changed, and all the interrupt bits will be cleared after reading 0x02 via IIC bus.

SYSINTM: (Address 03h)				
Bit	Symbol	R/W	Description	Default
15	Reserved	RW	Not used	1
14	UVLM	RW	Interrupt mask for UVLI.	1
13	ADPM	RW	Interrupt mask for ADPI	1
12	Reserved	RW	Not used	1
11	BSTOCM	RW	Interrupt mask for BSTOCI.	1
10	OVPM	RW	Interrupt mask for OVPI	1
9	BSTM	RW	Interrupt mask for BSTI.	1
8	SWM	RW	Interrupt indicator for SWI.	1
7	CLIPM	RW	Interrupt indicator for CLIP_I.	1
6	WDM	RW	Interrupt mask for WDI.	1
5	NOCLKM	RW	Interrupt mask for NOCLKI.	1
4	CLKM	RW	Interrupt mask for CLKI.	1
3	OCDM	RW	Interrupt mask for OCDI.	1
2	CLIP_PREM	RW	Interrupt mask for CLIP_PREI.	1
1	OTHM	RW	Interrupt mask for OTHI.	1
0	PLLM	RW	Interrupt mask for PLLI.	1

Note: All the mask bits are high-active. The interrupt will be masked when its corresponding mask bit is set to "1", then this interrupt will not be sent to INTN pin.

SYSCTRL: (Address 04h)				
Bit	Symbol	R/W	Description	Default
15:12	Reserved	RW	Not used	0x5
11	RMSE	RW	Hardware HAGC mode selection 0: Peak AGC 1: RMS AGC	0
10	HAGCE	RW	Disable/Enable Hardware AGC 0: Disable 1: Enable	0
9	HDCCE	RW	Disable/Enable Hardware DC Canceling module 0: Disable 1: Enable	1
8	HMUTE	RW	Disable/Enable Hardware mute module 0: Disable 1: Enable	1
7	RCV_MODE	RW	Receiver mode enable, active "1". 0: Speaker 1: Receiver	0
6	I2SEN	RW	Disable/Enable whole I2S interface module 0: Disable 1: Enable	0
5	WSINV	RW	I2S Left/Right channel switch control 0: Not switch 1: Switch	0
4	BCKINV	RW	I2S bit clock invert control 0: Not invert 1: Inverted	0
3	IPLL	RW	PLL reference clock selection 0: BCK 1: WCK	0
2	DSPBY	RW	DSP bypass control bit 0: Working 1: Bypass	1
1	AMPPD	RW	Amplifier power down control bit, Power-Down until system configuration finished 0: Working 1: Power Down	1
0	PWDN	RW	System power down control bit 0: Working 1: Power Down	1

SYSCTRL2: (Address 05h)				
Bit	Symbol	R/W	Description	Default
15:6	VOL	RW	Volume control, from 0 to -95.875dB [5:0] : in unit of -0.125dB [9:6] : in unit of -6dB	0
5	INTMODE	RW	Interrupt pad INTN output mode selection 0: Open-drain 1: Push & Pull	0

4	INTN	RW	Interrupt pad INTN pin-source selection 0: SYSINT 1: SYSST	0
3:0	Reserved	RW	Not used	9

I2SCTRL: (Address 06h)				
Bit	Symbol	R/W	Description	Default
15	Reserved	RW	Not used	0
14:12	SLOT_NUM	RW	I2S interface mode control (Max 8 slots support). 000: I2S mode 001: TDM1s 010: TDM2s 011: TDM4s 100: TDM6s 101: TDM8s Others: Reserved	0
11:10	CHSEL	RW	Left/right channel selection for I2S input 00: Reserved 01: Left 10: Right 11: Mono	1
9:8	I2SMD	RW	I2S data format mode selection 00: Philip Standard 01: MSB justified 10: LSB justified 11: Reserved	0
7:6	I2SFS	RW	I2S data resolution selection 00: 16 bits 01: 20 bits 10: 24 bits 11: 32 bits	3
5:4	I2SBCK	RW	I2S BCK mode selection 00: 32*fs 01: 48*fs 10: 64*fs 11: Reserved	2
3:0	I2SSR	RW	I2S interface sample rate configuration 0000: 8 kHz 0001: 11 kHz 0010: 12 kHz 0011: 16 kHz 0100: 22 kHz 0101: 24 kHz 0110: 32 kHz 0111: 44 kHz 1000: 48 kHz 1001: 96 kHz Others: Reserved	8

I2SCFG1: (Address 07h)				
Bit	Symbol	R/W	Description	Default
15:12	I2S_RXL_SLOTVLD	RW	RX left channel slot selection 0000: Slot 0 0001: Slot 1 0010: Slot 2 0011: Slot 3 ..... 0111: Slot 7 Others: Reserved	0
11:8	I2S_RXR_SLOTVLD	RW	RX right channel slot selection 0000: Slot 0 0001: Slot 1 0010: Slot 2 0011: Slot 3 ..... 0111: Slot 7 Others: Reserved	1
7:4	I2S_TX_SLOTVLD	RW	TX slot selection, data will be sent to one of the 8 slots. 0000: Slot 0 0001: Slot 1 0010: Slot 2 0011: Slot 3 ..... 0111: Slot 7 Others: Reserved	0
3	FSYNC_TYPE	RW	Audio Frame synchronization signal (WCK) pulse width configuration 0: One-slot 1: One-bck	0
2	I2SCHS	RW	I2S Tx Channel selection 0: Left 1: Right	0
1	I2SRXEN	RW	Disable/Enable I2S receiver module 0: Disable 1: Enable	1
0	I2STXEN	RW	Disable/Enable I2S transmitter module 0: Disable 1: Enable	0

I2SCFG2: (Address 08h)				
Bit	Symbol	R/W	Description	Default
15:14	Reserved	RW	Not used	0
13	ULS_MODE	RW	Ultrasonic mode control bit Ultrasonic signal could be mixed with audio signal in one slot, or be sent into another slot separately. 0: Mixed 1: TDM	0
12	ULS_EN	RW	Ultrasonic mode enable 0: Disable 1: Enable	0
11:10	Reserved	RW	Not used	0

9	IV2CH	RW	I2S TX channel data packing mode control. When I2SBCK is set to 32*fs mode, Current & Voltage data could be separately transmitted to I2S Left & Right channels by using Special mode. 0: Legacy 1: Special	0
8	I2S_TXEDGE	RW	I2S TX clock edge selection 0: Negedge 1: Posedge	0
7	I2SDOSEL	RW	I2S unused channel data selection 0: Zeros 1: TXData	0
6	DOHZ	RW	Unused channel control When it is set to 0, all channels are available. Otherwise unused channel is set to be HiZ. 0: All 1: HiZ	1
5	DRVSTREN	RW	I2S_DATAO PAD driving strength setting 0: 4mA 1: 12mA	1
4	INPLEV	RW	Input level selection bit I2S input signal will be attenuated by -6dB at first when this register is set to 1. 0: Not attenuated 1: Attenuated	0
3	Reserved	RW	Not used	0
2:0	CFSEL	RW	I2S legacy path output data selection 000: HAGC 001: DFIFO 010: Ultrasonic data 011: IV 100: IVBT	0

HAGCCFG1: (Address 09h)				
Bit	Symbol	R/W	Description	Default
15:8	RVTH	RW	Release Amplitude threshold, in percent of signal full scale	0x39
7:0	AVTH	RW	Attack Amplitude threshold, in percent of signal full scale RMSE = 0 (Peak AGC) : $P0 = ((i/256 * Gain)^2) / R_{Load} / 2$ RMSE = 1 (RMS AGC) : $P0 = (i/256) * (Gain^2) / R_{Load}$ i is the register value, default 0x40 Gain is the Speaker Gain, default 12 $R_{Load}$ is 8ohm/6ohm for different application, default 8 ohm	0x40

HAGCCFG2: (Address 0ah)				
Bit	Symbol	R/W	Description	Default
15:0	ATTH	RW	Attack time threshold in unit of 20.8μs 0: Reserved n: n*20.8us	0x0030

HAGCCFG3: (Address 0bh)				
Bit	Symbol	R/W	Description	Default
15:0	RTTH	RW	Release time threshold in unit of 20.8μs 0: Reserved n: n*20.8μs	0x01E0

VBAT: (Address 21h)				
Bit	Symbol	R/W	Description	Default
15:10	Reserved	RO	Not used	0
9:0	VBAT_DET	RO	Detected Voltage of battery, and the full scale is 6.025V $VBAT=(VBAT\_DET)/1023 \times 6.025$	0x263

TEMP: (Address 22h)				
Bit	Symbol	R/W	Description	Default
15:10	Reserved	RO	Not used	0
9:0	TEMP_DET	RO	Detected Die Temperature (Two's Complement), typical values are as follows. 0x3D8 : -40 degree 0x00 : 0 degree 0x01 : 1 degree 0x19 : 25 degree 0x37 : 55 degree	0x019

PVDD: (Address 23h)				
Bit	Symbol	R/W	Description	Default
15:10	Reserved	RO	Not used	0
9:0	PVDD_DET	RO	Detected Voltage of PVDD, and the full scale is 12.05V $PVDD=(PVDD\_DET)/1023 \times 12.05$	0x263

BSTCTRL1: (Address 60h)				
Bit	Symbol	R/W	Description	Default
15:14	Reserved	RW	Not used	0
13:8	BST_RTH	RW	Smart boost small signal mode release threshold setting. When the input signal is above the threshold, the voltage of PVDD will be raised up and higher than VDD in smart boost mode Threshold = BST_RTH * 1/64 FS	4
7:6	Reserved	RW	Not used	0
5:0	BST_ATH	RW	Smart boost small signal mode attack threshold setting, When the input signal is below the threshold, the VDD is directly output to PVDD in smart boost mode Threshold = BST_ATH * 1/64 FS	2

BSTCTRL2: (Address 61h)				
Bit	Symbol	R/W	Description	Default
15	Reserved	RW	Not used	0
14:12	BST_MODE	RW	BOOST mode selection 000: Transparent 001: Force Boost 101: Smart Boost 1 110: Smart Boost 2 Others: Reserved	0x6

11:8	BST_TDEG	RW	Smart Boost small signal level detection deglitch time 0000: 0.50 ms 0001: 1.00 ms 0010: 2.00 ms 0011: 4.00 ms 0100: 8.00 ms 0101: 10.7 ms 0110: 13.3 ms 0111: 16.0 ms 1000: 18.6 ms 1001: 21.3 ms 1010: 24.0 ms 1011: 32.0 ms 1100: 64.0 ms 1101: 128 ms 1110: 256 ms 1111: 1200 ms	11
7:6	Reserved	RW	Not used	0
5:0	BST_VOUT_SET	RW	BOOST max output voltage control bits (125mV/Step) 000000: 3.125V 000001: 3.250V 000010: 3.375V 000011: 3.500V 000100: 3.625V 000101: 3.750V ..... 111001: 10.250V Others: Reserved	0x33

## APPLICATION INFORMATION

### EXTERNAL COMPONENTS

#### BOOST INDUCTOR SELECTION

Inductance value is limited by the boost converter's internal loop compensation, a large  $L_{SW}$  will reduce the phase margin of the DC-to-DC converter. Also, the inductor should have low core loss at 1MHz (Min.) and low DCR for better efficiency under all operating conditions, the recommended value of inductor is 1 $\mu$ H.

Inductor saturation current and temperature rise current value are important basis for selecting the inductor. As the inductor current increases, inductance value will decline since the magnetic core begins to saturate; on the other hand, the inductor's parasitic resistance inductance and magnetic core loss can lead to temperature rise. The inductor saturation current rating could to be considered with the following equation:

$$I_{L\_PEAK} = \frac{2 * P_{OUT}}{\eta * VDD} + \frac{VDD * (PVDD - VDD)}{2 * L_{SW} * F_{BST} * PVDD}$$

Following is the inductor selection reference for typical speaker impedances.

V <sub>DD</sub> (V)	PVDD (V)	R <sub>L</sub> ( $\Omega$ )	Efficiency (%)	P <sub>OUT</sub> (W)	I <sub>L\_PEAK</sub> (A)	I <sub>SAT\_min</sub> (A)
4.2	10	8	76	5.3	4.08	4.5
4.2	10	6	74	5.4	4.23	4.5

#### BOOST CAPACITOR SELECTION

Boost output capacitor is usually within the range 0.1 $\mu$ F~47 $\mu$ F. The ceramic capacitors with low ESR are recommended for low ripple voltage which is determined as following equation:

$$\Delta PVDD = \frac{(PVDD - VDD) * I_{OUT}}{\eta * PVDD * F_{BST} * C_{OUT}} + \left( \frac{I_{OUT} * PVDD}{VDD} + \frac{VDD * (PVDD - VDD)}{2 * L_{SW} * F_{BST} * PVDD} \right) * R_{C\_ESR}$$

Capacitor is selected based on the requirements of temperature stability and voltage stability, considering the material, size, capacitor voltage, and capacitance values. It is suggested to use Class II type (EIA) multilayer ceramic capacitors (MLCC). Its internal dielectric is ferroelectric material (typically BaTiO<sub>3</sub>), a high the dielectric constant in order to achieve smaller size, but at the same Class II type (EIA) multilayer ceramic capacitors has poor temperature stability and voltage stability as compared to the Class I type (EIA) capacitance.

Please notice the DC bias characteristics when selecting capacitors. For typical applications, it is necessary to ensure that the residual capacitance is higher than **3.6 $\mu$ F**. Take the following capacitances as the output capacitor of boost for example:

Value	Material	Size (mm <sup>3</sup> )	Rated Voltage	Quantity	Value@10.25V
10 $\mu$ F	X5R	1.00x0.50x0.50 (0603)	25V	2	3.8 $\mu$ F
22 $\mu$ F	X5R	2.00x0.80x0.85 (0805)	25V	1	4.2 $\mu$ F

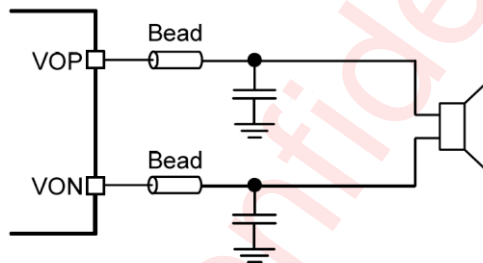


## SUPPLY DECOUPLING CAPACITOR

The device is a high-performance audio amplifier that requires adequate power supply decoupling. A  $1\mu\text{F}$  low equivalent-series-resistance (ESR) ceramic capacitor is recommended. This choice of capacitor and placement helps with higher frequency transients, spikes, or digital hash on the line. Additionally, placing this decoupling capacitor close to the device is important, as any parasitic resistance or inductance between the device and the capacitor causes efficiency loss. In addition to the  $1\mu\text{F}$  ceramic capacitor, place a  $10\mu\text{F}$  capacitor on the VBAT supply trace. This larger capacitor acts as a charge reservoir, providing energy faster than the board supply, thus helping to prevent any drop in the supply voltage.

## FILTER FREE OPERATION AND FERRITE BEAD FILTERS

If the PA is close to the EMI sensitive circuits and/or there are long leads from amplifier to speaker, a ferrite bead filter could be used, and placed as close as possible to the output pins of the PA. When choosing a ferrite bead, select a ferrite bead with adequate current rating to prevent distortion of the output signal. In addition, a  $0.1\text{nF}$  ceramic capacitor is typically recommended, and its rated voltage should be above  $25\text{V}$ .

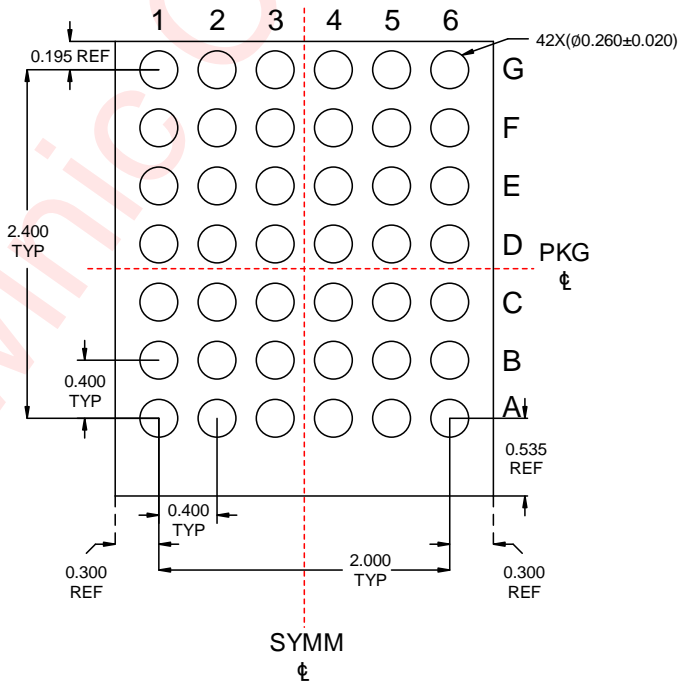
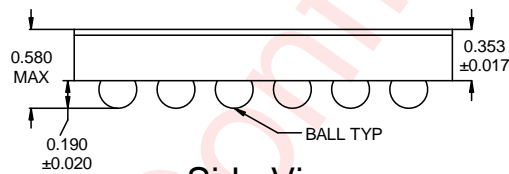
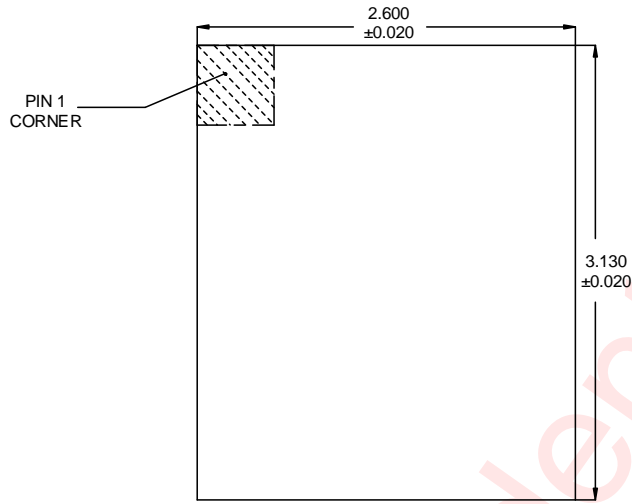


## LAYOUT CONSIDERATION

In order to obtain excellent performance of the PA, the below PCB layout guidelines should be followed:

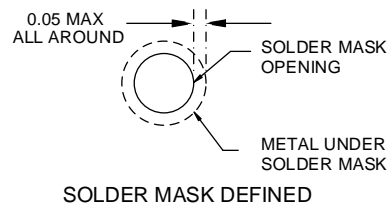
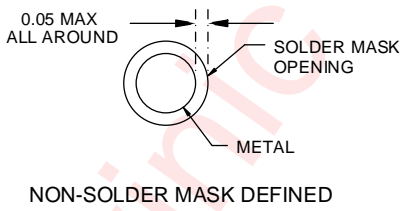
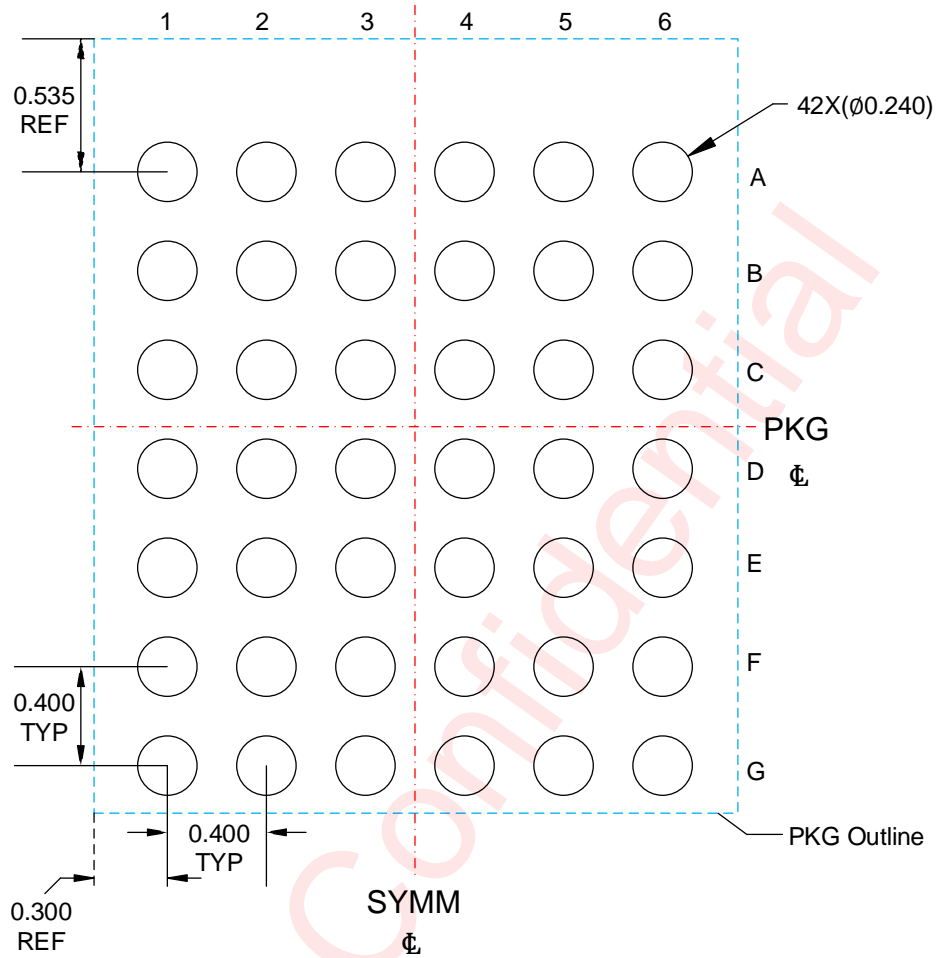
1. All the filter capacitors should be placed close to the corresponding pins of the PA, including VBST, VDD, DVDD.
2. The traces of SW pin should support currents up to the device over-current limit (peak current 4A), and the input line from the battery to the SW pin should be traced above 4A current drive.
3. For the case of speaker impedance equal to  $8\Omega$ , try to provide a separate, short and thick power line to the PA, the copper width is recommended to be larger than 4mm.
4. The beads and capacitor should be placed close to the VON and VOP pin. The output line from PA to speaker should be as short and thick as possible. The width is recommended to be larger than 1.2mm.
5. The via numbers determine the current capability. Typically, the boost converter trace need four via to handle the current requirement around 4A.

PACKAGE DESCRIPTION



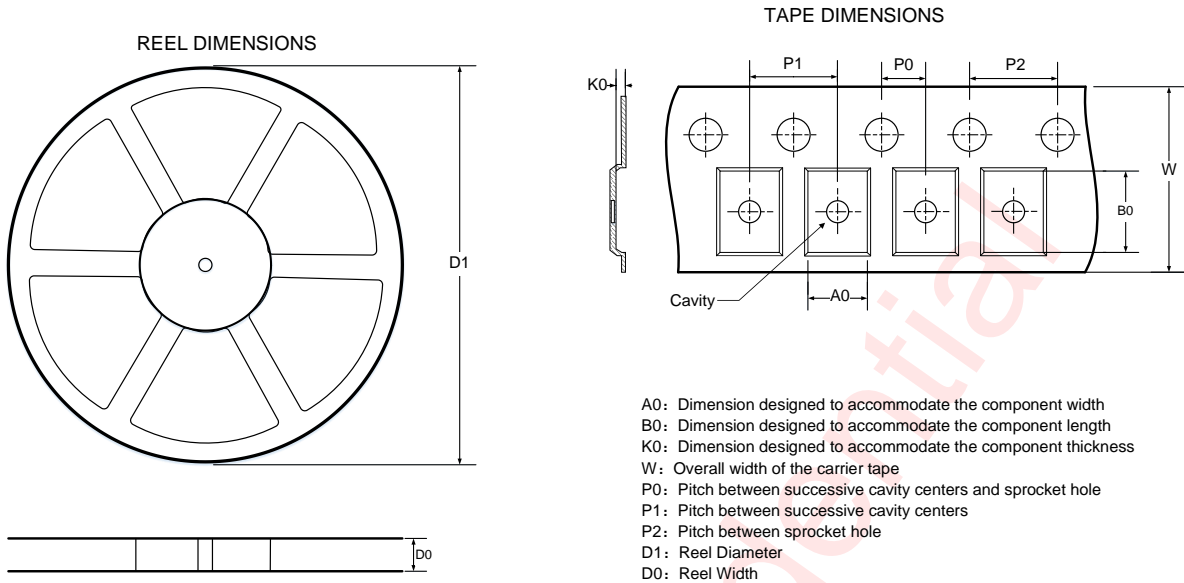
Unit: mm

LAND PATTERN DATA

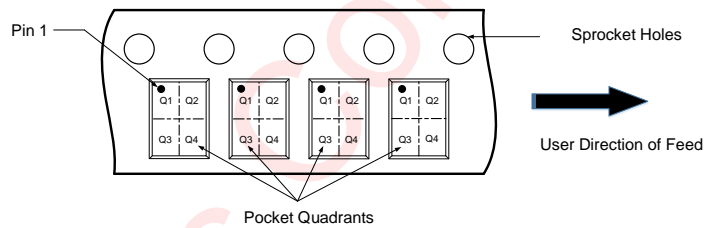


UNIT: mm

## TAPE AND REEL INFORMATION



### QUADRANT ASSIGNMENTS FOR PIN 1 ORIENTATION IN TAPE



All Dimensions are nominal

D1 (mm)	D0 (mm)	A0 (mm)	B0 (mm)	K0 (mm)	P0 (mm)	P1 (mm)	P2 (mm)	W (mm)	Pin1 Quadrant
330.00	12.40	2.77	3.30	0.73	2.00	8.00	4.00	12.00	Q1

**REVISION HISTORY**

Version	Date	Change Record
V1.0	Sep. 2020	Officially Released
V1.1	May. 2021	Update typical characteristic curves

awinic Confidential

## DISCLAIMER

Information in this document is believed to be accurate and reliable. However, Shanghai AWINIC Technology Co., Ltd (AWINIC Technology) does not give any representations or warranties, expressed or implied, as to the accuracy or completeness of such information and shall have no liability for the consequences of use of such information.

AWINIC Technology reserves the right to make changes to information published in this document, including without limitation specifications and product descriptions, at any time and without notice. Customers shall obtain the latest relevant information before placing orders and shall verify that such information is current and complete. This document supersedes and replaces all information supplied prior to the publication hereof.

AWINIC Technology products are not designed, authorized or warranted to be suitable for use in medical, military, aircraft, space or life support equipment, nor in applications where failure or malfunction of an AWINIC Technology product can reasonably be expected to result in personal injury, death or severe property or environmental damage. AWINIC Technology accepts no liability for inclusion and/or use of AWINIC Technology products in such equipment or applications and therefore such inclusion and/or use is at the customer's own risk.

Applications that are described herein for any of these products are for illustrative purposes only. AWINIC Technology makes no representation or warranty that such applications will be suitable for the specified use without further testing or modification.

All products are sold subject to the general terms and conditions of commercial sale supplied at the time of order acknowledgement.

Nothing in this document may be interpreted or construed as an offer to sell products that is open for acceptance or the grant, conveyance or implication of any license under any copyrights, patents or other industrial or intellectual property rights.

Reproduction of AWINIC information in AWINIC data books or data sheets is permissible only if reproduction is without alteration and is accompanied by all associated warranties, conditions, limitations, and notices. AWINIC is not responsible or liable for such altered documentation. Information of third parties may be subject to additional restrictions.

Resale of AWINIC components or services with statements different from or beyond the parameters stated by AWINIC for that component or service voids all express and any implied warranties for the associated AWINIC component or service and is an unfair and deceptive business practice. AWINIC is not responsible or liable for any such statements.

单击下面可查看定价，库存，交付和生命周期等信息

[>>AWINIC\(艾为\)](#)