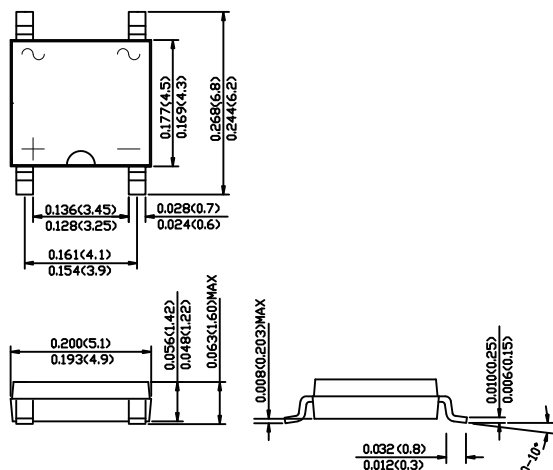


# SABS22 THRU SABS220

## SURFACE MOUNT SCHOTTKY BRIDGE RECTIFIERS

Reverse Voltage - 20 to 200 Volts Forward Current - 2.0 Ampere

### ABS



Dimensions in inches and (millimeters)

### FEATURES

- ◆ The plastic package carries Underwriters Laboratory Flammability Classification 94V-0
- ◆ Schottky technology
- ◆ Ideal for automated placement
- ◆ High surge current capability
- ◆ Built-in strain relief, ideal for automated placement
- ◆ High forward surge current capability
- ◆ High temperature soldering guaranteed: 260°C/10 seconds at terminals
- ◆ Green compound (halogen & Sb<sub>2</sub>O<sub>3</sub> free)

### MECHANICAL DATA

**Case:** Molded plastic body

**Terminals:** Plated leads solderable per MIL-STD-750, Method 2026

**Polarity:** Polarity symbols marked on case

**Mounting Position:** Any

### MAXIMUM RATINGS AND ELECTRICAL CHARACTERISTICS

Ratings at 25°C ambient temperature unless otherwise specified.

Single phase half-wave 60Hz, resistive or inductive load, for capacitive load current derate by 20%.

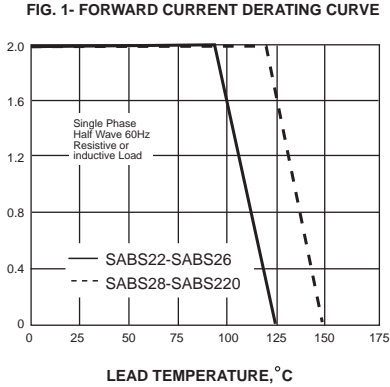
	SYMBOLS	SABS22	SABS23	SABS24	SABS25	SABS26	SABS28	SABS210	SABS215	SABS220	UNITS	
Maximum repetitive peak reverse voltage	V <sub>RRM</sub>	20	30	40	50	60	80	100	150	200	V	
Maximum RMS voltage	V <sub>RMS</sub>	14	21	28	35	42	56	70	105	140	V	
Maximum DC blocking voltage	V <sub>DC</sub>	20	30	40	50	60	80	100	150	200	V	
Maximum average forward rectified current at T <sub>L</sub> (see fig. 1)	I <sub(av)< sub=""></sub(av)<>	2.0									A	
Peak forward surge current 8.3ms single half sine-wave superimposed on rated load	I <sub>FSM</sub>	50.0									A	
Maximum instantaneous forward voltage at 2.0A	V <sub>F</sub>	0.55			0.70		0.85		0.95		V	
Maximum DC reverse current at rated DC blocking voltage T <sub>A</sub> =25°C T <sub>A</sub> =100°C	I <sub>R</sub>	0.5						0.2			mA	
		10.0			5.0		2.0					
Typical junction capacitance (NOTE 1)	C <sub>J</sub>	120			90						pF	
Typical thermal resistance (NOTE 2)	R <sub>θJA</sub>	75.0									°C/W	
Operating junction temperature range	T <sub>J</sub>	-55 to +125					-55 to +150					°C
Storage temperature range	T <sub>STG</sub>	-55 to +150									°C	

**Note:** 1. Measured at 1MHz and applied reverse voltage of 4.0V D.C.

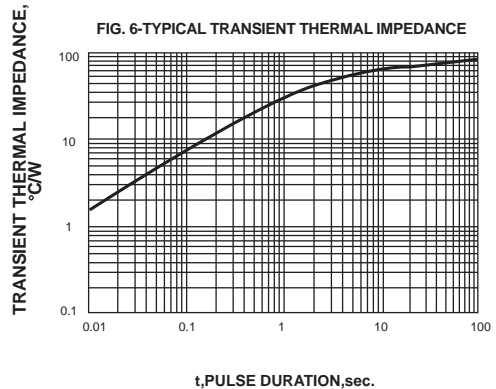
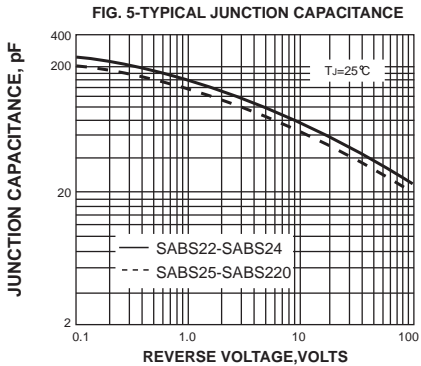
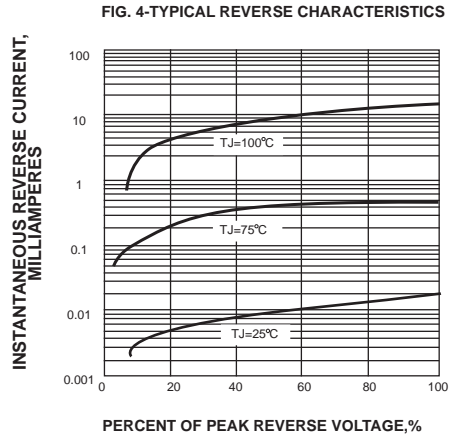
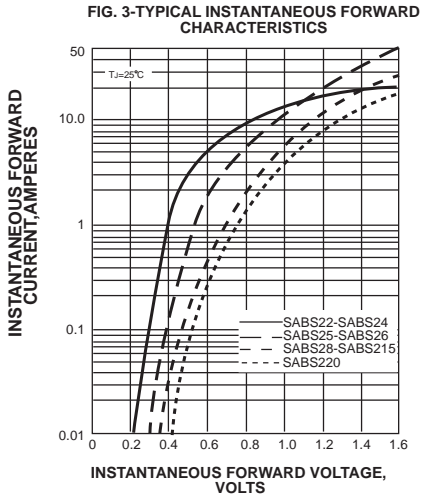
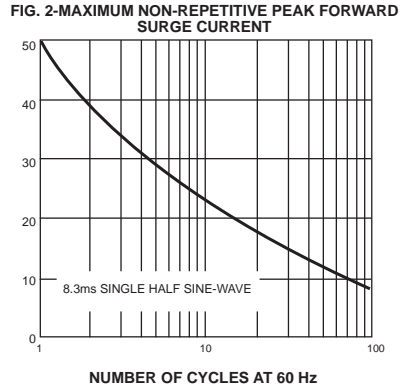
2. P.C.B. mounted with 0.2x0.2" (5.0x5.0mm) copper pad areas

# RATINGS AND CHARACTERISTIC CURVES SABS22 THRU SABS220

AVERAGE FORWARD RECTIFIED CURRENT, AMPERES



PEAK FORWARD SURGE CURRENT, AMPERES



单击下面可查看定价，库存，交付和生命周期等信息

[>>STAR\\_SEA\(星海\)](#)