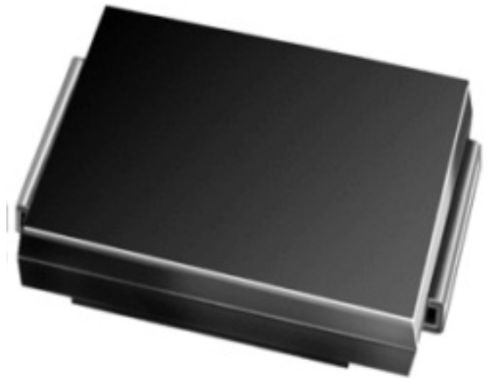


# EFMC504

Surface Mount Glass Passivated Super Fast Rectifiers  
Reverse Voltage 200V Forward Current 5.0A

## 1. FEATURES

- We declare that the material of product compliance with RoHS requirements and Halogen Free.
- Plastic package has Underwriters Laboratory Flammability Classification 94V-0.
- High temperature metallurgically bonded construction.
- Cavity-free glass passivated junction.
- Capable of meeting environmental standards of MIL-S-19500.
- For use in high frequency rectifier circuits.
- Fast Switching for high efficiency
- Typical IR less than 1.0 $\mu$ A.
- High temperature soldering guaranteed:260 $^{\circ}$ C/10 seconds.
- Weight: 0.26g



## 2. DEVICE MARKING AND ORDERING INFORMATION

| Device  | Marking | Shipping       |
|---------|---------|----------------|
| EFMC504 | EFMC504 | 3000/Tape&Reel |

## 3. MAXIMUM RATINGS(Ta = 25 $^{\circ}$ C)

| Parameter  | Symbol        | Limits    | Unit           |
|--|---------------|-----------|----------------|
| Maximum repetitive peak reverse voltage  | VRRM          | 200       | V              |
| Maximum RMS voltage  | VRMS          | 140       | V              |
| Maximum DC blocking voltage  | VDC           | 200       | V              |
| Maximum average forward rectified current at TC = 75 $^{\circ}$ C                                | IF(AV)        | 5         | A              |
| Peak forward surge current 8.3ms single half sine-wave superimposed on rated load (JEDEC Method) | IFSM          | 140       | A              |
| Typical thermal resistance (Note 1)  | R $\theta$ JA | 80        | $^{\circ}$ C/W |
|  | R $\theta$ JC | 20        |                |
| Operating junction and storage temperature range   | TJ, TSTG      | -50 ~+150 | $^{\circ}$ C   |

## 4. ELECTRICAL CHARACTERISTICS (Ta= 25 $^{\circ}$ C)

| Characteristic   | Symbol | Min. | Typ. | Max. | Unit    |
|--|--------|------|------|------|---------|
| Maximum instantaneous forward voltage at 5.0A  | VF     | -    | -    | 0.95 | V       |
| Maximum DC reverse current TA = 25 $^{\circ}$ C at rated DC blocking voltage TJ = 125 $^{\circ}$ C | IR     | -    | -    | 5    | $\mu$ A |
|  |        | -    | -    | 100  |         |
| Typical reverse recovery time (Note 2)   | trr    | -    | -    | 35   | ns      |
| Typical junction capacitance at 4.0V, 1MHz   | CJ     | -    | 21   | -    | PF      |

1. Mounted on 0.31 x 0.31" (8.0 x 8.0mm) copper pads to each terminal
2. IF = 0.5A, IR = 1.0A, IRR = 0.25A

## 5. ELECTRICAL CHARACTERISTICS CURVES

Fig. 1 - Forward Current Derating Curve

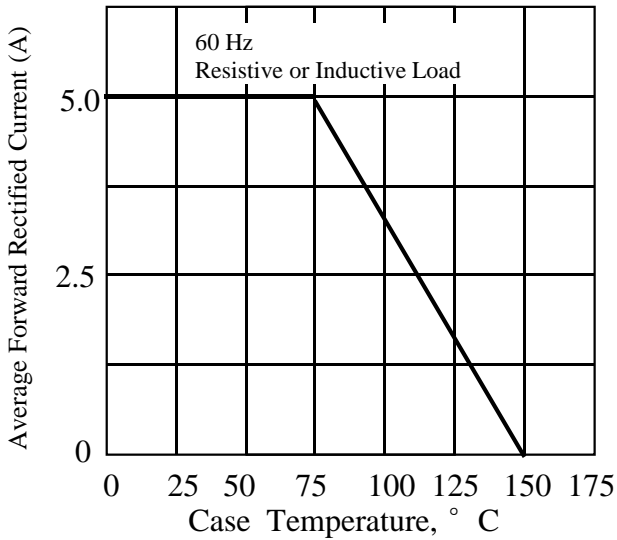


Fig. 2 - Maximum Non-repetitive Peak Forward Surge Current

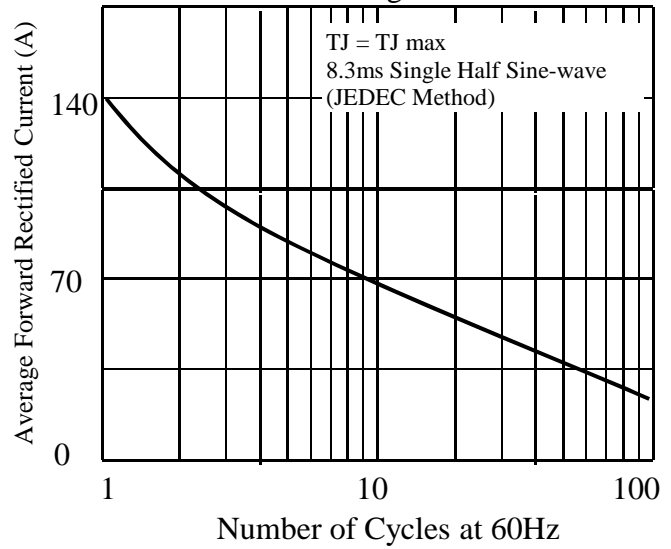


Fig 3. - Typical Instantaneous Forward Characteristics

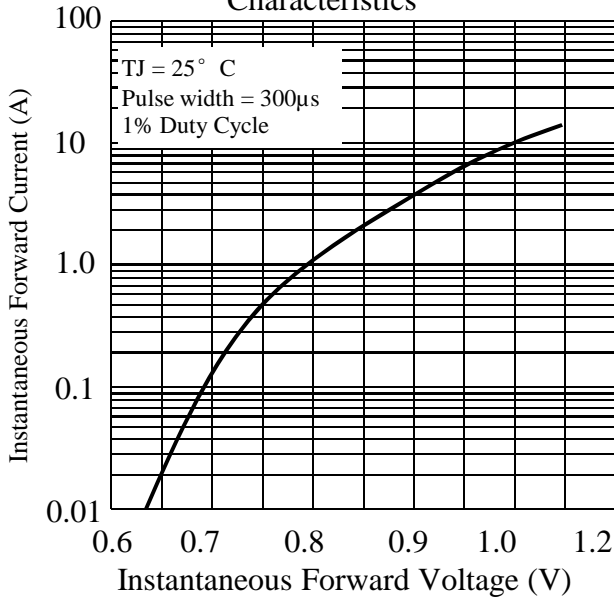


Fig 4. - Typical Reverse Characteristics

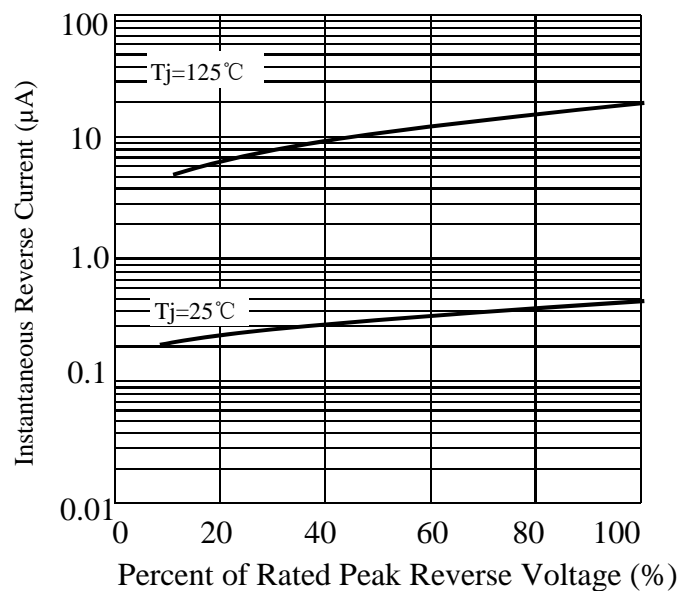
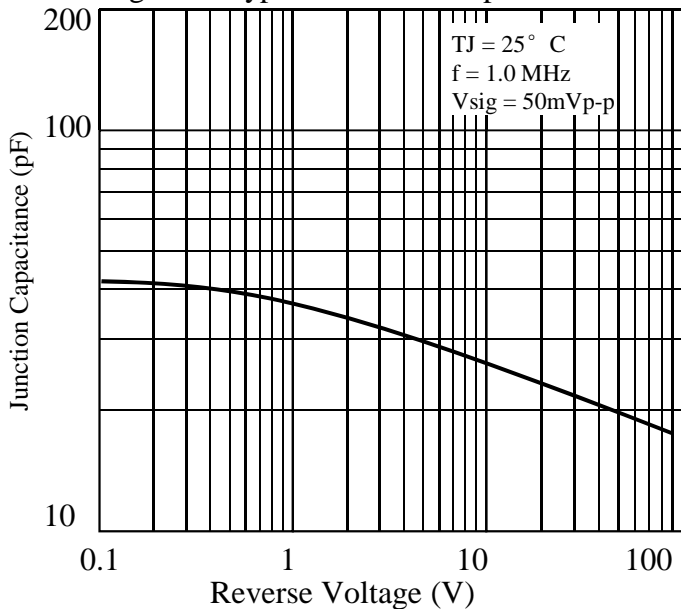
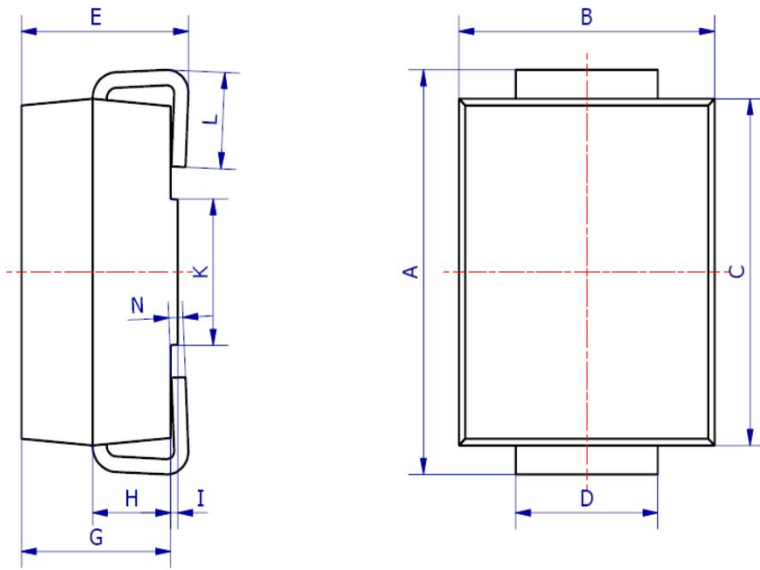


Fig 5. - Typical Junction Capacitance

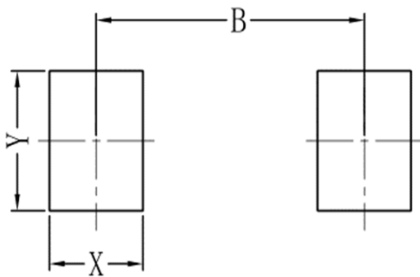


## 6. OUTLINE AND DIMENSIONS



| SMC                  |      |      |      |
|----------------------|------|------|------|
| DIM                  | Min  | Max  | Typ. |
| A                    | 7.70 | 8.30 | 8.00 |
| B                    | 5.85 | 6.25 | 6.05 |
| C                    | 6.65 | 7.05 | 6.85 |
| D                    | 2.80 | 3.20 | 3.00 |
| E                    | 2.45 | 2.85 | 2.65 |
| G                    | 2.10 | 2.50 | 2.30 |
| H                    | 1.00 | 1.40 | 1.20 |
| I                    | 0.05 | 0.15 | 0.10 |
| K                    | 4.30 | 4.70 | 4.50 |
| L                    | 1.00 | 1.50 | 1.25 |
| N                    | 0.10 | 0.30 | 0.20 |
| All Dimensions in mm |      |      |      |

## 7. SOLDERING FOOTPRINT



| SMC |      |
|-----|------|
| DIM | (mm) |
| X   | 1.60 |
| Y   | 3.30 |
| B   | 6.60 |

单击下面可查看定价，库存，交付和生命周期等信息

[>>LRC\(乐山无线电\)](#)