

4

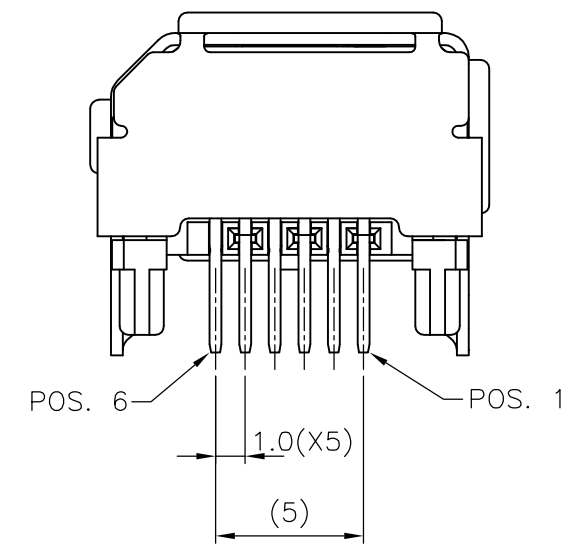
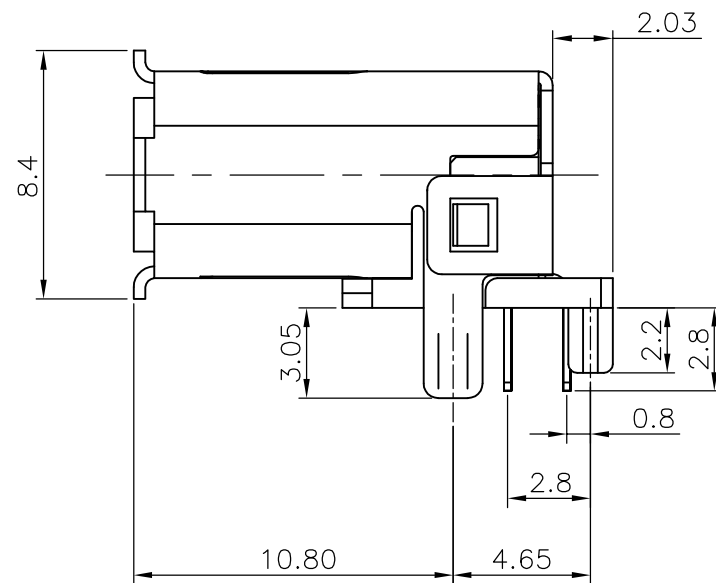
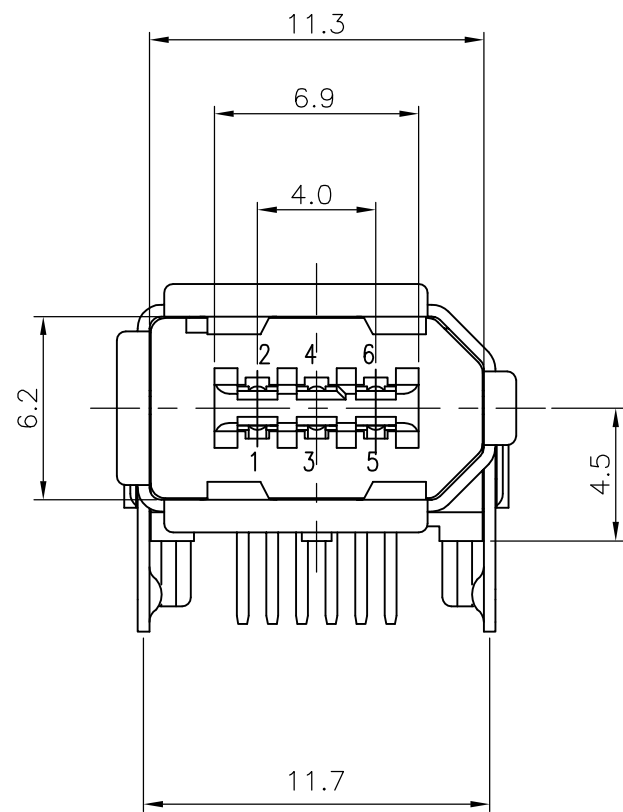
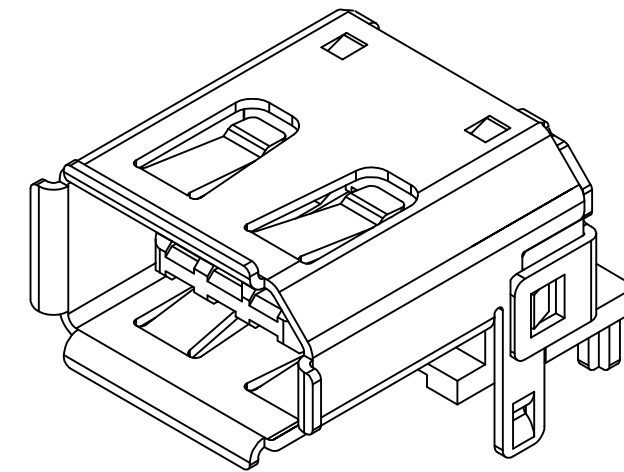
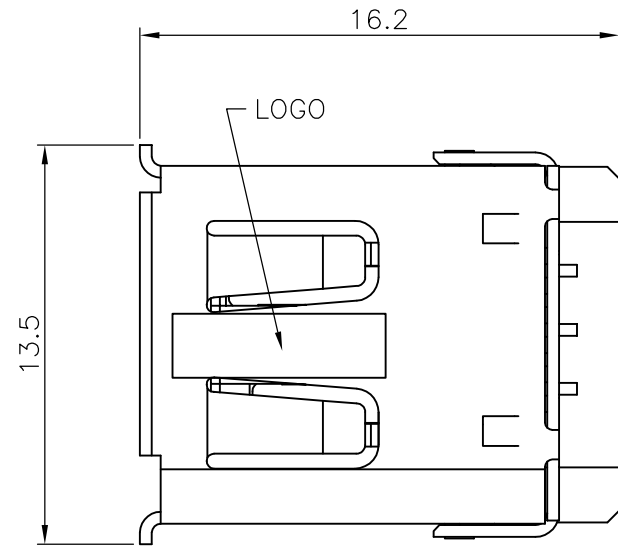
3

2


1

THIS DRAWING IS UNPUBLISHED. RELEASED FOR PUBLICATION  
 © COPYRIGHT BY TYCO ELECTRONICS CORPORATION. ALL RIGHTS RESERVED.

LOC	DIST	REVISIONS					
		P	LTR	DESCRIPTION	DATE	DWN	APVD
-	-		A	RELEASED	15JUN2013	HW	PY
			A1	REVISED	30JUL2013	HW	XX
			A2	ECR-14-008826	13JUL2014	HW	XX



2232260-1  
PART NUMBER

THIS DRAWING IS A CONTROLLED DOCUMENT.		DWN 15JAN2013 HOWELL WANG	 TE Connectivity	
DIMENSIONS: MM		CHK 15JAN2013 KOBBY ZHAO		
TOLERANCES UNLESS OTHERWISE SPECIFIED:		APVD 15JAN2013 PETER YIN	NAME 1394_A RECEPTACLE R/A THRU HOLE TYPE	
0 PLC ± - 1 PLC ± 0.3 2 PLC ± 0.2 3 PLC ± 0.15 4 PLC ± - ANGLES ± 3°		PRODUCT SPEC 108-106127	-	
MATERIAL SEE NOTE		QUALIFICATION TEST REPORT -	SIZE A3	CAGE CODE -
FINISH SEE NOTE		WEIGHT -	DRAWING NO C=2232260	RESTRICTED TO -
CUSTOMER DRAWING			SCALE 4:1	SHEET 1 OF 4
			REV A2	

4

3

2

1

THIS DRAWING IS UNPUBLISHED.

RELEASED FOR PUBLICATION

© COPYRIGHT BY TYCO ELECTRONICS CORPORATION. ALL RIGHTS RESERVED.

LOC	DIST	REVISIONS					
		P	LTR	DESCRIPTION	DATE	DWN	APVD
-	-						

NOTE:

- MATERIAL:  
HOUSING: PBT WITH 30% GF, BLACK COLOR.  
CONTACTS: BRASS.  
SHELL: PHOSPHOR BRONZE.
- FINISH:  
CONTACTS:  $0.75\mu\text{m}$  [ $30\mu''$ ] MIN. GOLD PLATED ON CONTACT AREA,  
 $2.54\mu\text{m}$  [ $100\mu''$ ] MIN. BRIGHT-TIN ON SOLDER TAIL, WITH  
ENTIRE CONTACT UNDERPLATED  $1.27\mu\text{m}$  [ $50\mu''$ ] MIN. NICKEL.  
② SHELL:  $1.27\mu\text{m}$  [ $50\mu''$ ] MIN. BRIGHT-TIN PLATED OVER  $1.27\mu\text{m}$  [ $50\mu''$ ] MIN. NICKEL PLATED.
- WAVE SOLDER CAPABLE TO  $265^{\circ}\text{C}$  PER TE TEST SPEC.  
109-202, CONDITION B.

RECOMMENDED PCB LAYOUT  $t=1.6\text{mm}$

THIS DRAWING IS A CONTROLLED DOCUMENT.		DWN 15JAN2013 HOWELL WANG		
		CHK 15JAN2013 KOBBY ZHAO		
		APVD 15JAN2013 PETER YIN	NAME 1394_A RECEPTACLE R/A THRU HOLE TYPE	
DIMENSIONS: MM		TOLERANCES UNLESS OTHERWISE SPECIFIED:		PRODUCT SPEC
		0 PLC ± -		QUALIFICATION TEST REPORT
		1 PLC ± 0.3		SIZE
		2 PLC ± 0.2		CAGE CODE
		3 PLC ± 0.15		DRAWING NO
		4 PLC ± -		RESTRICTED TO
		ANGLES ± 3'		A3 - C-2232260
MATERIAL		FINISH		SCALE
				4:1
		WEIGHT		SHEET
				2 OF 4
		CUSTOMER DRAWING		REV
				A2

AMP 1470-19 REV 31MAR2000

Downloaded From [Onevac.com](http://Onevac.com)

4

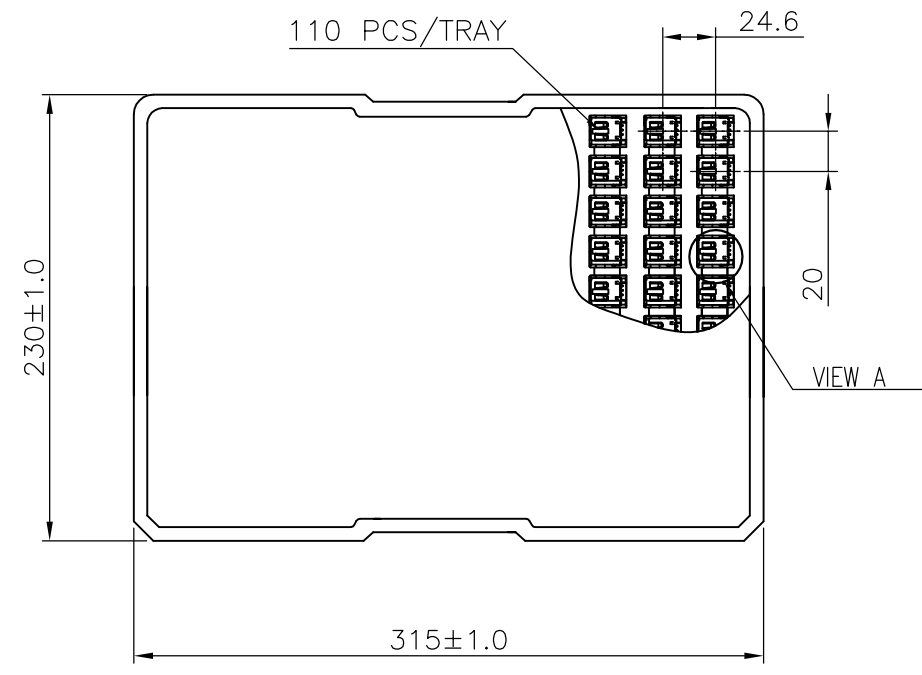
3

2

1

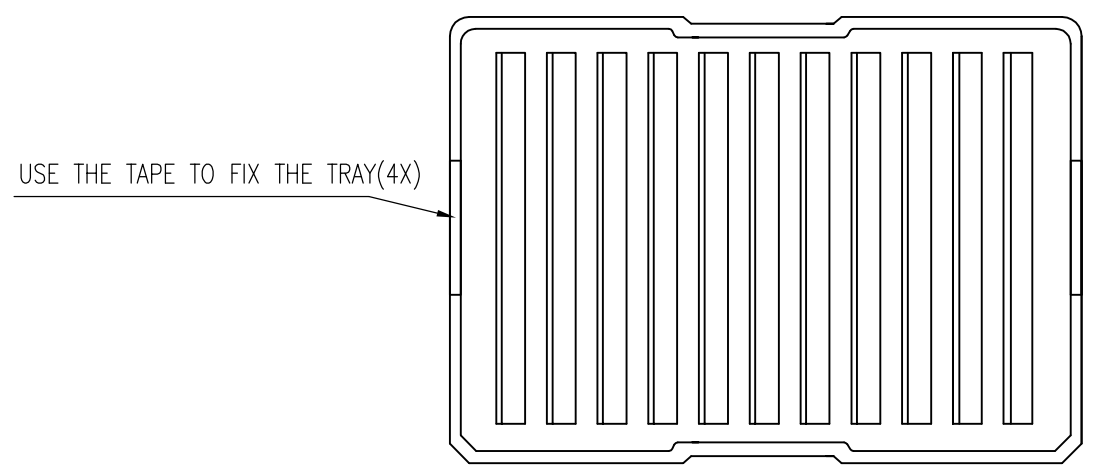
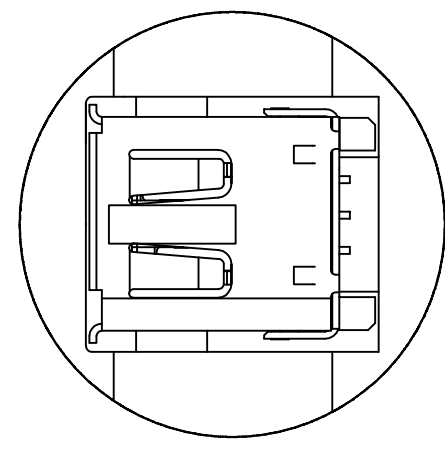
THIS DRAWING IS UNPUBLISHED. RELEASED FOR PUBLICATION  
 © COPYRIGHT BY TYCO ELECTRONICS CORPORATION. ALL RIGHTS RESERVED.

LOC	DIST	REVISIONS			
P	LTR	DESCRIPTION	DATE	DWN	APVD
-	-				



NOTE:

- 1. PACKAGING MATERIAL IN PLASTIC, RUBBER, INK, PIGMENT AND PAINT MUST MEET CONTROLLED SUBSTANCES SPEC PER 230-702.
- \* CADMIUM AND CADMIUM COMPOUNDS NOT TO EXCEED: 5 PPM.
- \* LEAD, CADMIUM, CHROM VI AND MERCURY NOT TO EXCEED: 100 PPM (COMBINED).



THIS DRAWING IS A CONTROLLED DOCUMENT.		DWN 15JAN2013 HOWELL WANG	TE Connectivity	
DIMENSIONS: MM		CHK 15JAN2013 KOBBY ZHAO		
		APVD 15JAN2013 PETER YIN	NAME 1394_A RECEPTACLE R/A THRU HOLE TYPE	
TOLERANCES UNLESS OTHERWISE SPECIFIED:		PRODUCT SPEC	-	
0 PLC ± -		QUALIFICATION TEST REPORT	-	
1 PLC ± 0.3		WEIGHT	-	
2 PLC ± 0.2		SIZE	A3	RESTRICTED TO
3 PLC ± 0.15		CAGE CODE	-	-
4 PLC ± -		DRAWING NO	C=2232260	
ANGLES ± 3'		SCALE	4:1	SHEET 3 OF 4
MATERIAL	FINISH	CUSTOMER DRAWING		REV A2

THIS DRAWING IS UNPUBLISHED.

RELEASED FOR PUBLICATION

LOC DIST

REVISIONS

©

COPYRIGHT BY TYCO ELECTRONICS CORPORATION. ALL RIGHTS RESERVED.

P	LTR	DESCRIPTION	DATE	DWN	APVD

D

D

C

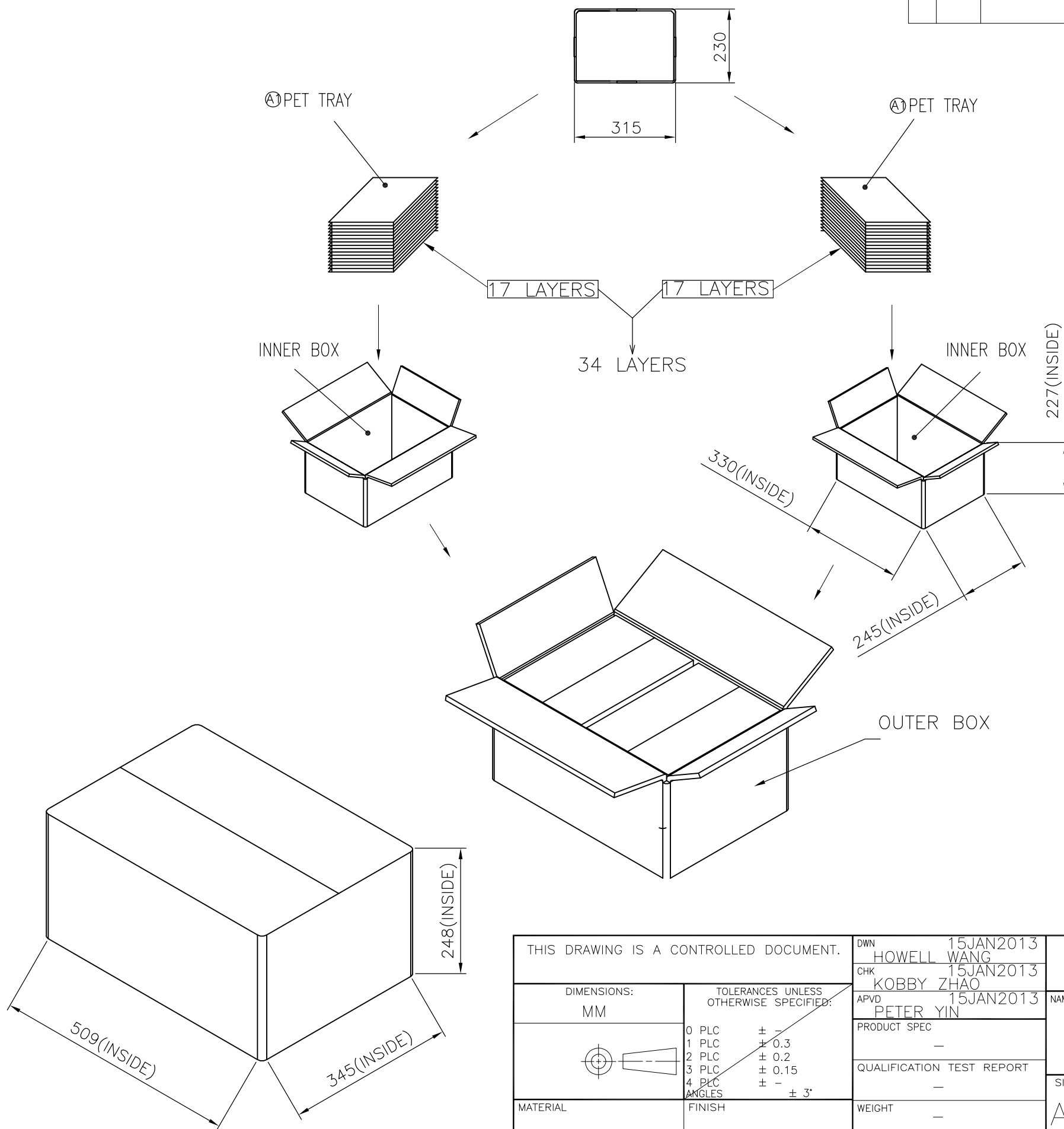
C


B

B

A

A



THIS DRAWING IS A CONTROLLED DOCUMENT.		DWN	15JAN2013	 TE Connectivity	
DIMENSIONS: MM		CHK	15JAN2013		
TOLERANCES UNLESS OTHERWISE SPECIFIED:		APVD	15JAN2013		
0 PLC ± - 1 PLC ± 0.3 2 PLC ± 0.2 3 PLC ± 0.15 4 PLC ± - ANGLES ± 3'		NAME		1394_A RECEPTACLE R/A THRU HOLE TYPE	
MATERIAL		PRODUCT SPEC		SIZE	RESTRICTED TO
FINISH		QUALIFICATION TEST REPORT		A3	-
-		WEIGHT		CAGE CODE	DRAWING NO
-		CUSTOMER DRAWING		-	©-2232260
-		SCALE		SHEET	REV
-		4:1		4 OF 4	A2

单击下面可查看定价，库存，交付和生命周期等信息

[>>TE Connectivity\(泰科\)](#)