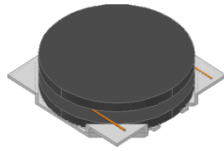


# CMI-DCP3012NH-SERIES

■ Picture



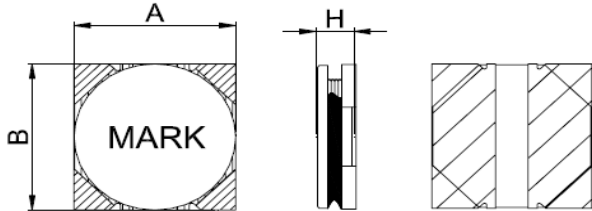
■ Features

- Small and Low profile inductor.
- It corresponds to High current.
- Simple and Shield structure.
- Available tape and reel for auto insertion.

■ Applications

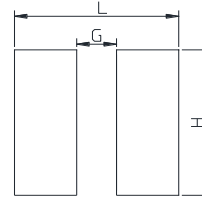
- For small DC/DC converter(cellular Phone, LCD/LED/OLED display, HDD, DSC etc).

■ Dimensions (Unit:mm)



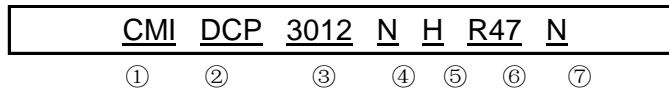
SERIES	A(mm)	B(mm)	H(mm)Max
DCP3012NH	3.0±0.2	3.0±0.2	1.2

■ Recommended Land Pattern



L(mm)	G(mm)	H(mm)
3.2	0.7	3.2

■ Regulation of Part number



- |   |   |
|---|---|
| ① CoilMaster Inductor<br>② Series Code<br>③ Dimension(unit : mm) : 3.0x3.0x1.2<br>④ Core Material | ⑤ Halogen Free & Lead Free<br>⑥ Typical Inductance Value : R47=0.47μH<br>⑦ Tolerance : M=±20%, N=±30% |
|---|---|

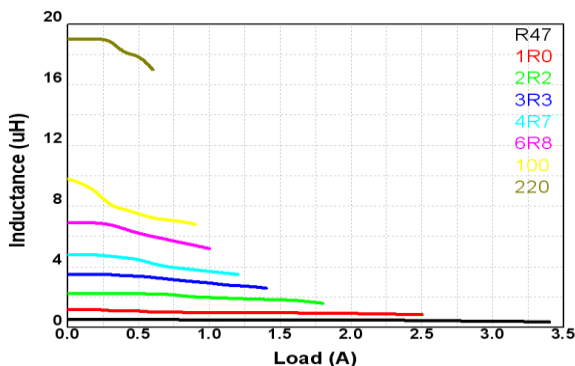
■ Specifications

Part Number	Inductance (uH)	Tolerance (±)	DCR (mΩ)±20%	Idc1(A) <sup>※1</sup>	Idc2(A) <sup>※2</sup>	Test Frequency (Hz)
CMI-DCP3012NH-R47N	0.47	30%	33	3.40	3.50	1M
CMI-DCP3012NH-1R0N	1.0	30%	43	2.50	2.60	1M
CMI-DCP3012NH-2R2M	2.2	20%	83	1.80	1.90	1M
CMI-DCP3012NH-3R3M	3.3	20%	126	1.40	1.50	1M
CMI-DCP3012NH-4R7M	4.7	20%	155	1.20	1.30	1M
CMI-DCP3012NH-6R8M	6.8	20%	260	0.98	0.97	1M
CMI-DCP3012NH-100M	10	20%	350	0.84	0.85	1M
CMI-DCP3012NH-220M	20	20%	740	0.55	0.56	1M

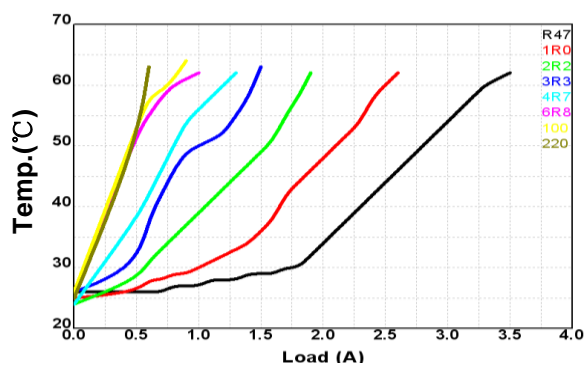
※1:The saturation current(Idc1) is the DC current value having inductance decrease down to 30%.

※2:The Temperature rise current value(Idc2) is the DC current value having temperature increase up to 40°C

■ IDC1



■ IDC2



[www.coilmaster.com](http://www.coilmaster.com)

单击下面可查看定价，库存，交付和生命周期等信息

[>>coilmaster\(卡尔马斯特\)](#)