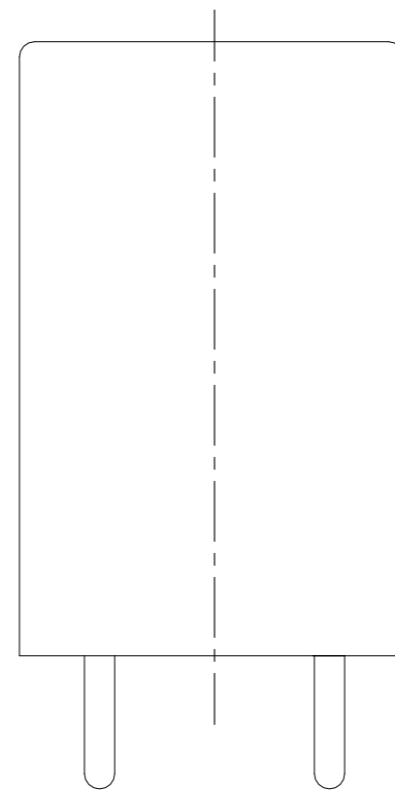
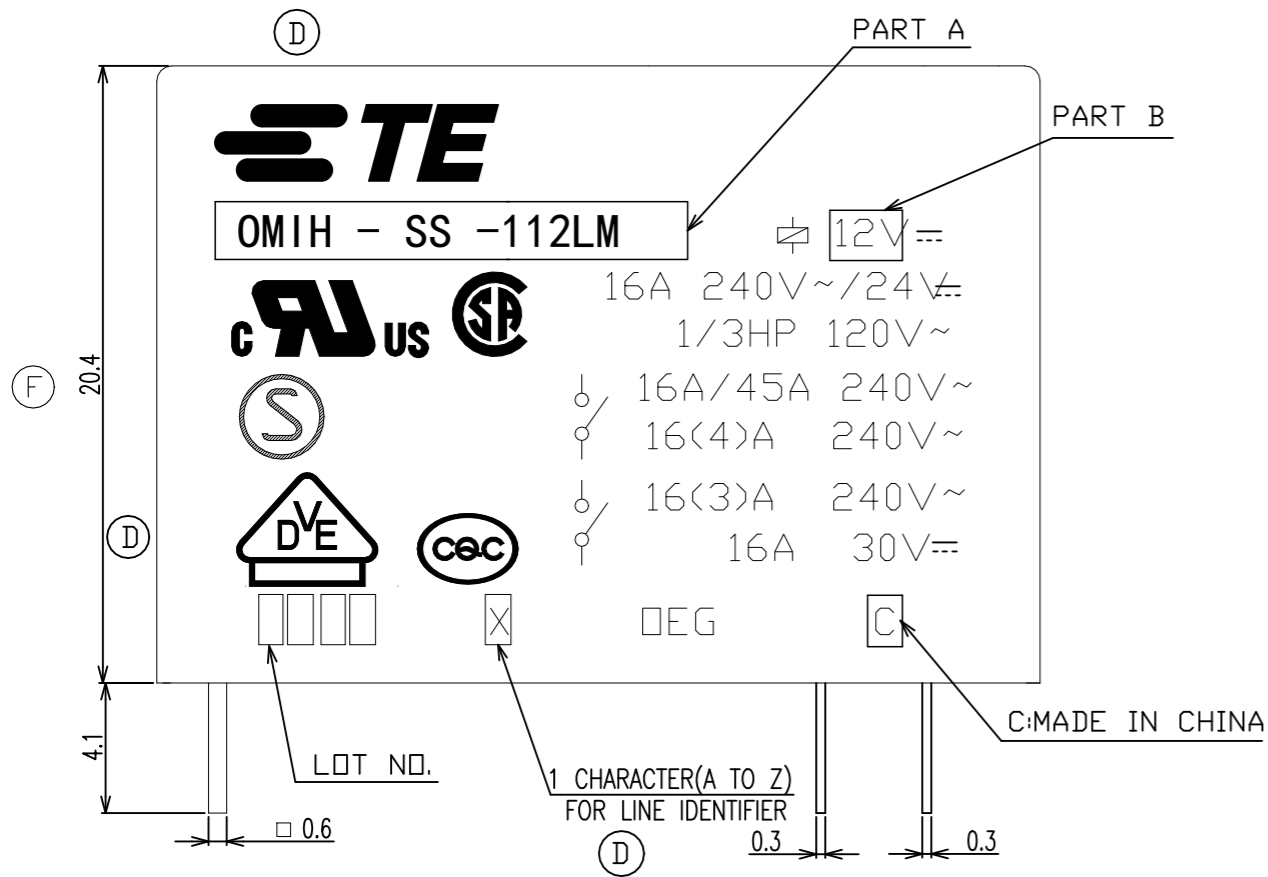
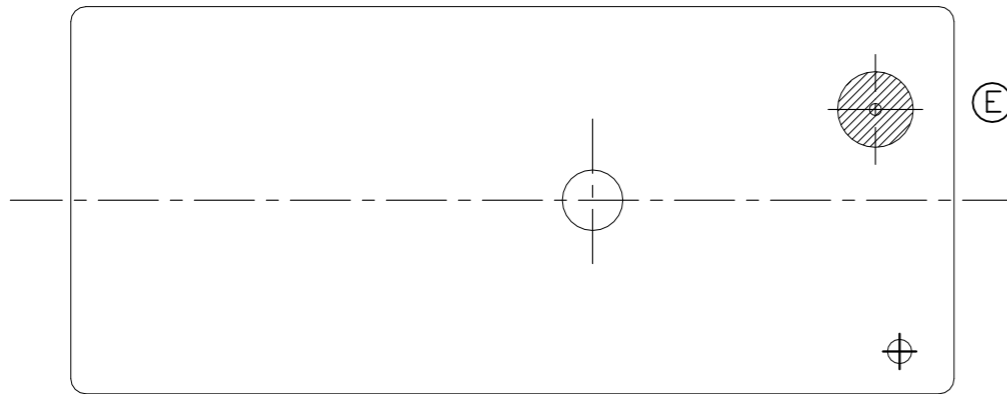


REVISIONS

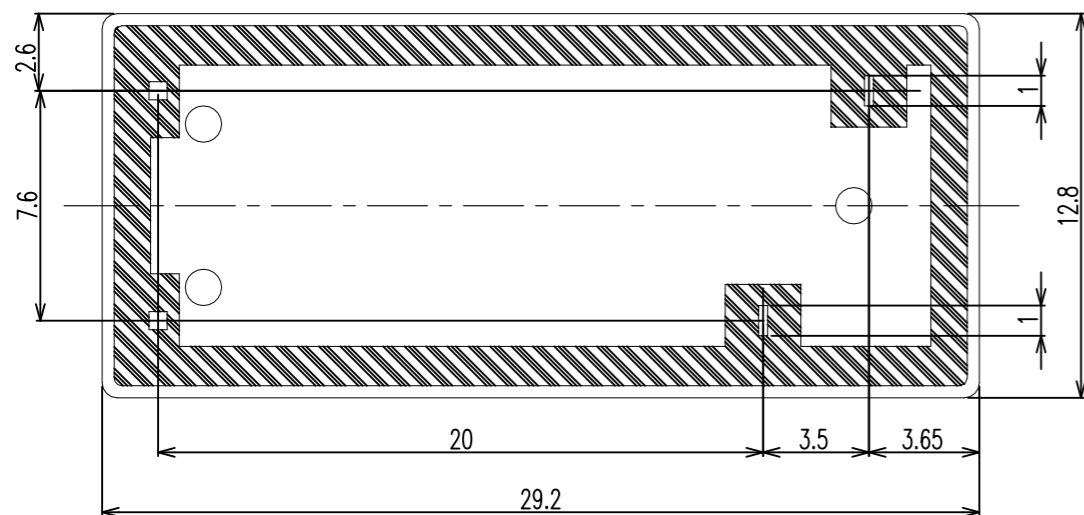
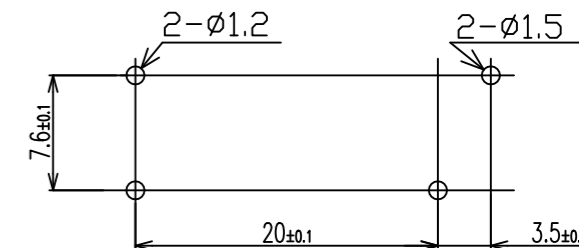
P	LTR	DESCRIPTION	DATE	DWN	APVD
	F	BASE MATERIAL CHANGE TO PBT, DIMENSION CHANGE ECN-21-107984	28-JUN-21	XR.L	K.T



CONNECTION DIAGRAM (BOTTOM VIEW)



DRILLING DIAGRAM(2/1) (BOTTOM VIEW)



THIS DRAWING IS A CONTROLLED DOCUMENT.		DWN Y.Xiao	TE Connectivity Ltd.		
DIMENSIONS: mm		CHK N.Funayama			
TOLERANCES UNLESS OTHERWISE SPECIFIED:		APVD CH.HSU	OMIH(1M) SPEC300 CUSTOMER DRAWING		
		PRODUCT SPEC	APPLICATION SPEC		
0 PLC ± - 1 PLC ± - 2 PLC ± - 3 PLC ± - 4 PLC ± - ANGLES ± -		FINISH	SIZE	CAGE CODE	DRAWING NO
MATERIAL		WEIGHT	A3	00779	C-2-1419153-1
		CUSTOMER DRAWING		SCALE	SHEET
				4:1	1 OF 2
				REV	F

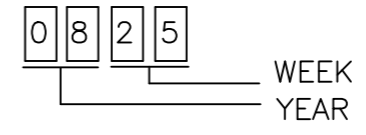
REVISIONS				
P	LTR	DESCRIPTION	DATE	APVD

OMIH-SH-124DM	7-1440000-3	OMIH-SH-124DM	24V
OMIH-SH-112LM	1461009-1	OMIH-SH-112LM	12V
OMIH-SH-112DM	1461022-1	OMIH-SH-112DM	12V
OMIH-SS-106DM	1461022-9	OMIH-SS-106DM	6V
OMIH-SS-105DM	1461022-5	OMIH-SS-105DM	5V
OMIH-SS-148LM	9-1419121-2	OMIH-SS-148LM	48V
OMIH-SS-148LM	2-1419145-2	OMIH-SS-148LM	48V
OMIH-SS-148LM	9-1440000-4	OMIH-SS-148LM	48V
OMIH-SS-148DM	9-1440000-2	OMIH-SS-148DM	48V
OMIH-SS-124LM	2-1419153-2	OMIH-SS-124LM	24V
OMIH-SS-124DM	8-1440000-9	OMIH-SS-124DM	24V
OMIH-SS-118DM	8-1440000-7	OMIH-SS-118DM	18V
OMIH-SS-112LM	8-1440000-6	OMIH-SS-112LM	12V
OMIH-SS-112DM	8-1440000-4	OMIH-SS-112DM	12V
OMIH-SS-109LM	8-1440000-2	OMIH-SS-109LM	9V
OMIH-SS-109DM	8-1440000-0	OMIH-SS-109DM	9V
OMIH-SS-106LM	7-1440000-9	OMIH-SS-106LM	6V
OMIH-SS-105LM	2-1419153-1	OMIH-SS-105LM	5V
EC TYPE NAME	PART NO	PART A	PART B

RELAY TYPE

NOTES:

1.LOT NO. SYSTEM AS FOLLOWING:



2.GENERAL TOLERANCE AS FOLLOWING:

TOLERANCE	
0~0.99mm	±0.1
1mm~2.99mm	±0.2
3mm~MIN.	±0.3

(D)

3.TERMINAL DIMENSION IS NOT INCLUDING SOLDER TIP.
 FOR THE TIN-PLATING OF THE PINS:
 +0.1mm FOR WIDTH,THICKNESS AND DIAMETER.
 +0.5mm FOR LENGTH.

		UV RESIN	UV SEAL	16
		EPOXY RESIN	SEAL	15
UL94 V-0		PBT	CASE	14
CLASS E		UEW	MAGNETIC WIRE	13
UL94 V-0		PBT (F)	BASE	12
UL94 V-0		PBT	BOBBIN	11
	SOLDER DIP	CP WIRE	COIL TERMINAL	10
UL94 V-0		PPS	CARD	9
		Ag ALLOY	MOVABLE CONTACT	8
		Ag ALLOY	STATIONARY CONTACT	7
		Cu ALLOY	HINGE SPRING	6
	SOLDER DIP	Cu ALLOY	STATIONARY TERMINAL	5
	SOLDER DIP	Cu ALLOY	MOVABLE SPRING	4
		STEEL	CORE	3
		STEEL	ARMATURE	2
		STEEL	YOKE	1
INCOMBUSTIBILITY	TREATMENT	MATERIAL	DESCRIPTION	ITEM

THIS DRAWING IS A CONTROLLED DOCUMENT.		DWN Y.Xiao	TE Connectivity Ltd.	
DIMENSIONS: mm		CHK N.Funayama		
TOLERANCES UNLESS OTHERWISE SPECIFIED:		APVD CH.HSU	NAME	
0 PLC ± -		PRODUCT SPEC	OMIH(1M) SPEC300 CUSTOMER DRAWING	
1 PLC ± -		APPLICATION SPEC	SIZE CAGE CODE DRAWING NO RESTRICTED TO	
2 PLC ± -			A3 00779 C-2-1419153-1	
3 PLC ± -			SCALE 4:1 SHEET 2 OF 2 REV F	
4 PLC ± -				
ANGLES ± -		WEIGHT		
MATERIAL		FINISH	CUSTOMER DRAWING	

单击下面可查看定价，库存，交付和生命周期等信息

[>>TE Connectivity\(泰科\)](#)