

THIS DRAWING IS UNPUBLISHED.

RELEASED FOR PUBLICATION

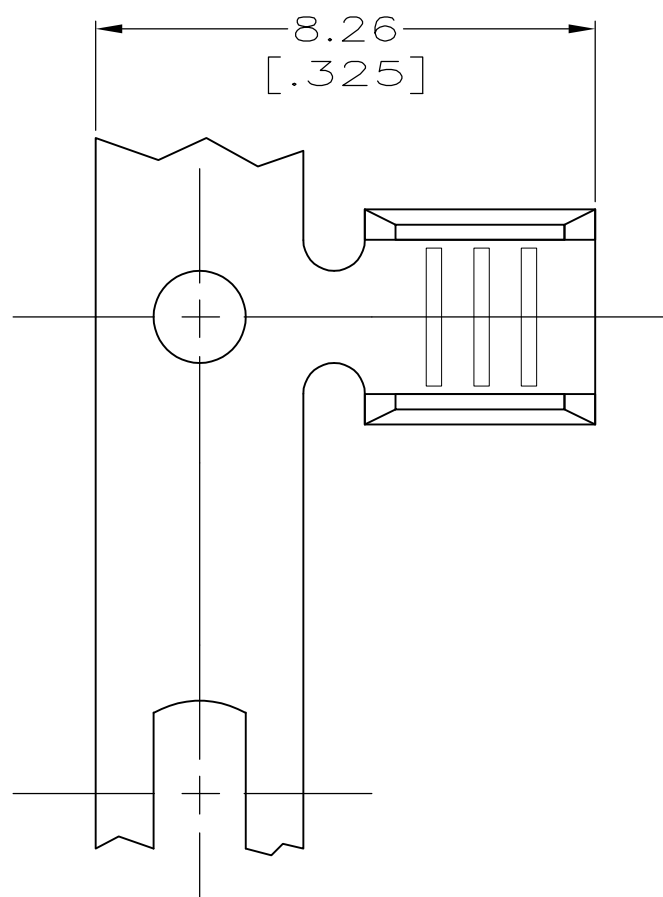
ALL RIGHTS RESERVED.

© COPYRIGHT - By -

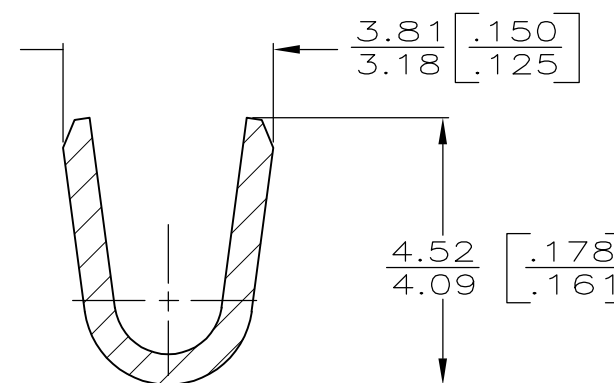
| LOC | DIST | REVISIONS | | | |
|-----|------|-------------|---------------------------|---------|-------|
| P | LTR | DESCRIPTION | DATE | DWN | APVD |
| AF | 50 | L4 | REVISED PER ECO-15-011479 | 06AUG15 | JR MD |

6 OBSOLETE PARTS: OBSOLETE CIS STREAMLINING PER D.RENAUD/D.SINISI

7 CUSTOMER SPECIAL PACKAGING AND LABELING



- 1 PRODUCT PROVIDED IN STRIP FORM ON REELS, BREAKS MAY BE PRESENT.
- 3 CRIMP WIDTH, .110 F TYPE
CRIMP HEIGHT (±.002) = (TOTAL CMA + 11,300) / 176,700
- 4 PRELIMINARY - NOT FOR PRODUCTION.
- 5 WIRE RANGE FOR NEW APPLICATIONS: 1500-5000 CMA (WIRE RANGE APPROVED FOR APPLICATIONS IMPLEMENTED PRIOR TO 2005: 1970-4940 CMA).



| MATERIAL | FINISH | REELING | WIRE RANGE | PART NUMBER |
|---------------|--------|----------|------------|-------------|
| BRASS | TIN | REVERSE | - | 63130-9 |
| STEEL | NICKEL | | | 63130-8 |
| COPPER-NICKEL | NONE | - | - | 63130-7 |
| PHOS BRONZE | TIN | | | 63130-4 |
| BRASS | NONE | STANDARD | - | 63130-3 |
| OBSOLETE | | | | 63130-2 |
| | | | | 63130-1 |

0.508±0.025 [.020±.001]

THIS DRAWING IS A CONTROLLED DOCUMENT.

DWN: PHILLIP M FORTNEY 17/JAN/96
CHK: JEFF R RUTH 17/JAN/96
APVD: DENNIS SCHWENK 17/JAN/96

STE TE Connectivity

NAME: SPLICE

PRODUCT SPEC: -
APPLICATION SPEC: 114-2088

SIZE: A3 CAGE CODE: 00779 DRAWING NO: C-63130 RESTRICTED TO: -

MATERIAL: SEE TABLE FINISH: SEE TABLE WEIGHT: -

CUSTOMER DRAWING SCALE: 8:1 SHEET: 1 OF 1 REV: L4

单击下面可查看定价，库存，交付和生命周期等信息

[>>TE Connectivity\(泰科\)](#)