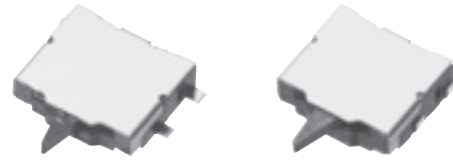


ESE23 Detector Switches

Type: **ESE23**



Bidirectional operation, midpoint auto-return Type

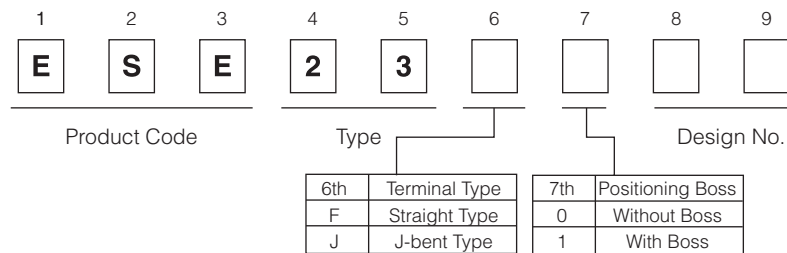
■ Features

- External dimensions : 4.1 mm×5.0 mm, Height 1.5 mm
- Long over-travel (through-operation available)
- Usable as an operation switch (an input device)

■ Recommended Applications

- Detection of media in portable electronic equipment (CD-ROM, DVD, Digital still cameras, etc.)
- Operating switches for other electronic equipment.

■ Explanation of Part Numbers

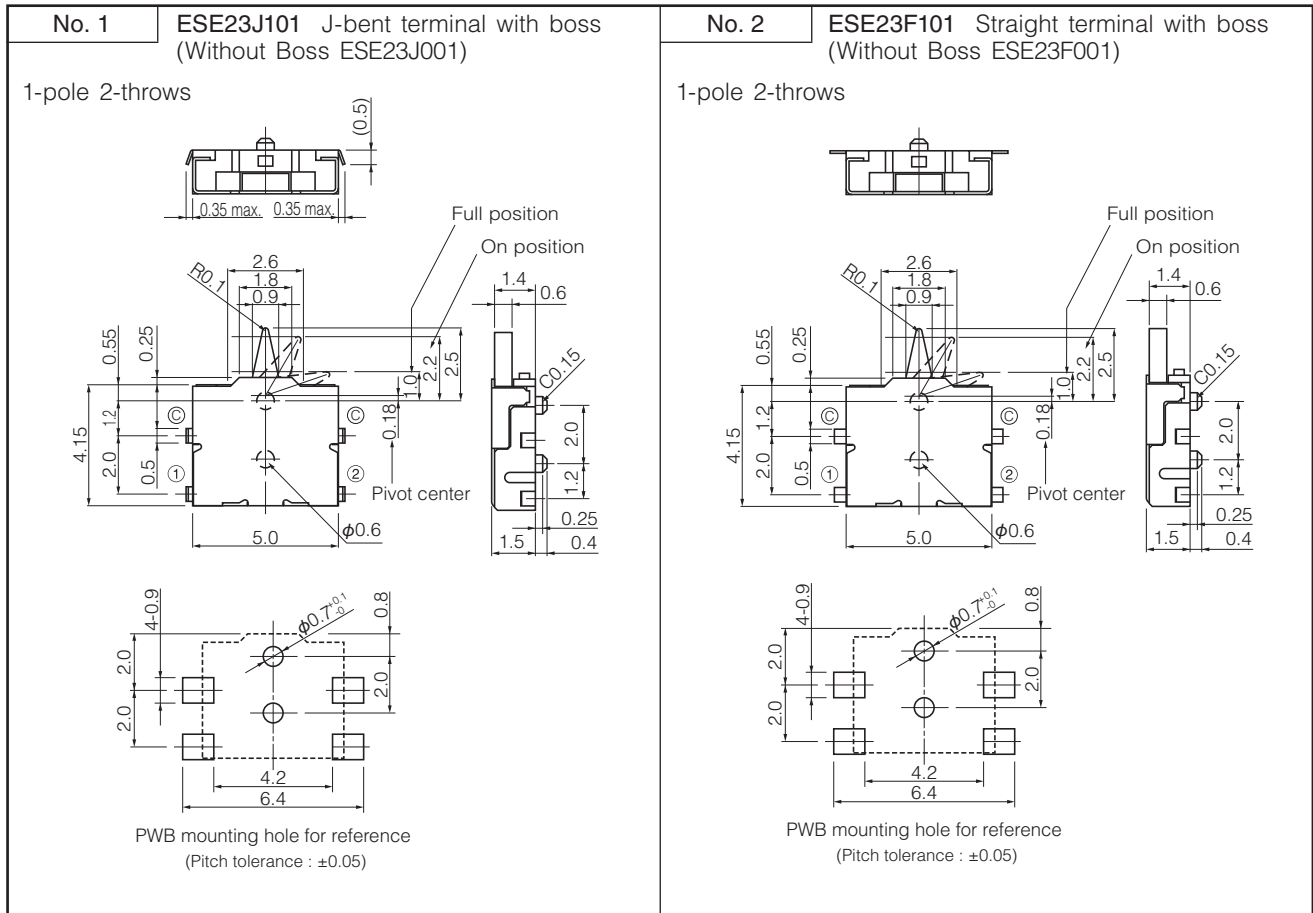


■ Specifications

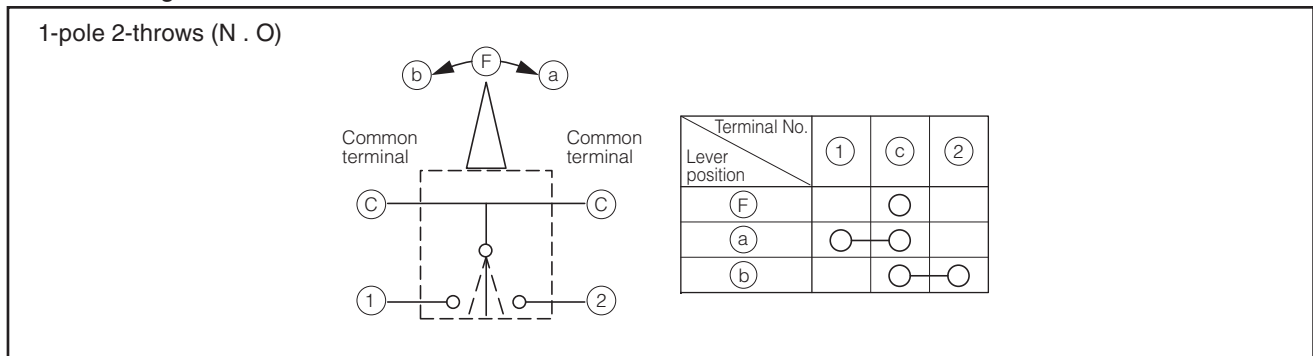
Rating	50 μ A 3 V DC to 10 mA 5 V DC (Resistive load)
Contact Resistance	500 m Ω max. (Initial)
Insulation Resistance	100 M Ω min. (at 100 V DC for 1 minute)
Dielectric Withstanding Voltage	100 V AC (50 Hz or 60 Hz) for 1 minute
Operating Force	300 mN max.
Mounting Height	1.5 mm
Poles and Throws	1-pole 2-throws (OFF at midpoint)
Full Travel (Pushing distance)	With Boss 1.0 mm (1.5 mm) Without Boss 2.2 mm (1.5 mm)
Operating Life	50,000 cycles min.
Temperature Range	-10 $^{\circ}$ C to +60 $^{\circ}$ C (Standard), -40 $^{\circ}$ C to +85 $^{\circ}$ C (Automotive)
Heat Resistance	+70 $^{\circ}$ C for 96 hours
Low Temperature Resistance	-25 $^{\circ}$ C for 96 hours
Humidity Resistance	+40 $^{\circ}$ C 90 % to 95 % RH for 96 hours
Minimum Quantity/Packing Unit	4,000 pcs. Embossed Taping (Reel Pack)
Quantity/Carton	24,000 pcs.

Design and specifications are each subject to change without notice. Ask factory for the current technical specifications before purchase and/or use. Should a safety concern arise regarding this product, please be sure to contact us immediately.

■ Dimensions in mm (not to scale)

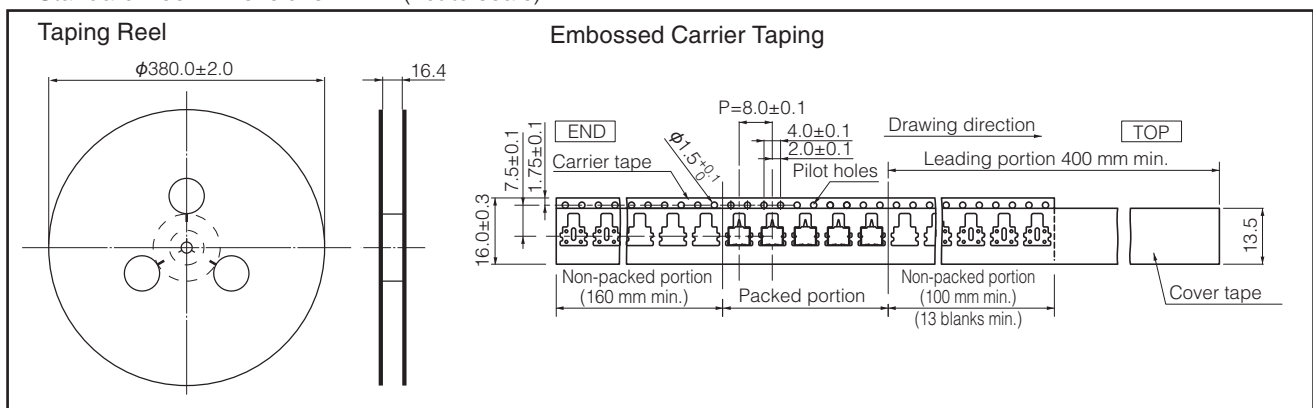


■ Circuit Diagram



■ Packaging Specifications

Standard Reel Dimensions in mm (not to scale)



Design and specifications are each subject to change without notice. Ask factory for the current technical specifications before purchase and/or use.
Should a safety concern arise regarding this product, please be sure to contact us immediately.

单击下面可查看定价，库存，交付和生命周期等信息

[>>Panasonic\(松下\)](#)