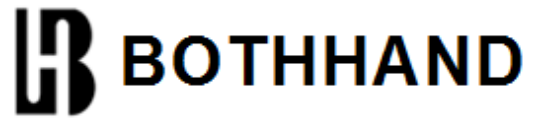
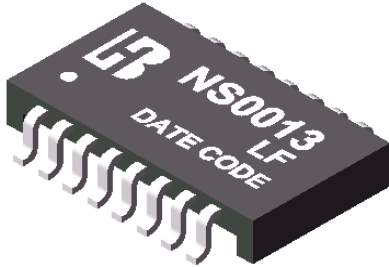


NS0013 LF
SMD 10/100 BASE-T Single Port PC
CARD Discrete LAN Magnetics



Feature

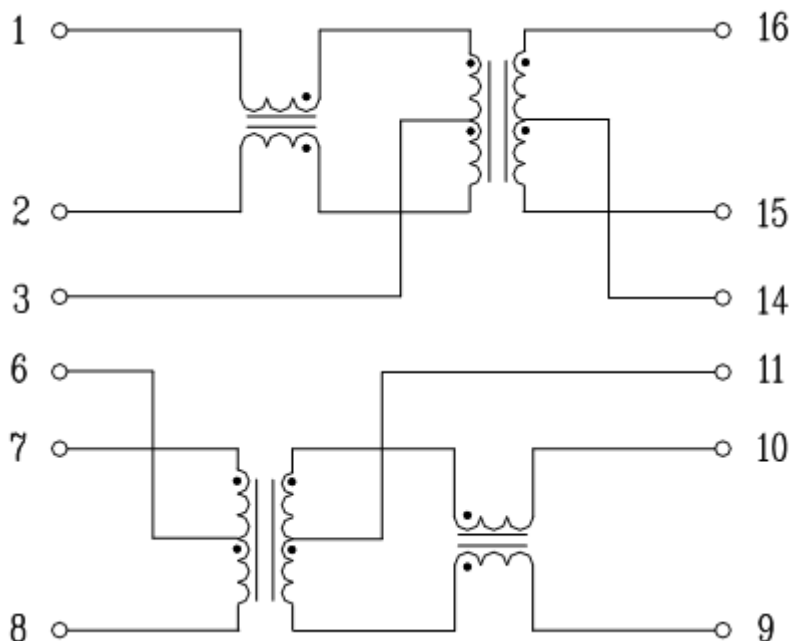


- Half port and single port designs for maximum layout flexibility.
- Low profile packages from 0.094 Inch(2.39mm) to 0.078 Inch(1.98mm) for PC card and card bus applications .
- Complying with ROHS & Halogen Free requirements.
- Operating temperature range: 0°C to +70°C .
- Storage temperature range: -25°C to +85°C .

Electrical Specifications @ 25°C							
Part Number	Turns Ratio (±3%)		OCL (uH Min) @100KHz/0.1V Pin(16-15/7-8)	Cw/w (pF Max)	L.L (uH Max)	DCR (Ω Max)	HI-POT
	TX	RX				Pin(16-15/7-8)	
NS0013 LF	1CT:1CT	1CT:1CT	350	15	0.4	0.9	AC1500V/1mA

Continue								
Part Number	Insertion Loss (dB Max)	Return Loss (dB Min)				Cross talk (dB Min)	DCMR (dB Min)	
		0.3-30MHz	40MHz	50MHz	60-80MHz		0.3-100MHz	0.3-60MHz
NS0013 LF	-1.1	-18	-15.5	-13.5	-10	-38	-33	-26

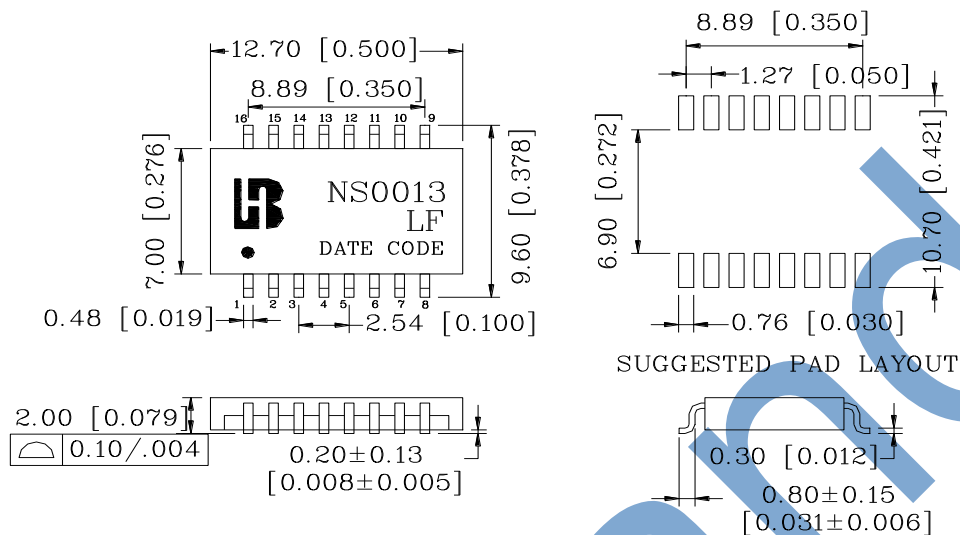
Schematic



NS0013 LF
SMD 10/100 BASE-T Single Port PC
CARD Discrete LAN Magnetics

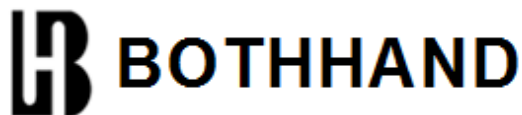


Mechanical

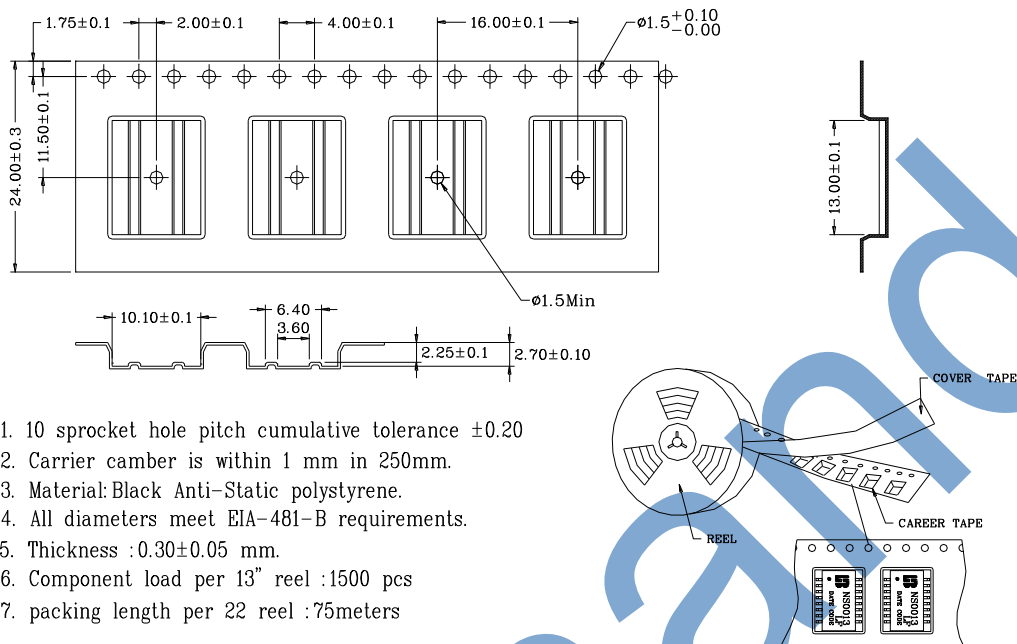


Units: mm[Inches] Tolerances: xx.xx±0.25[0.010]
 0.xx±0.05[0.002]

NS0013 LF
SMD 10/100 BASE-T Single Port PC
CARD Discrete LAN Magnetics

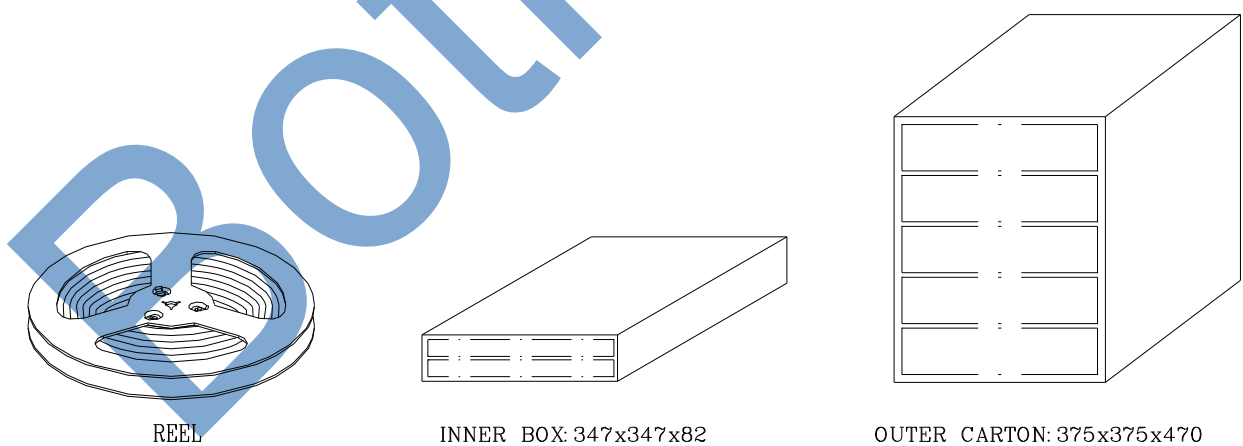


REEL PACKAGE



1. 10 sprocket hole pitch cumulative tolerance ± 0.20
2. Carrier camber is within 1 mm in 250mm.
3. Material: Black Anti-Static polystyrene.
4. All diameters meet EIA-481-B requirements.
5. Thickness : 0.30 ± 0.05 mm.
6. Component load per 13" reel : 1500 pcs
7. packing length per 22 reel : 75meters

CARTON PACKAGE



1. 1 Reel=1500PCS
2. 1 INNER BOX=2 Reel=3000PCS
3. 1 OUTER CARTON=5 INNER BOX=5x3000=15000PCS

单击下面可查看定价，库存，交付和生命周期等信息

[>>Bothhand\(帛汉\(帛漠\)\)](#)