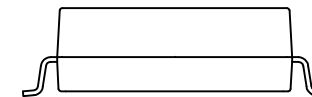
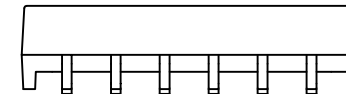
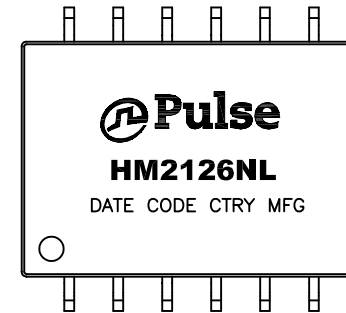




NOTES:

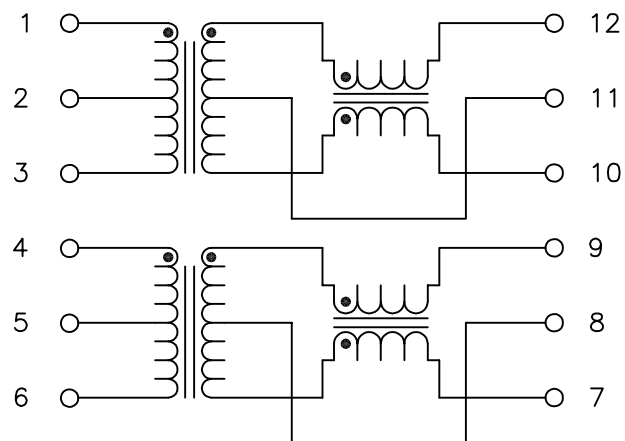
1. ROHS COMPLIANT
2. STORAGE TEMPERATURE: -50°C TO +125°C
3. COMPLIANCE TO J-STD:
 - A. J-STD-002: SOLDERABILITY AT 245°C REFLOW PROFILE
 - B. J-STD-020: LEVEL 1, NO MOISTURE SENSITIVE
 - C. J-STD-075: R7, 245°C MAXIMUM THROUGH REFLOW SOLDER
4. TO ORDER TAPE & REEL PACKAGING ADD A "T" SUFFIX TO THE PART NUMBER(i.e HXXXXXXXXNL BECOMES HXXXXXXXXNLT).
5. MEETS AEC-Q200 REQUIREMENTS



FINAL OUTLINE

© Copyright, 2017. Pulse Electronics Corp. All rights reserved. Pulse confidential & proprietary. (12/13/17)

PRODUCT DESCRIPTION	TLA DRAWING	PS DRAWING	SHEET	PART NO.	DATASHEET REV.
XFMR/CMC,DUAL,4.3kV,1:1,SMT,TU	HM2126NL-P1	PS-0023.002-D	1 OF 3	HM2126NL	C



SCHEMATIC

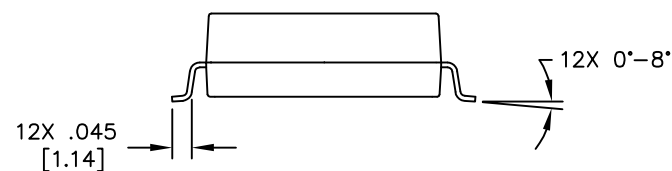
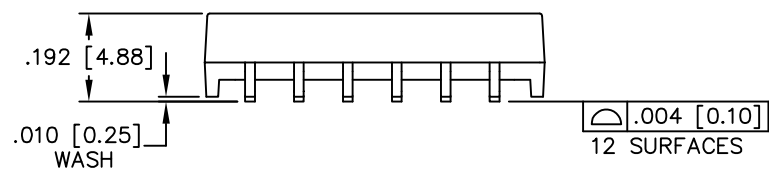
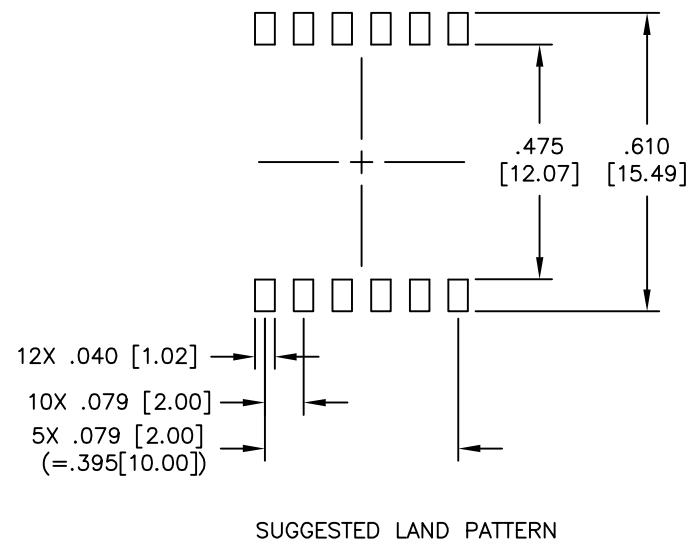
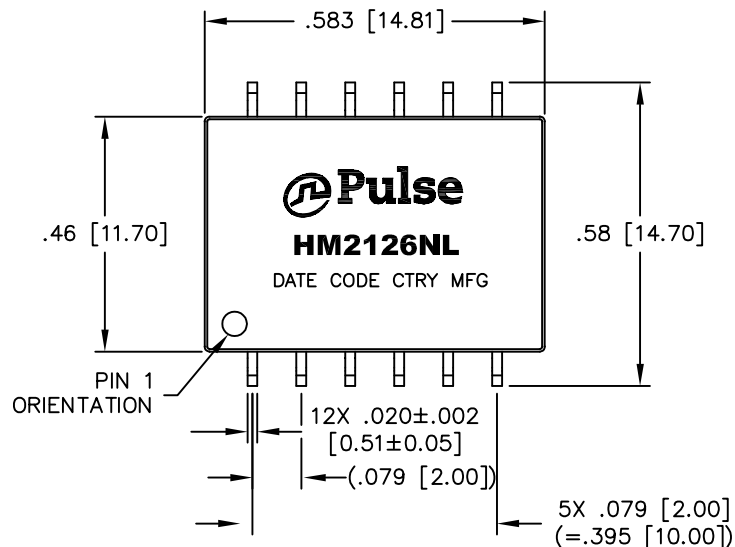
ELECTRICAL CHARACTERISTICS AT +25°C UNLESS OTHERWISE SPECIFIED
(FOR REFERENCE ONLY. USED FOR CUSTOMER INFORMATION.)

PARAMETER	SPECIFICATIONS
QUALIFICATION	AEC-Q200 (PENDING)
OPERATING TEMP	-40°C TO +125°C
TURNS RATIO	1 : 1 ±2%
POLARITY	PER SCHEMATIC
▽ LL	AT 100 KHz, 1 VRMS (1-3) = 0.5 uH MAXIMUM, SHORT (12-11-10) (4-6) = 0.5 uH MAXIMUM, SHORT (9-8-7)
INDUCTANCE (OCL) AT 100 kHz, 100 mV (-40°C TO +125°C)	300 uH MIN
DCR	(12-11) = (11-10) = (9-8) = (8-7) = 0.5 OHMS MAX
	(1-2) = (2-3) = (4-5) = (5-6) = 0.4 OHMS MAX
▽ INPUT - OUTPUT ISOLATION	4300 VDC FOR 60 SECONDS
WORKING VOLTAGE	1000 VDC

NOTE: "▽" IS SPECIAL CHARACTERISTIC.

© Copyright, 2017. Pulse Electronics Corp. All rights reserved. Pulse confidential & proprietary. (12/13/17)

PRODUCT DESCRIPTION	TLA DRAWING	PS DRAWING	SHEET	PART NO.	DATASHEET REV.
XFMR/CMC,DUAL,4.3kV,1:1,SMT,TU	HM2126NL-P1	PS-0023.002-D	2 OF 3	HM2126NL	C



DIMENSIONS ARE IN INCHES [MILLIMETERS] WITH THE FOLLOWING TOLERANCES: [MILLIMETERS] ARE FOR REFERENCE ONLY.
.XX= ±.01 [±0.25]
.XXX= ±.005 [±0.13]

© Copyright, 2017. Pulse Electronics Corp. All rights reserved. Pulse confidential & proprietary. (12/13/17)

PRODUCT DESCRIPTION	TLA DRAWING	PS DRAWING	SHEET	PART NO.	DATASHEET REV.
XFMR/CMC,DUAL,4.3kV,1:1,SMT,TU	HM2126NL-P1	PS-0023.002-D	3 OF 3	HM2126NL	C

单击下面可查看定价，库存，交付和生命周期等信息

[>>Pulse Electronics\(普思\)](#)