

THIS DRAWING IS UNPUBLISHED.

RELEASED FOR PUBLICATION

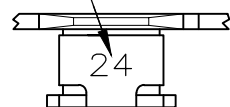
ALL RIGHTS RESERVED.

© COPYRIGHT - By -

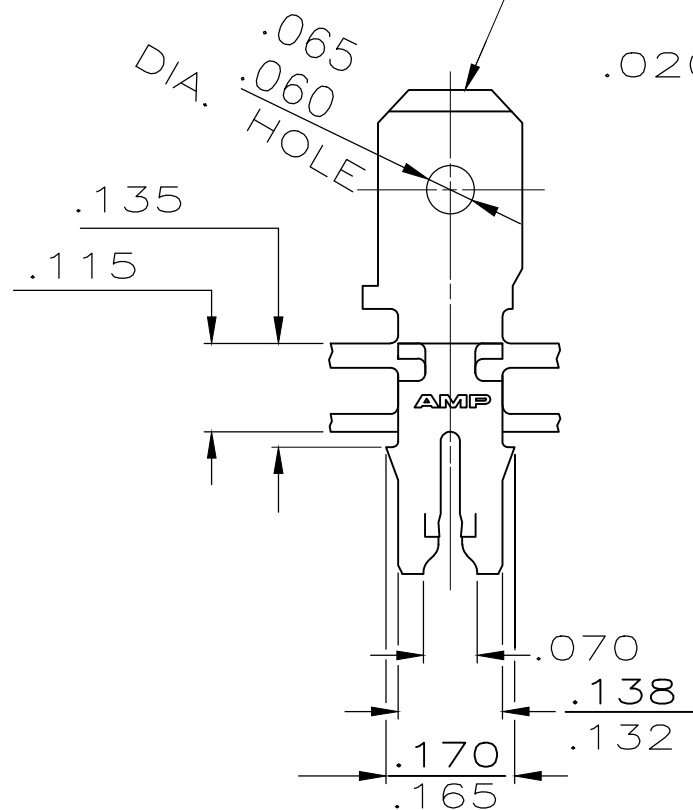
REVISIONS

P	LTR	DESCRIPTION	DATE	DWN	APVD
	A1	RELEASE PER ECR-18-013115	17AUG2018	JH	PKS

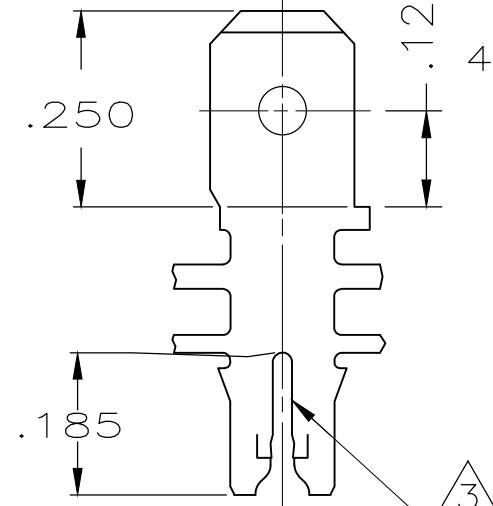
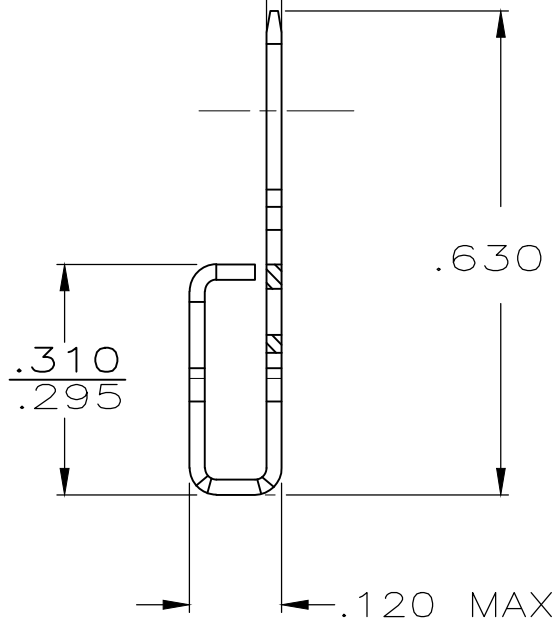
IDENTIFICATION NUMBER 24 FOR MAGNET WIRE RANGE.



FITS .187 SERIES FASTON RECEPTACLE



.020 ±.001



- ① MAG-MATE CAVITY SPECIFICATION.
- 2 CONTINUOUS STRIP ON REELS WITH TERMINALS LOCATED ON .220 CENTERS.
- ③ SLOT ACCEPTS #19-#17[0.91mm-1.15mm] COPPER MAGNET WIRE..
SLOT ACCEPTS #18.5-#17[0.95mm-1.15mm] ALUMINUM MAGNET WIRE.
ALUMINUM WIRE RANGE APPLIES FOR POST-TIN PLATED VERSIONS ONLY.
- 4 AFTER INSERTION INTO PLASTIC HOLDER TAB PORTION MUST BE BENT OVER 45 TO 90 ° OR POTTED TO PREVENT PULL-OUT WHEN MATING RECEPTACLE IS DISCONNECTED.

2328510-1 PN

THIS DRAWING IS A CONTROLLED DOCUMENT.		DWN JUSTIN HUANG 24JAN2018	TE Connectivity Ltd.		
DIMENSIONS: INCHES		CHK TIM DING 24JAN2018			
TOLERANCES UNLESS OTHERWISE SPECIFIED:		APVD 24JAN2018	PRODUCT SPEC 108-2012		
0 PLC ± - 1 PLC ± - 2 PLC ± - 3 PLC ± .010 4 PLC ± - ANGLES ± 1°		APPLICATION SPEC 114-2046 ①	SIZE A3	CAGE CODE 00779	DRAWING NO C-2328510
MATERIAL BRASS		FINISH TIN PLATED	WEIGHT 0	RESTRICTED TO -	
CUSTOMER DRAWING			SCALE 4:1	SHEET 1 OF 1	REV A1

单击下面可查看定价，库存，交付和生命周期等信息

[>>TE Connectivity\(泰科\)](#)