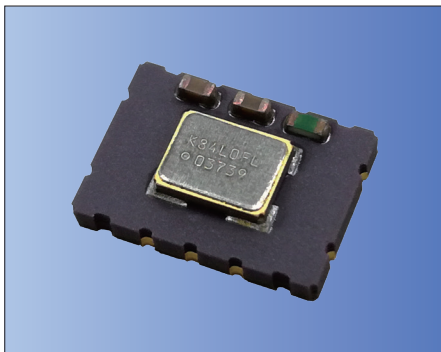




7.0x5.0mm



RoHS Compliant

Features

- High stability and high reliability
- 2.7 to 5.5V drive available
- Clipped sine wave or CMOS level output
- Low phase noise
- Disable Function (KT7050A)

Applications

- 5G, Smallcell, Stratum3
- SONET/ SDH/ Ethernet

How to Order

KT7050 □ 20000 □ A □ 33 T xx
① ② ③ ④ ⑤ ⑥ ⑦ ⑧ ⑨

① Series	② Land Type		
③ Output Frequency	A	10Pads	
④ Freq. Temp. Chrst.	B	4Pads	
⑤ Lower Operating Temp.	⑥ Upper Operating Temp.		
	④	⑤	⑥
KAW	$\pm 0.28 \times 10^{-6}$	-40°C	+85°C
KAY	$\pm 0.28 \times 10^{-6}$	-40°C	+105°C
AAV	$\pm 0.10 \times 10^{-6}$	-40°C	+105°C
⑦ Supply Voltage	⑧ Voltage Control Function		
33	3.3V	T	TCXO
		Spec. Code*	VCTCXO

*Please contact us for Spec. Code.

⑨ Individual Specification

Packaging (Tape & Reel 1000 pcs./ reel)

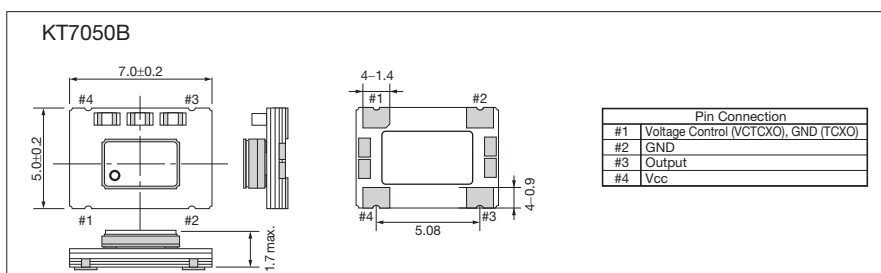
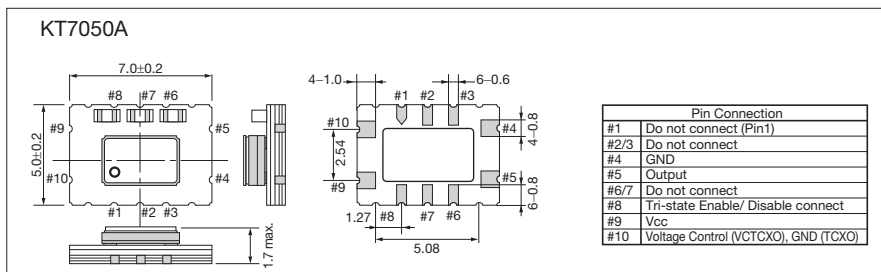
- Compliant to the GR1244-Core & GR253-Core
- Recommended in Microsemi's ZLAN-68 app. note for Stratum3 applications based on tests performed by Kyocera.

Specifications

Item	Symbol	Conditions	Min.	Max.	Units	
Output Frequency Range	fo	Standard Frequency: 10, 19.2, 20, 24.576, 26, 30.72, 38.88, 40	10	40	MHz	
Frequency Tolerance	f _{tol}	vs Temperature (-10 to +105°C) $[\pm(f_{max}-f_{min})/ 2f_0]$	-0.1	+0.1	$\times 10^{-6}$	
		vs Temperature (-40 to +85°C/ +105°C) $[\pm(f_{max}-f_{min})/ 2f_0]$	-0.28	+0.28		
		vs Voltage	-0.1	+0.1		
Supply Voltage	V _{CC}		+2.7	+5.5	V	
Current Consumption	I _{CC}	CMOS Output	—	6	mA	
Frequency Aging	f _{age}	20years aging @40°C Including temp characteristics, initial tolerance, rated power supply voltage change and load change.	-4.6	+4.6	$\times 10^{-6}$	
Voltage Control Range	f _{cont}	Positive *100k ohm min	± 5	± 20	$\times 10^{-6}$	
Output Level	V _{pp}	Clipped Sine, Load: 10k ohm // 10pF	0.8	—	V _{p-p}	
Low Level Output Voltage	V _{OL}	CMOS, Load: 15pF I _{OL} =4mA	—	10% V _{CC}	V	
High Level Output Voltage	V _{OH}	CMOS, Load: 15pF I _{OH} =-4mA	90% V _{CC}	—	V	
Rise / Fall Time (10%V _{CC} to 90%V _{CC})	Tr/ Tf	CMOS, Load: 15pF	—	8	ns	
Symmetry	SYM	50% V _{CC}	45	55	%	
Phase Noise	—	@20MHz	@10Hz offset	—	-90	dBc/ Hz
			@100Hz offset	—	-120	
			@1kHz offset	—	-140	
			@10kHz offset	—	-150	
			@100kHz offset	—	-150	

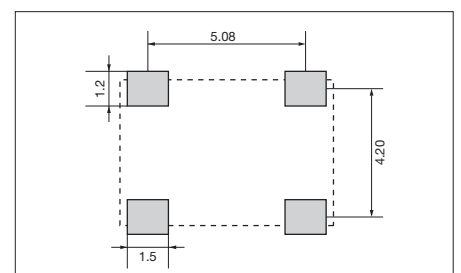
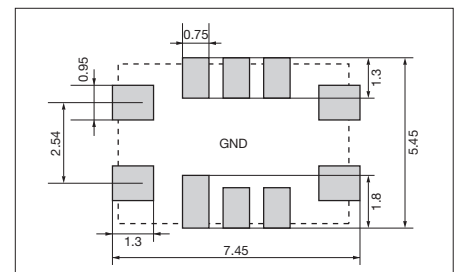
* Please contact us for other specifications.

Dimensions



Recommended Land Pattern

(Unit: mm)



单击下面可查看定价，库存，交付和生命周期等信息

[>>Kyocera\(京瓷\)](#)