

# LTVS20H10T5G

## 1-Line Uni-directional TVS Diode

The TVS20H10 is an uni-directional TVS diode, utilizing leading monolithic silicon technology to provide fast response time and low ESD clamping voltage, making this device an ideal solution for protecting voltage sensitive data and power line. The TVS20H10 complies with the IEC 61000-4-2 (ESD) standard with  $\pm 30\text{kV}$  air and  $\pm 30\text{kV}$  contact discharge. The high ESD surge protection make TVS20H10 an ideal choice to protect cell phone, digital cameras, audio players and many other portable applications.

### Features

- Protects one data or power line
- Low clamping voltage
- Complies with following standards:
  - IEC 61000-4-2 (ESD) immunity test
    - Air discharge:  $\pm 30\text{kV}$
    - Contact discharge:  $\pm 30\text{kV}$
- RoHS Compliant

### Applications

- Mobile Phones
- Battery Protection
- Power Line Protection
- Vbat pin for Mobile Devices
- Hand Held Portable Applications

LTVS20H10T5G



DFN2020-3



### Ordering information

Device	Marking	Shipping
LTVS20H10T5G	J10	4000/Tape&Reel

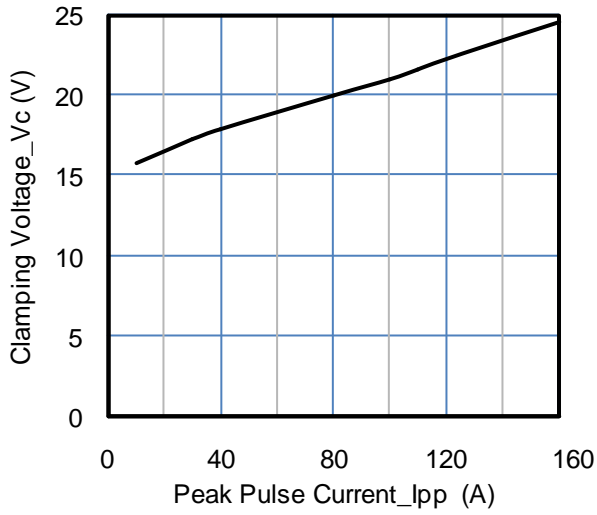
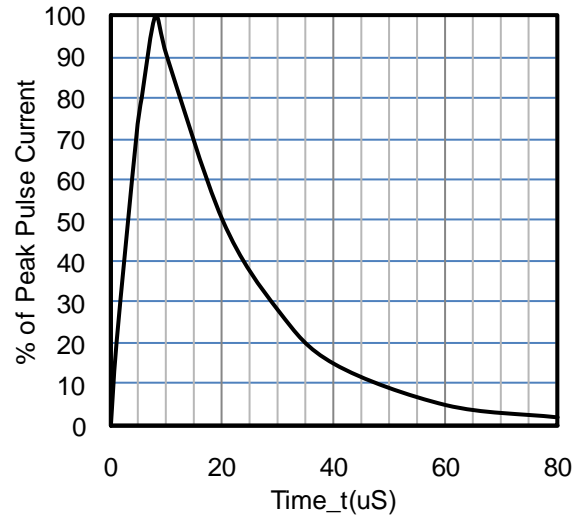
## LTVS20H10T5G

**Absolute Maximum Ratings ( $T_A=25^{\circ}\text{C}$  unless otherwise specified)**

Parameter	Symbol	Value	Unit
Peak Pulse Power (8/20 $\mu\text{s}$ )	Ppk	3000	W
Peak Pulse Current (8/20 $\mu\text{s}$ )	Ipp	140	A
ESD per IEC 61000-4-2 (Air) ESD per IEC 61000-4-2 (Contact)	VESD	$\pm 30$ $\pm 30$	kV
Operating Temperature Range	TJ	-55 to +125	$^{\circ}\text{C}$
Storage Temperature Range	Tstg	-55 to +150	$^{\circ}\text{C}$

**Electrical Characteristics ( $T_A=25^{\circ}\text{C}$  unless otherwise specified)**

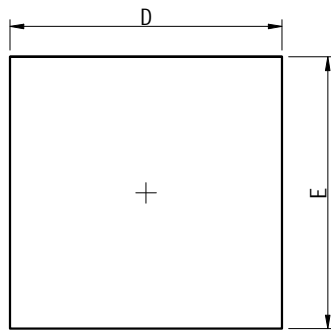
Parameter	Symbol	Min	Typ	Max	Unit	Test Condition
Reverse Working Voltage	VRWM			10	V	
Breakdown Voltage	VBR	11		14	V	IT = 1mA
Reverse Leakage Current	IR			0.5	$\mu\text{A}$	VR = 10V
Forward Voltage	VF		0.75	1.2	V	IF = 10mA
Clamping Voltage	VC			21.5	V	Ipp = 140A (8 x 20 $\mu\text{s}$ pulse)
Junction Capacitance	CJ		1700	1900	pF	VR = 0V, f = 1MHz

**LTVS20H10T5G****Typical Performance Characteristics ( $T_A=25^\circ\text{C}$  unless otherwise Specified)****Fig 1 .Clamping Voltage vs. Peak Pulse Current****Fig 2. 8 X 20uS Pulse Waveform**

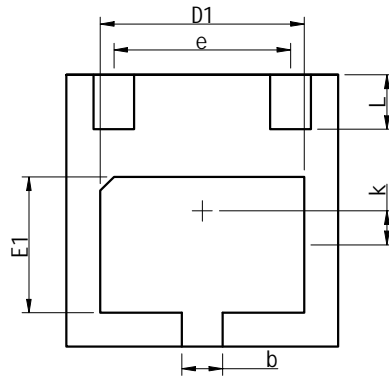
# LTVS20H10T5G

## OUTLINE AND DIMENSIONS

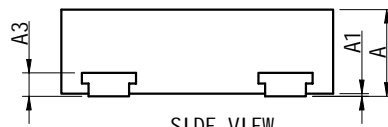
### DFN2020-3



TOP VIEW



BOTTOM VIEW

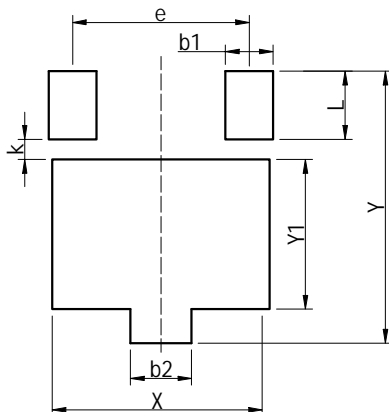


SIDE VIEW

DFN2020-3			
Dim	Min.	Typ.	Max.
A	0.60	0.65	0.70
A1	0.00	0.02	0.05
A3	0.152REF.		
D	1.95	2.00	2.05
E	1.95	2.00	2.05
D1	1.45	1.50	1.55
E1	0.95	1.00	1.05
b	0.25	0.30	0.35
e	1.30TYP.		
k	0.20	0.25	0.30
L	0.35	0.40	0.45

All Dimensions in mm

## SOLDERING FOOTPRINT



DFN2020-3	
Dim	(mm)
X	1.60
Y	2.00
b1	0.35
b2	0.45
L	0.50
Y1	1.10
k	0.15
e	1.30

单击下面可查看定价，库存，交付和生命周期等信息

[>>LRC\(乐山无线电\)](#)