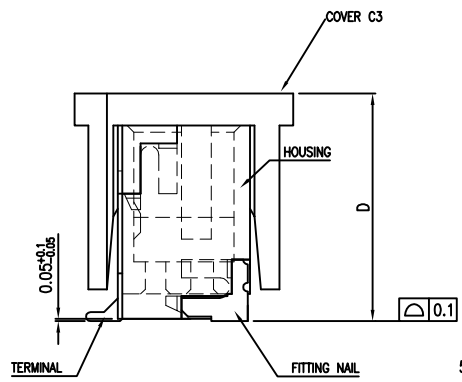
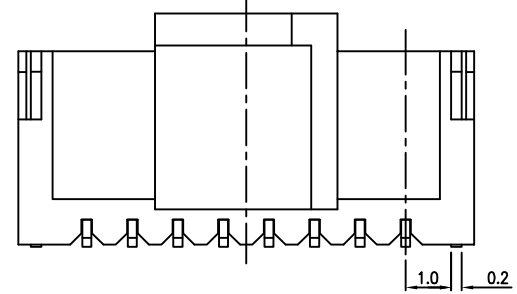
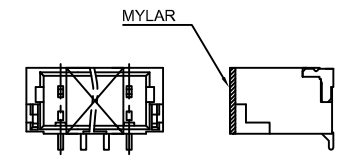
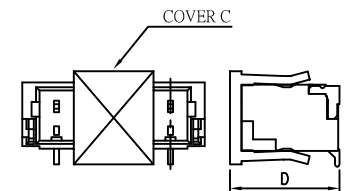
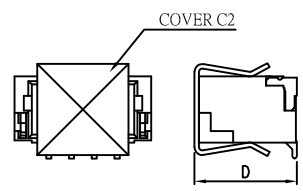
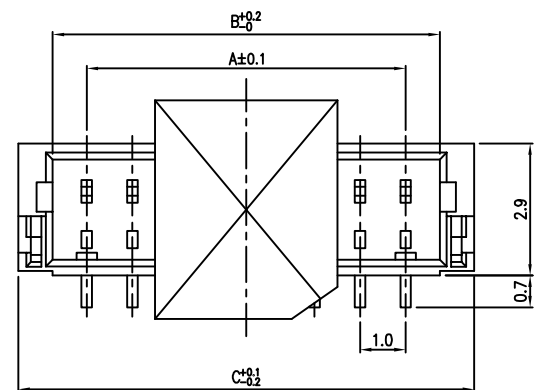




NOTES:

- MATERIAL:**
 HOUSING:HALOGEN FREE PLASTIC,HI-TEMP.UL94V-0
 TERMINAL:COPPER ALLOY
 FITTING NAIL:COPPER ALLOY
 PLATING: 'PLS SEE P/N LEGEND'
 COVER-C2 :PHOSPHOR BRONZE
 COVER-C3 :NYLON UL94V-0
 COVER-C :NYLON UL94V-0
- COPLANARITY 0.1 MM MAX. BASE ON DATUM A
- TRUE POSITION 0.1 MM MAX. BASE ON DATUM B
- THE SPEC. PLS. REFER TO PS-50228-XXXX-XXX.
- THE PACKING DRAWING PLS. REFER TO P/N LEGEND



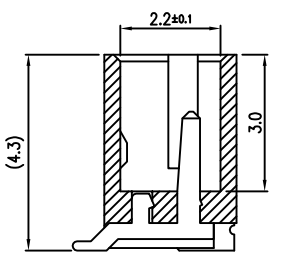
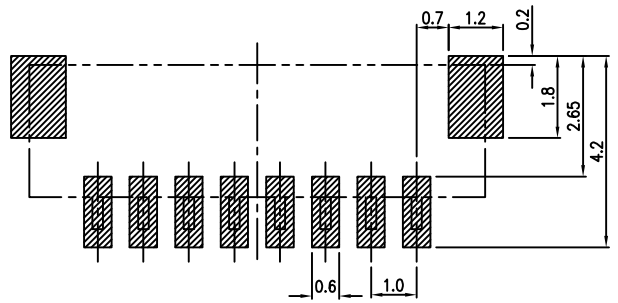
P/N LEGEND
50228-XXX X X-XXX

XXX	COLOR	PACKING	OTHER	TAPE COVER: SELF BOND
001	Black	87212-XXXX-TRP	N/A	N
002	Black	87212-XXXX-U-TRP		
003	White	87212-XXXX-TRP		
S01	Black	87212-XXXX-U-TRP	WITH COVER	N
S02	White	87212-XXXX2-U-TRP		
Y01	Black	87212-XXXX-TRP	N/A	Y
U01	Black	87212-XXXX-TRP	N/A	N
PC1	Black	87212-XXXX-U-TRP	N/A	N
004	Natural	87212-XXXX-TRP	N/A	N
005	Black	50228-XXXXX-04-TRP	N/A	N
006	White	87212-XXXXX-08-TRP	N/A	N

- NO OF CKT
- PACKING
 0:TAPE REEL
 1:TUBE
 4:TAPE&REEL WITH MYLAR
 5:TUBE WITH MYLAR
 7:TAPE&REEL WITH COVER
 8:TUBE WITH COVER

- PLATING
 N:Matt. Tin(Lead Free)
 L:Pure Tin(Lead Free)
 1:Gold Flash over all(Lead Free)
 C:15u" GOLD ON CONTACT FOR LEAD FREE
 4:3u" GOLD ON CONTACT
 0:15u" GOLD ON CONTACT(FOR 70U*MIN NICKEL OVERALL)

CKT	Dim A	Dim B	Dim C	Dim D	C/Size	M/Size
2	1.0	2.4	4.0	4.5	87212-C2A	W3T12
3	2.0	3.4	5.0		87212-C2	W4T12
4	3.0	4.4	6.0			
5	4.0	5.4	7.0	5.0	87212-C3	W6T12
6	5.0	6.4	8.0	4.8	87212-C	
7	6.0	7.4	9.0	5.0	87212-C3	WAT12
8	7.0	8.4	10.0			
9	8.0	9.4	11.0			
10	9.0	10.4	12.0			
11	10.0	11.4	13.0			
12	11.0	12.4	14.0			
13	12.0	13.4	15.0			
14	13.0	14.4	16.0			
15	14.0	15.4	17.0			
16	15.0	16.4	18.0			
17	16.0	17.4	19.0	WFT12		
18	17.0	18.4	20.0			
19	18.0	19.4	21.0			
20	19.0	20.4	22.0			
22	21.0	22.4	24.0			
24	23.0	24.4	26.0			
26	25.0	26.4	28.0			



PCB PATTERN LAYOUT

QUALITY SYMBOLS MAJOR Ⓢ CRITICAL Ⓢ	DRAWN BY	DATE																
	Chai,Yunhe	18/10/19																
GENERAL TOLERANCES (UNLESS SPECIFIED)	CHECKED BY	DATE	TITLE 1.0mm WTB CONN.WAFER SMT S/T TYPE															
	Xu - ZhiYong	18/10/19																
X. ±0.5 .X ±0.25 .XX ±0.15 .XXX ±0.1 ANGLES ±2°	APPROVED BY	DATE	<table border="1"> <tr> <td>UNITS</td> <td rowspan="2"> </td> <td>SIZE</td> <td rowspan="2">A4</td> <td>RFQ NO.</td> <td rowspan="2">X</td> </tr> <tr> <td>mm</td> <td>REV</td> <td>PART NO.</td> <td>SEE NOTES</td> </tr> <tr> <td>SCALE</td> <td>SHEET NO.</td> <td>REV</td> <td>DWG NO.</td> <td>50228-XXXXX-XXX</td> </tr> </table>	UNITS		SIZE	A4	RFQ NO.	X	mm	REV	PART NO.	SEE NOTES	SCALE	SHEET NO.	REV	DWG NO.	50228-XXXXX-XXX
	UNITS			SIZE		A4		RFQ NO.		X								
mm	REV		PART NO.	SEE NOTES														
SCALE	SHEET NO.	REV	DWG NO.	50228-XXXXX-XXX														
	Xu - ZhiYong	18/10/19																

单击下面可查看定价，库存，交付和生命周期等信息

[>>ACES\(宏致\)](#)