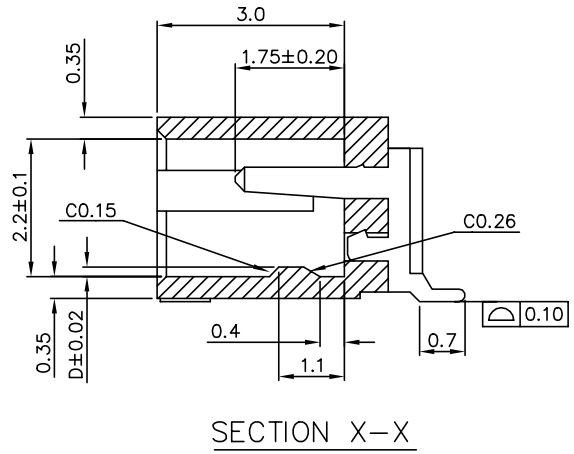
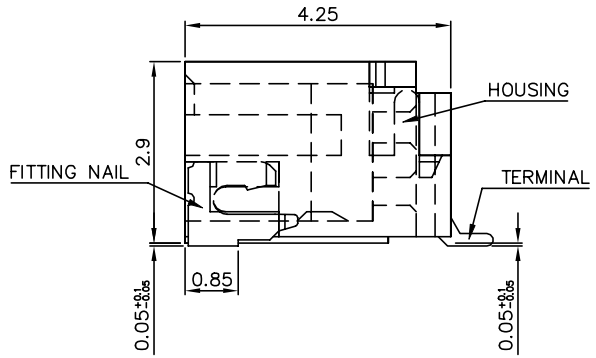


RECOMMENDED PCB LAYOUT  
GENERAL TOLERANCE ±0.05  
(TOP VIEW)



CKT	Dim A	Dim B	Dim C	Dim D
2	1.0	2.4	4.0	0.15
3	2.0	3.4	5.0	
4	3.0	4.4	6.0	
5	4.0	5.4	7.0	
6	5.0	6.4	8.0	
7	6.0	7.4	9.0	
8	7.0	8.4	10.0	
9	8.0	9.4	11.0	
10	9.0	10.4	12.0	
11	10.0	11.4	13.0	
12	11.0	12.4	14.0	0.08
13	12.0	13.4	15.0	
14	13.0	14.4	16.0	
15	14.0	15.4	17.0	
16	15.0	16.4	18.0	
17	16.0	17.4	19.0	
18	17.0	18.4	20.0	
19	18.0	19.4	21.0	
20	19.0	20.4	22.0	
22	21.0	22.4	24.0	
24	23.0	24.4	26.0	
26	25.0	26.4	28.0	
28	27.0	28.4	30.0	

- NOTES:
- MATERIAL:
    - HOUSING: HALOGEN FREE PLASTIC, HIGH TEMP.,UL94V-0.
    - CONTACT: COPPER ALLOY
    - FITTING NAIL: COPPER ALLOY
  - FINISH:
    - CONTACT: 50~100u" NICKEL UNDERPLATING OVERALL.  
1: GOLD FLASH PLATING(1~3u") OVERALL.  
N: 100~200u" MATT TIN PLATING ON SOLDER TAILS,  
L: 100~200u" PURE TINPLATING OVERALL.  
8: 120u" MIN. Pure-Tin ON SOLDER TAIL, 4U"GOLD  
C: 15U"GOLD ON CONTACT FAR LEAD FREE ON CONTACT AREA  
T: 120~170u" NICKEL UNDER OVERALL AND 10U"GOLD ON CONTACT  
B: 5u"GOLD ON CONTACT AREA, 1u" MIN GOLD ON SOLDER AREA
    - FITTING NAIL: 50~100u" NICKEL UNDERPLATING OVERALL.  
G: GOLD FLASH PLATING(1~3u") OVERALL.  
N: 100~200u" MATT TIN PLATING ON SOLDER TAILS,  
L: 100~200u" PURE TINPLATING OVERALL.
  - REFLOW SOLDER CAPABLE TO 260°C PER ACES SPEC.
  - SPEC. PLS. REFER TO PS-50224-xxxx-xxx
  - PACKAGE PLS. REFER TO 87213-XXXX-xxx-TRP & 50224-XXXX-AXX-TRP & 50224-XXXX-XXX-TRP
  - PART NUMBER

P/N LEGEND  
50224-XXX X X - XXX

NO OF CKT \_\_\_\_\_  
PACKING \_\_\_\_\_  
0: TAPE & REEL  
1: TUBE

PLATING \_\_\_\_\_  
L: LEAD FREE(PURE TIN)  
1: G/F OVER ALL(LEAD FREE)  
C: 15u"GOLD ON CONTACT  
N: MATT TIN(LEAD FREE)  
T: 10U"GOLD ON CONTACT  
B: 5U"GOLD ON CONTACT AREA  
AND 1u" MIN GOLD ON SOLDER AREA

HOUSING COLOR	HALOGEN FREE	PACKAGE	Others
BLACK	HF	87213-XXXX-TRP	001
NATURAL	HF	87213-XXXX-TRP	002
BLACK	HF	87213-XXXX-U-TRP	003
NATURAL	HF	87213-XXXX-TRP	004
NATURAL	HF	50224-XXXX-05-TRP	005
NATURAL	HF	87213-XXXX-04-TRP	006
BLACK	HF	87213-XXXX-U-TRP	S01
NATURAL	HF	87213-XXXX-U-TRP	S02

<b>QUALITY SYMBOLS</b> MAJOR Ⓢ CRITICAL Ⓢ <b>GENERAL TOLERANCES</b> (UNLESS SPECIFIED) X: ±0.5 X: ±0.25 .XX: ±0.15 .XXX: ±0.1 ANGLES ±2°	DRAWN BY GAOLI DATE 21/07/29	
	CHECKED BY XUZHONG DATE 21/07/29	
	APPROVED BY XUZHONG DATE 21/07/29	RFG NO. N/A
UNITS mm SCALE 2:1		SHEET NO. 1 OF 1
	SIZE A4 REV U	DWG NO. 50224-XXXX-XXX

单击下面可查看定价，库存，交付和生命周期等信息

[>>ACES\(宏致\)](#)