

PCB PATTERN LAYOUT  
GENERAL TOLERANCE  $\pm 0.05$

NOTES:

1. MATERIAL:
  - 1.1 HOUSING: HALOGEN FREE PLASTIC, HIGH TEMP., UL94V-0;
  - 1.2 CONTACT: COPPER ALLOY
  - 1.3 FITTING NAIL: COPPER ALLOY
2. FINISH:
  - 2.1 CONTACT:
    - 50~100u" NICKEL UNDERPLATING OVERALL
    - 1:GOLD FLASH PLATING(1~3u")
    - N: 100~200u" MATT TIN PLATING
    - L: 100~200u" PURE TIN PLATING
    - P:GOLD FLASH(1~3U") ON CONTACT AND
    - 80~150U" MATT TIN ON SOLDER
    - C:15u" GOLD ON CONTACT AND
    - 80~150U" MATT TIN ON SOLDER
  - 2.2 FITTING NAIL:
    - 50~100u" NICKEL UNDERPLATING OVERALL
    - 1:GOLD FLASH PLATING(1~3u")
    - N: 100~200u" MATT TIN PLATING
    - L: 100~200u" PURE TIN PLATING
3. REFLOW SOLDER CAPABLE TO 260°C PER ACES SPEC.
4. SPEC. PLS. REFER TO PS-50305-XXXX-XXX
5. PACKAGE PLS. REFER TO 88289-XXXX-TRP
6. PART NUMBER

P/N LEGEND

50308-XXX X X-XXX

XXX	Housing color	PACKING
001	BLACK	88289-XXXX-TRP
002	NATURAL	88289-XXXX-TRP

CKTS

Packing

0:TAPE & REEL

1:TUBE

4:Tape & Reel with Mylar

Plating

1:GOLD FLASH

L:PURE TIN LEAD FREE

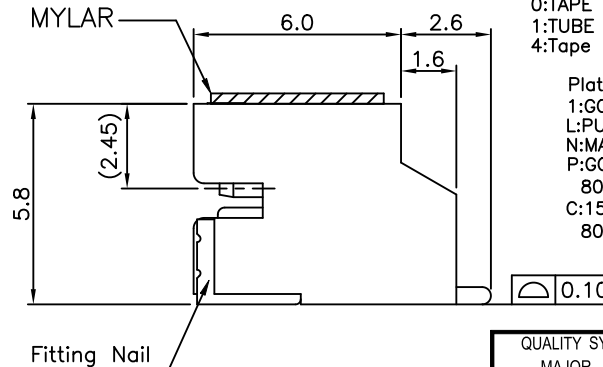
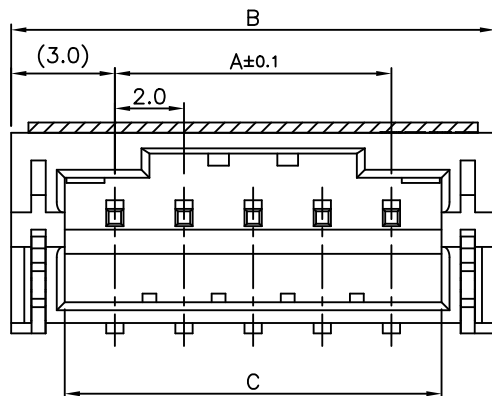
N:MATT TIN LEAD FREE

P:GOLD FLASH(1~3U") ON CONTACT AND

80~150U" MATT TIN ON SOLDER

C:15u" GOLD ON CONTACT AND

80~150U" MATT TIN ON SOLDER



0.10

QUALITY SYMBOLS

MAJOR

CRITICAL

GENERAL TOLERANCES

(UNLESS SPECIFIED)

X.  $\pm 0.5$

.X  $\pm 0.25$

.XX  $\pm 0.15$

.XXX  $\pm 0.1$

ANGLES  $\pm 2^\circ$

DRAWN BY

Xu,Zhonglin

DATE

20/10/30

CHECKED BY

Lu, Jing Quan

DATE

20/10/30

APPROVED BY

hsieh, fu yu

DATE

20/10/30

UNITS

mm

SIZE

A4

SCALE

5 : 1

SHEET NO.

1 OF 1

SIZE

A4

REV

G

DWG NO.

N/A

PART NO.

50308-XXXX-XXX

**ACES** ELECTRONICS

TITLE  
2.0mm WTB HEADER SMT R/A  
S/R H=5.8mm TYPE

CKT	Dim A	Dim B	Dim C	MYLAR
2	2.0	8.0	4.9	WTT12-50308
3	4.0	10.0	6.9	
4	6.0	12.0	8.9	
5	8.0	14.0	10.9	
6	10.0	16.0	12.9	
7	12.0	18.0	14.9	
8	14.0	20.0	16.9	
9	16.0	22.0	18.9	
10	18.0	24.0	20.9	
11	20.0	26.0	22.9	
12	22.0	28.0	24.9	
13	24.0	30.0	26.9	
14	26.0	32.0	28.9	
15	28.0	34.0	30.9	
16	30.0	36.0	32.9	
17	32.0	38.0	34.9	
18	34.0	40.0	36.9	
19	36.0	42.0	38.9	
20	38.0	44.0	40.9	

单击下面可查看定价，库存，交付和生命周期等信息

[>>ACES\(宏致\)](#)