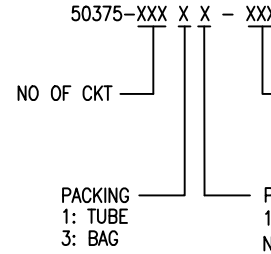




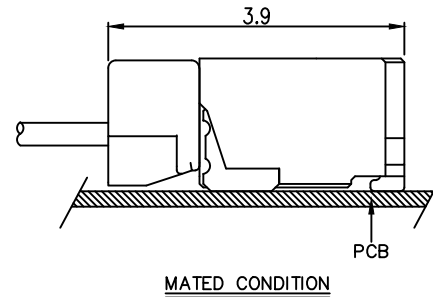
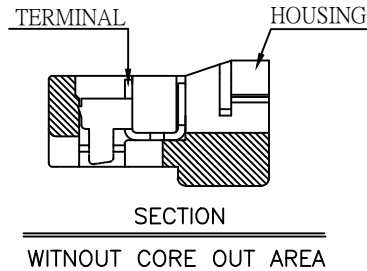
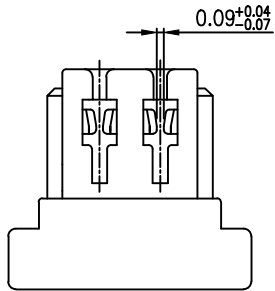
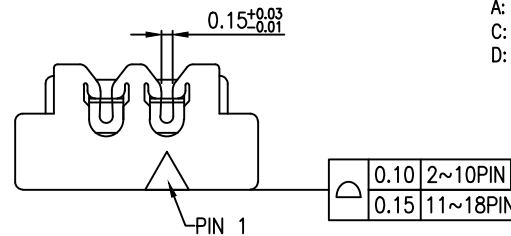
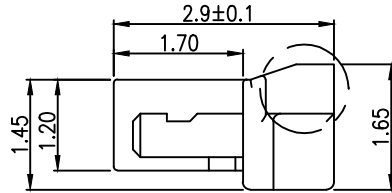
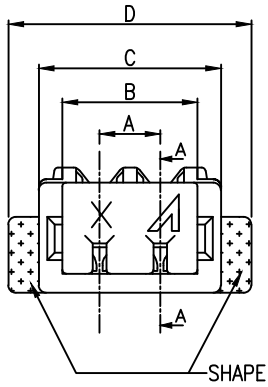
NOTES:

1. MATERIAL:
 - 1.1 HOUSING: High Temperature Thermal Plastic .
 - 1.2 CONTACT: COPPER ALLOY.
2. FINISH:
 - 1: Gold Flash(1u" MIN.)
 - N: 80~120u"Matt Tin(Lead Free)
 - A:3u" MIN GOLD ON CONTACT
 - C:15u" MIN GOLD ON CONTACT
 - D:30u" MIN GOLD ON CONTACT
3. Applicable wire:
 - AWG #32/7C,UL1867/UL10064, OD:0.38±0.02mm.
 - WIRE RETENTION FORCE PLS REFER TO SPEC
4. SPEC. PLS. REFER TO PS-50208-xxxxx-xxx
5. PART NUMBER

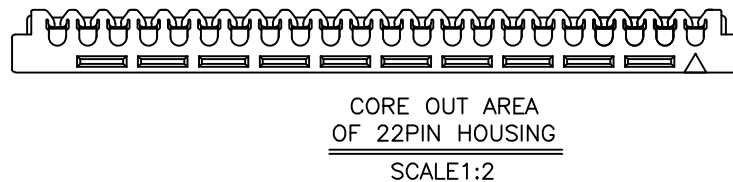
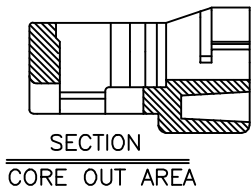
P/N LEGEND



XXX	SHAPE	LOGO	MATERIAL&COLOR	Halogen Free
001	NONE	YES	PBT & BLACK	HF
002	YES	YES	PBT & BLACK	HF
006	NONE	YES	LCP & BLACK	HF
007	NONE	YES	Nylon 46 & BLACK	HF
008	NONE	YES	LCP & WHITE	HF



CKT.	Dim A	Dim B	Dim C	Dim D
2	0.80	1.78	2.40	3.20
3	1.60	2.58	3.20	4.00
4	2.40	3.38	4.00	4.80
5	3.20	4.18	4.80	5.60
6	4.00	4.98	5.60	6.40
7	4.80	5.78	6.40	7.20
8	5.60	6.58	7.20	8.00
9	6.40	7.38	8.00	8.80
10	7.20	8.18	8.80	9.60
11	8.00	8.98	9.60	10.40
12	8.80	9.78	10.40	11.20
13	9.60	10.58	11.20	12.00
14	10.40	11.38	12.00	12.80
15	11.20	12.18	12.80	13.60
16	12.00	12.98	13.60	14.40
17	12.80	13.78	14.40	15.20
18	13.60	14.58	15.20	16.00



QUALITY SYMBOLS MAJOR Ⓜ CRITICAL Ⓢ GENERAL TOLERANCES (UNLESS SPECIFIED) X. ±0.5 .X ±0.25 .XX ±0.15 .XXX ±0.10 ANGLES ±2°	DRAWN BY ZHANG HAO CHECKED BY BRAVE APPROVED BY BRAVE UNITS mm SCALE 1:1	DATE 19/06/19 DATE 19/06/19 DATE 19/06/19 DATE 19/06/19 SIZE A4 REV Q SHEET NO. 1 OF 1	ACES ELECTRONICS TITLE 0.8mm Pitch WTB CONN. DWG NO. 50375-XXXXX-XXX PART NO. SEE NOTES
-----------------------------------------------------------------------------------------------------------------------------------------------------------------	----------------------------------------------------------------------------------------------------------------------------------------	--------------------------------------------------------------------------------------------------------------------------------------------------------------------------------	---------------------------------------------------------------------------------------------------------------------------------------

单击下面可查看定价，库存，交付和生命周期等信息

[>>ACES\(宏致\)](#)