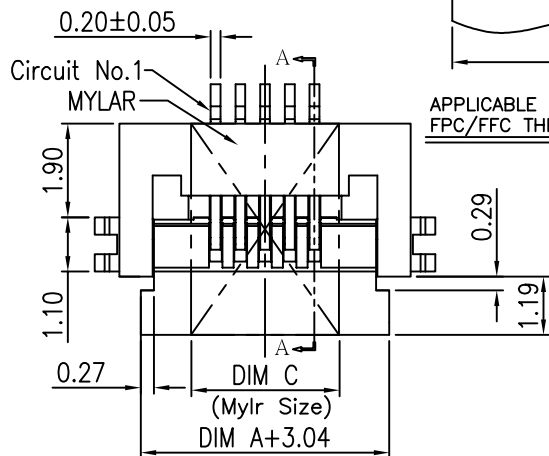
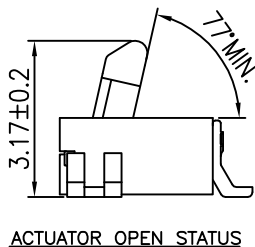


- NOTES:
- MATERIAL: HOUSING IS HIGH TEMP THERMO PLASTIC. TERMINAL and FITTING NAIL IS COPPER ALLOY.
  - PLATING:
    - contact:
      - 50 u" MIN. NICKEL ALL OVER.
      - 1: GOLD FLASH OVERALL.
      - M:3u" GOLD ON CONTACT AND SOLDER FOR SELECTIVENESS PLATING
      - N: 100u" MIN. MATT TIN UNDERPLATNG OVERALL.
      - 3: 1u" GOLD ON CONTACT AREA AND SOLDER AREA
    - FITTING NAIL:
      - 50u" MIN. NICKEL UNDERPLATING OVERALL.
      - 1: GOLD FLASH UNDERPLATING OVERALL.
      - N: 100u" MIN. MATT TIN UNDERPLATING OVERALL.
  - THE COPLANARITY IS 0.10mm MAX.
  - THE TRUE POSITION IS 0.10mm MAX.
  - REFLOW SOLDER CAPABLE TO 260°C PER ACES SPEC.
  - SPEC. PLS. REFER TO PS-50507-xxxx-xxx
  - PACKAGE PLS. REFER TO 88195-xxxx-TRP



APPLICABLE FPC/FFC LAYOUT  
FPC/FFC THICKNESS 0.30±0.03mm

RECOMMEND PCB LAYOUT  
GENERAL TOLORANCE ±0.10



PART LEGEND

50506-XXX X X-XXX

CKTS

Packing

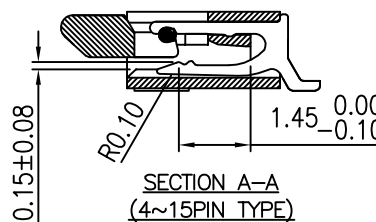
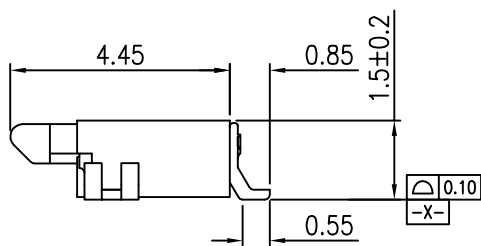
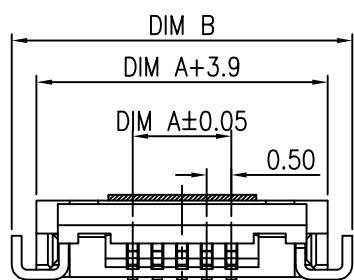
- 0:TAPE & REEL
- 1:TUBE
- 4:T&R WITH MYLAR
- 5:TUBE WITH MYLAR

XXX	HOUSING MATERIAL&COLOR	ACTUATOR MATERIAL&COLOR	PACKAGE
.001	LCP&BLACK	PAG&NATURAL	88195-XXCR

Plating

- 1:GOLD FLASH OVERALL
- M:3u" GOLD ON CONTACT AND SOLDER FOR SELECTIVENESS PLATING
- N: MATTE TIN(LEAD FREE)
- 3: 1u" GOLD ON CONTACT AREA
- 1u" GOLD ON SOLDER AREA

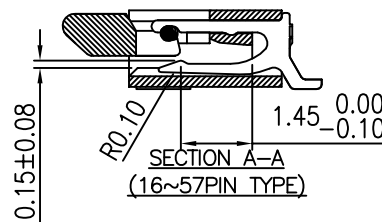
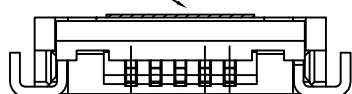
CKT'S	DIM A			CKT'S	DIM B		
	±0.05	±0.10	±0.20		±0.05	±0.15	±0.20
4	1.50	6.4		31	15.00	19.9	
5	2.00	6.9	W3T12	32	15.50	20.4	
6	2.50	7.4		33	16.00	20.9	
7	3.00	7.9		34	16.50	21.4	
8	3.50	8.4	W3T12	35	17.00	21.9	
9	4.00	8.9		36	17.50	22.4	
10	4.50	9.4	W3T12	37	18.00	22.9	
11	5.00	9.9		38	18.50	23.4	
12	5.50	10.4		39	19.00	23.9	
13	6.00	10.9		40	19.50	24.4	
14	6.50	11.4		41	20.00	24.9	
15	7.00	11.9	W6T12	42	20.50	25.4	
16	7.50	12.4		43	21.00	25.9	
17	8.00	12.9		44	21.50	26.4	WAT12
18	8.50	13.4		45	22.00	26.9	
19	9.00	13.9		46	22.50	27.4	
20	9.50	14.4		47	23.00	27.9	
21	10.00	14.9		48	23.50	28.4	
22	10.50	15.4		49	24.00	28.9	
23	11.00	15.9		50	24.50	29.4	
24	11.50	16.4		51	25.00	29.9	
25	12.00	16.9	WA112	52	25.50	30.4	
26	12.50	17.4		53	26.00	30.9	
27	13.00	17.9		54	26.50	31.4	
28	13.50	18.4		55	27.00	31.9	
29	14.00	18.9		56	27.50	32.4	
30	14.50	19.4		57	28.00	32.9	



FOR WXT12-88195 T=0.12



FOR W3T06-88195 T=0.06



QUALITY SYMBOLS	DRAWN BY	DATE	
MAJOR	Xu,JinJun	21/05/29	
CRITICAL	CHECKED BY	DATE	
GENERAL TOLERANCES (UNLESS SPECIFIED)	Xu,ZhiYong	21/05/29	
X. ±0.5	APPROVED BY	DATE	TITLE
.X ±0.35	Xu,ZhiYong	21/05/29	0.5mm ZIF EASY-ON FPC
.XX ±0.35			S/T R/A H=1.5 mm
.XXX ±0.25	UNITS	SIZE	RFG NO.
ANGLES ±2°	mm	A4	N/A
	SCALE	SHEET NO.	REV
	6:1	1 OF 1	DWG NO.
			50506-XXXXX-XXX

单击下面可查看定价，库存，交付和生命周期等信息

[>>ACES\(宏致\)](#)