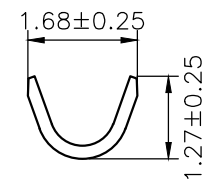
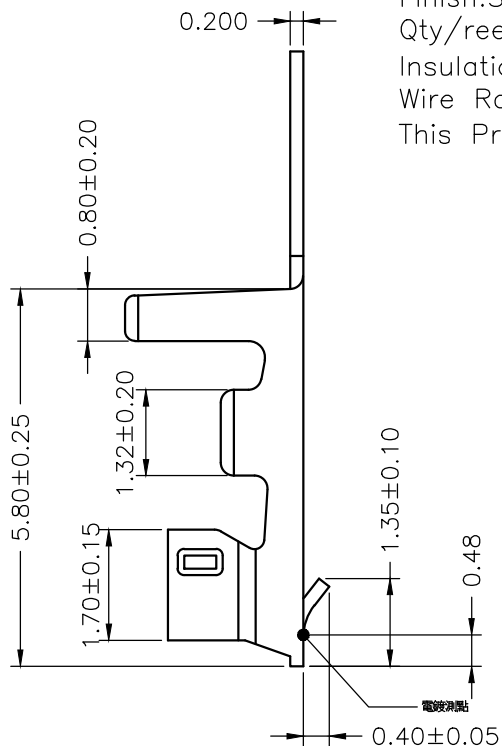


SEC:A-A



SEC:B-B

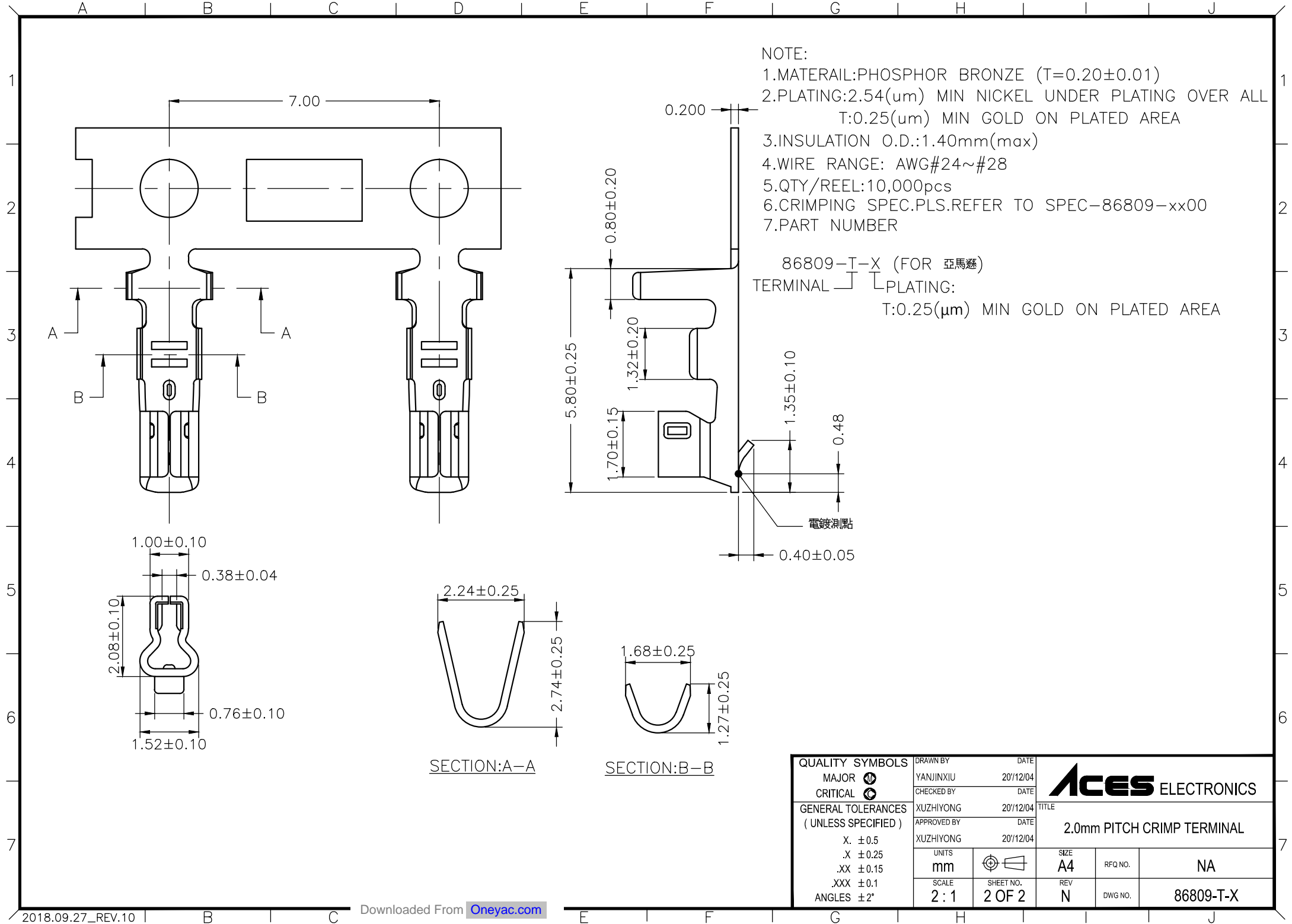


NOTE:  
 Material: Phosphor Bronze  
 Finish: See P/N LEGEND Plating code  
 Qty/reel: 10,000 pcs  
 Insulation O.D.: 1.40mm (max)  
 Wire Range: AWG #24~#30  
 This Product Spec. pls. refer to 86809-xx00 series.

P/N LEGEND  
 86809-T-X

Plating:  
 □: Tin Lead  
 L: Pure Tin  
 1: Gold Flash over all (Lead Free)  
 G: 10u" Gold Plating On Contact Area  
 P: 1u" Gold Plating On Plating Area  
 A: 3u" Gold Plating On Plating Area  
 C: 15u" GOLD PLATING

<b>QUALITY SYMBOLS</b> MAJOR CRITICAL	DRAWN BY	DATE			
	YANJINXIU	20/12/04			
<b>GENERAL TOLERANCES</b> (UNLESS SPECIFIED) .X ±0.25 .XX ±0.15 .XXX ±0.1 ANGLES ±2°	CHECKED BY	DATE	<b>TITLE</b> 2.0mm PITCH CRIMP TERMINAL		
	XUZHUYONG	20/12/04			
	APPROVED BY	DATE	UNITS	SIZE	RFQ NO.
	XUZHUYONG	20/12/04	mm	A4	NA
	SCALE	SHEET NO.	REV	DWG NO.	
	2:1	1 OF 2	N	86809-T-X	



NOTE:  
 1.MATERAIL:PHOSPHOR BRONZE (T=0.20±0.01)  
 2.PLATING:2.54(um) MIN NICKEL UNDER PLATING OVER ALL  
 T:0.25(um) MIN GOLD ON PLATED AREA  
 3.INSULATION O.D.:1.40mm(max)  
 4.WIRE RANGE: AWG#24~#28  
 5.QTY/REEL:10,000pcs  
 6.CRIMPING SPEC.PLS.REFER TO SPEC-86809-xx00  
 7.PART NUMBER

86809-T-X (FOR 亞馬遜)  
 TERMINAL PLATING:  
 T:0.25(um) MIN GOLD ON PLATED AREA

SECTION:A-A

SECTION:B-B

<b>QUALITY SYMBOLS</b> MAJOR CRITICAL <b>GENERAL TOLERANCES</b> ( UNLESS SPECIFIED ) X. ±0.5 .X ±0.25 .XX ±0.15 .XXX ±0.1 ANGLES ±2°	DRAWN BY YANJINXIU	DATE 20/12/04					
	CHECKED BY XUZHIYONG	DATE 20/12/04				TITLE 2.0mm PITCH CRIMP TERMINAL	
	APPROVED BY XUZHIYONG	DATE 20/12/04	UNITS mm		SIZE A4	RFQ NO.	NA
	SCALE 2:1	SHEET NO. 2 OF 2	REV N	DWG NO.	86809-T-X		

单击下面可查看定价，库存，交付和生命周期等信息

[>>ACES\(宏致\)](#)