

Preliminary Specifications Subject to Change without Notice

DESCRIPTION

The JW[®]5059TC and JW[®]5059TF are monolithic buck switching regulators based on I2 architecture for fast transient response. Operating with an input range of 4.5V~18V, JW5059TC and JW5059TF deliver 2A of continuous output current with two integrated N-Channel MOSFETs. The internal synchronous power switches provide high efficiency without the use of an external Schottky diode. At light loads, JW5059TC operates in low frequency to maintain high efficiency.

JW5059TC and JW5059TF guarantee robustness with output short protection, thermal protection, current run-away protection and input under voltage lockout.

JW5059TC and JW5059TF are available in SOT23-6 package, which provide a compact solution with minimal external components.

Company's Logo is Protected, "JW" and "JOULWATT" are Registered Trademarks of JoulWatt technology Inc.

FEATURES

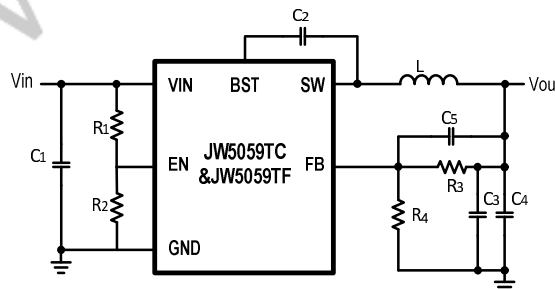
- 4.5V to 18V operating input range
- 2A output current
- Up to 95% efficiency
- FCCM at light load (JW5059TF)
- PFM at light load (JW5059TC)
- 600kHz switching frequency
- Internal soft-start
- Input under voltage lockout
- Current run-away protection
- Output short protection
- Thermal protection
- Available in SOT23-6 package

APPLICATIONS

- Distributed Power Systems
- Networking Systems
- FPGA, DSP, ASIC Power Supplies
- Green Electronics/ Appliances
- Notebook Computers

TYPICAL APPLICATION

2A Step-down Regulator



单击下面可查看定价，库存，交付和生命周期等信息

[>>JOULWATT\(杰华特\)](#)