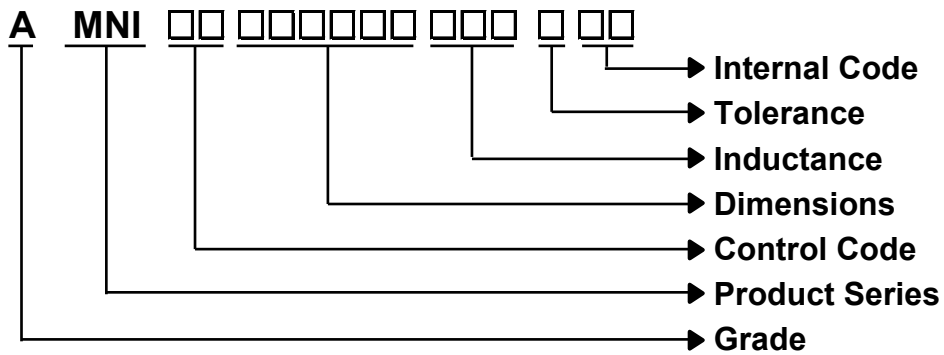


AMNI00050551 Series Specification AEC-Q200

1 Scope: This specification applies to Large current and Low Loss SMD Power INDUCTOR

2 Part Numbering:



3 Rating:

Operating Temperature: - 55°C ~ 125°C (Including self - temperature rise)

Storage Temperature: (on tape & reel): -20°C to +40°C; 75% RH max.

4 Marking:



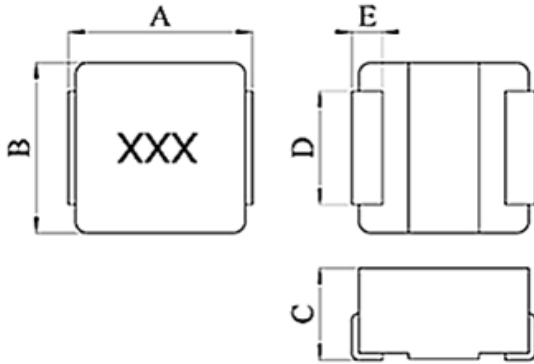
Marking : **XXX**

Marking color : **Black**

AMNI00050551 Series Specification

AEC-Q200

5 Configuration and Dimensions:



Dimensions in mm

TYPE	050551
A	5.6 ± 0.2
B	5.5 ± 0.2
C	5.1 Max
D	4.0 ± 0.2
E	1.2 ± 0.3

6 Electrical Characteristics:

Part No.	Inductance (uH)	Tolerance (±%)	Test Freq.	I _{rms} (A) Typ	I _{sat} (A) Typ	RDC(mΩ) Max(Typ)	Marking
AMNI00050551220MR1	22	20	100kHz,0.25V	3.4	3.6	120(100)	220

Note:

1. The heat rating current (I_{rms}) will cause temperature rise approximate 40°C.
2. The saturation current (I_{sat}) will cause initial inductance drop approximate 30%.
3. All test data is referenced at 25°C ambient.
4. Operating temperature range -55°C to +125°C.
5. The part temperature (ambient + temp rise) should not exceed 125°C under the worst condition.
6. The temperature of component is affected by application conditions, e.g. circuit design, copper thickness of PCB and cooling conditions, the actual component temperature should be tested in the end application.
7. Absolute maximum voltage 25VDC.

AMNI00050551 Series Specification AEC-Q200

7 Packaging:

7.1 Packaging -Cover tape

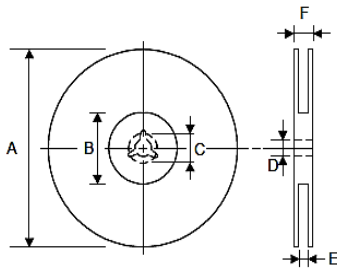
The force for tearing off cover tape is 10 to 130 grams in the arrow direction.



7.2 Packaging Quantity

TYPE	PCS/REEL
050551	500

7.3 Reel Dimensions

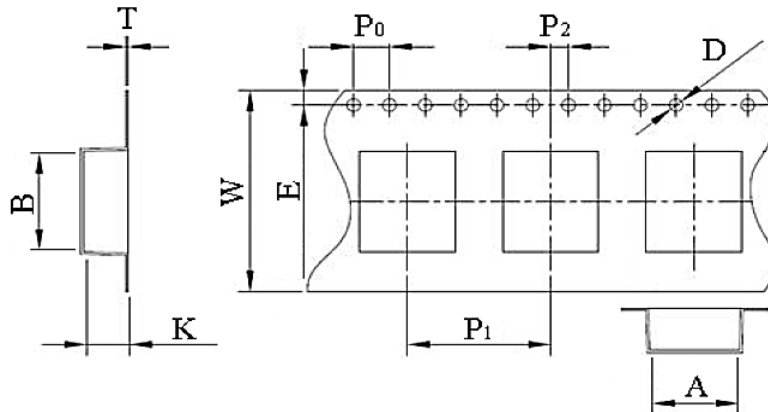


Dimensions in mm

TYPE	A	B	C	D	E	F
050551	330±2	100±1	21.5±0.5	13±1.0	16.4+2.0/-0	21.4±2

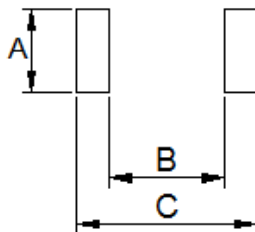
AMNI00050551 Series Specification AEC-Q200

7 Packaging: 7.4 Tape Dimensions in mm



TYPE	A	B	W	P1	K
050551	6.1±0.1	6.0±0.1	16.0±0.3	12.0±0.1	5.5±0.1
	P0	P2	D	E	T
	4.0±0.1	2.0±0.1	1.5±0.1	1.75±0.1	0.4±0.05

8 Recommended Pattern:



Dimensions in mm

TYPE	A(mm)	B(mm)	C(mm)
050551	4.34	2.16	5.7

9 Note:

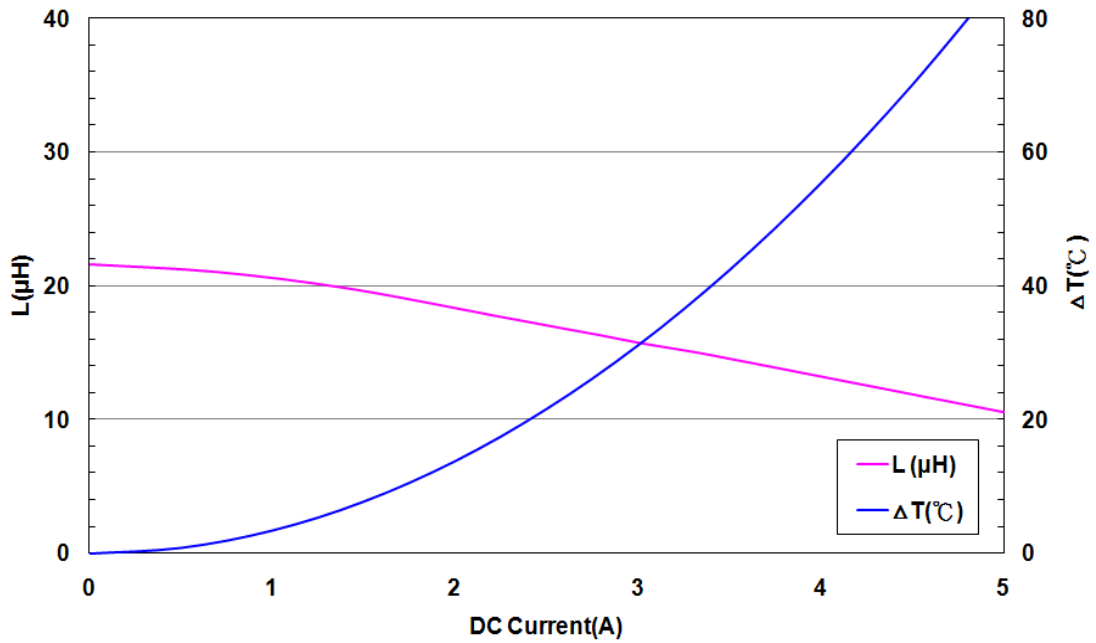
1. Do not make any through holes and copper pattern in the dotted line area. Except a copper pattern to the electrode.
2. Don't design/mount any components in contact with this product
3. The moisture sensitivity level (MSL) of products is classified as level 1.

This power choke do not have any protective function in abnormal condition such as overload, short circuit, open conditions and etc, it shall be confirmed as the end product that there is no risk of smoking, fire, dielectric withstand voltage, insulation resistance etc. in abnormal conditions to provide protective devices and/or protection circuit in the end product.

It is recommended the temperature rise of choke during operation is less than 50°C.

AMNI00050551 Series Specification AEC-Q200

10 Graph:



单击下面可查看定价，库存，交付和生命周期等信息

[>>CHILISIN\(奇力新\)](#)