

SYM	ECN	DESCRIPTION	DATE	APPROVED
4		UPDATED DRAWING	02/26'20	IP
5		DEFINE THE NEW CODING, REDEFINE PIN NO. FOR 2x2&2x3	08/13'20	IP
6		SEPARATED DRAWING FOR 1X1 VERSION	02/27'21	IP

- NOTES/注释:
- MATERIAL (SEE TABLE A)
 - GENERAL SPECIFICATION:
 - CURRENT CONTACT CARRYING CAPACITY MAXIMAL: 3A.
 - CONTACT RESISTANCE: 25mΩ MAX.
 - INSULATOR RESISTANCE: 100MΩ MIN. AT V_{dc}=500V, T=60S
 - DIELECTRIC WITHSTANDING VOLTAGE: 500 VAC
 - OPERATION TEMPERATURE: -40°C~+105°C
 - DIMENSIONING SHALL BE INTERPRETED PER ASME Y14.5M 1994.
 - COMPLIANCE WITH OPEN ALLIANCE TC9, IEEE100MBASE-T1, IEEE802.3ch-10GBASE-T1
符合OPEN ALLIANCE TC9, IEEE100MBASE-T1, IEEE802.3ch-10GBASE-T1.
 - BE SUITABLE FOR REFLOW SOLDERING OF TEMPERATURE 260°C 30S.

ORDER P/N SYSTEM
NTHBR11X100XST

11:1X1 PORT

0: TYPE1 (FOR SEALED)
1: TYPE2 (FOR UNSEALED)

CODE OPTION
A: CODE A
B: CODE B
C: CODE C
D: CODE D
Z: CODE Z

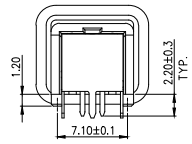
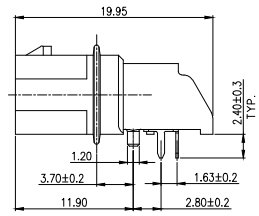
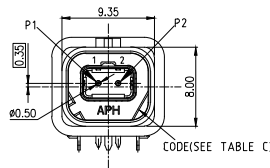
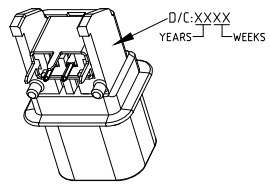
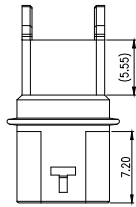
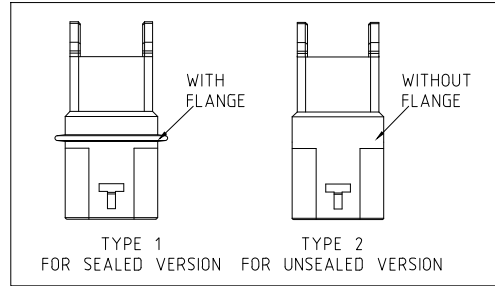


TABLE B (CODE OPTION):

CODE A BLACK	CODE B WHITE	CODE C GREEN RAL6002	CODE D BROWN RAL8011	CODE Z BLUE RAL5021

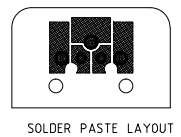
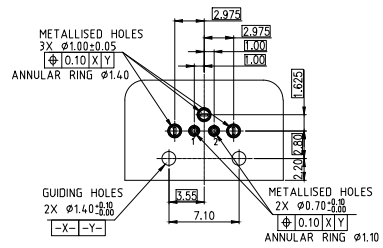
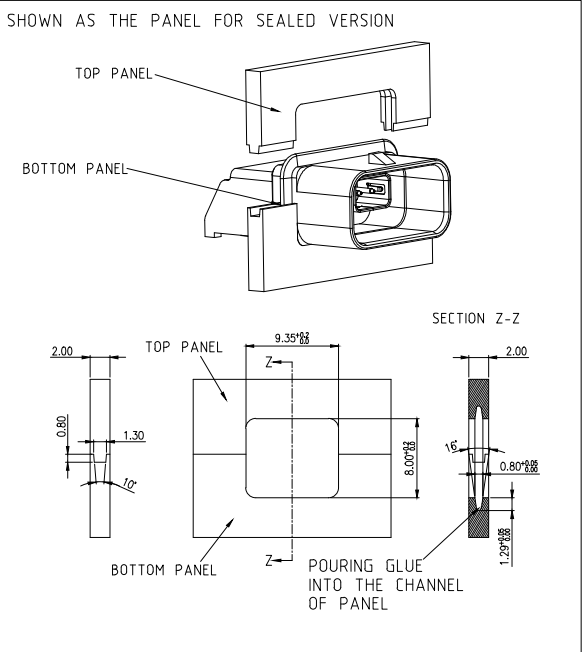


TABLE A (BOM)

ITEM	COMPONENTS	MATERIAL	QTY
④	SHIELD	COPPER ALLOY NI PLATED	1
③	CONTACT	COPPER ALLOY TIN PLATED	2
②	HOLDER	HIGH-TEMP. PLASTIC, BLACK	1
①	HOUSING	HIGH-TEMP. PLASTIC, COLOR SEE CODE OPTION	1



HF(无卤)
Non-HF(有卤)

UNLESS OTHERWISE SPECIFIED TOLERANCES

	U.S.	METRIC
.X	+/-	0.50
.XX	+/-	0.30
.XXX	+/-	0.20
FRACTIONS	+/-	
ANGLES	+/-	3°

FOR MATERIALS AND FINISHES SEE NOTES

REMOVE SHARP EDGES

DIMENSIONS

U.S.	INCHES	METRIC	MM

APPROVAL

DATE

DRAWN Angelman 02/27'21

CHECKED

CHECKED

DRAWING FILE :

ANGLE OF PROJECTION

Amphenol

Amphenol East Asia Limited

TITLE
NETBRIDGE+ 1X1
R/A RECEPTACLE CONNECTOR

SIZE	DRAWING NO.	REV.
A3	NTHBRXXX100XST	6
SCALE	NONE	SHEET 1 OF 1

单击下面可查看定价，库存，交付和生命周期等信息

[>>Amphenol\(安费诺\)](#)