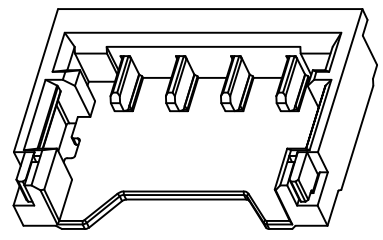
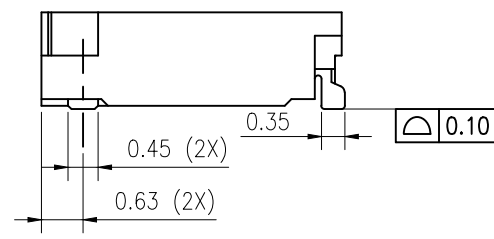
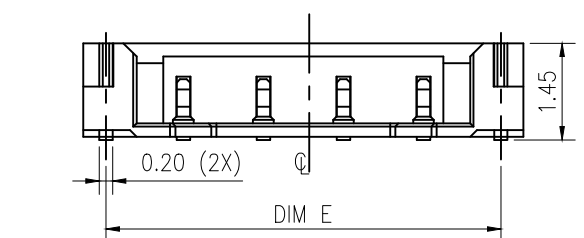


RECOMMENDED PCB LAYOUT  
(GENERAL TOLERANCE ±0.05)



- NOTES:
- MATERIAL:
    - HOUSING:HTN;UL94V-0.
    - CONTACT:BRASS.
    - FITTING NAIL: BRASS
  - FINISH:
    - TERMINAL CONTACT:
      - 50u" MIN.NICKEL UNDERPLATING OVERALL
        - GOLD FLASH(1~3U") ON CONTACT AREA AND SOLDER AREA
        - CONTACT AREA: 5u" GOLD PLATING
        - SOLDER AREA: GOLD FLASH
        - GOLD FLASH(1~3U") ON CONTACT AND SOLDER AREA FOR SELECTIVENESS PLATING
      - 100u" MIN.NICKEL UNDERPLATING OVERALL
        - 10u" GOLD ON CONTACT AND GOLD FLASH ON SOLDER AREA
    - FITTING NAIL:
      - 50~100u" NICKEL UNDERPLATING OVERALL
      - 100u" MIN. MATT TIN PLATING
  - SPEC.PLS.REFER TO PS-50269-xxxx-xxx
  - PACKAGE PLS. SEE PART NUMBER
  - PART NUMBER

50269-XXX X X-XXX

NO OF CKT

PACKING  
O:TAPE & REEL

XXX	PACKAGE	Material/Color
001	9123-XXXX-TRP	HF PLASTIC & BLACK
003	9123-XXXX-05-TRP(BOND)	HF PLASTIC & BLACK
004	5096-XXXX-01-TRP	HF PLASTIC & BLACK
005	9123-XXXX-01-TRP	HF PLASTIC & BLACK
101	9123-XXXX-07-TRP	HF PLASTIC & BLACK
N01	5096-XXXX-01-TRP	HF PLASTIC & BLACK
N02	9123-XXXX-01-TRP	HF PLASTIC & BLACK
M01	9123-XXXX-06-TRP	HF PLASTIC & BLACK
L01	9123-XXXX-06-TRP(SOR UP BONDED)	HF PLASTIC & BLACK
006	5096-xxxx-05-TRP	HF PLASTIC & BLACK
007	9123-XXXX-09-TRP	HF PLASTIC & BLACK
008	5096-XXXX-05-TRP	HF PLASTIC & BLACK
009	9123-XXXX-05-TRP	HF PLASTIC & BLACK

PLATING

1: GOLD FLASH

U: CONTACT AREA: 5u" GOLD PLATING

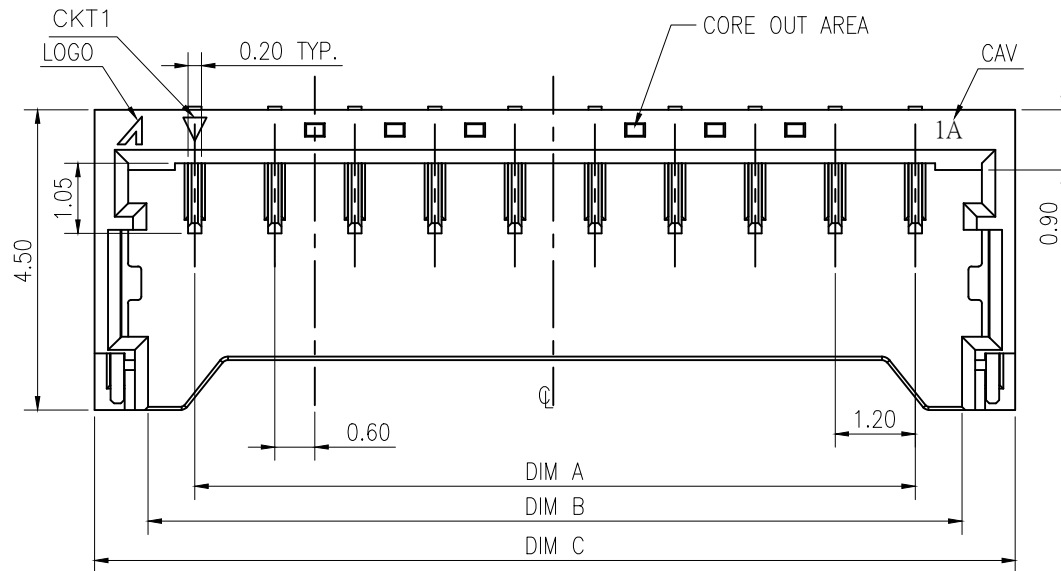
SOLDER AREA: GOLD FLASH

M: GOLD FLASH ON CONTACT AND SOLDER AREA FOR SELECTIVENESS PLATING

T: 10u" GOLD ON CONTACT AND GOLD FLASH ON SOLDER AREA

CKT	Dim A	Dim B	DimC	DimE
2	1.2	2.6	4.2	3.52
3	2.4	3.8	5.4	4.72
4	3.6	5.0	6.6	5.92
5	4.8	6.2	7.8	7.12
6	6.0	7.4	9.0	8.32
7	7.2	8.6	10.2	9.52
8	8.4	9.8	11.4	10.72
9	9.6	11.0	12.6	11.92
10	10.8	12.2	13.8	13.12

QUALITY SYMBOLS MAJOR (M) CRITICAL (C) GENERAL TOLERANCES (UNLESS SPECIFIED) X. ±0.5 .X ±0.25 .XX ±0.15 .XXX ±0.1 ANGLES ±2°	DRAWN BY Huailin	DATE 22/01/11	
	CHECKED BY Xu,ZhiYong	DATE 22/01/11	
	APPROVED BY Xu,ZhiYong	DATE 22/01/11	SIZE A4
	UNITS mm		DWG NO. 50269-XXXXX-XXX
	SCALE 2:1	SHEET NO. 1 OF 2	REV U
			PART NO. SEE NOTES



CORE OUT AREA OF 5PIN ~15PIN

<b>QUALITY SYMBOLS</b> MAJOR CRITICAL	DRAWN BY Huailin	DATE 22/01/11		
	CHECKED BY Xu,ZhiYong	DATE 22/01/11		
<b>GENERAL TOLERANCES          (UNLESS SPECIFIED)</b> .X ±0.5 .XX ±0.25 .XXX ±0.1 ANGLES ±2°	APPROVED BY Xu,ZhiYong	DATE 22/01/11	<b>TITLE</b> 1.2mm Pitch WTB Wafer Conn.SMT S/R S/T Type	
	UNITS mm		SIZE A4	DWG NO. 50269-XXXXX-XXX
	SCALE 2 : 1	SHEET NO. 2 OF 2	REV U	PART NO. SEE NOTES

单击下面可查看定价，库存，交付和生命周期等信息

[>>ACES\(宏致\)](#)