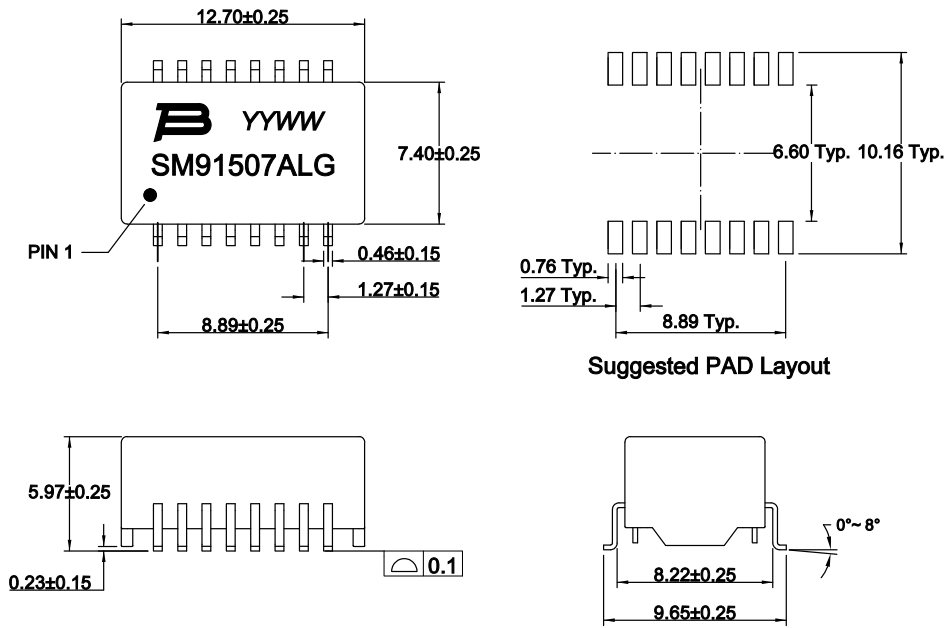
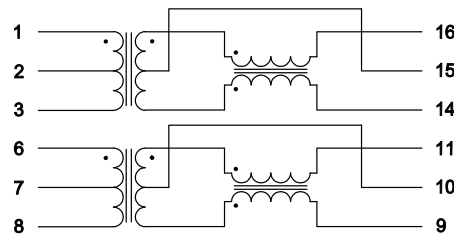


## MECHANICAL SPECIFICATIONS:



## SCHEMATIC AND CONSTRUCTION DRAWING:



### Bourns Worldwide Contacts:

Asia-Pacific: Tel: +886-2 2562-4117 Fax: +886-2 2562-4116

EMEA: Tel: +36 88 520 390 Fax: +36 88 520 211

The Americas: Tel: +1-951 781 5500 Fax: +1-951 781-5700

www.bourns.com

## ELECTRICAL SPECIFICATION @25°C:

- OCL (100kHz/0.1V) : 650uH Min(25°C)  
500uH Min (-40°C~+125°C)
- Leakage inductance (100kHz/0.1V): 0.5uH Max.
- DCR: Transformer side : 0.9 Ω Max.  
CM choke side: 1.3 Ω Max.
- Turns Ratio : 1 : 1 ± 2%
- Insertion Loss:  
1-80 MHz: -1.0dB Max.  
125MHz: -3.0dB Max.
- Return Loss ( Z out= 100 Ω ):  
5 MHz: -25dB Min.  
30-80MHz: -16+20LOG<sub>10</sub> (f/30 MHz) dB
- Cross Talk (Between each channel):  
1MHz: -62dB Min.  
5-100MHz: -45+20LOG<sub>10</sub>(f/30 MHz) dB Min.
- Differential To Common Mode Rejection :  
5~200MHz: -50+17LOG<sub>10</sub>(f/5 MHz)dB Min.
- HI-POT (1mA, 60S): 3600VDC or 2500VAC

## GENERAL INFORMATION:

- AEC-Q200 pending
- RoHS compliant
- Compliant to J-STD-020: level 1, no moisture sensitive
- Operation temperature range: - 40°C to +125°C
- Storage temperature range: - 50°C to +125°C
- Product scrap disposal based on the local laws and regulations

## PACKAGING SPECIFICATION AND HOW TO ORDER:

SM91507ALG-E --- Bourns part No. with Tape and reel packaging , 500pcs/reel  
2500pcs/standard box.

**SM91507 ALG - E**

Model  
AEC-Q200 compliant  
RoHS compliant  
TNA code  
Package method code

TITLE  
BMS Transformer/CMC, 16PIN,DUAL,3.6kVDC

Customer Approval

Customer Part No.

Bourns Model No.

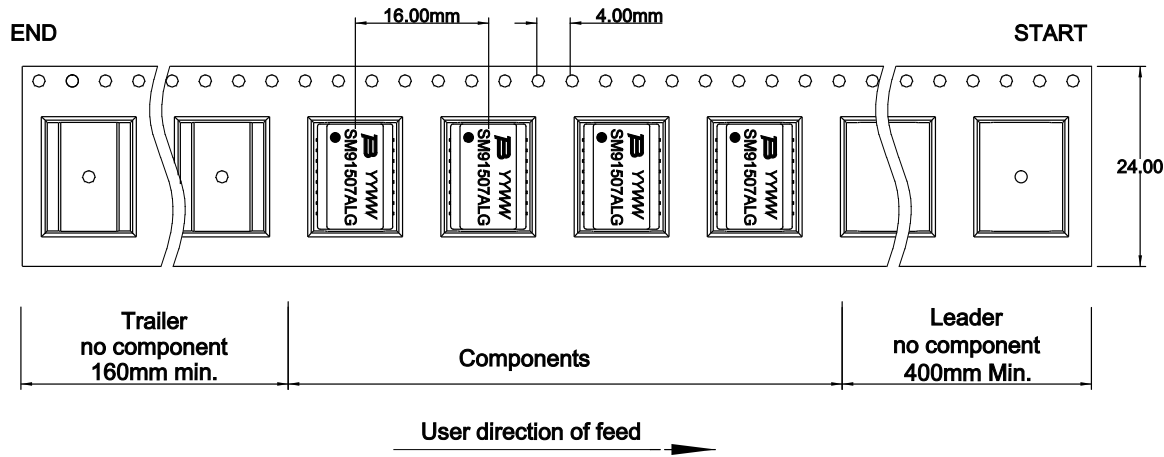
SM91507ALG

No.	DESCRIPTION	DATE	BY	CHK	APPD	UNITS:
X3	1. Used new case, so changed case shape , pin width from 0.3 to 0.46mm.	2018/12/6	Larry Gao	Yummy Lin	Ian Yan	M/M
X2	1.Updated Part No. with package according to new naming rule 2.Added working voltage	2018/10/25	Emily Chen	Yummy Lin	Ian Yan	DWG. NO.
X1	Initial released	2018/09/25	Yummy Lin	Ian Yan	Suker Zeng	DATE
REVISIONS						SHEET 1/3

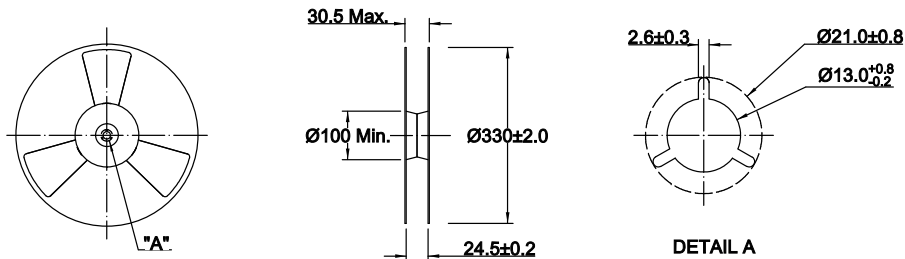
**BOURNS**®

# PACKING INFORMATION:

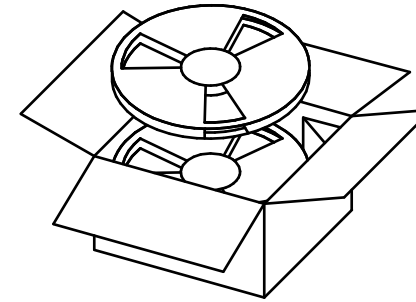
## 1.Configuration:



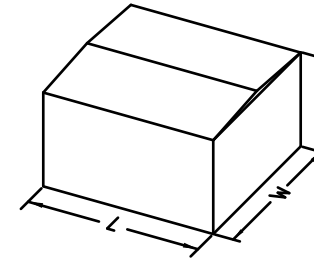
## 2.Reel mechanical dimension:



## 3.Packing Method



Packing : Reel Packing  
 One reel : 500pcs  
 5 reels/standard box : 2500pcs



Package size:  
 355(L)X350(W)X215(H) mm

### Bourns Worldwide Contacts:

Asia-Pacific: Tel: +886-2 2562-4117 Fax: +886-2 2562-4116

EMEA: Tel: +36 88 520 390 Fax: +36 88 520 211

The Americas: Tel: +1-951 781 5500 Fax: +1-951 781-5700

www.bourns.com

TITLE  
 BMS Transformer/CMC, 16PIN,DUAL,3.6kVDC

Customer Approval

Customer Part No.

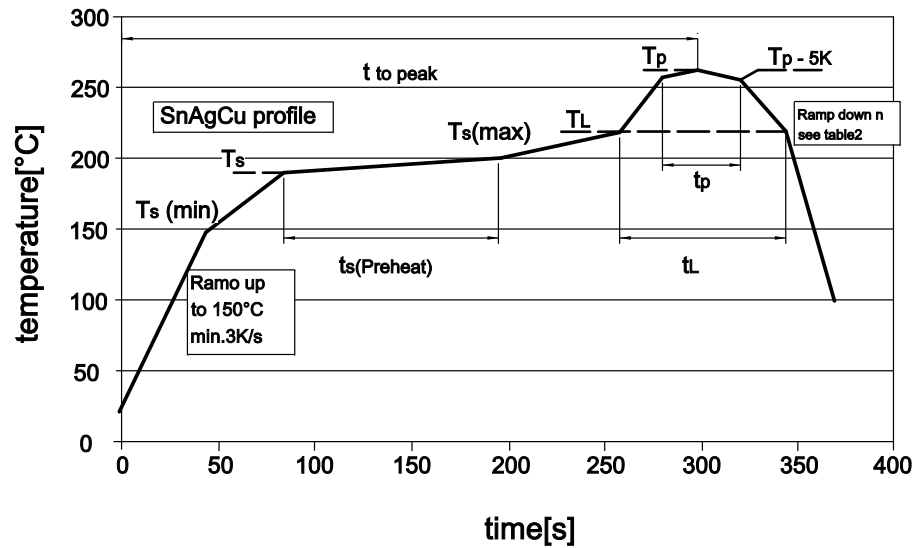
Bourns Model No.

SM91507ALG

No.	DESCRIPTION	DATE	BY	CHK	APPD	UNITS:
X3	1. Used new case, so changed case shape , pin width from 0.3 to 0.46mm.	2018/12/6	Larry Gao	Yummy Lin	Ian Yan	M/M
X2	1.Updated Part No. with package according to new naming rule 2.Added working voltage	2018/10/25	Emily Chen	Yummy Lin	Ian Yan	DSS-SM91507ALG
X1	Initial released	2018/09/25	Yummy Lin	Ian Yan	Suker Zeng	DATE
REVISIONS						2018/09/25
						SHEET 2/3

**BOURNS**®

# IR REFLOW PROFILE:



Profile Features	Class 3a
Preheat	
Ramp-up Rate 20°C to 150°C	Min. 3K/s (average value over 10s)
Soak Temperature (min): Ts (min)	150°C
Soak Temperature : Ts	190°C
Soak Temperature (max): Ts(max)	200°C
Soak Time (Ts to Ts(max)): ts(Preheat)	Min. 110 s
Time between Ts(max) and TL	10~85 s
Peak	
Ramp-up Rate from 200°C to T <sub>peak</sub>	0.5 K/s~3 K/s (average value over 10s)
Liquidus Temperature: TL	217°C
Time above Liquidus Temperature: t <sub>L</sub>	min. 90s
Peak Temperature: T <sub>P</sub>	245 (-0)°C
Time within 5°C of Actual Peak Temperature: T <sub>P</sub> - 5K	min. 30s
Cooling	
Ramp-Down Rate from Peak Temperature	-4 K/s (average value over 10s)
General	
Time to Peak: t <sub>to peak</sub>	min. 300s

\*) for active molded components a different tolerance of (-5 K) is allowed

**Bourns Worldwide Contacts:**

Asia-Pacific: Tel: +886-2 2562-4117 Fax: +886-2 2562-4116

EMEA: Tel: +36 88 520 390 Fax: +36 88 520 211

The Americas: Tel: +1-951 781 5500 Fax: +1-951 781-5700

www.bourns.com

TITLE  
BMS Transformer/CMC, 16PIN,DUAL,3.6kVDC

Customer Approval

Customer Part No.

Bourns Model No.

SM91507ALG



							UNITS:
X3	1. Used new case, so changed case shape , pin width from 0.3 to 0.46mm.	2018/12/6	Larry Gao	Yummy Lin	Ian Yan		M/M
X2	1.Updated Part No. with package according to new naming rule 2.Added working voltage	2018/10/25	Emily Chen	Yummy Lin	Ian Yan		DWG. NO. DSS-SM91507ALG
X1	Initial released	2018/09/25	Yummy Lin	Ian Yan	Suker Zeng		DATE 2018/09/25
No.	DESCRIPTION	DATE	BY	CHK	APPD	REVISIONS	
							SHEET 3/3

单击下面可查看定价，库存，交付和生命周期等信息

[>>Bourns\(伯恩斯\)](#)