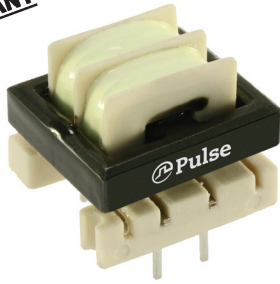






# THT Common Mode Chokes

PA4053.XXXNL



-  Dielectric Strength: 2500Vrms
-  Inductance Range: 0.2mH (at 4A) to 45mH (at 0.15A)
-  Height: 17.78mm Max
-  Footprint: 20.96mm x 17.35mm

## Electrical Specifications @ 25°C - Operating Temperature -40°C to +125°C

Part Number	Inductance (2-3)=(7-6) (mH Min)	Current Rating <sup>1</sup> (2-3)=(7-6) (A)	DCR (2-3)=(7-6) (mΩ Max)	Self Resonant Frequency (2-3)=(7-6) (MHz Min)	Leakage Inductance (2-3 with 7,6 shorted) (uH Max)
PA4053.001NL	45.0	0.15	2750	0.150	580
PA4053.002NL	34.5	0.30	2100	0.200	450
PA4053.003NL	13.7	0.60	850	0.305	190
PA4053.004NL	7.5	0.80	450	0.430	98
PA4053.005NL	6.4	1.0	310	0.375	88
PA4053.006NL	2.1	1.5	135	0.795	32
PA4053.007NL	1.2	2.0	75	1.05	18.5
PA4053.008NL	0.55	3.0	34	1.75	8.0
PA4053.009NL	0.20	4.0	19	2.30	3.5

### Notes:

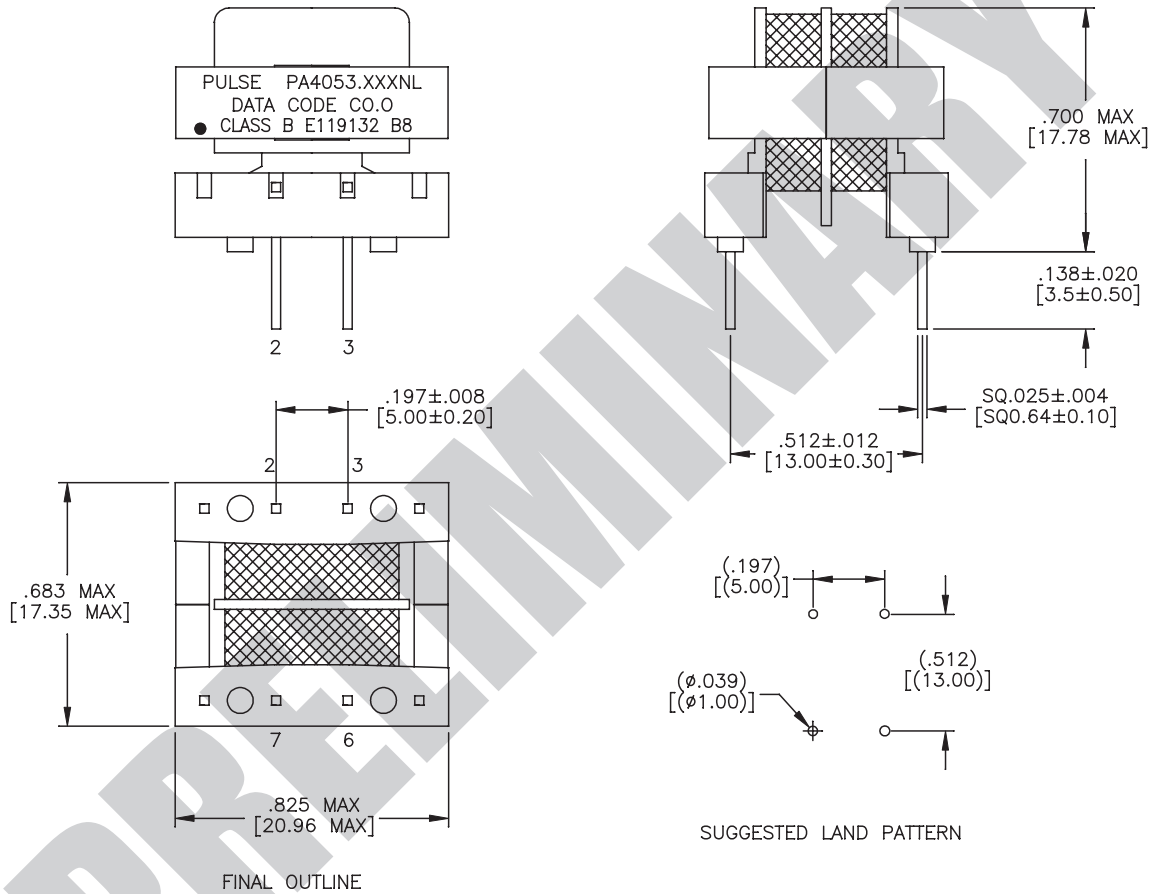
1. The current rating (I<sub>rated</sub>) is based upon the temperature rise of the component and represents the rms current which will cause a typical temperature rise of 40°C.
2. The temperature of the component (ambient plus temperature rise) must be within the stated operating temperature range.

# THT Common Mode Chokes

PA4053.XXXNL

## Mechanical

PA4053.XXXNL



## For More Information

**Pulse Worldwide Headquarters**  
12220 World Trade Drive  
San Diego, CA  
92128  
U.S.A.

**Pulse Europe**  
Zeppelinstrasse 15  
71083 Herrenberg  
Germany

**Pulse China Headquarters**  
B402, Shenzhen Academy of  
Aerospace Technology Bldg.  
10th Kejian Road  
High-Tech Zone  
Nanshan District  
Shenzhen, PR China  
518057  
Tel: 86 755 33966678  
Fax: 86 755 33966700

**Pulse North China**  
Room 2704/2705  
Super Ocean Finance  
Ctr.  
2067 Yan An Road  
West  
Shanghai 200336  
China  
Tel: 86 21 62787060

**Pulse South Asia**  
135 Joo Seng Road  
#03-02  
PM Industrial Bldg.  
Singapore 368363  
Tel: 65 6287 8998  
Fax: 65 6287 8998

**Pulse North Asia**  
3F, No. 198  
Zhongyuan Road  
Zhongli City  
Taoyuan County 320  
Taiwan R. O. C.  
Tel: 886 3 4356768  
Fax: 886 3 4356823  
(Pulse)

Tel: 858 674 8100  
Fax: 858 674 8262

Tel: 49 7032 7806 0  
Fax: 49 7032 7806 12

Performance warranty of products offered on this data sheet is limited to the parameters specified. Data is subject to change without notice. Other brand and product names mentioned herein may be trademarks or registered trademarks of their respective owners. © Copyright, 2014. Pulse Electronics, Inc. All rights reserved.

单击下面可查看定价，库存，交付和生命周期等信息

[>>Pulse\(普思\)](#)