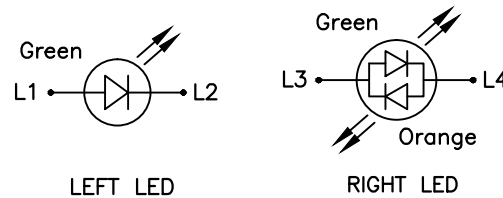
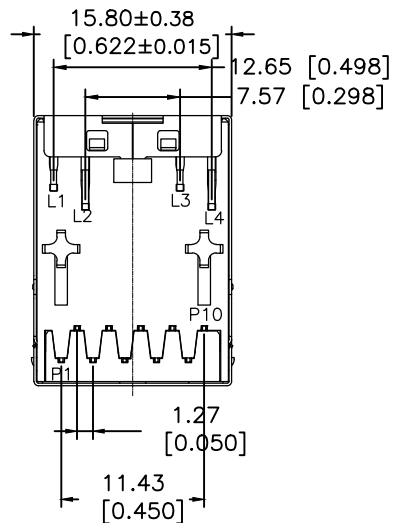
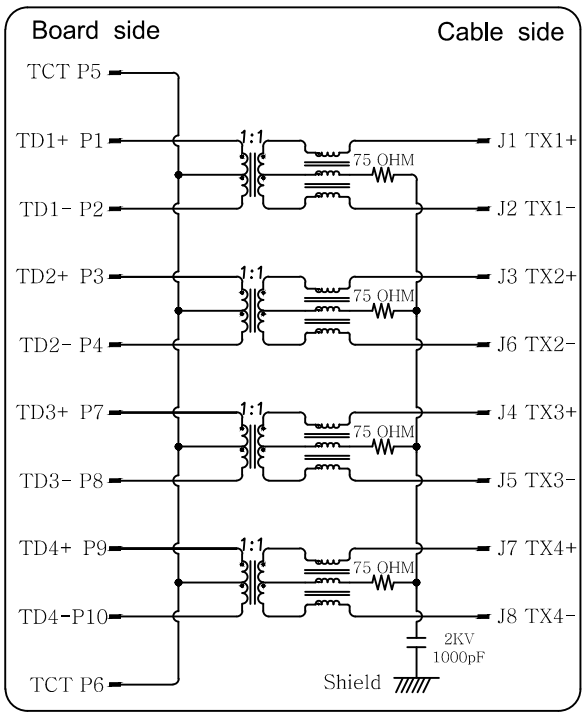


RECOMMENDED PCB LAYOUT
(COMPONENT SIDE VIEW)



Emitting Color	λ_p (nm)	V_f @ $I_f=20\text{mA}$	I_r @ $V_r=5\text{V}$
Green	565	1.7V~2.6V	10 μA max.
Orange	610	1.7V~2.6V	10 μA max.

QUALITY SYMBOLS MAJOR CRITICAL GENERAL TOLERANCES (UNLESS SPECIFIED) X. \pm XXX .X \pm 0.38 .XX \pm 0.20 .XXX \pm XXX ANGLES \pm 1°	DRAWN BY DENG JIANXIANG '180727 DATE	
	CHECKED BY TENG CHANG HO '180727 DATE	
APPROVED BY KUO JUNG HSUN '180727 DATE	UNITS mm	SIZE A4
SCALE 1:1	SHEET NO. 1 OF 2	REV 3
		DWG NO. 31507-XXXXXXX-XXX
		PART NO. SEE NOTES

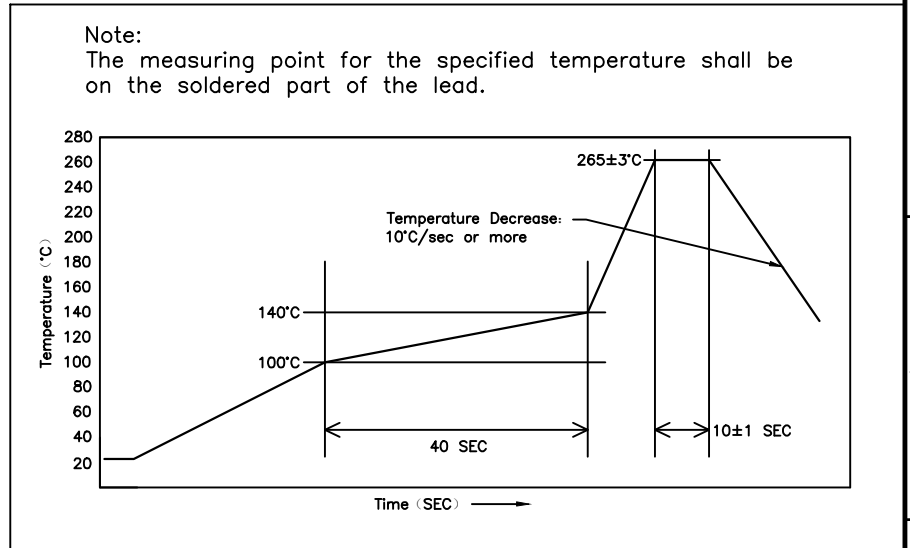


ELECTRICAL CHARACTERISTICS :

1. INSERTION LOSS :
 - 1~100 MHz -1.0dB MAX.
2. RETURN LOSS(LOAD 100Ω) :
 - 1~30 MHz -18dB MIN
 - 30~60 MHz -16dB MIN
 - 60~80 MHz -12dB MIN
 - 80~100 MHz -10dB MIN
3. COMMON MODE REJECTION
 - 1~100 MHz -30dB MIN
4. CROSS TALK
 - 1~100 MHz -30dB MIN
5. INDUCTANCE @ 100KHz, 0.1V, 8mA DC BIAS
 - (P1-P2),(P3-P4),(P7-P8),(P9-P10) : 350 uH MIN
6. DCR
 - (J1-J2),(J3-J6),(J4-J5),(J7-J8) : 1.2 OHM MAX
7. HI-POT TEST
 - BOARD SIDE TO CABLE SIDE : 1500VAC 60S OR 2250VDC 60S
8. TURNS RATION 100KHz
 - (P1-P2) : (J1-J2) = 1:1 ±%3
 - (P3-P4) : (J3-J6) = 1:1 ±%3
 - (P7-P8) : (J4-J5) = 1:1 ±%3
 - (P9-P10) : (J7-J8) = 1:1 ±%3

SPECIFICATIONS :

1. MATERIAL
 - HOUSING : THERMOPLASTIC, UL 94V-0, BLACK
 - MODULE CASE : THERMOPLASTIC, UL 94V-0, BLACK
 - RJ CONTACTS : PHOSPHOR BRONZE
 - PLATING : SELECTIVE GOLD PLATING ON CONTACT AREA, 100u" MIN TIN PLATING ON SOLDER TAILS, 30u" MIN NICKEL OVERALL
 - SOLDER TAIL TERMINAL : BRASS
 - PLATING : 100u" MIN TIN 30u" MIN NICKEL OVERALL
 - SHIELD : STAINLESS, THICKNESS=0.2mm, PRE-SOLDERING
2. RJ45 SPECIFICATIONS
 - INSULATION RESISTANCE : 500 MOHMS MIN
 - INSERTION FORCE WITH THE LATCH DEPRESSED :22N MAX
 - REMOVAL FORCE WITH THE LATCH DEPRESSED :44N MAX
 - DURABILITY :750 CYCLES
3. OPERATING AND STORAGE TEMPERATURE
 - OPERATING TEMPERATURE : -40°C TO +85°C
 - STORAGE TEMPERATURE : -40°C TO +85°C
4. TEMPERATURE CONDITION OF WAVE SOLDERING:



P/N RULE CODE:

31507-A EB AA X 00 I -001

- 001: NORMAL
- PACKING:
 - T: TRAY PACKAGE
 - MECHANICAL SERIES
- PLATING CODE:
 - 1: GOLD FLASH
 - 2: Au 6u"
 - 5: Au 30u"
- CIRCUIT TYPE: 10/100/1000 Base-T
- LED CODE
 - EB: L=GREEN, R=G/O, POLARITY REVERSE
 - A: MODULE+ROHS

QUALITY SYMBOLS MAJOR Ⓢ CRITICAL Ⓢ	DRAWN BY DENG JIANXIANG	DATE '180727	ACES ELECTRONICS
	CHECKED BY TENG CHANG HO	DATE '180727	
GENERAL TOLERANCES (UNLESS SPECIFIED) X ±XXX .X ±0.38 .XX ±0.20 .XXX ±XXX ANGLES ±1°	APPROVED BY KUO JUNG HSUN	DATE '180727	TITLE RJ45 IMC,1000 BASE-T, R/A, W/LED
	UNITS mm	SCALE 1:1	SIZE A4
	SHEET NO. 2 OF 2	REV 3	PART NO. SEE NOTES

单击下面可查看定价，库存，交付和生命周期等信息

[>>ACES\(宏致\)](#)