

# CME-CSCF4532B



## Features

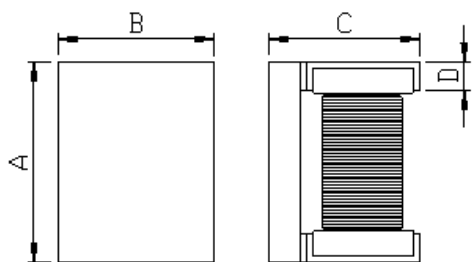
- ▶ High common mode impedance at high frequency effects  
Excellent noise suppression performance.
- ▶ Realizes small size and low profile.
- ▶ High reliability test meet AEC-Q200

## Applications

- ▶ CAN-BUS, FAXs, modems, ISDNs, etc.

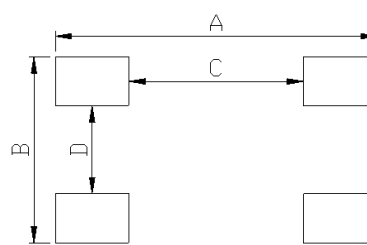


Dimension (Unit:mm)



A	B	C	D
4.5±0.2	3.2±0.2	2.8±0.2	0.7±0.1

Land Pattern (Unit:mm)



A	B	C	D
5.9	3.4	3.2	1.6

## Specifications

Part Number	Inductance (μH)	Impedance (Ω) Min.(Typ.)	DCR (Ω) Max.	IDC1 (mA) Max.	Insulation Resistance (MΩ) Min.	Rated Voltage (V) Max.
CME-CSCF4532B-110T25	11	300(600)	0.6	250	10	50
CME-CSCF4532B-220T20	22	500(1200)	1.0	200	10	50
CME-CSCF4532B-510T20	51	1000(2800)	1.0	200	10	50
CME-CSCF4532B-101T15	100	2000(5800)	2.0	150	10	50

- Inductance test condition : 100 kHz ( L tolerance+50/-30% )
- Impedance test condition : 10 MHz
- Operating Temperature Range(including self temperature) : -40°c ~ +150 °c

Ilsan Sales Office (KOREA)  
H.K Sales Office (HONGKONG)  
Shenzhen Sales Office (CHINA)  
LA Sales Office (USA)  
Hungary Sales office (EUROPE)

+82)31-904-1444  
+852)2711-5551  
+86)755-8663-6929  
+1)866-446-3586  
+36)30-913-7706

[coilmaster@coilmaster.com](mailto:coilmaster@coilmaster.com)  
[coilmaster@coilmaster.com](mailto:coilmaster@coilmaster.com)  
[coilmaster@coilmaster.com](mailto:coilmaster@coilmaster.com)  
[coilmaster@coilmaster.com](mailto:coilmaster@coilmaster.com)  
[coilmaster@coilmaster.com](mailto:coilmaster@coilmaster.com)

- All specifications are subject to change without notice.
- Update date : 2015.11.18

[www.coilmaster.com](http://www.coilmaster.com)

单击下面可查看定价，库存，交付和生命周期等信息

[>>coilmaster\(卡尔马斯特\)](#)