

## YOM/1006——1A 60V Opto-MOS

### 概述 Features

- 交直流通用 AC&DC load
- 负载电流至1A Load current up to 1A
- 击穿电压60V Breakdown voltage 60V
- 介质耐压5000V Dielectric strength 5000V
- 符合RoHS RoHS compliant

### 获得认证 Agency approvals

- UL - E481250
- cUL - E481250

### 应用 Applications

- 高速检测设备 High-speed inspection machines
- 程控交换设备 Telephone equipment
- 计算机 Computer

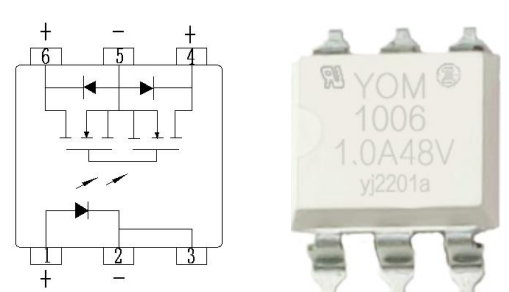
### 打印标志 Marking information

Part number	Package	Marking
YOM/1006S	SMD6	YOM 1006

### 极限值 Absolute maximum ratings

特性参数/Parameter		符号/Symbol	测试条件/Test condition	最小值/Min.	典型值/Typ.	最大值/Max.	单位/Unit
输入端/Input	LED 反向电压/LED reverse voltage	$V_R$		6			V
	LED 正向电流/LED forward current	$I_F$				50	mA
	功耗/Power dissipation	$P_{in}$				50	mW
输出端/Output	击穿电压/Breakdown voltage	$BV_{DSS}$		60			V
	功耗/Power dissipation	$P_{out}$				800	mW
	额定电流/On-state current	$I_L$				1	A
	峰值电流/Peak current	$I_{peak}$	A connection: 100ms (1 shot), VL=DC		1.8		A
介质耐压/I/O Dielectric strength *		$V_{ISO}$	$I_{ISO} \leq 0.3mA$	5000			$V_{rms}$
工作温度/Operating temperature		$T_{opr}$		-30		85	°C
储存温度/Storage temperature		$T_{stg}$		-40		125	°C

“\*”：RH=40 to 60%, T=20~30°C, AC for 1minute.



(Ta=25°C)

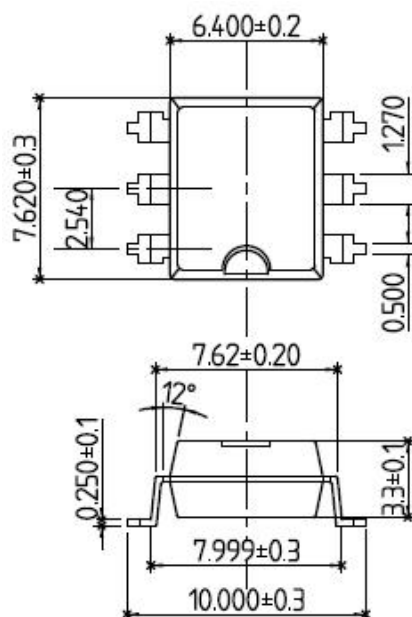
## 电参数 Electrical parameters

(Ta=25℃)

特性参数/Parameter		符号 /Symbol	测试条件 /Test condition	最小 值 /Min.	典型值 /Typ.	最大值 /Max.	单位 /Unit
输入端/Input	LED 正向电压/LED forward voltage	$V_F$	$I_F=10mA$		1.2	1.3	V
	LED 反向电流/LED reverse current	$I_R$	$V_R=5V$			10	$\mu A$
输出端/Output	断态泄漏电流 /Output off-state leakage current	$I_{Leak}$	$V_o=60V$			10	$\mu A$
耦合特性 /Transfer characteristics	LED 触发电流/LED trigger current	$I_{Fr}$			3	8	mA
	推荐的工作电流 /Recommend operating current	$I_{in}$		10		18	mA
	导通电阻/Output on-state resistance	$R_{on}$	$I_{in}=10mA, I_D=1A$			0.2	$\Omega$
	导通时间/Turn on time	$T_{on}$	$I_{in}=10mA, I_D=1A$			4	ms
	关断时间/Turn off time	$T_{off}$	$I_{in}=10mA, I_D=1A$			4	ms
	电容/I/O capacitance	$C$					10

## 外形尺寸 Outline dimension :mm

### 1、SMD6



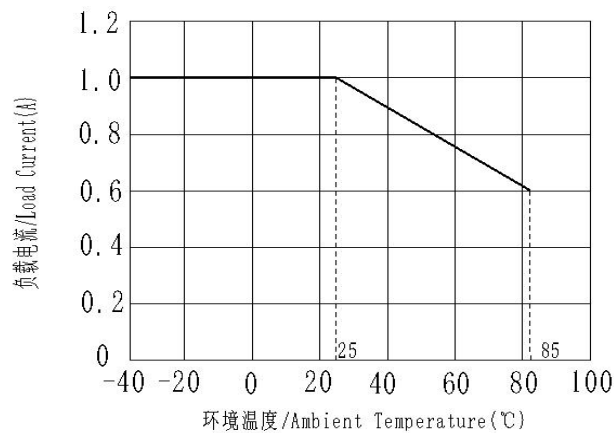
## 订货信息 Ordering information

订货信息/Ordering information						
	Y	OM	B/	100	6	S
公司商标代号 Company symbol						
MOS 直流输出 SSR: MOS DC Output SSR						
常开型 N.O.: 默认 Nil 常闭型 N.C.: B						
负载电流 Load current: 100-1A						
击穿电压 $BV_{DSS}$ : 6-60V						
S: SMD						

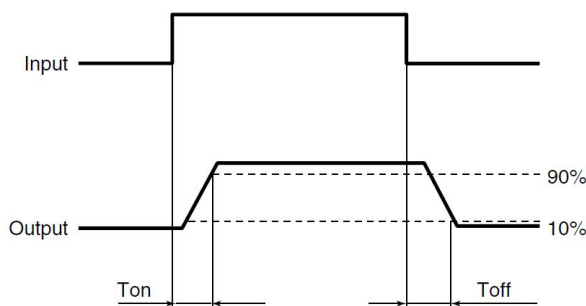
## 特性曲线 Characteristic data

### 1. 负载电流与环境温度关系曲线

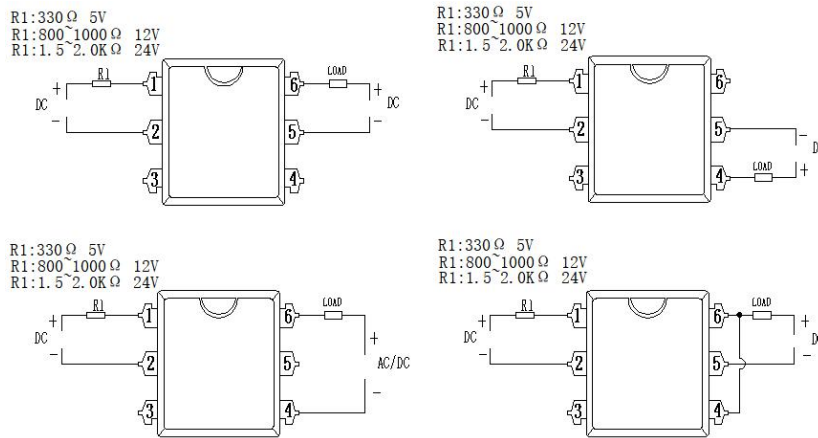
Load current VS. ambient temperature



## 接通和关断时间关系 Turn on and turn off time



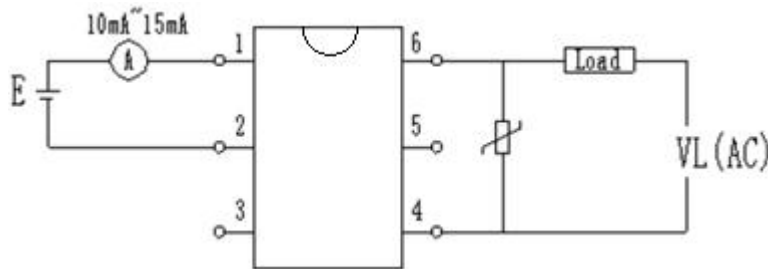
## 接线图 Wiring diagram



## 推荐使用的条件 Recommended driving condition

请确保输入电流大于 10mA，推荐输入电流为 15mA。请参考下图：

Please make sure the input current more 10mA, Recommending input current 15mA.



## 注意事项 Notes

a) 工作环境温度超过 25℃时请降额使用。参见特性曲线。

When ambient temperature is above 25℃, the load current must be reduced. (see characteristic data)

b) 继电器接线时，务必保证输入端极性的正确，以免损坏继电器。

Ensuring the polarity is correct when connecting the input lines, otherwise the wrong connection will damage the relay.

## 关于防静电对策 Cautions for static electricity

a. 操作 MOS 输出继电器的作业人员，请穿戴防静电工作服，通过 500kΩ~1MΩ 左右的保护电阻，实施人体接地。

a. Employees handling relays should wear anti-static clothes and should be grounded through protective resistance of 500kΩ to 1MΩ.

b. 请在作业台上装有导电性的金属板或具有防静电的专用板，并对测量仪器和治具等实施接地。

b. A conductive metal sheet should be placed over the work table. Measuring instruments and jigs should be grounded.

- 
- c. 使用电烙铁时，对电烙铁前端进行接地。（建议使用低电压用的电烙铁。）  
c. When using soldering irons, either use irons with low leakage current, or ground the tip of the soldering iron. (Use of low-voltage soldering irons is also recommended.)
- d. 组装时使用的设备等也应正确地接地。  
d. Devices and equipment used in assembly should also be grounded.
- e. 对印刷电路板和机器进行包装时，请避免使用发泡苯乙烯、聚乙烯等带电性的高分子材料。  
e. When packing printed circuit boards and equipment, avoid using high-polymer materials such as foam styrene, plastic, and other materials which carry an electrostatic charge.
- f. 对 MOS 输出继电器进行储存和搬运时，请在不易产生静电的环境(例如湿度 45~60%)中通过导电性包装材料进行保护。  
f. When storing or transporting relays, the environment should not be conducive to generating static electricity (for instance, the humidity should be between 45 and 60%), and relays should be protected using conductive packing materials.

单击下面可查看定价，库存，交付和生命周期等信息

[>>Silicon Billion\(硅兆\)](#)