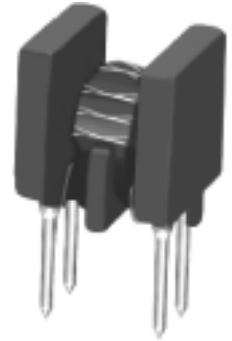
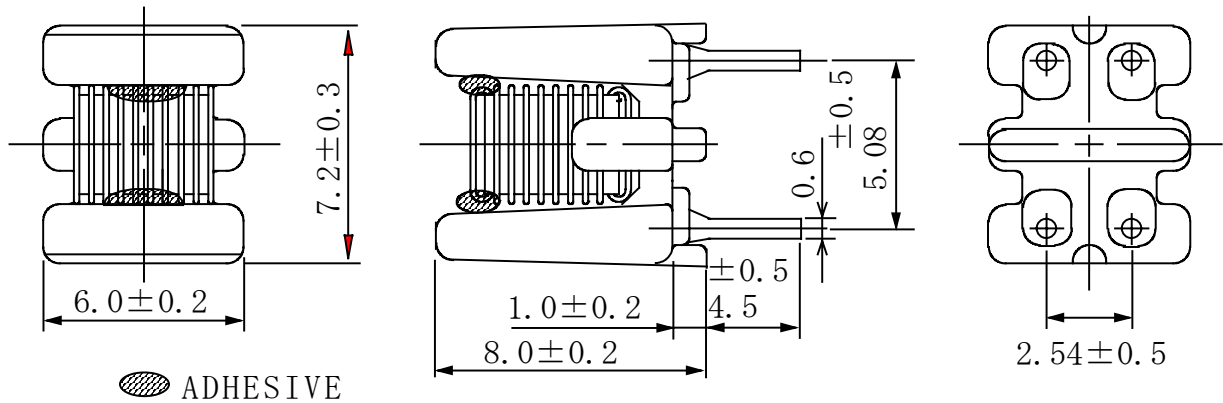


**Type: SFC68**
**◆ Product Description**

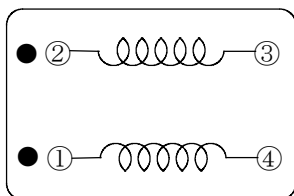
- 7.5×6.2mm Max.(L×W), 8.2mm Max. Height .
- Inductance Range: 5.3  $\mu$  H~28.2  $\mu$  H
- Rated current range: 0.6~2.9A
- In addition to the standard versions of parameters shown here, custom designs are available to meet your exact requirements.


**◆ Feature**

- Ideally used as signal noise filter common mode chokes for I/O port of PC,micro-computer,and related terminal equipment of better characteristics in high frequency range.
- RoHS Compliance

**◆ Dimensions (mm)**


- \* Dimension does not include solder used on coil.
- \* Terminal pitch is measured at the base(not from tip of the pin)

**◆ Schematics (Bottom)**


● MARKING OF POLARITY

**Type: SFC68**
**◆ Specification**

Part name	Stamp	Inductance at 1 MHz ( $\mu$ H) 〔 1-4 〕 〔 2-3 〕	Impedance ( $\Omega$ ) MIN. 〔 1-4 〕 〔 2-3 〕		D.C.R. (m $\Omega$ ) <TYP.>	Rated Current (A)※1	Insulation Resistance (Coil-coil) D.C.250V (M $\Omega$ ) MIN.
SFC68NP-PN08	P08	5.3	1100 (80MHz~ 100MHz)	200 (10MHz)	67.5	1.05	10
SFC68NP-PN10	P10	8.0	1200 (80MHz~ 100MHz)	350 (10MHz)	82.5	0.82	10
SFC68NP-PN12	P12	11.5	1050 (80MHz~ 100MHz)	550 (10MHz)	100.5	0.68	10
SFC68NP-PN14	P14	15.7	650 (80MHz~ 100MHz)	750 (10MHz)	114.0	0.60	10
SFC68NP-WN08	W08	39.5	850 (30MHz~ 100MHz)	650 (10MHz)	64.9	1.30	10
SFC68NP-WN10	W10	60.7	1050 (30MHz~ 100MHz)	1050 (10MHz)	80.0	1.15	10
SFC68NP-WN12	W12	87.5	1100 (30MHz~ 100MHz)	1500 (10MHz)	94.5	1.08	10
SFC68NP-WN14	W14	121.5	1100 (30MHz~ 100MHz)	2100 (10MHz)	110.0	0.95	10
SFC68NP-WNB04	B04	4.3	110 (10MHz) 200 (100MHz)	150(30MHz) 250(300MHz)	19.5	2.90	10
SFC68NP-WNB06	B06	9.5	250 (10MHz) 500 (100MHz)	400(30MHz) 300(300MHz)	25.5	1.80	10
SFC68NP-WNB08	B08	17.2	450 (10MHz) 700 (100MHz)	750(30MHz) 300(300MHz)	33.5	1.50	10
SFC68NP-WNB10	B10	28.2	750 (10MHz) 800 (100MHz)	1150(30MHz) 250(300MHz)	41.5	1.05	10

※1. Rated current: The DC current at which the temperature rise is  $\Delta t=40^{\circ}\text{C}$ . ( $T_a=20^{\circ}\text{C}$ ).

单击下面可查看定价，库存，交付和生命周期等信息

[>>Sumida Corporation\(胜美达\)](#)