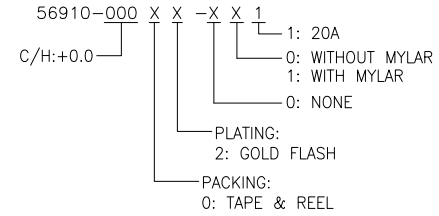
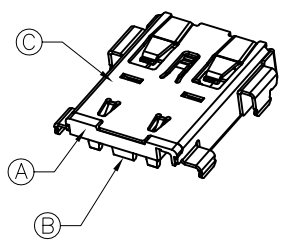
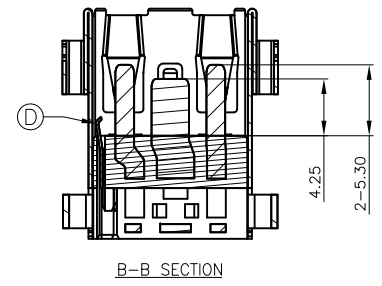
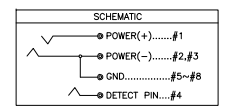
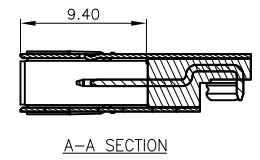
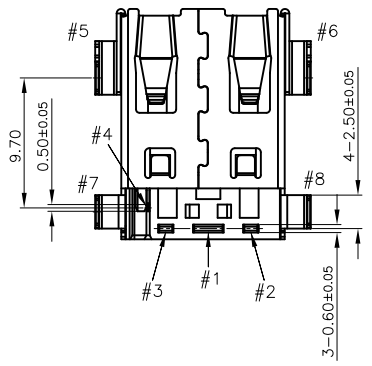
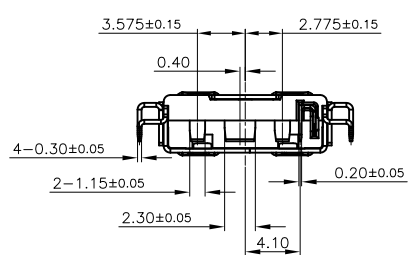
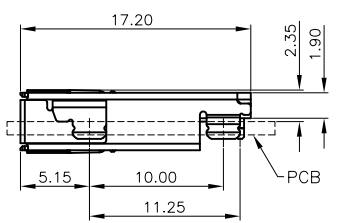
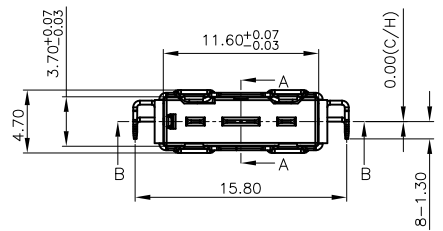


RECOMMENDED PCB LAYOUT (TOP VIEW)
(TOLERANCE=±0.05mm ; THICKNESS=0.8~1.2t)

- NOTES:
1. MATERIAL: SEE TABLE
 2. PLATING:
CONTACT: NI 50u" MIN. UNDERPLATING OVER ALL, GOLD FLASH ON CONTACT AREA, MATT-TIN 60u" ON SOLDER AREA.
SHELL: NICKEL PLATED 60u"MIN.
 3. ELECTRICAL CHARACTERISTICS:
3-1.RATING: DC 20V/20A (OVER AMBIENT ΔT: 30°C MAX.)
3-2.CONTACT: RESISTANCE: 10mΩ MAX.(INITIAL)
15mΩ MAX.(AFTER LIFT TEST)
3-3.DIELECTRIC WITHSTANDING VOLTAGE: 500V AC FOR ONE MINUTE.
3-4.INSULATION RESISTANCE: 100MΩ MIN. MEASURED BY 500V DC.
 4. MATING / UNMATING FORCE:
INITIAL: 0.8~3.5 KG
AFTER: 0.6~3.5 KG
 5. LIFT TEST: 8000 CYCLES.
 6. SPEC. PLS. REFER TO SPEC-56910-XXXX-XX1
 7. PACKAGE PLS. REFER TO 56910-000XX-XXX-PCK
 8. PART NUMBER:



9. DATE CODE:
YEAR: 0=2010 (0~9), 2020=A (B.C.D.....)
MONTH: A(JAN), B(FEB).....
DAY: 08=8TH
T=MADE IN TAIWAN
D=MADE IN DONGGUAN
E=MADE IN KUNSHAN-YANGTZE
K=MADE IN KUNSHAN-QINGYANG
G=MADE IN CHONGQING

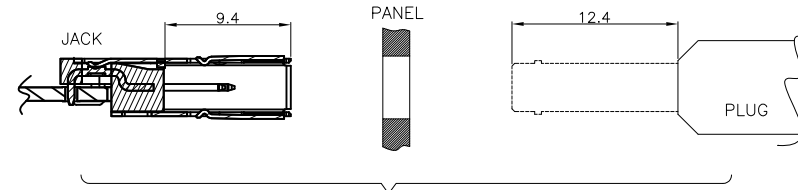
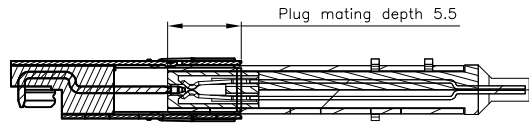


P/N	PIN DEFINE
#1	POWER (+)
#2,#3	POWER (-)
#4	DETECT PIN
#5~#8	GND

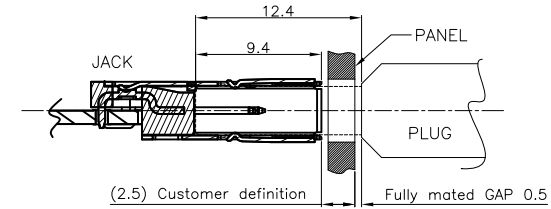
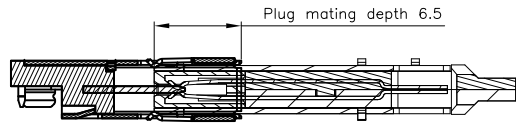
NO	DESCRIPTION	Q'TY	MATERIAL	PLATING & COLOR
D	DETECT PIN	1	SUS304-1/2H, 0.20t	SEE NOTES.
C	SHELL	1	SUS304-1/4H, 0.30t	SEE NOTES.
B	CONTACT	3	C18400, 0.60t	SEE NOTES.
A	HOUSING	1	PA9T+45%GF, UL94V-0	BLACK

QUALITY SYMBOLS MAJOR Ⓜ CRITICAL Ⓢ GENERAL TOLERANCES (UNLESS SPECIFIED) X. ±0.5 .X ±0.25 .XX ±0.15 .XXX ±0.1 ANGLES ±2°	DRAWN BY Ko, meng hsun CHECKED BY Chang, chun te APPROVED BY Kuo, rong hsun	DATE 21/06/08 DATE 21/06/08 DATE 21/06/08	 BOXING POWER JACK 400W (CH : +0.00)
	UNITS mm SCALE -:-	 SHEET NO. 1 OF 2	

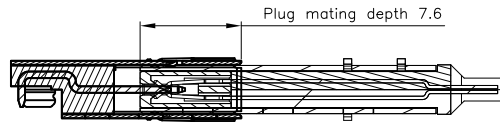
1. GROUND CONTACT STATUS



2. POWER (-) CONTACT STATUS



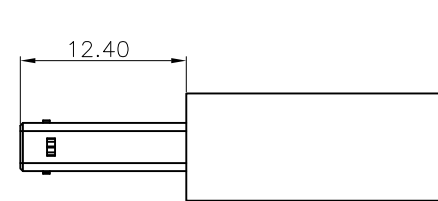
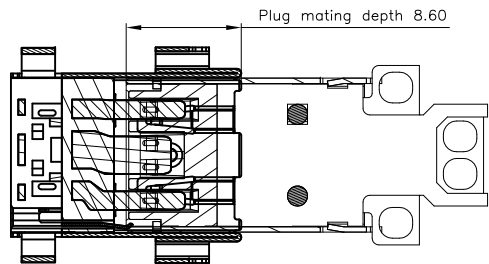
3. POWER (+) CONTACT STATUS



Example :
Plug Length 12.4 - Jack Mating depth 9.4 - Customer definition 2.5 = GAP 0.5

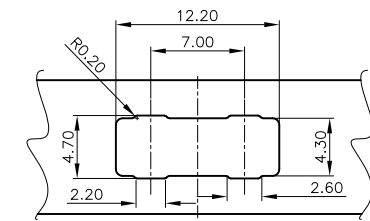
REFERENCE MATING DRAWING

4. DETECT CONTACT STATUS



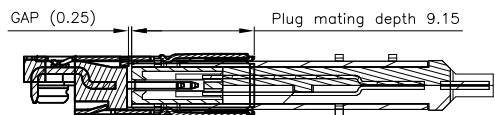
RECOMMENDED MATING PLUG
 (ACES 56911-00622-001)

REFERENCE OVERMOLDING DRAWING



RECOMMENDED PANEL
 (TOLERANCE=±0.05mm)

5. LOCKED STATUS



QUALITY SYMBOLS MAJOR Ⓜ CRITICAL Ⓢ GENERAL TOLERANCES (UNLESS SPECIFIED) X. ±0.5 .X ±0.25 .XX ±0.15 .XXX ±0.1 ANGLES ±2°	DRAWN BY Ko, meng hsun	DATE 21/06/08	
	CHECKED BY Chang, chun te	DATE 21/06/08	
	APPROVED BY Kuo, rong hsun	DATE 21/06/08	SIZE A4
	UNITS mm		RFG NO. ---
	SCALE - : -	SHEET NO. 2 OF 2	REV D
			DWG NO. 56910-000XX-XX1

单击下面可查看定价，库存，交付和生命周期等信息

[>>ACES\(宏致\)](#)