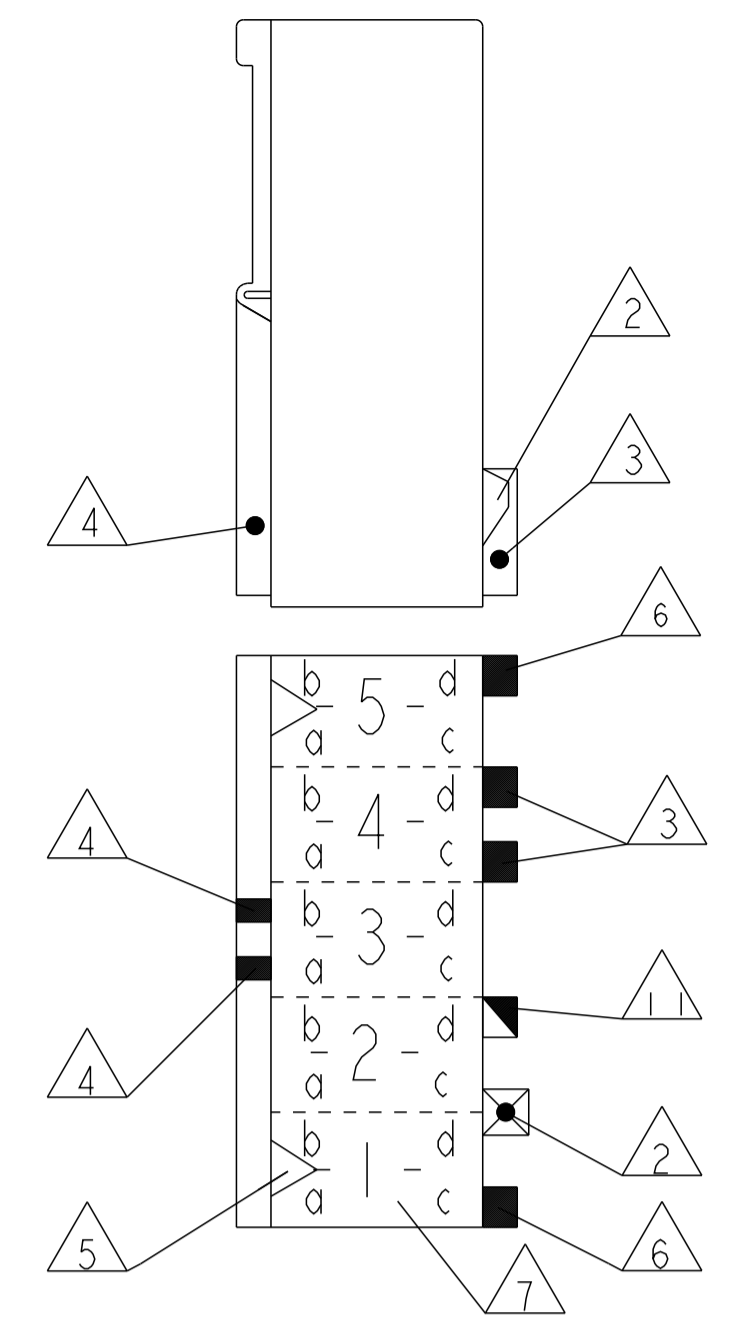
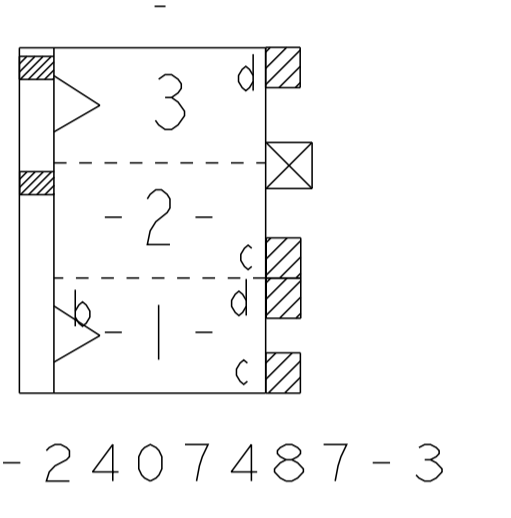
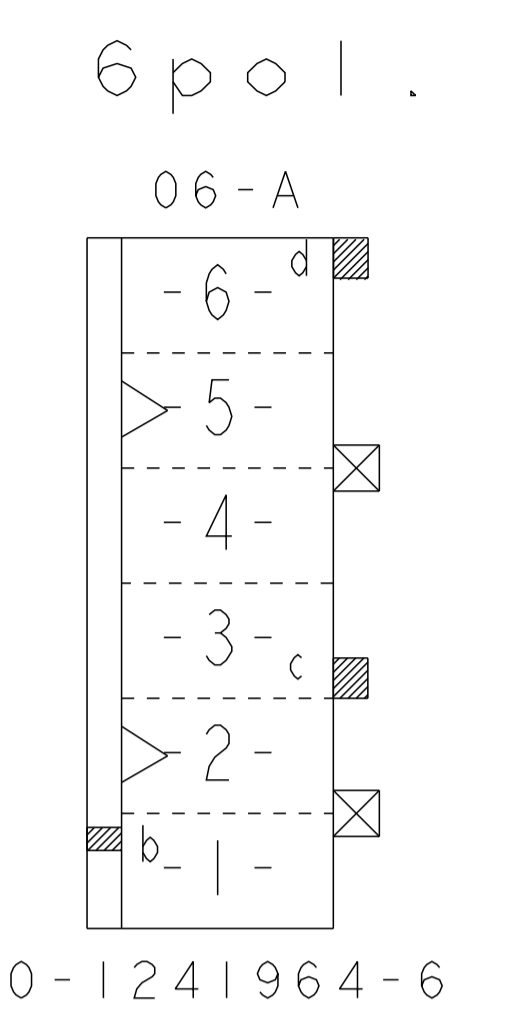
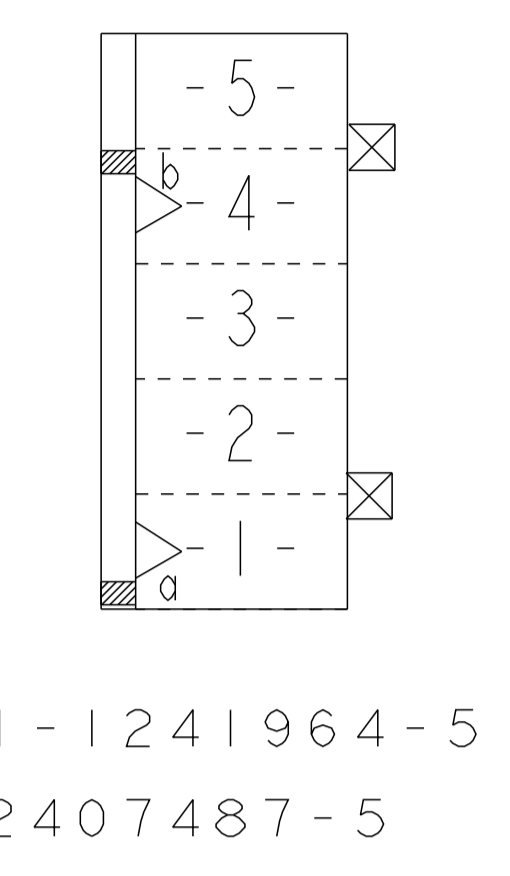
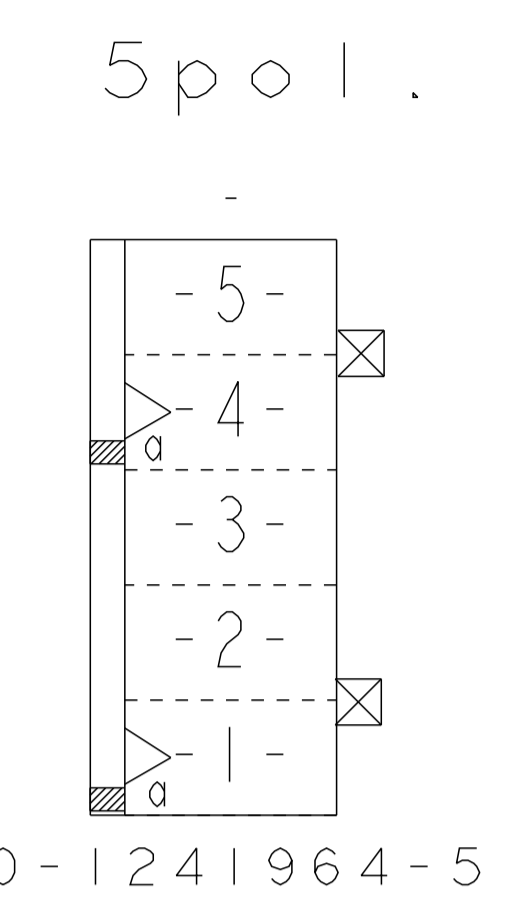
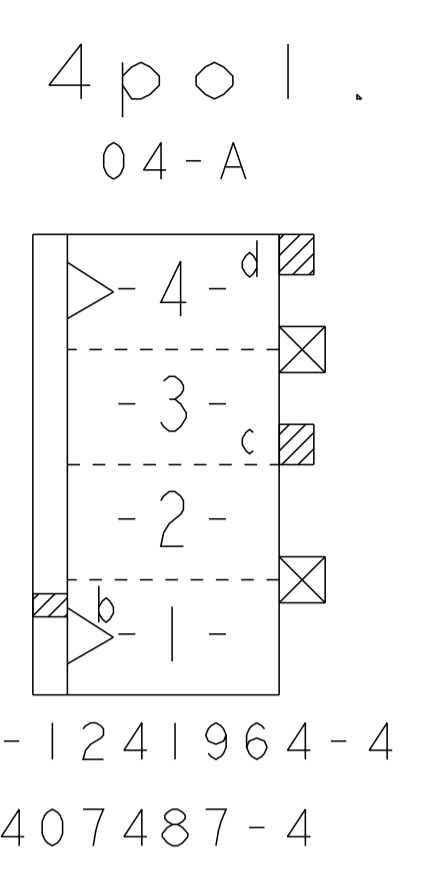
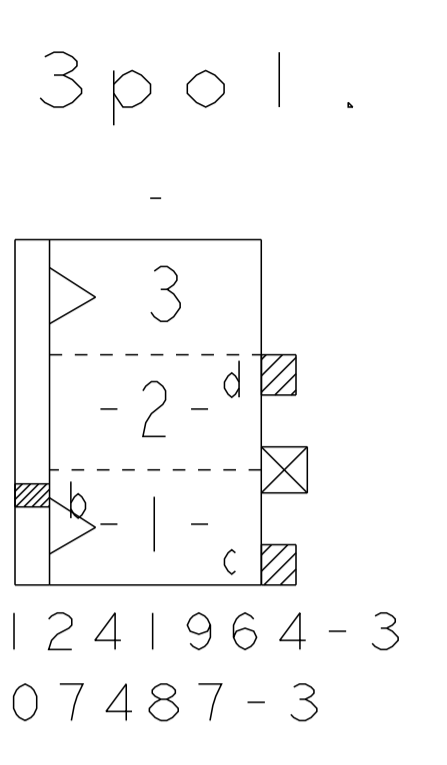
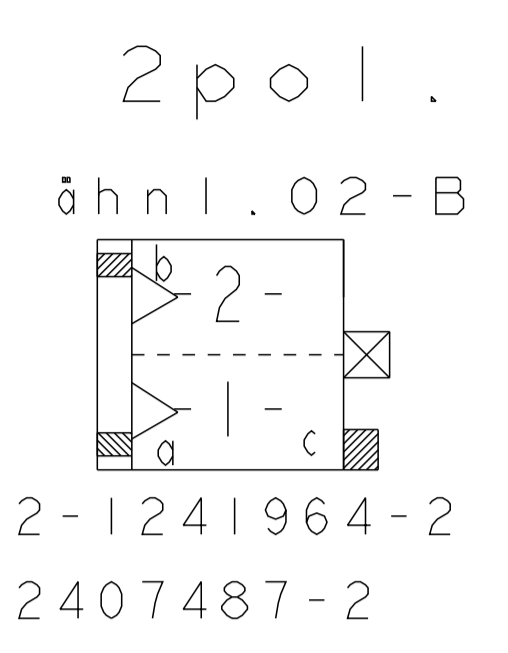


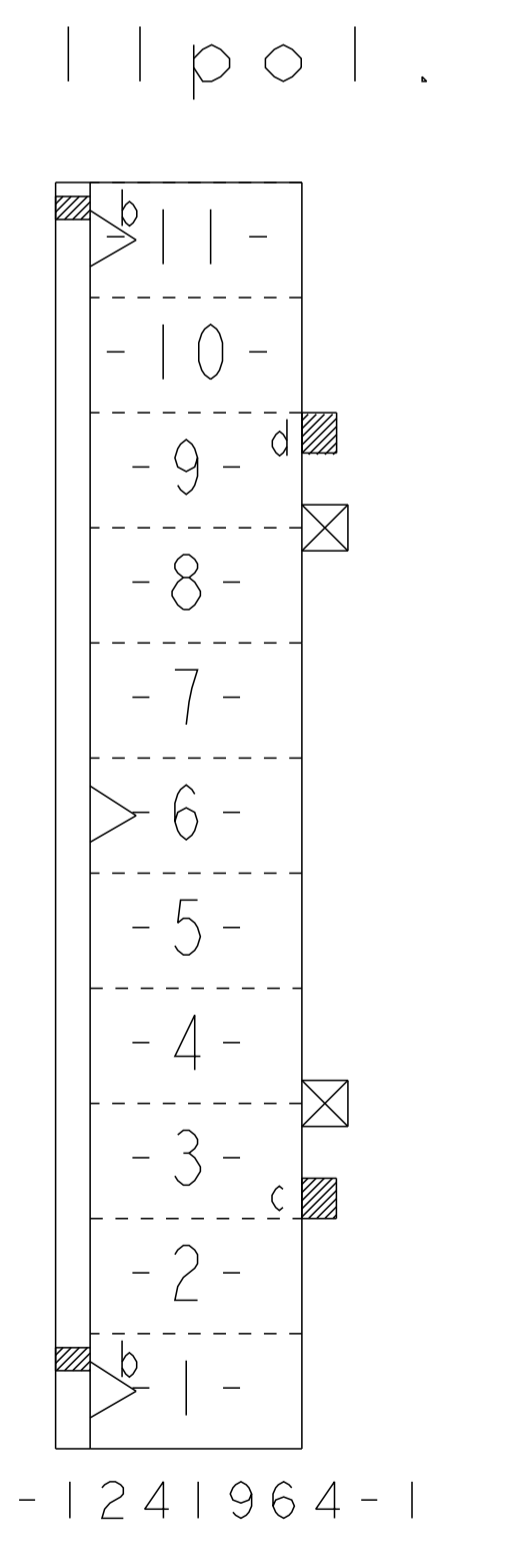
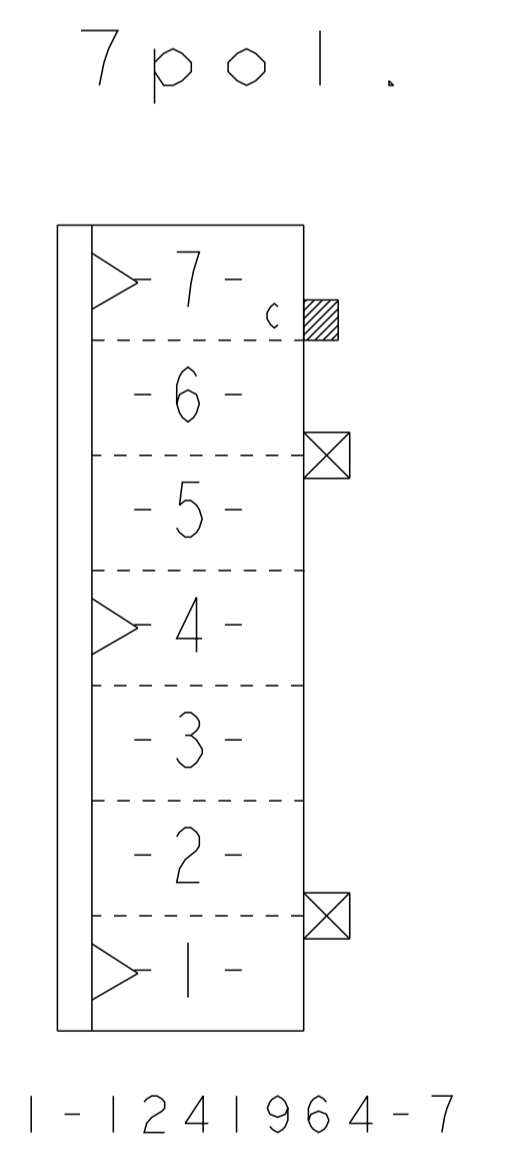
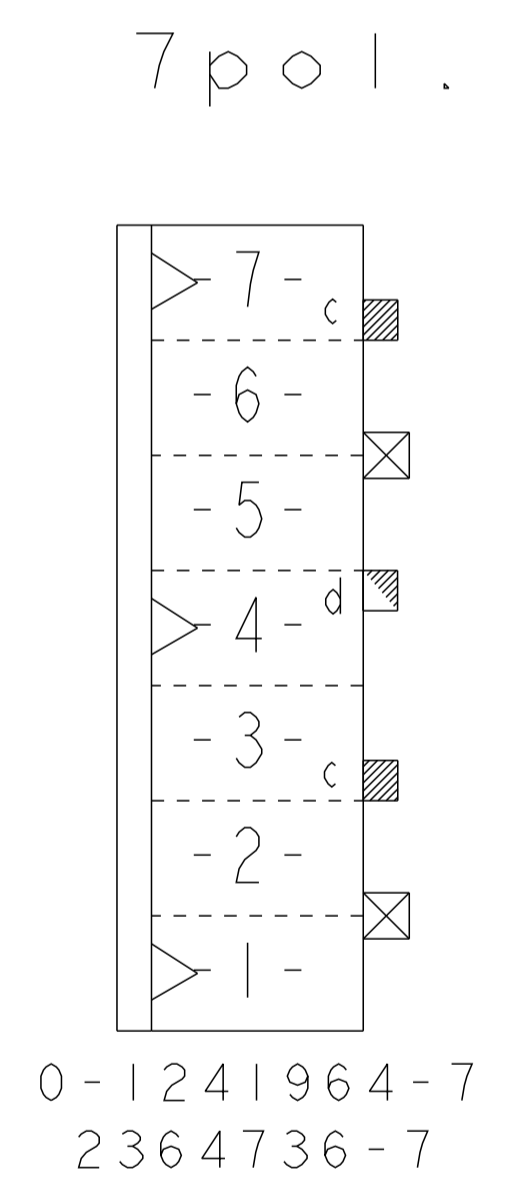
REVISIONS				
P.	LTN	DESCRIPTION	DATE	APPD
-	-	SEE SHEET 1	-	-



Darstellung:
Lage der Kodier- und
Polarisierungsrippen und
Rastfedern am Gehäuse

DESCRIPTION:
POSITION OF KEYING RIB AND THE
LOCKING LATCH AT THE HOUSINGS

TE PART NUMBER (OPTIONAL)



TE PART NUMBER (OPTIONAL)	POS.	DIM A	DIM B	COLOUR	MATERIAL	MATED WITH	
2407487-5	5	25	20	NATURE/natur	PA66 Δ UL94-V0 & GWEPT 750°C n.f.	Δ Δ	
2407487-4	4	20	15	NATURE/natur		Δ Δ	
1-2407487-3	3	15	10	NATURE/natur		Δ Δ	
2407487-3	3	15	10	NATURE/natur		Δ Δ	
2407487-2	2	10	5	NATURE/natur		Δ Δ	
2364736-7	7	35	30	BLUE	PA66 Δ Δ UL94-V0 & GWEPT 750°C n.f.	Δ Δ	
1-1241964-1	11	55	50	NATURE/natur	PAG UL94V-2	Δ Δ	
1-1241964-7	7	35	30	NATURE/natur		Δ Δ	
0-1241964-7	7	35	30	NATURE/natur		Δ Δ	
0-1241964-6	6	30	25	NATURE/natur		Δ Δ	
1-1241964-5	5	25	20	NATURE/natur		Δ Δ	
0-1241964-5	5	25	20	NATURE/natur		Δ Δ	
0-1241964-4	4	20	15	NATURE/natur		Δ Δ	
0-1241964-3	3	15	10	NATURE/natur		Δ Δ	
2-1241964-2	2	10	5	NATURE/natur		Δ Δ	
Bestell-Nr./ähnl.	Maß A	Maß B	Farbe	Materi		Gegenstecker	Δ
PART NO.	POS.	DIM A	DIM B	COLOUR		MATERIAL	MATED WITH Δ

Stückliste/PARTS LIST

THIS DRAWING IS A CONTROLLED DOCUMENT.

DWG: Manke, B 28-NOV-02
 CHK: Stredak, F 28-NOV-02
 APD: Bleicher, M 30-NOV-02

DIMENSIONS: mm
 TOLERANCES UNLESS OTHERWISE SPECIFIED:
 0 PLC ±0.2 mm
 1 PLC ±0.2 mm
 2 PLC ±0.2 mm
 3 PLC ±0.2 mm
 4 PLC ±0.2 mm
 ANGLES ±1°
 FINISH: -

MATERIAL: SEE SHEET 2/2
 WEIGHT: -
 CUSTOMER DRAWING: -

NAME: 2-11 POS. STANDARD-TIMER HOUSING WITH INTERIOR LOCKING, PITCH 5mm
 SIZE: 108-18049-1
 CAGE CODE: 00779
 DRAWING NO: 1241964
 RESTRICTED TO: -

SCALE: 1:1
 SHEET: 2 OF 2
 REV: A23

STE TE Connectivity

单击下面可查看定价，库存，交付和生命周期等信息

[>>TE Connectivity\(泰科\)](#)