

LBTN1100Y3T1G

S-LBTN1100Y3T1G

NPN power transistors

1. FEATURES

- Low saturation voltage
- We declare that the material of product compliance with RoHS requirements and Halogen Free.
- S- prefix for automotive and other applications requiring unique site and control change requirements; AEC-Q101 qualified and PPAP capable.

2. APPLICATIONS

- Load management functions
- Solenoid, relay and actuator drivers
- DC-DC modules

3. DEVICE MARKING AND ORDERING INFORMATION

Device	Marking	Shipping
LBTN1100Y3T1G	T	1000/Tape&Reel
S-LBTN1100Y3T1G	T	1000/Tape&Reel

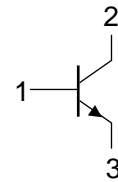
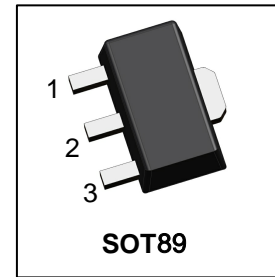
4. MAXIMUM RATINGS(T_a = 25°C)

Parameter	Symbol	Limits	Unit
Collector–Emitter Voltage	V _{CEO}	100	V
Collector–Base Voltage	V _{CBO}	100	V
Emitter–Base Voltage	V _{EBO}	5	V
Collector Current	I _C	1	A
Peak Collector Current (t _p ≤ 1 ms)	I _{CM}	2	A
Base Current	I _B	0.3	A
Peak Base Current (t _p ≤ 1 ms)	I _{BM}	0.3	A
Junction and Storage temperature	T _J , T _{stg}	-55~+150	°C

5. THERMAL CHARACTERISTICS

Parameter	Symbol	Limits	Unit
Total Device Dissipation, FR-4 Board (Note 1) @ T _A = 25°C Derate above 25°C	PD	550 4.4	mW mW/°C
Thermal Resistance, Junction–to–Ambient	R _{θJA}	225	°C/W

1.PCB Size:30.0mm×25.0mm×1.6mm,FR-4 Board;

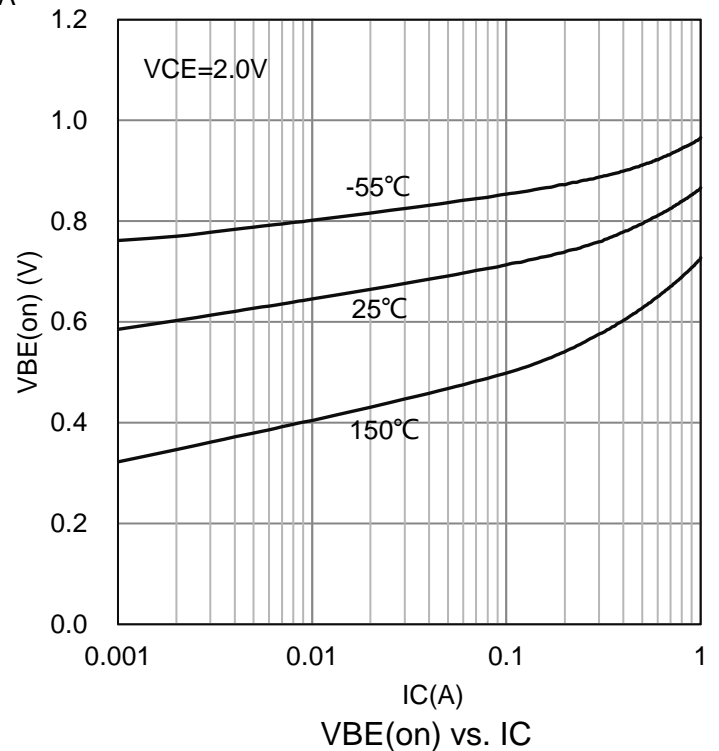
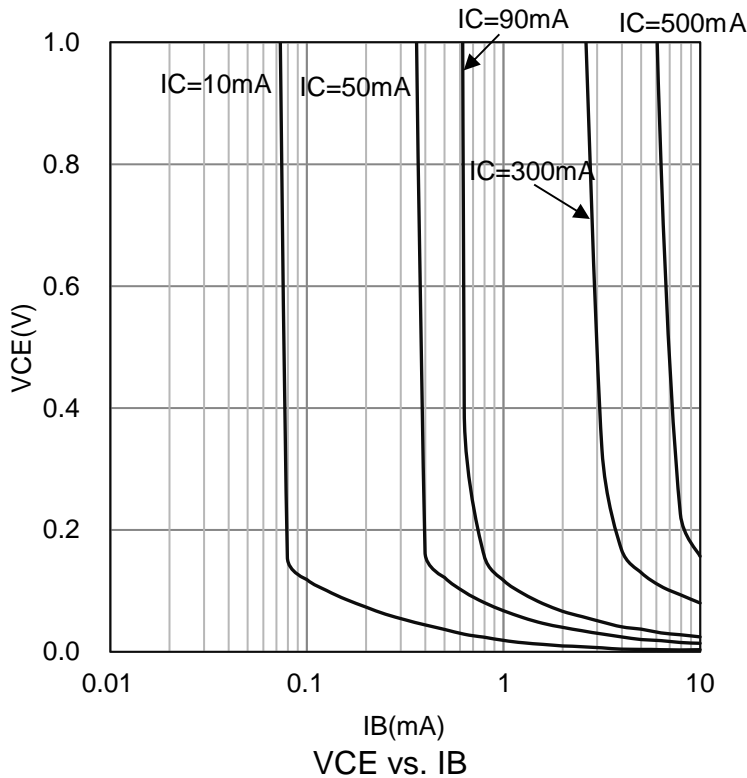
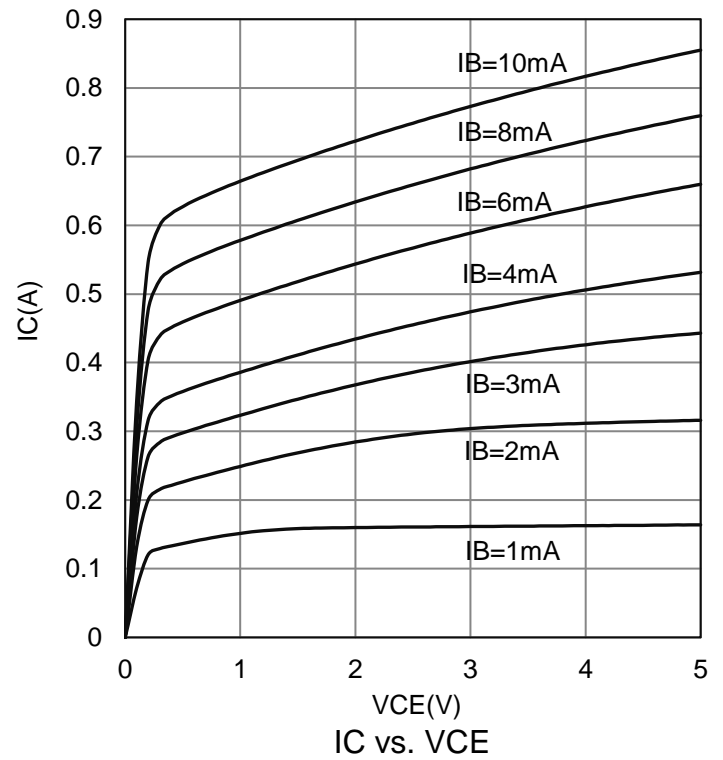
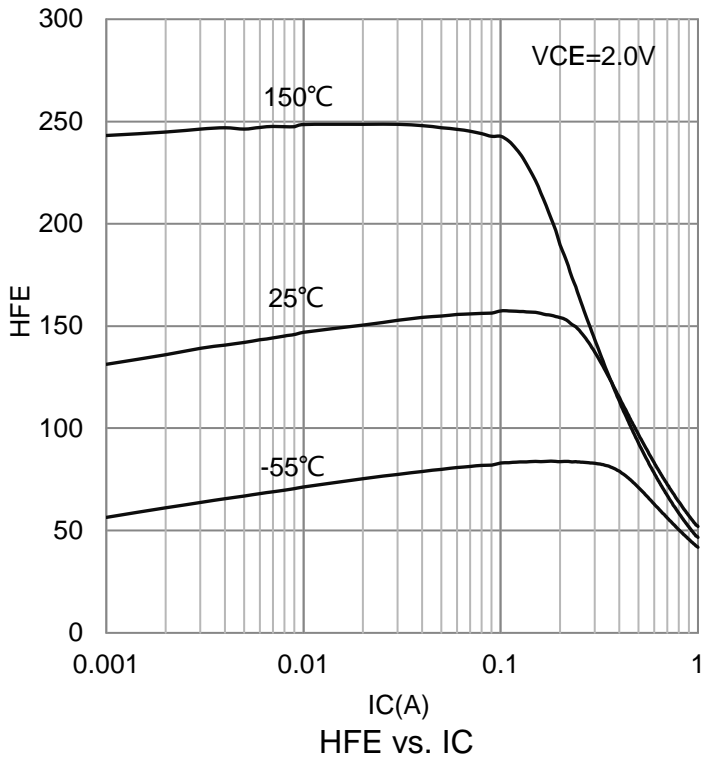


6. ELECTRICAL CHARACTERISTICS (Ta= 25°C)

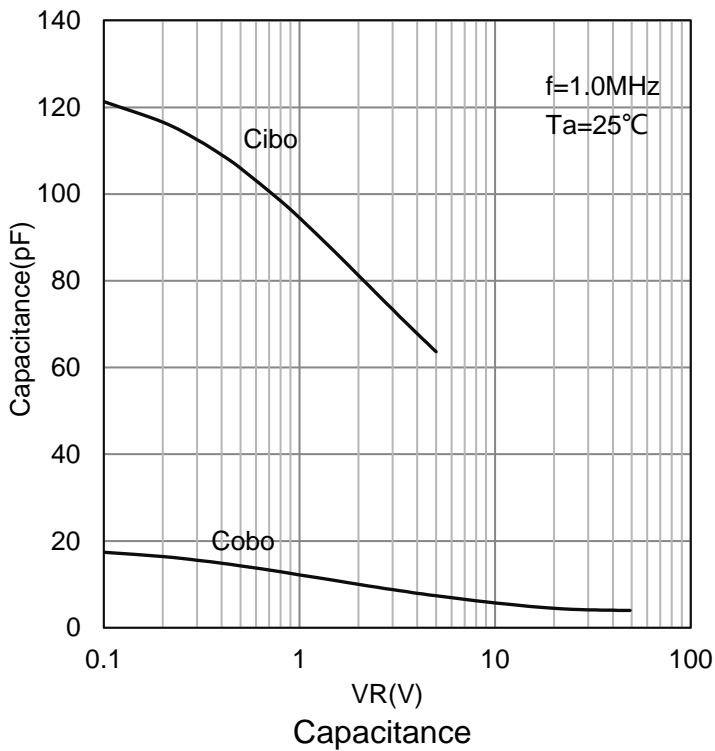
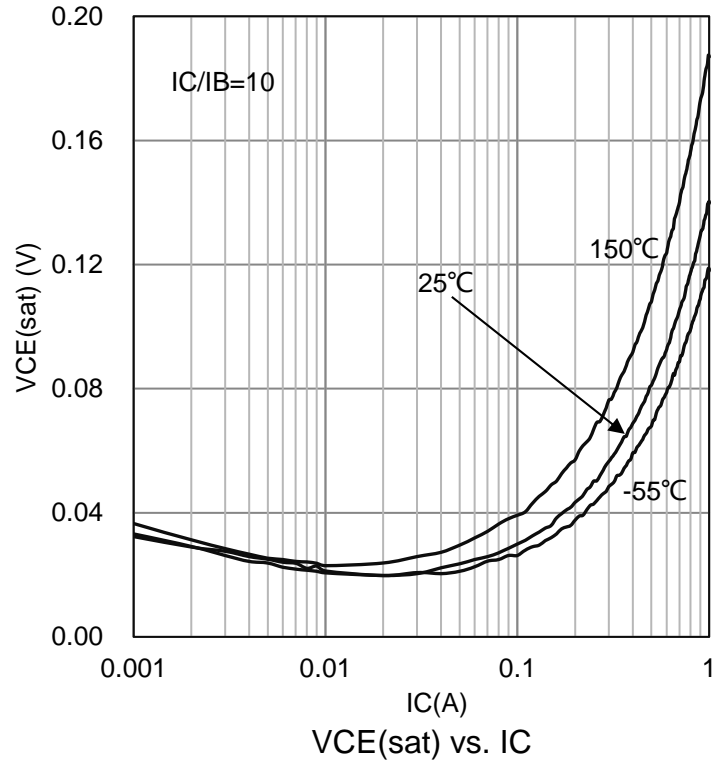
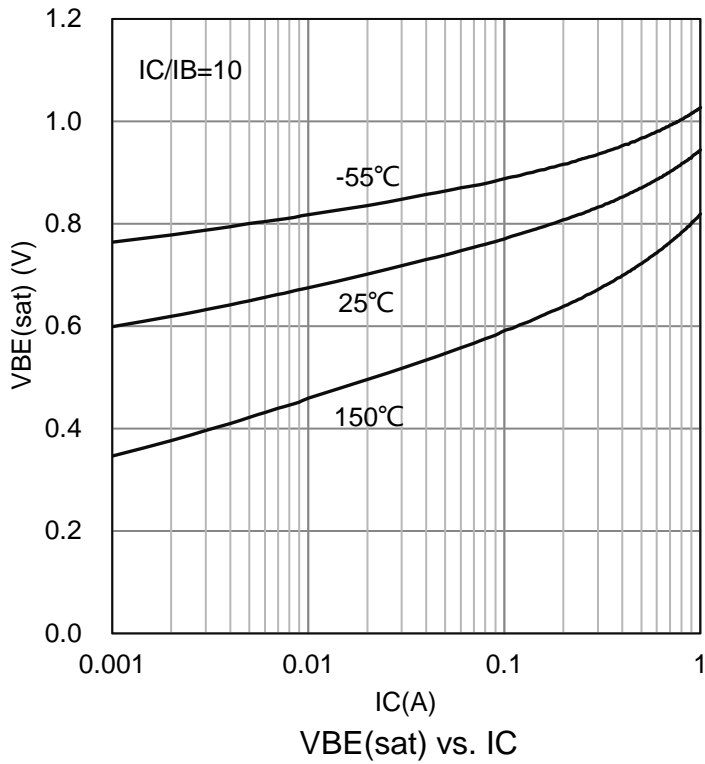
Characteristic	Symbol	Min.	Typ.	Max.	Unit
Collector–Emitter Breakdown Voltage (IC = 1.0 mA, IB = 0)	VBR(CEO)	100	-	-	V
Collector–Base Breakdown Voltage (IC = 100 μA, IE = 0)	VBR(CBO)	100	-	-	V
Emitter–Base Breakdown Voltage (IE = 100 μA, IC = 0)	VBR(EBO)	5	-	-	V
Collector-Base Cutoff Current (VCB = 30 V, IE = 0 A) (VCB = 30 V, IE = 0 A, Tj = 150°C)	ICBO	-	-	100 10	nA μA
Emitter-Base CutOff Current (VEB = 5 V, IC = 0 A)	IEBO	-	-	100	nA
Collector-Emitter cutoff Current (VCE= 80V, IB=0)	ICEO	-	-	10	μA
DC Current Gain (IC = 5mA, VCE =2V) (IC =150mA, VCE =2V) (IC =500mA, VCE = 2V)	HFE	63 100 40	- - -	- 250 -	
Collector–Emitter Saturation Voltage (IC = 500 mA, IB = 50 mA)	VCE(sat)	-	-	0.5	V
Base–Emitter Saturation Voltage (IC = 500 mA, IB = 50 mA)	VBE(sat)	-	-	1	V
Base–Emitter Voltage (VCE = 2 V, IC = 500 mA)	VBE	-	-	1	V
Transitional Frequency (VCE = 5 V, IC = 50 mA, f = 100 MHz)	fT	100	180	-	MHz
Collector Capacitance (VCB = 10 V, IE = ie = 0 A, f = 1 MHz)	Cc	-	6	-	pF

2.Pulse Test: Pulse Width ≤300 μs, Duty Cycle ≤2.0%.

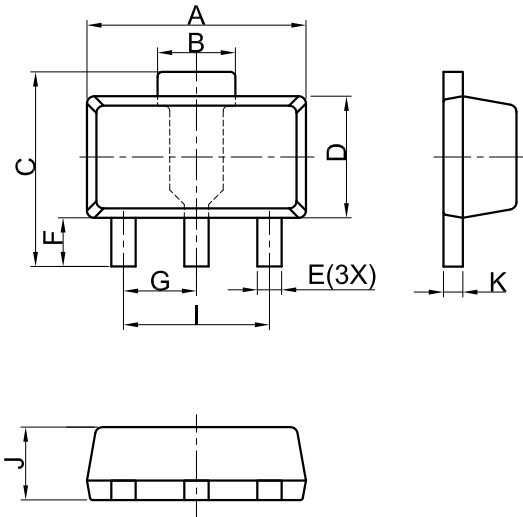
7.ELECTRICAL CHARACTERISTICS CURVES



7.ELECTRICAL CHARACTERISTICS CURVES(Con.)



8.OUTLINE AND DIMENSIONS

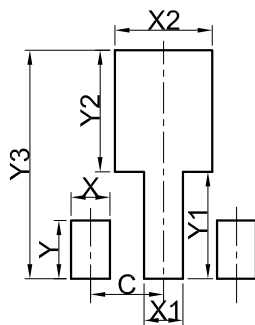


SOT89			
DIM	MIN	NOR	MAX
A	4.30	4.50	4.70
B	1.40	1.60	1.80
C	3.90	4.00	4.25
D	2.30	2.50	2.70
E	0.40	0.50	0.58
F	0.90	1.00	1.20
G	1.50 BSC		
I	3.00 BSC		
J	1.40	1.50	1.60
K	0.34	0.40	0.50
All Dimensions in mm			

GENERAL NOTES

1. Top package surface finish Ra0.4±0.2um
2. Bottom package surface finish Ra0.7±0.2um
3. Side package surface finish Ra0.4±0.2um
4. Protrusion or Gate Burrs shall not exceed 0.10mm per side.

9.SOLDERING FOOTPRINT



SOT89	
DIM	(mm)
X	0.80
Y	1.20
X1	0.80
Y1	2.20
X2	2.00
Y2	2.50
C	1.50
Y3	4.70

DISCLAIMER

- Before you use our Products, you are requested to carefully read this document and fully understand its contents. LRC shall not be in any way responsible or liable for failure, malfunction or accident arising from the use of any LRC's Products against warning, caution or note contained in this document.
- All information contained in this document is current as of the issuing date and subject to change without any prior notice. Before purchasing or using LRC's Products, please confirm the latest information with a LRC sales representative.

单击下面可查看定价，库存，交付和生命周期等信息

[>>LRC\(乐山无线电\)](#)