



# Ultra Low Power, Dual channel UWB Radar Sensor IC & X7F202 Module

## X7

Samples available for Beta customers now

# NOVELDA X7: Single Chip, 2D People Tracking thru Sensing

A self-  
explanatory  
demonstration:

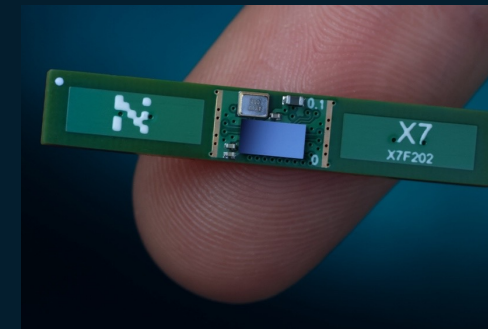
[<Video>](#)



## NOVELDA X7 - First Light

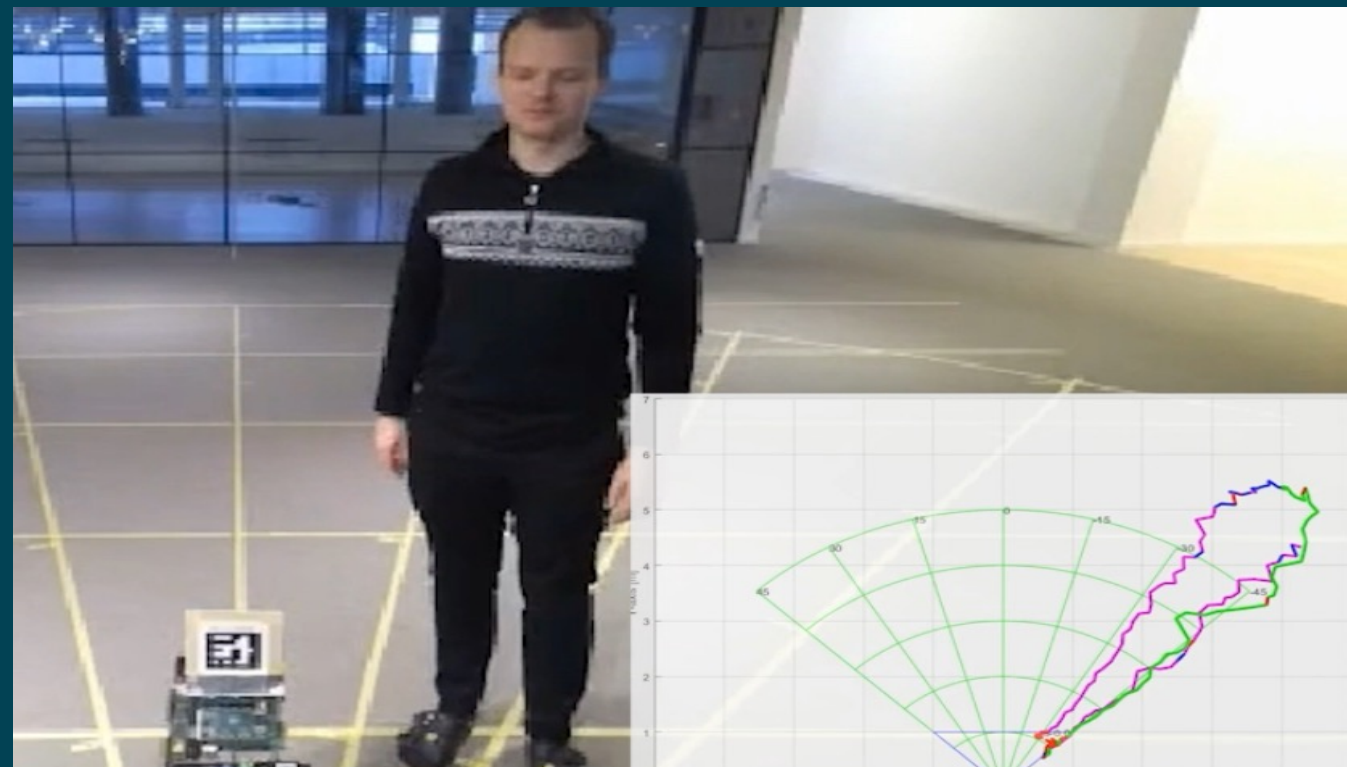
The most reliable human presence sensor in the world

# NOVELDA X7 enables advanced applications...



<50uW

## People tracking



Video conferencing

Smart speakers

AR / VR

Turn on / off

Immersive audio

Understand scene

## People counting & positioning



Lighting, heating and ventilation

Building intelligence

Reduce energy consumption

Optimize use of buildings

## Ultra-low power sensing



Alarm & security

Hygiene

Motion sensor

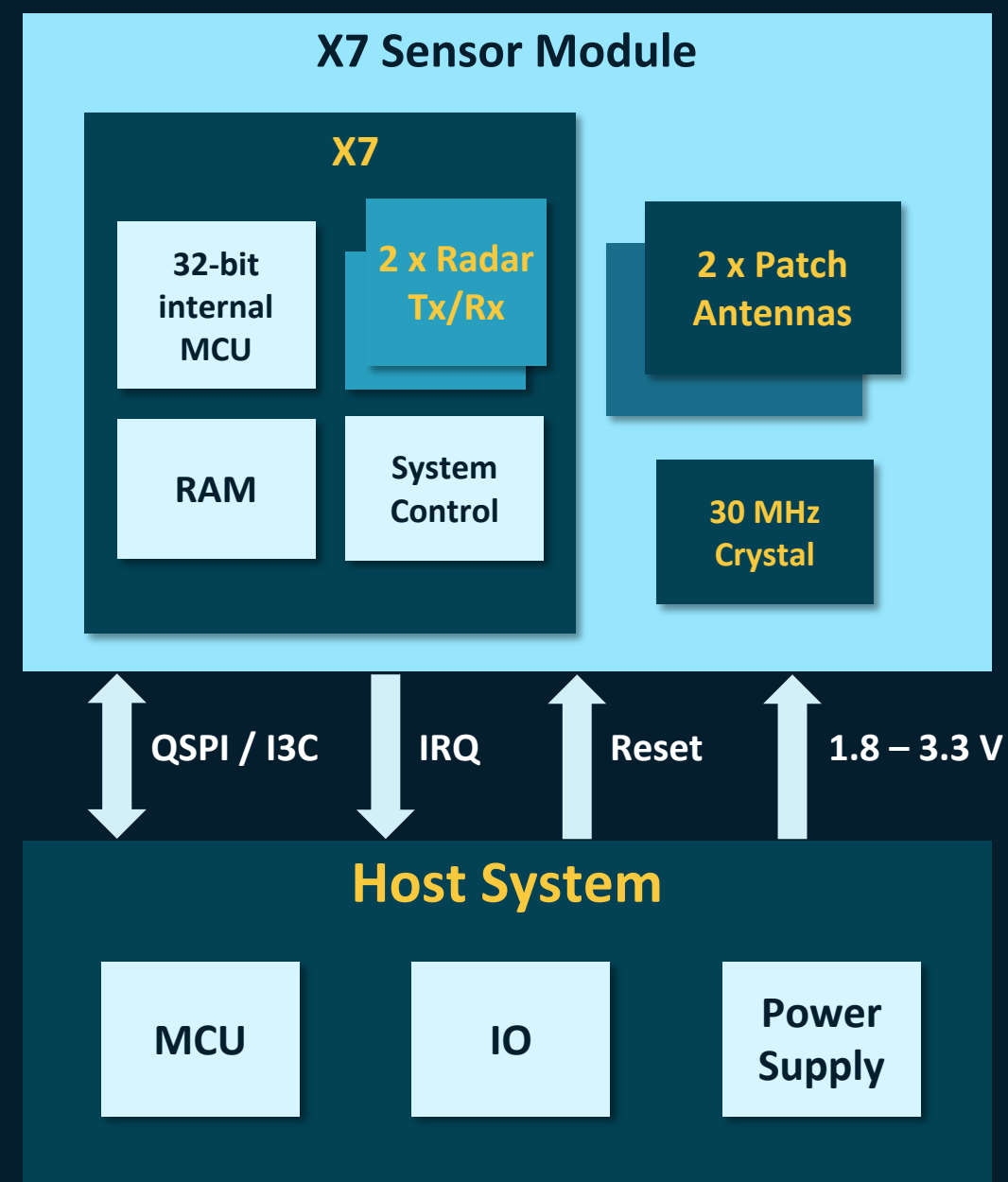
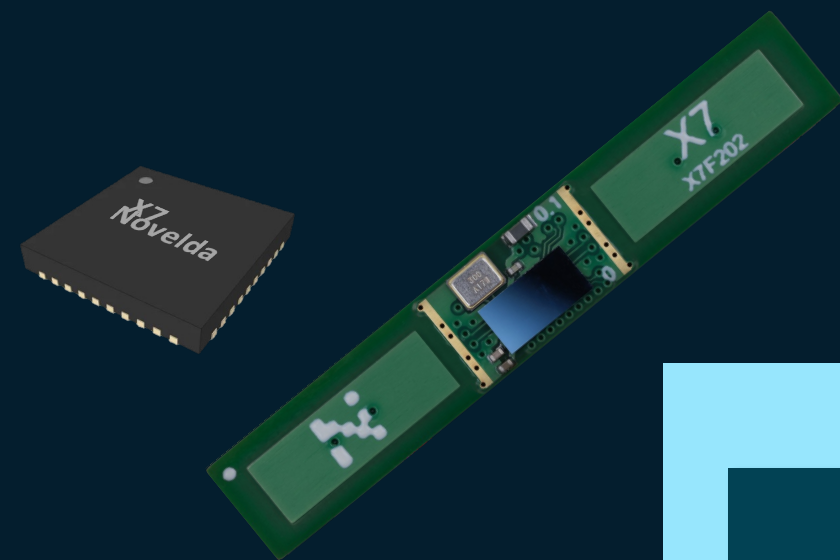
Low power proximity sensing

# X7 Solution of Choice for In-Cabin Sensing: CPD (Child Presence Detection) and More...

- **X7 UWB can support:**  
CPD, Seat occupancy detection, Kick sensing, Gestures recognition, DMS (driver monitoring syst.) ...
- **NOVELDA UWB outperforms traditional 60GHz radar:**
  - Worlds lowest power presence & intrusion detection (50 to 100uW)
  - UWB cm-wave is un-sensitive to obstacles and materials in the cabin
  - CPD: may allow single sensor operation even in 3-row vehicles
- **NOVELDA X7 brings:**
  - CPD algorithm
  - Target classification (adult / child)
  - Breathing detection, possibly heartbeat monitoring



# NOVELDA X7F202 Simplified Block Diagram & Specs



## X7F202 Module Specification

Supply Voltage	1.8V to 3.3V
Operating Temperature	-40° to +85°C
Size	5 x 30 mm
Radar ports	2 TX, 2 RX
Radar frequency	7.875 GHz
Built-in antennas	Yes, dual RX/TX antennas
Field of view	Up to 180°
Built-in balun and filter	Yes (on X7 chip)
Host interface	[Q]SPI/I3C/IRQ/GPIO

## Power Consumption

Low power presence	< 50 $\mu$ W
Idle (with retention)	11 $\mu$ W
Power down	5 $\mu$ W

## Detection Output

Presence in selected zone	Yes
Position of the detected target	Yes: Distance and azimuth angle
Radar frames	Yes (with Radar Direct firmware)
Respiration rate	Yes (with CPD firmware)

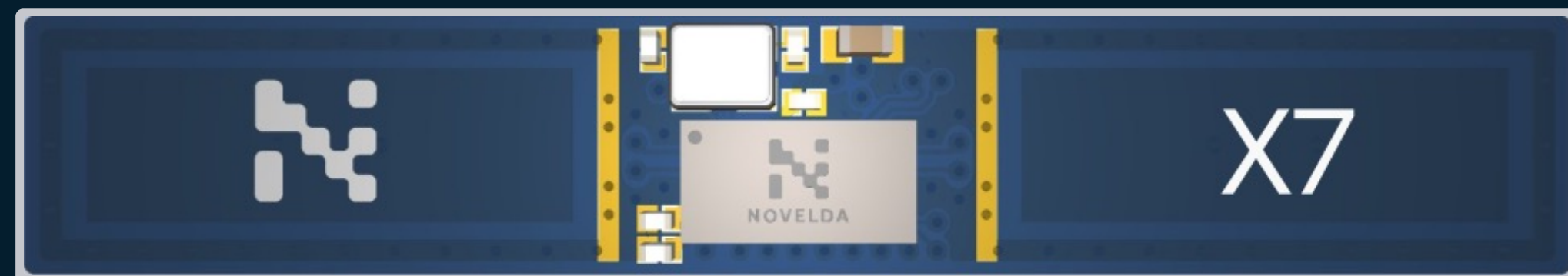
## Sensor Integration

- Flexible mounting in ceiling, on wall, in dashboard
- Sees through any non-conductive object or material
- Best-in-class operation in heavy multipath RF environment
- Pulse coding allowing robust multi-sensor coexistence

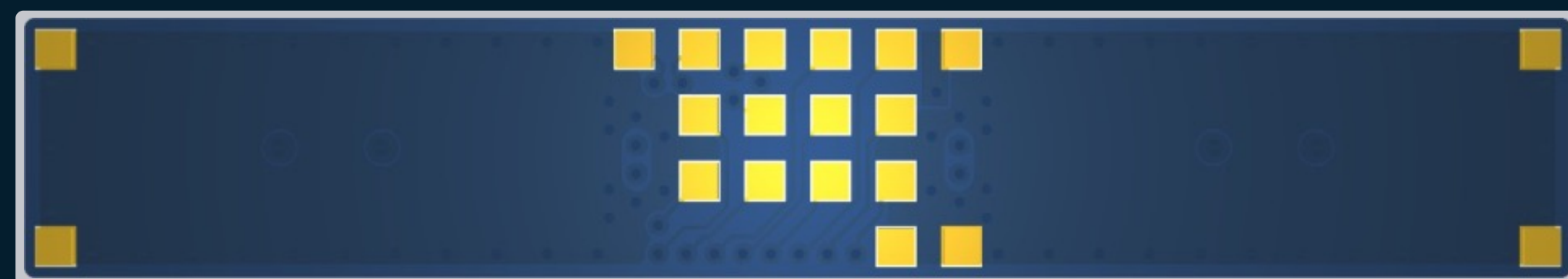
# X7F202: high-performance, low-cost module

## Why Novelda modules?

- Pre-certified world-wide
- Easy integration
- Faster Time-to-Market



Top side with PCB antennas and components



Bottom side with LGA solder pads

HW	Item
L x W x H	5 x 30 x 3.13 mm
Mounting	LGA (Land Grid Array)
PCB	4-layer low-cost FR4
Components	X7, crystal, passives, metal shield
Status	Early sampling now

Features	Item
Interface	QSPI, SPI-XIP, I2C, GPIO
Supply voltage	1.8 – 3.3V
Co-existence	WIFI filter built-in (X7)
Ext requirements	MCU / flash
SW features	Radar Direct, Ultra-Low Power Presence
UWB certification	World-wide

单击下面可查看定价，库存，交付和生命周期等信息

[>>Novelda](#)