

Circular Connectors Conforming to JIS C 5432

JR Series



■ Features

1. These round connectors conform to JIS C 5432 "Circular connectors for electric appliances."

■ Product Specifications

| Ratings | Rated current | Shell size | Number of contacts | Rated current |
|---------|---------------|------------|---|---------------|
| | | 13 | 3 | 10A |
| | | 5 | 5A | |
| | 16 | 7 | 10A | |
| | | 10, 14 | 5A | |
| | | 10 | 10A | |
| | 21 | 16 | 5A (Crimp type : 3A) | |
| | | 26 | 5A (Contact numbers A and B only : 10A) | |
| | | 4 | 30A | |
| | 25 | 5, 16 | 10A | |
| | | 24 | 5A (Crimp type : 3A) | |

| Ratings | Rated voltage | Shell size | Number of contacts | Rated voltage |
|---------|---------------|------------|--------------------|-----------------------------------|
| | | 13 | 3, 5 | AC250, DC350V |
| 16 | 7, 10, 14 | | | |
| 21 | 10, 16, 26 | | | |
| | 25 | 4, 5 | 16, 24 | AC1000V, DC1400V AC250, DC350V |

| Ratings | Operating temperature range | -25 to +85°C |
|---------|-----------------------------|--------------|
| | Storage temperature range | -10 to +60°C |

| Items | Specifications | Conditions |
|--------------------------|--|--|
| 1. Contac resistance | 5mΩ max. JR 21-16 contact crimping type : 10mΩ max. JR 25-24 contact crimping type : 10mΩ max. | Measured at DC 1A |
| 2. Insulation resistance | 1,000MΩ min. JR 25-4 and 5 contacts : 10,000MΩ min. | Measured at DC 500V |
| 3. Withstanding voltage | No flashover or dielectric breakdown. | AC 1,000V for 1 minute JR 25-4, 5 contacts : AC 3,000V for 1 minute |
| 4. Vibration resistance | No electrical discontinuity for 10μs or greater | 10 to 55Hz/cycle, amplitude : 0.75mm, 3 directions, 2 hours each |
| 5. Shock resistance | No electrical discontinuity for 10μs or greater | Acceleration : 490m/s ² , duration : 11ms, 6 axis directions, 3 cycles each |
| 6. Mating cycles | Contact resistance : 10mΩ max. | 500 times |
| 7. Temperature cycle | Insulation resistance : 1,000MΩ min. JR 25-4 and 5 contacts : Insulation resistance : 10,000MΩ min. | -40°C : 30 minutes → Normal temperature : 10 to 15 minutes → 100°C : 30 minutes → Normal temperature : 10 to 15 minutes, left for 5 cycles |
| 8. Moisture resistance | Insulation resistance (when dry) 100MΩ min. 5,000MΩ min. : JR 25-4 , 5 contacts | Temperature : 40°C, relative humidity: 90 to 95%, left for 96 hours |

■ Materials / Finish

| Part | Material | Finish | Remarks |
|-----------|---------------------------|----------------|---------|
| Shell | Aluminum alloy | Nickel plating | ———— |
| Insulator | Phenol resin PPS resin | ———— | UL94V-0 |
| Contact | Copper alloy | Silver plating | ———— |

Product Number Structure

Refer to the chart below when determining the product specifications from the product number.
Please select from the product numbers listed in this catalog when placing orders.

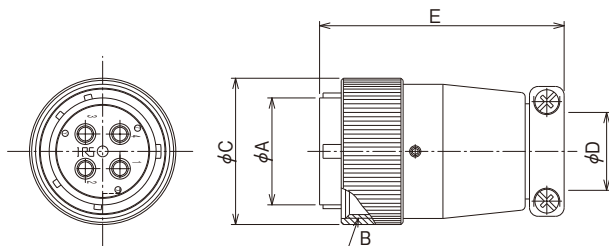
JR 16 P A - 10 S C ()**

① ② ③ ④ ⑤ ⑥ ⑦ ⑧

| | |
|---|--|
| ① Model name : JR Series | ⑤ Number of contacts |
| ② Shell size : The shell size is the outer shell diameter of the mating end of the plug. | ⑥ Contact form P : Male contact S : Female contact |
| ③ Shell type P : Threaded lock plug J : Threaded lock jack R : Threaded lock receptacle BP : Bayonet-lock plug RC : Threaded lock receptacle cap BR : Bayonet-lock receptacle | ⑦ Contact termination method: None : Solder termination C : Crimp termination |
| ④ Shell variation : Letters such as A, B, C, etc. indicate variations in the shell. | ⑧ Other specifications : A two-digit number is added to indicate other specifications. |

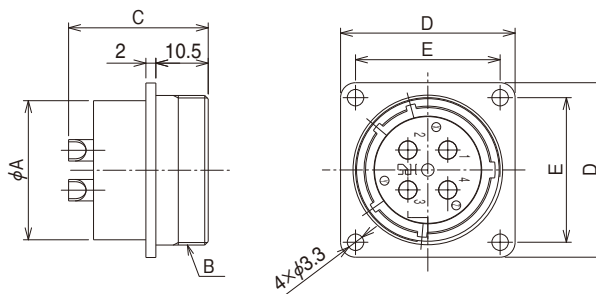
Solder Type

● Threaded lock plug



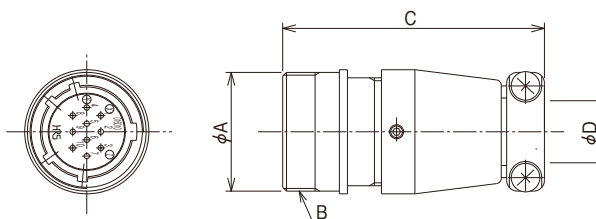
| Part No. | HRS No. | No. of contacts | φA | B | φC | φD | E | JIS No. |
|----------------|---------------|-----------------|------|-------|------|------|------|----------------|
| JR13PK-3P(71) | 114-0501-7 71 | 3 | 12.7 | M18×1 | 21.8 | 8.5 | 45.5 | CNR01SPM013003 |
| JR13PK-5P(71) | 114-0502-0 71 | 5 | | | | | | CNR01SPM013005 |
| JR16PK-7P(71) | 114-0503-2 71 | 7 | 16.3 | M22×1 | 25.8 | 11.5 | 49.5 | CNR01SPM016007 |
| JR16PK-10P(71) | 114-0504-5 71 | 10 | | | | | | CNR01SPM016010 |
| JR21PK-10P(71) | 114-0505-8 71 | 10 | 20.5 | M26×1 | 29.8 | 15 | 53.5 | CNR01SPM021010 |
| JR21PK-16P(71) | 114-0506-0 71 | | | | | | | CNR01SPM021016 |
| JR25PK-16P(71) | 114-0507-3 71 | 16 | 24.7 | M30×1 | 33.8 | 18 | 56.5 | CNR01SPM025016 |
| JR25PK-24P(71) | 114-0508-6 71 | | | | | | | CNR01SPM025024 |
| JR25PH-4P | 114-0626-2 | 4 | 24.7 | M30×1 | 33.8 | 18 | 56.5 | ————— |
| JR25PH-5P | 114-0624-7 | 5 | | | | | | ————— |
| JR13PK-3S(71) | 114-0509-9 71 | 3 | 12.7 | M18×1 | 21.8 | 8.5 | 45.5 | CNR01SPF013003 |
| JR13PK-5S(71) | 114-0510-8 71 | 5 | | | | | | CNR01SPF013005 |
| JR16PK-7S(71) | 114-0511-0 71 | 7 | 16.3 | M22×1 | 25.8 | 11.5 | 49.5 | CNR01SPF016007 |
| JR16PK-10S(71) | 114-0512-3 71 | 10 | | | | | | CNR01SPF016010 |
| JR21PK-10S(71) | 114-0513-6 71 | 10 | 20.5 | M26×1 | 29.8 | 15 | 53.5 | CNR01SPF021010 |
| JR21PK-16S(71) | 114-0514-9 71 | | | | | | | CNR01SPF021016 |
| JR25PK-16S(71) | 114-0515-1 71 | 16 | 24.7 | M30×1 | 33.8 | 18 | 56.5 | CNR01SPF025016 |
| JR25PK-24S(71) | 114-0516-4 71 | | | | | | | CNR01SPF025024 |
| JR25PH-4S | 114-0627-5 | 4 | 24.7 | M30×1 | 33.8 | 18 | 56.5 | ————— |
| | | | | | | | | ————— |

● Threaded lock receptacle



| Part No. | HRS No. | No. of contacts | ϕA | B | C | D | E | JIS No. |
|------------|------------|-----------------|----------|-------|------|----|----|----------------|
| JR13RK-3P | 114-0517-7 | 3 | 15.9 | M18x1 | 26.6 | 26 | 20 | CNR01SRM013003 |
| JR13RK-5P | 114-0518-0 | 5 | | | 26.1 | | | CNR01SRM013005 |
| JR16RK-7P | 114-0519-2 | 7 | 19.9 | M22x1 | 26.6 | 29 | 23 | CNR01SRM016007 |
| JR16RK-10P | 114-0520-1 | 10 | | | 26.1 | | | CNR01SRM016010 |
| JR21RK-10P | 114-0521-4 | 16 | 23.9 | M26x1 | 26.6 | 32 | 26 | CNR01SRM021010 |
| JR21RK-16P | 114-0522-7 | | | | 26.1 | | | CNR01SRM021016 |
| JR25RK-16P | 114-0523-0 | 24 | 27.9 | M30x1 | 26.6 | 35 | 29 | CNR01SRM025016 |
| JR25RK-24P | 114-0524-2 | | | | 26.1 | | | CNR01SRM025024 |
| JR25RH-4P | 114-0628-8 | 4 | 15.9 | M18x1 | 28 | 26 | 20 | ————— |
| JR13RK-3S | 114-0525-5 | 3 | | | 27 | | | CNR01SRF013003 |
| JR13RK-5S | 114-0526-8 | 5 | 19.9 | M22x1 | 28 | 29 | 23 | CNR01SRF016007 |
| JR16RK-7S | 114-0527-0 | 7 | | | 27 | | | CNR01SRF016010 |
| JR16RK-10S | 114-0528-3 | 10 | 23.9 | M26x1 | 28 | 32 | 26 | CNR01SRF021010 |
| JR21RK-10S | 114-0529-6 | 16 | | | 27 | | | CNR01SRF021016 |
| JR21RK-16S | 114-0530-5 | 16 | 27.9 | M30x1 | 28 | 35 | 29 | CNR01SRF025016 |
| JR25RK-16S | 114-0531-8 | | | | 27 | | | CNR01SRF025024 |
| JR25RK-24S | 114-0532-0 | 24 | 27.9 | M30x1 | 27 | 35 | 29 | ————— |
| JR25RH-4S | 114-0629-0 | 4 | | | 28 | | | ————— |
| JR25RH-5S | 114-0625-0 | 5 | | | 27.8 | | | ————— |

● Threaded lock jack

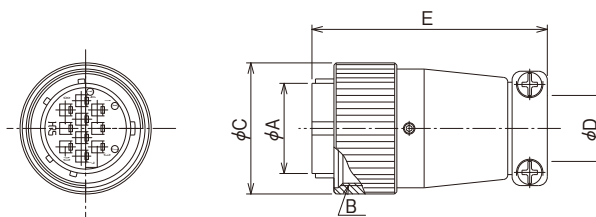


| Part No. | HRS No. | No. of contacts | ϕA | B | C | ϕD |
|------------|------------|-----------------|----------|-------|------|----------|
| JR13JK-3P | 114-0533-3 | 3 | 19 | M18x1 | 44.5 | 8.5 |
| JR13JK-5P | 114-0534-6 | 5 | | | | |
| JR16JK-7P | 114-0535-9 | 7 | 23 | M22x1 | 48.5 | 11.5 |
| JR16JK-10P | 114-0536-1 | 10 | | | | |
| JR21JK-10P | 114-0537-4 | 16 | 27 | M26x1 | 52.5 | 15 |
| JR21JK-16P | 114-0538-7 | | | | | |
| JR25JK-16P | 114-0539-0 | 16 | 31 | M30x1 | 55.5 | 18 |
| JR25JK-24P | 114-0540-9 | 24 | | | | |
| JR13JK-3S | 114-0541-1 | 3 | 19 | M18x1 | 44.5 | 8.5 |
| JR13JK-5S | 114-0542-4 | 5 | | | | |
| JR16JK-7S | 114-0543-7 | 7 | 23 | M22x1 | 48.5 | 11.5 |
| JR16JK-10S | 114-0544-0 | 10 | | | | |
| JR21JK-10S | 114-0545-2 | 16 | 27 | M26x1 | 52.5 | 15 |
| JR21JK-16S | 114-0546-5 | | | | | |
| JR25JK-24S | 114-0548-0 | 24 | 31 | M30x1 | 55.5 | 18 |

Jan. 1. 2025 Copyright 2025 HIROSE ELECTRIC CO., LTD. All Rights Reserved.

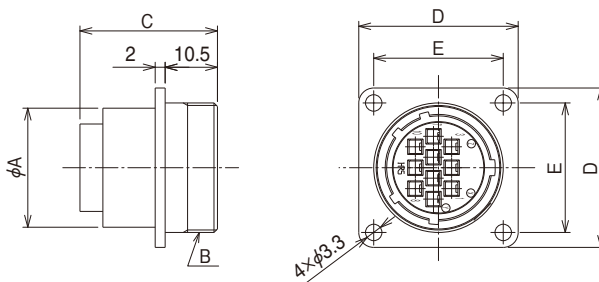
■ Crimp Type

● Threaded lock plug



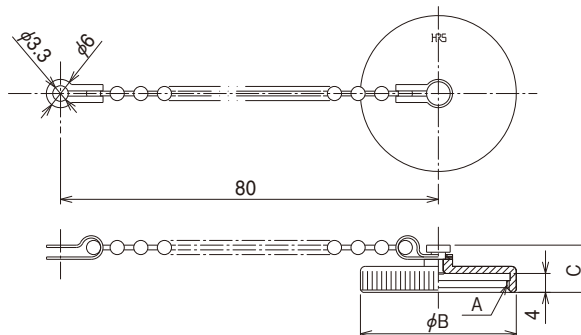
| Part No. | HRS No. | No. of contacts | φA | B | φC | φD | E | Remarks |
|-----------------|---------------|-----------------|------|-------|------|----|------|--------------|
| JR21PK-10PC(71) | 114-0570-0 71 | 10 | 20.5 | M26×1 | 29.8 | 15 | 53.5 | Contact φ1.6 |
| JR21PK-10SC(71) | 114-0571-2 71 | | | | | | | |
| JR21PK-16PC(71) | 114-0572-5 71 | 16 | 20.5 | M26×1 | 29.8 | 15 | 53.5 | Contact φ1 |
| JR21PK-16SC(71) | 114-0573-8 71 | | | | | | | |
| JR25PK-24PC(71) | 114-0574-0 71 | 24 | 24.7 | M30×1 | 33.8 | 18 | 56.5 | |
| JR25PK-24SC(71) | 114-0575-3 71 | | | | | | | |

● Threaded lock receptacle



| Part No. | HRS No. | No. of contacts | φA | B | C | D | E | Remarks |
|-------------|------------|-----------------|------|-------|------|----|----|--------------|
| JR21RK-10SC | 114-0577-9 | 10 | 23.9 | M26×1 | 27.6 | 32 | 26 | Contact φ1.6 |
| JR21RK-16PC | 114-0578-1 | 16 | | | 25.4 | | | |
| JR21RK-16SC | 114-0579-4 | | | | 24 | 23 | 35 | 29 |
| JR25RK-24SC | 114-0581-6 | | | | | | | |

● Threaded lock receptacle cap

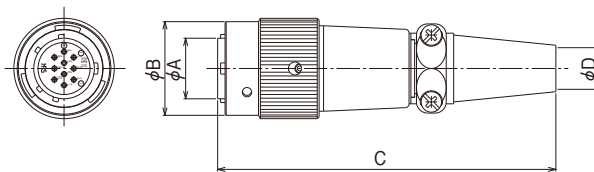


| Part No. | HRS No. | A | φB | C | JIS No. |
|-------------|---------------|-------|----|----|------------|
| JRC13RC(71) | 114-0053-8 71 | M18×1 | 21 | 10 | CNR01RC013 |
| JRC16RC(71) | 114-0054-0 71 | M22×1 | 25 | | CNR01RC016 |
| JRC21RC(71) | 114-0055-3 71 | M26×1 | 29 | | CNR01RC021 |
| JRC25RC(71) | 114-0056-6 71 | M30×1 | 33 | | CNR01RC025 |

Jan. 1. 2025 Copyright 2025 HIROSE ELECTRIC CO., LTD. All Rights Reserved.

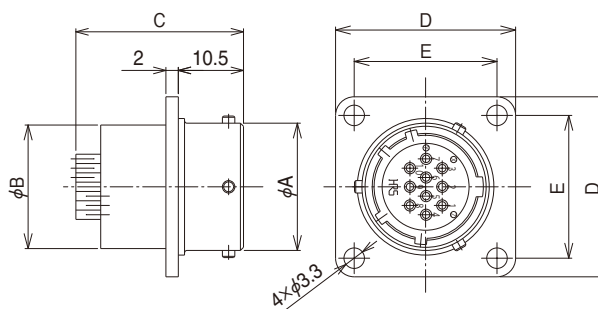
■ Solder Type

● Bayonet - lock plug



| Part No. | HRS No. | No. of contacts | φA | φB | C | φD | Remarks |
|------------------|---------------|-----------------|------|----|----|------|---------|
| JRC16BP-14P(71) | 114-0251-1 71 | 14 | 16.3 | 27 | 91 | 11.2 | |
| JRC21BPA-26P(31) | 114-0268-4 31 | 26 | 20.5 | 31 | 98 | 12.2 | |
| JRC16BP-14S(71) | 114-0254-0 71 | 14 | 16.3 | 27 | 91 | 11.2 | |
| JRC21BP-26S(31) | 114-0267-1 31 | 26 | 20.5 | 31 | 98 | 12.2 | |

● Bayonet - lock receptacle

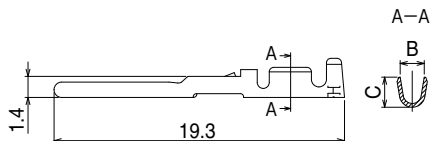


| Part No. | HRS No. | No. of contacts | φA | φB | C | D | E | Remarks |
|-----------------|---------------|-----------------|------|------|------|----|----|---------|
| JRC16BR-14P(71) | 114-0257-8 71 | 14 | 20.5 | 19.9 | 26.6 | 29 | 23 | |
| JRC21BR-26P(71) | 114-0269-7 71 | 26 | 25.8 | 23.9 | 26.8 | 32 | 26 | |
| JRC16BR-14S(71) | 114-0260-2 71 | 14 | 20.5 | 19.9 | 25.8 | 29 | 23 | |
| JRC21BRA-26S | 114-0270-6 | 26 | 25.8 | 23.9 | 28 | 32 | 26 | |

◆ Crimp Contacts

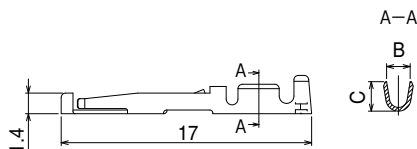
Contact diameter $\phi 1.0\text{mm}$

Male contact



| Type | Part No. | HRS No. | B | C | Applicable wire |
|---------------|-------------|------------|------|-----|-----------------|
| Loose contact | JRC-PC2-112 | 114-0243-3 | 1.6 | 2.0 | 20 to 24 AWG |
| | JRC-PC2-122 | 114-0244-6 | 1.45 | 1.5 | 24 to 28 AWG |
| Reel contact | JRC-PC2-212 | 114-0245-9 | 1.6 | 2.0 | 20 to 24 AWG |
| | JRC-PC2-222 | 114-0246-1 | 1.45 | 1.5 | 24 to 28 AWG |

Female contact

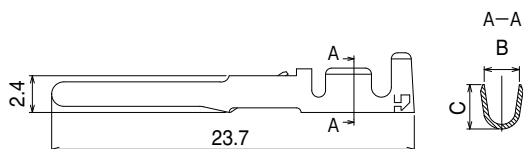


| Type | Part No. | HRS No. | B | C | Applicable wire |
|---------------|-------------|------------|------|-----|-----------------|
| Loose contact | JRC-SC2-112 | 114-0247-4 | 1.6 | 2.0 | 20 to 24 AWG |
| | JRC-SC2-122 | 114-0248-7 | 1.45 | 1.5 | 24 to 28 AWG |
| Reel contact | JRC-SC2-212 | 114-0249-0 | 1.6 | 2.0 | 20 to 24 AWG |
| | JRC-SC2-222 | 114-0250-9 | 1.45 | 1.5 | 24 to 28 AWG |

Note : Loose contact in pack of 100 pcs. Reel contact contains 8,000 pcs.

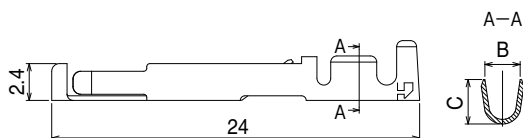
Contact diameter $\phi 1.6\text{mm}$

Male contact



| Type | Part No. | HRS No. | B | C | Applicable wire |
|---------------|------------|------------|-----|-----|-----------------|
| Loose contact | JRC-PC-112 | 114-0239-6 | 2.3 | 2.9 | 16 to 20 AWG |
| Reel contact | JRC-PC-212 | 114-0240-5 | | | |

Female contact



| Type | Part No. | HRS No. | B | C | Applicable wire |
|---------------|------------|------------|-----|-----|-----------------|
| Loose contact | JRC-SC-112 | 114-0241-8 | 2.3 | 2.9 | 16 to 20 AWG |
| Reel contact | JRC-SC-212 | 114-0242-0 | | | |

Note : Loose contact in pack of 100 pcs. Reel contact contains 5,000 pcs.

◆ Applicable Tools

| Contact dia. | Type | Item | Part No. | HRS No. | Applicable terminal | Applicable wire |
|--------------|-----------------|--------------------------|-------------|--------------|----------------------------|----------------------------|
| φ1 | Manual | Manual crimping tool | HT802/RM-11 | 150-0401-6 | JRC-PC2-112 JRC-SC2-112 | 20 to 24 AWG |
| | | | HT802/RM-12 | 150-0402-9 | JRC-PC2-122 JRC-SC2-122 | 24 to 28 AWG |
| | Automatic | Automatic crimping press | CM-105C | 901-0001-0 | ————— | ————— |
| | | | Applicator | AP105-JRC2-1 | 901-2037-1 | JRC-PC2-212 JRC-SC2-212 |
| | | AP105-JRC2-2 | | 901-2038-4 | JRC-PC2-222 JRC-SC2-222 | 24 to 28 AWG |
| | Extraction tool | | RM-TP | 150-0008-7 | ————— | ————— |
| φ1.6 | Manual | Manual crimping tool | JRC-TC-11 | 150-0033-4 | JRC-PC-112 JRC-SC-112 | 16 AWG |
| | | | JRC-TC-12 | 150-0034-7 | JRC-PC-112 JRC-SC-112 | 18 to 20 AWG |
| | Automatic | Automatic crimping press | CM-105C | 901-0001-0 | ————— | ————— |
| | | | Applicator | AP105-JRC-1 | 901-2039-7 | JRC-PC-212 JRC-SC-212 |
| | Extraction tool | | | JRC-TP | 150-0035-0 | ————— |

Hand Tool Crimp



(For Contact Diameter φ1.0mm)



(For Contact Diameter φ1.6mm)

Extraction Tool



(For Contact Diameter φ1.0mm)



(For Contact Diameter φ1.6mm)



Automatic Crimping Machine CM-105C

◆ Precautions

1. This product series uses silver plated contacts. Silver reacts easily to exposure to sulfur gas so the below conditions may cause tarnishing.

- Dusty environments
- Area with a high concentration area of gases such as sulfur dioxide gas, hydrogen sulfide gas, nitrogen dioxide gas and so on.
Example; In close proximity to factory exhaust, automotive emissions, etc.
- Close to heaters, or in other areas marked by extreme temperature differences or high humidity.
- Close to rubber products includes rubber adhesives.

The Electrical connection is not affected by tarnishing on a silver surface due to the wiping effect of the contact pins.

2. Storage

Packing state; Packed in original packing or equivalent container

Temperature -10 to +60°C

Humidity 85% Max

(It is recommended that the product be stored in an area of normal level of temperature and humidity, and free of any temperature fluctuation)

Please use this products within 6 months of delivery.

(After 6 month, please check the solderability before use)

“Storage” means long-term storage of the unused products in sealed packaging, prior to assembly to PCB.

3. Ask a Hirose sales personnel to provide Cable Assembly Procedure (ETAD-C0473-00)

◆ Contact Position Arrangement

| | | | | | |
|--------------------------|------------------|------------|----------------------------|----------------------------|------------------------|
| Shell size | | | | | |
| No. of contacts | 3 | | 5 | | |
| Withstanding voltage | AC1000V a minute | | | | |
| Current rating | 10A | | 5A | | |
| Insulation resistance | 1000MΩ MIN. | | | | |
| Contact resistance | 5mΩ MAX. | | | | |
| Solderpot inner diameter | 1.7mm dia. | | 1.1mm dia. | | |
| Shell size | | | | | |
| No. of contacts | 7 | | 10 | | 14 |
| Withstanding voltage | AC1000V a minute | | | | |
| Current rating | 10A | | 5A | | |
| Insulation resistance | 1000MΩ MIN. | | | | |
| Contact resistance | 5mΩ MAX. | | | | |
| Solderpot inner diameter | 1.7mm dia. | | | 1.1mm dia. | |
| Shell size | | | | | |
| No. of contacts | 10 | | 16 | | 26 |
| Withstanding voltage | AC1000V a minute | | | | |
| Current rating | 10A | | 5A (crimp type 3A) | 5A | 10A (only A, B) |
| Insulation resistance | 1000MΩ MIN. | | | | |
| Contact resistance | 5mΩ MAX. | | 5mΩ MAX. (crimp type 10mΩ) | 5mΩ MAX. | |
| Solderpot inner diameter | 1.7mm dia. | | 1.1mm dia. | | 1.7mm dia. (only A, B) |
| Shell size | | | | | |
| No. of contacts | 4 | 5 | 16 | | 24 |
| Withstanding voltage | AC3000V a minute | | AC1000V a minute | | |
| Current rating | 30A | 10A | | 5A (crimp type 3A) | |
| Insulation resistance | 10,000MΩ MIN. | | 1000MΩ MIN. | | |
| Contact resistance | 5mΩ MAX. | | | 5mΩ MAX. (crimp type 10mΩ) | |
| Solderpot inner diameter | 3.4mm dia. | 1.7mm dia. | | 1.1mm dia. | |

Remarks : 1. Viewed from mating face.
2. The withstand voltage is the test value.

HIROSE ELECTRIC CO.,LTD.

2-6-3, Nakagawa Chuoh, Tsuzuki-Ku, Yokohama-Shi 224-8540, JAPAN
<https://www.hirose.com/>

单击下面可查看定价，库存，交付和生命周期等信息

[>>HIROSE ELECTRIC\(广濑电机\)](#)